

Bluestone Church Arts Space Residency Program 2024: Creative Development and Supported Season

About the Bluestone Church Arts Space

The Bluestone Church Arts Space is a dedicated arts and performance venue located at 8A Hyde Street Footscray, and is managed by Arts & Culture Maribyrnong. Originally a Wesleyan Church built in the late 1800s, the church has long served as a social gathering place and continues this legacy now as an active arts venue.

It is a highly versatile performance space for emerging, mid-career and professional artists. Offering very high ceilings and a large open timber floor space totalling 246 square metres, the Bluestone Church Arts Space has been described by past users as versatile, unique and creatively inspiring. It is centrally located within close distance to Footscray Station.

About the Program

The Bluestone Church Arts Space is offering two types of artist residency programs in 2024:

- **Creative Development Program**, for artists seeking a space to develop their arts practise, and creatively develop a new work over a 2-week duration.
- **Supported Season Program**, for artists seeking a space to present a new performance season of 1-3 weeks' duration.

These programs aim to support artists at different stages in their project's lifecycle, whether it is a developing concept, an emerging draft, or a rehearsed production ready for its premiere season.

The program is open to performers, dancers, musicians and multi-disciplinary artists who live or work in Melbourne's West. Applicants that do not live or work in Melbourne's West, but can demonstrate a deep connection to the City of Maribyrnong, are also eligible to apply.

Creative Development Program:

Residencies are available for up to **2 weeks**, with an expectation of high usage during the time allocated. Please indicate your preferred time of year in the application form, with dates dictated by availability of the venue.

Applications that do not clearly outline a clear creative development aspect, and/or appear to be seeking a free rehearsal space will not be considered.

Applicants are encouraged to include at least one opportunity for the community to view the work-in-development during the residency period, or share their practice in some way.

Arts & Culture Maribyrnong will:

- Provide a stipend of **\$1,000** toward artist fees and/or production costs.
- Provide in-kind access to the Bluestone Church Arts Space to successful applicants.
- Cover the cost of hire fees for technical equipment in the facility for the duration of the residency.

Supported Season Program:

Residencies are available for **1-3 weeks duration**, with resident artists expected to bump in, technically rehearse, present a production to an audience that includes the general public, and bump out, all within this period of time.

Please indicate your preferred time of year in the application form, with dates dictated by availability of the venue.

Arts & Culture Maribyrnong will:

- Provide a stipend of **up to \$5,000** toward artist fees and/or production costs.
- Provide a dedicated theatre technician for an **8-hour work call** on the bump in / technical rehearsal day.
- The artistic team receives **full box office takings** for the production.
- Provide in-kind access to the Bluestone Church Arts Space to successful applicants.
- Cover the cost of hire fees for technical equipment in the facility for the duration of the residency.
- Program up to 3 productions for the Supported Season Program, one of which will be targeted to young audiences or families.

Artists offered either residency will:

- Provide a written evaluation and summary of the residency within 30 days of the residency ending. This evaluation will include images of their creative development or presentation, which the City of Maribyrnong can use for marketing and reporting purposes.
- Any future performances following the residency are required to acknowledge the City of Maribyrnong. Logos and acknowledgement details will be supplied to successful applicants.
- Pay a refundable \$200 security bond for the Bluestone Church Arts Space, prior to the start of the residency.
- Provide evidence of Public Liability insurance to the value of no less than \$10 million.
- Organise sufficient front of house and box office coverage for any public-facing activities.

Eligibility & Selection Criteria:

Who Can Apply?

- Applications are welcome from performing artists of all disciplines who reside in Melbourne's West (Cities of Maribyrnong, Brimbank, Hobsons Bay, Moonee Valley, Melton or Wyndham).
- Artists who live, work, study or have deep connections to the City of Maribyrnong will be prioritised.
- Presentations of original work (devised, written, or composed by the creative team) will be looked upon favourably.

Eligibility

- The application is received no later than **12pm on Friday 29 September, 2023**;
- Applicants must have an active ABN or be auspiced by an Incorporated Association;
- Applicants must have acquitted any previous Council grants or programs;
- Applicant must have public liability insurance to the value of no less than \$10 million and working with children checks (if the project involves young people) during the project;
- Applicants are encouraged to consider accessibility for artists and audiences, and are welcome to discuss this with the Arts and Culture team.

Assessment Criteria

Applications will be assessed by a peer panel that will select based on the following criteria:

Creative Development	Supported Season
<p>A demonstrated connection to Melbourne's West.</p> <p>A clearly articulated project demonstrating strong artistic practice.</p> <p>Proficiency in project management - a creative team with the demonstrated skills and relationships to successfully undertake the proposed project.</p> <p>Clear aims and objectives for the creative development of a new work.</p>	<p>A demonstrated connection to Melbourne's West.</p> <p>A clearly articulated project demonstrating strong artistic practice.</p> <p>An outcome that nurtures existing and/or develops new audiences.</p> <p>Proficiency in project management - a creative team with the demonstrated skills and relationships to successfully undertake the proposed project.</p> <p>A complete, balanced, and realistic budget.</p>

To Apply

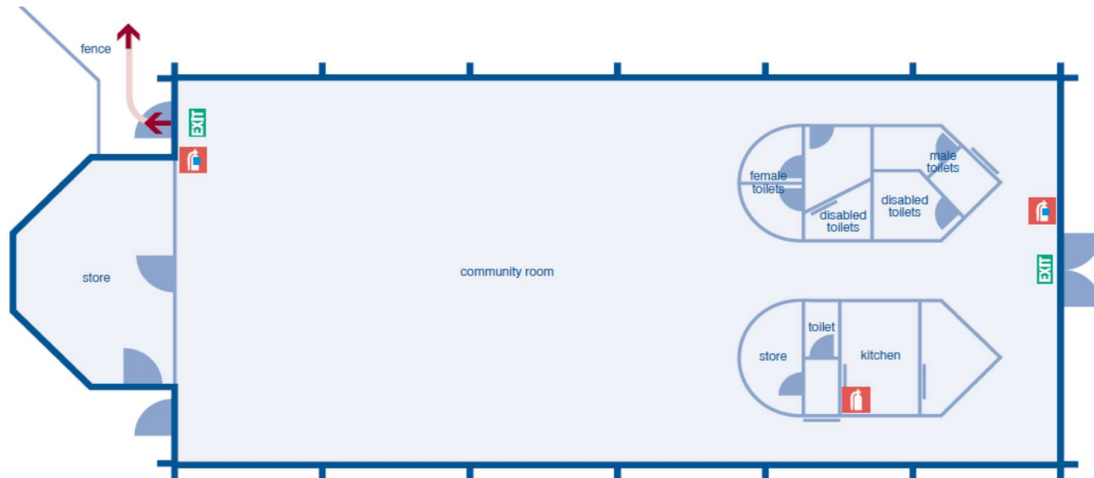
Complete the appropriate application form for your residency application: either the **Creative Development Program** or the **Supported Season Program**, available from the Maribyrnong Arts and Culture website:

<https://www.maribyrnong.vic.gov.au/arts-and-culture/>

Applications Close at 12pm on Friday 29 September, 2023

We will endeavour to notify artists of their application outcome within two weeks of submission. For further information or to discuss your application in more detail, contact Arts & Culture Maribyrnong on 03 9688 0200 or arts@maribyrnong.vic.gov.au

Bluestone Church Arts Space Floorplan



Dimensions: 10.5m x 23.5m, approximately 246m²

Please note: In 2024, there will be building works taking place beside the venue. There may be some disruption due to noise during business hours.