



Arts &
Culture

FREE ENTRY TO ALL PARTICIPATING VENUES

OPEN STUDIOS IN THE WEST

SATURDAY 25 & SUNDAY 26 NOVEMBER 2017

TAKE A WALK THROUGH THE CREATIVE SPACES OF THE INNER WEST

ONE NIGHT IN FOOTSCRAY

FRIDAY 24 NOVEMBER 5PM 'TIL LATE

Spend 'One Night in Footscray' and discover the art spaces, galleries, venues, and hidden in-between spaces within our city. Designed as a self-guided twilight journey through central Footscray, audiences and participants will be able to view and engage in a wide variety of high quality art of all different mediums in surprising locations. Gallery exhibitions, live music, performance and participatory art installations collide in this free program open to people of all ages.

One Night in Footscray aims to highlight the work of local artists, makers, emerging practitioners and students; create new opportunities for the public to engage with art in public spaces, as well as encourage the local community to see, experience and interpret Footscray, its people and places.

One Night in Footscray is a Footscray University Town initiative supported by Victoria University and Maribyrnong City Council. For more information and to check out the full program of activities, visit www.onenightinfootscray.com

**One Night in Footscray is proud to
launch Open Studios in the West 2017**



TAKE A WALK THROUGH THE INNER WEST AND DISCOVER...

Go behind the scenes during Open Studios in the West and discover the often hidden creativity of the artists who call this unique, progressive and thriving area home.

Now in its tenth year, the festival offers an unparalleled opportunity to explore the diverse range of artist's studios in the west, revealing unique spaces rarely opened to the public.

Take a self-guided tour through the creative hubs of local artists, performers, collectives and designers, as well as a number of permanent gallery spaces and exhibitions, and be fascinated by the sanctums from which artists explore their inspiration and create.

With opportunities to watch a demonstration, listen to an artist's talk, purchase a work directly from the artist or attend a free workshop, the Open Studios weekend is full of surprises.

So what are you waiting for? Go behind the scenes and discover!

www.maribyrnong.vic.gov.au/openstudios
facebook.com/artsandculturemaribyrnong
instagram.com/artsandculturemcc

WE ACKNOWLEDGE THAT WE ARE ON TRADITIONAL LANDS OF THE KULIN NATION.

**WE OFFER OUR RESPECT TO THE ELDERS OF THESE TRADITIONAL LANDS, AND THROUGH THEM
TO ALL ABORIGINAL AND TORRES STRAIT ISLANDER PEOPLES PAST AND PRESENT.**


NAME	PAGE	MAP	SATURDAY	SUNDAY
GALLERIES & EXHIBITIONS				
A Broken Suburban Dream: remnants of a Broken Psyche at Trocadero Art Space (Wallspace)	16	3	12pm–5pm	
Clickbait at Five Walls Projects	16	3	10am–3pm	
Committed at Trocadero Art Space (Gallery 1)	17	3	12pm–5pm	
Faces of Phoenix at Phoenix Gallery	17	1	11am–1pm	
‘How About a Rainbow?’ and ‘Grandstanding not Handstanding’ at Footscray Community Arts Centre	18	2	10am–4pm	
Kim Vernon at Trocadero Art Space (Gallery 2)	18	3	12pm–5pm	
Maribyrnong’s Pigeons at Braybrook Community Hub	19	4	10am–4pm	10am–4pm
On Return at Five Walls Projects	20	3	10am–3pm	
SEMBLANCE: an augmented reality exhibition outside VU at MetroWest	20	5	accessible anytime, day or night	
The Archival Reflex at Living Museum of the West	21	6	12pm–5pm	12pm–5pm
What are chives for? VCA Student Exhibition at Living Museum of the West	21	6	12pm–5pm	12pm–5pm
Victoria Polytechnic 2017 Graduate Exhibition at VU at MetroWest Gallery	22	5	10am–5pm	10am–5pm
VU Jam Jar at VU at MetroWest	22	5	2pm–9pm	2pm–9pm
लींदे म कमीमद (yahaan se dekhien) at Five Walls Projects	23	3	10am–3pm	


NAME	PAGE	MAP	SATURDAY	SUNDAY
ARTISTS AND COLLECTIVES				
Artsbox	8	7	11am–2pm	11am–2pm
BiGfiSh Workshop ☎	8	8	10am–3pm	10am–2pm
Catherine O’Leary	9	9	10am–4pm	10am–4pm
FizzWack Theatre Company: Misterman ☎	9	10	2pm, 8pm	2pm
Jack’s Reloaded	10	11		10am–2pm
Kindred Studios Creative Spaces ☎	10	12	11.30am–5.30pm	11.30am–5.30pm
Koningen Studio Living Gallery ☎	11	13	11am–6pm	1pm–5pm
Lis Johnson – Sculptor ☎	11	14	10am–5pm	
MREAM Studios	12	15	12pm–9pm	12pm–5pm
Paul Irving at 4123	12	16	10am–1pm	
The Art Room ☎	13	17	10am–3pm	11am–3pm
The Gaye Abandon School of Sewing and Upcycling ☎	13	18	11am–4pm	11am–4pm
Waterside Metal ☎	14	19	10am–4.30pm	11am–3pm

Street Art	24–25	various	accessible anytime, day or night	
------------	-------	---------	----------------------------------	--


Artists in Conversation	26–27	7	2pm–4.30pm	
-------------------------	-------	---	------------	--

All details and opening times submitted by Open Studios in the West participants are correct at time of printing.

 Galleries and Exhibitions

 Artist Studios and Collectives

 Artists in Conversation

 Street art

VENUES

- | | |
|--|---|
| 1. Phoenix Gallery | 11. Jack's Reloaded |
| 2. Footscray Community Arts Centre | 12. Kindred Studios Creative Spaces |
| 3. Trocadero Art Space & Five Walls Projects | 13. Koningen Studio Living Gallery |
| 4. Braybrook Community Hub | 14. Lis Johnson – Sculptor |
| 5. VU at MetroWest/MetroWest Gallery | 15. MREAM Studios |
| 6. Living Museum of the West | 16. Paul Irving |
| 7. Artsbox & Footscray Library | 17. The Art Room |
| 8. BiGfiSh Workshop | 18. The Gaye Abandon School of Sewing and Upcycling |
| 9. Catherine O'Leary | 19. Waterside Metal |
| 10. Bluestone Church Arts Space | |

Please note: map intended as a guide only. Not all streets included.



ARTSBOX ARTIST-IN-RESIDENCE: LIZ WALKER

56 Paisley Street, Footscray
www.lizwalker.com.au

During the residency Liz will work with the community to populate a wooden wall map. People passing by or visiting the Footscray Library will be invited to write messages to a friend or draw a picture on a selected map segment. The individual pieces will fit together to form a colourful and fun map of the City of Maribyrnong – a message map celebrating its diversity, culture and the people who live there.

Opening times

Saturday 25 November 11am-2pm
Sunday 26 November 11am-2pm

Drop in for

Mapping Messages: Visit Liz anytime during her November residency in Artsbox and participate in creating Mapping Messages

Saturday 11am-2pm, Sunday 11am-2pm

Artist talk

Liz is giving an artist talk in Artsbox on Saturday 25 November.
See page 27 for more details.

BIGFISH WORKSHOP

47 Moreland Street, Footscray
03 9689 6370

www.bigfish.com.au

Founded in 1991, BiGfiSh is a nationally recognised design and fabrication practice which specialises in the delivery of sculptural forms, urban features and play spaces. The Studio and Workshop is located adjacent to the Footscray Community Arts Centre and the Happy River Cafe. Come and have a peek behind the scenes to discover what they do and how they do it – there's lots of interesting, creative things going on within.

Opening times

Saturday 25 November 10am-3pm
Sunday 26 November 10am-2pm

Events and activities

Workshop tours: Visitors get to see works in progress, with talks and viewings at set times.

Saturday and Sunday at 11am, 12pm, 1pm and 2pm



CATHERINE O'LEARY

5 Hyde Street, Footscray
0412 541 292

www.catherineoleary.com.au

Catherine O'Leary is an Australian artist based in Melbourne who works primarily in the Textile Arts. With formal training in Fine Arts, Catherine's portfolio spans thirty years. Crafting wool felt by hand is a technique which Catherine has been exploring since the 1990s. She has mastered the art of felt making and utilises it as a vehicle for the creation of three dimensional forms. These forms consist of wearable garments such as jackets, dresses, skirts and innovative sculptures. Garments are constructed from very few pattern pieces, styled into elegant, evocative designs. Most of the fabric used has been recycled, making her practice sustainable and environmentally conscious.

Opening times

Saturday 25 November 10am-4pm
Sunday 26 November 10am-4pm

Drop in for

Demonstrations: Catherine will give demonstrations on wet felt making, and flat and sculptural forms.

Saturday and Sunday at 11am and 2pm

FIZZWACK THEATRE COMPANY: MISTERMAN

Bluestone Church Arts Space
8A Hyde Street, Footscray
fizzwacktheatre@gmail.com
www.fizzwacktheatre.com.au

FizzWack Theatre Company brings its second show to Melbourne, Misterman. After the success of FizzWack's inaugural production of Ruben Guthrie, Travis Handcock takes to the stage to perform this one-man show by Enda Walsh, directed by Kris Weber.

Originally performed by Cillian Murphy at the Black Box Theatre in Galway, Misterman explores the themes of sin, grief and religious mania. But how far will Thomas go to save the sin riddled town of Inishfree?

Performance times during Open Studios

Saturday 25 November 2pm and 8pm
Sunday 26 November 2pm

Cost

All tickets \$27: Groups 10+ \$24 a head.

Misterman runs 21 November to 2 December at Bluestone Church Arts Space



IMAGE: WORKING HERITAGE



JACK'S RELOADED

Magazine Way, Maribyrnong
www.jacksmagazine.org.au

Renew Australia and Working Heritage have partnered on this exciting initiative to activate a group of disused spaces within the Jack's Magazine heritage precinct. Hidden away on the banks of the Maribyrnong River and surrounded by leafy parks, the imposing bluestone walls, magazines and earth mounds of Jack's Magazine have connections to turning points in Victoria's history and industrial past. Jack's Reloaded activates the loading dock and shed, and the ammunitions store, incubating short-term uses by creative enterprises.

Opening times

Sunday 26 November 10am-2pm

KINDRED STUDIOS CREATIVE SPACES

3 Harris Street, Yarraville
info@kindredstudios.com.au
 9689 9859
www.kindredstudios.com.au

Explore the creative spaces of Kindred Studios, a purpose built space that offers private offices, co-working areas, rehearsal rooms, dance and yoga studios, photography studios, film studios, a theatre, event spaces and a bar. It is also the home of Victoria University and Polytechnic's music programs and hosts a variety of weekly events, classes and workshops.

Opening times

Saturday 25 November 11.30am-5.30pm
 Sunday 26 November 11.30am-5.30pm

Events and activities

During Open Studios in the West, Kindred Studios is offering guided tours on Saturday at 1.30pm and 2.30pm.



IMAGE: JORGE DE ARAUJO



KONINGEN STUDIO LIVING GALLERY

36 Urwin Street, Yarraville
www.koningenart.com

Recently relocating his complete studio from Brugge, Belgium to Yarraville after 12 years in Europe, a visit to Svein Koningen's studio will delight art lovers. His latest series Paradisaea, titled after the Bird of Paradise, will be exhibited during the Open Studios weekend. From minimal black and white works to his amazing Tulip works, a range of pieces will be on display at the studio. Koningen is a passionate abstract artist with his living studio showcasing many of his vibrant paintings.

Opening times

Saturday 25 November 11am-6pm
 Sunday 26 November 1pm-5pm

Events and activities

Artist talk: Svein will give an artist talk on the process of creating the Paradisaea Series and Tulip Series.

When

Saturday and Sunday at 2pm

LIS JOHNSON – SCULPTOR

1 Cromwell Parade, West Footscray
www.lisjohnson.com.au

Lis Johnson is a figurative sculptor with over 25 years professional practice. She creates large-scale public monuments, such as bronze statues of sporting legends and war memorials, as well as small-scale figures and objects in bronze and a wide range of materials. Her newly renovated studio and workshop is located inside Fundere Studios.

Opening times

Saturday 25 November 10am-5pm

Drop in for

Visitors can see works in progress and chat to the artist throughout the day.

Saturday 25 November 10am-5pm



IMAGE: LIS JOHNSON

IMAGE: ALLISON ORTON



MREAM STUDIOS

32 Hampstead Road, Maidstone
0415 192 559

mream.art@gmail.com

MREAM is an incorporated art studio which offers affordable studios for artists of all guises. The studio has a large light gallery, meeting room, community workspaces, and lock up art studios in various sizes. Some of the artists currently working at MREAM include painters, musicians, textiles artists and children's science classes. The studio also offers monthly life drawing and has an active exhibition program.

Opening times

Saturday 25 November 12-9 pm
Sunday 26 November 12-5pm



PAUL IRVING AT 4123

210 Whitehall Street, Footscray
0435 599 855

www.paulfrancisirving.com

Paul Irving has been involved in site specific installation and public art projects on a collaborative and solo basis since 1993. His works include sound and visual installation, public art, site specific sculpture, mechanical prototyping and has a current art practice based in Footscray. He has built props for Australian and international theatre, film and TV, and has had work in public projects at festivals such as Melbourne Fringe, Big West, and Moomba. He has exhibited locally and nationally with solo projects, and his work has been included in curated group shows at Heide Museum of Modern Art, McClelland Gallery and has work in private collections.

Opening times

Saturday 25 November 10am-1pm

Drop in for

Artist talk on hybrid arts practice in the built environment.

THE ART ROOM

125 Hyde Street, Footscray
erikagofton@iprimus.com.au
0407 197 106

www.the-art-room.com.au

The Art Room is an art class, workshop, studio and exhibition space and all round creative hub in Footscray. It is a place where you will develop a love of the creative process. You will learn about the skills and practical aspects of art making but will also be challenged and inspired to think and see differently. You will be in a supportive environment where you are encouraged to try new approaches, take risks and make mistakes. You will enjoy conversation and connection, develop friendships, and build your confidence in your creative practice. The Art Room is YOUR studio!

Opening times

Saturday 25 November 10am-3pm
Sunday 26 November 11am-3pm

Events and activities

Life Drawing:
Saturday 10am-12pm (book through website)

LANGRIDGE Student exhibition:
Saturday 1-3pm

Free drawing workshop:
Sunday 10.30am-12pm

Women in the Arts Forum:
Sunday 1-3pm (all welcome!)

IMAGE: IJUNA NELSON



IMAGE: NICOLE PHOTOGRAPHY

THE GAYE ABANDON SCHOOL OF SEWING AND UPCYCLING

122 Buckley Street, Footscray
gaye@gayeabandon.com
0434 915 967

www.schoolofsewingandupcycling.com.au

Offering fun and friendly sewing courses and textile workshops to students of all levels. We teach hand and machine sewing skills for practical and creative projects and encourage the re-use and re-purposing of preloved textiles

Pop in on Saturday or Sunday to check out our quirky space. See the sewing school in action and meet teacher and maker Gaye Naismith.

On Sunday feel free to stay awhile for some social sewing – bring your current sewing or mending project with you and Gaye will provide help and advice. Sewing machines provided.

Opening times

Saturday 25 November 11am-4pm
Sunday 26 November 11am-4pm

Drop in for

Social Sewing: Bring your current sewing or mending project – we'll provide help and a cuppa!

Saturday 1-4pm and Sunday 11am-4pm

WATERSIDE METAL ART STUDIO

60 Maribyrnong St, Footscray
www.watersidemetalart.org

Waterside Metal Art Studio (Waterside) is an artist blacksmith studio offering blacksmithing courses, quality forging supplies and tools, blacksmiths coke and a space where members can forge. The purpose of the studio is to provide a relaxed and inspiring space, where people can gather to pursue artistic and creative metal forging using traditional and/or modern tools and techniques.

Opening Times

Saturday 25 November 10am-4.30pm
 Sunday 26 November 11am-3pm

Please note: the forge will be closed between 12.30 and 2pm on both days.

Drop in for

Blacksmith demonstrations: Visitors are invited to watch teachers and former students conduct active hand forging activities and demonstrations over the duration of the opening hours.

When: Saturday 25 November 10am-12pm, 2-4.30pm, Sunday 26 November 11am-3pm

Events and activities

Artist talk: The public are invited to come and hear a 30 minute talk by Waterside instructors Estebaan Dante, Jack Wylestone and Bruce Rasmussen on the magic of forging, including an overview of the tools, techniques and creative possibilities.

When:

Saturday 25 and Sunday 26 November from 12-12.30pm both days.



IMAGE: WIL GLEESON



IMAGE: BLAINE BARNARD



IMAGE: ESTEBAAAN CORTEZ DANTE

IMAGE: GEN LOWIN



A BROKEN SUBURBAN DREAM: REMNANTS OF A BROKEN PSYCHE

Trocadero Art Space – Wallspace Gallery
1/119 Hopkins Street Footscray
www.trocaderoartspace.com.au

In Wallspace, which is located in the foyer of Trocadero Art Space, Gen Lowin's work, A Broken Suburban Dream: remnants of a Broken Psyche, will be on display. This work comments on the decay and aftermath of the Australian suburban ideals lived throughout summer, and its decay by the end of summer.

Opening times

Saturday 25 November 12-5pm

IMAGE: NIKOLAUS DOLMAN



CLICKBAIT

Five Walls Projects – Gallery 2
Suites 2, 3 and 4 – Level 1 / 119 Hopkins St
Footscray
info@fivewalls.com.au

0421 706 205

Nikolaus Dolman's exhibition Clickbait aims to explore how we experience images in contemporary culture – as an ephemeral mass driven by status, the entertainment industry and post-truth politics.

Opening times

Saturday 25 November 10am-3pm

IMAGE: TRIBUTE – MATTO LUCAS



COMMITTED

Trocadero Art Space – Gallery 1
1/119 Hopkins Street Footscray
www.trocaderoartspace.com.au

In Gallery 1 will be Committed, a group show by the Trocadero Art Space committee. The theme each committee member will take on is Pearl. Pearls are traditionally gifted on 12 year anniversaries, and 2017 is the 12th year Trocadero Art Space has been operating. The group show is an anniversary gift from one committee member to another, with each member creating new work not exhibited before.

Opening times

Saturday 25 November 12-5pm



FACES OF PHOENIX

Phoenix Gallery and Art Studio
72 Buckley Street, Footscray
9091 4700

An exhibition of young people by photographer Marlène Habib.

Studio portraits of the young people who attend Phoenix Youth Hub programs and short stories about their experiences and successes.

Opening times

Saturday 25 November 11am-1pm

Events and activities

Workshop: Join artist Renee Karacsay to create spontaneous and abstract work on canvas through the technique of the pallet knife.

When

Saturday 25 November 11am-1pm

IMAGE: AMY GUTHRIE



HOW ABOUT A RAINBOW? AND GRANDSTANDING NOT HANDSTANDING

Roslyn Smorgon Gallery and Gabriel Gallery at Footscray Community Arts Centre
45 Moreland Street, Footscray
8362 8000

www.footscrayarts.com

Footscray Community Arts Centre is opening the Roslyn Smorgon and Gabriel Galleries to themes of disability pride and resistance featuring local artist Larissa McFarlane in residency with Grandstanding not Handstanding, and group exhibition How About a Rainbow? from the artists in ArtLife. A colourful, experimental exploration of disability, identity and pride in varied art forms including paste ups, animation, painting, drawing and installation.

Opening times

Saturday 25 November 10am-4pm

Drop in for

Meet and greet: stop by FCAC to meet the artists involved and join a drop-in workshop

When

Saturday 25 between 11am-1pm

IMAGE: KIM VERNON, NANTAN METEORITE 2, 2015



KIM VERNON

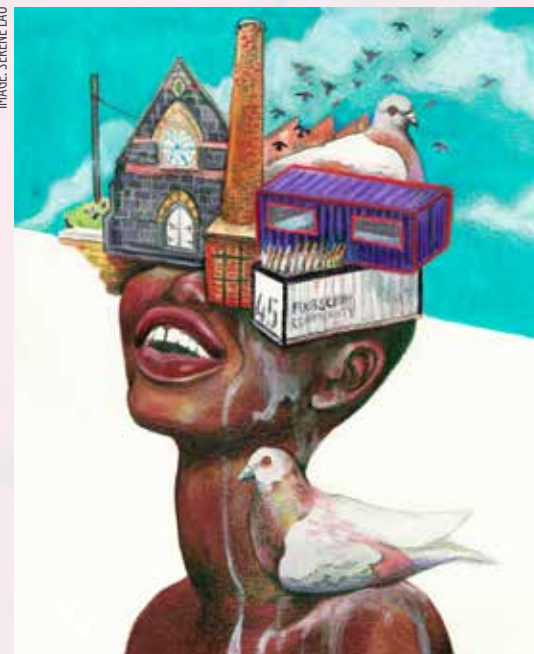
Trocadero Art Space – Gallery 2
1/119 Hopkins Street Footscray
www.trocaderoartspace.com.au

Trocadero's Gallery 2 is exhibiting a solo show of new paintings by Kim Vernon. His work explores his fascination of the properties of rocks and minerals, and research into the importance these objects play in the history of art and culture.

Opening times

Saturday 25 November 12-5pm

IMAGE: SERGEE LAU



MARIBYRNONG'S PIGEONS

Braybrook Community Hub
107-139 Churchill Ave, Braybrook
www.facebook.com/braybrookcommunityhub

From pigeons playing billiards, eating pho or enjoying a walk along the Maribyrnong River, Braybrook Community Hub has had the queerest pigeons of late in the month of November! With the help of the local community, this interactive project has been growing with unique storytelling pigeons doing everyday things in the west. See how this hub can be used as a creative space to carry out a project that requires a steady stream of participants for artists as this project is made in-house.

As an Open Studios in the West special, you are invited to add your own festival pigeon whilst you immerse yourself in the stories of how each of these pigeons travelled near and far to make Maribyrnong home and learn more about Maribyrnong.

Perhaps one day you wouldn't mind calling it home too.

Opening times

Saturday 25 November 10am-4pm
Sunday 26 November 10am-4pm

IMAGE: PAUL VAN KATWIJK



ON RETURN

Five Walls Projects – Gallery 1
Suites 2, 3 and 4 – Level 1 / 119 Hopkins St
Footscray
info@fivewalls.com.au
0421 706 205
www.fivewalls.com.au

Within each moment of everyday we engage with and encounter differing stimuli that construct our overarching environments and ourselves. Within his work, Van Katwijk investigates these fragments that go around his world and mind; ideas arrived at through his journey from his home in Holland to Australia. Through abstract paintings these impressions are realised, becoming a painted theory of forms that communicates Van Katwijk's understanding of his surroundings.

Opening times

Saturday 25 November 10am-3pm

SEMBLANCE: AN AUGMENTED REALITY EXHIBITION

Outside VU at MetroWest
138 Nicholson Street, Footscray
www.vu.edu.au/metrowest

Download the App, focus on the image, watch it come to life!

BYO technology to experience video artworks created by students and staff from Creative Arts at Victoria Polytechnic. Images located outside MetroWest, accessible anytime, day or night.

To view this video art exhibition, you need a smartphone or tablet with Internet connection (it will use your data unless you are on wifi). Install the free Aurasma app and create an account.

Search for and follow the channel SEMBLANCE to view our video "auras". Look for images that have the Aurasma logo underneath to scan with your device. Enjoy our augmented reality video experience!

Opening times

SEMBLANCE images are located outside VU at MetroWest, accessible anytime, day or night.



IMAGE: PH (2017), COURTESY OF RAFAEL ISHAK AND SUTTON GALLERY, MELBOURNE



THE ARCHIVAL REFLEX

Melbourne's Living Museum of the West
Pipemakers Park, Van Ness Avenue,
Maribyrnong
www.livingmuseum.org.au

Featuring artists Zoe Ali, Christos Tsiolkas, Julie Davies, Andrew Hazewinkel and Raafat Ishak, The Archival Reflex is an exhibition that engages with the site and collections of the Living Museum and considers how artists use and create archives in their practices.

Opening times

Saturday 25 November 12-5pm
Sunday 26 November 12-5pm

Events and activities

Exhibition opening celebration: Come down to Melbourne's Living Museum of the West and enjoy the opening celebrations for The Archival Reflex exhibition.

When

Saturday 25 November 3-5pm

WHAT ARE CHIVES FOR? VCA EXHIBITION

Melbourne's Living Museum of the West
Pipemakers Park, Van Ness Avenue,
Maribyrnong
www.livingmuseum.org.au

Taking into consideration the political and social implications of the Museum archive, second year Victorian College of the Arts Painting students will present new works that respond to the specificity of the site and the collection managed by the Living Museum of the West.

Opening times

Saturday 25 November 12-5pm
Sunday 26 November 12-5pm

Drop in for

The exhibition, performances and installations.

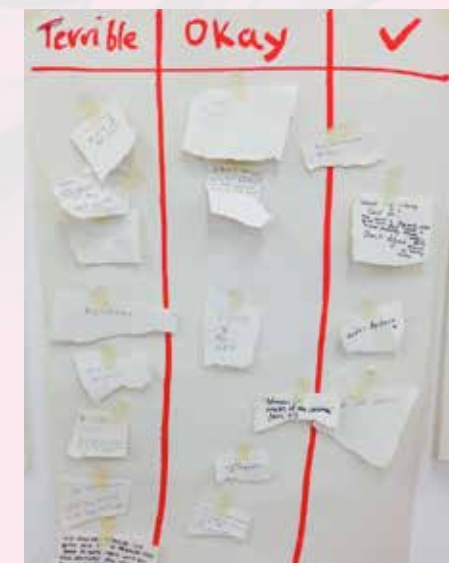


IMAGE: DETAIL FROM WORKING TITLE (2017), PENNY WALKER KEEFE



♥ VICTORIA POLYTECHNIC 2017 GRADUATE EXHIBITION

VU at MetroWest Gallery
138 Nicholson Street, Footscray
www.vu.edu.au/metrowest

Combining student's technical, creative and conceptual skills, this exhibition will present graduating student's works exploring a variety of classical, contemporary and digital techniques in painting, drawing and digital media. The Diploma of Visual Arts course gives students a sound understanding of art theory and history, taught by established and practicing artists and also includes guest speakers who talk about their work and art practice. Students gain valuable industry knowledge about developing sustainable professional practice and providing freelance services.

VU at MetroWest is Victoria University's community space in the heart of Footscray. It opened in 2014 and is part of VU's commitment to Footscray as a university town.

Opening times

Saturday 25 November 10am-5pm
Sunday 26 November 10am-5pm

♥ VU JAM JAR

Front right window of VU at MetroWest
138 Nicholson St Footscray
www.vu.edu.au/metrowest

The VU Jam Jar is a popup recording studio that will be located right in the front window of MetroWest in Footscray during the Open Studios weekend. It is a fun way to see and hear a working recording studio that showcases the activities of Victoria University's music and sound production students. Recordings will be engineered by the Certificate IV in Music Industry (Sound Production) students from VU.

Opening times

Saturday 25 November 2-9pm
Sunday 26 November 2-9pm



♥ ल॥ छैर कझमछ (YAHAN SE DEKHEN)

Five Walls Projects – Arcade Gallery
Suites 2, 3 and 4 – Level 1 / 119 Hopkins St
Footscray
info@fivewalls.com.au
0421 706 205
www.fivewalls.com.au

This is an experimental film and installation exploring the artist's return to her Aaji's (paternal grandmother's) farmhouse in Fiji after an absence of 11 years, 13 years after her passing. The film explores the landscape of the country side, and the house, slowly moving inwards to reveal an unchanged room: her room. Throughout the visuals we hear disembodied conversations, in Fijian Hindi and English. These conversations speak of the relationships the artist has with the house and with her family.

Opening times

Saturday 25 November 10am-3pm

STREET ART IN MARIBYRNONG

Visit some of the hidden works of art tucked away on the street corners, laneways and buildings throughout Maribyrnong. These street art murals are like little surprises waiting to be discovered. Some of these creations were officially commissioned by Maribyrnong City Council, some were shortlisted as part of the inaugural Footscray Art Prize, while others were private commissions.

Of course, we couldn't put in everything, so take a wander and see what you can discover. The nature of street art is that it's forever changing, so don't be too disappointed if the art has disappeared. It's all part of the fun!

Addresses listed for artworks are as close to the exact location as possible – in some instances, the works do not have a precise address.



UNTITLED 2014

Conrad Bizjak

86-88 Hopkins St (second floor, facing Moore Street)
Visible from carpark on the corner of Hopkins and Moore Streets



BUNJIL 2014

Heesco

2 French St, Footscray
Visible from Albert St



SALTWATER 2014

Amanda Morgan

Hopkins Street Rail Bridge, Footscray (north and south walls)
Between Franco Cozzo and Footscray Hotel



UNTITLED 2015

Paul Round, Heesco, Dvate, Makatron, Style/Duke, Conrad Bizjak

Rear of Asylum Seeker Resource Centre – 214-218 Nicholson St, Footscray
Visible from Albert St car park



UNTITLED 2015

Heesco, Conrad Bizjak, Sebastian Frasz

Rear of Centrelink – 75 Moore St, Footscray
Visible from Shelley St



UNTITLED 2015

Ross Thomassen

92 Hopkins St, Footscray
Visible from Dalmohoy St



UNTITLED 2015

Heesco, Conrad Bizjak, Sebastian Frasz, Ross Thomassen. Reinstalled Gary Stafford

6 Anderson St, Yarraville
Visible from carpark – 2 Anderson St, Yarraville



UNTITLED 2015

Ross Thomassen

30 Victoria St, Footscray
Visible from Paisley St



UNTITLED 2016

Cezary Stulgis

70 Pentland Ave, Seddon
Visible from Pentland Ave



FRAGILE ARCHITECTURE 2016

Amanda Morgan

186 Somerville Rd, Kingsville
Visible from Chirnside St



LITTLE REBELS 2016

Kelly Manning

176 Somerville Rd, Kingsville
Visible from Queensville St



MANDALA 2016

Carla Gottgens

175 Somerville Rd, Yarraville
Visible from Loch St



RIVERBED 2016

Mayfield Place

Rear of Zoom Fitness 1/287 Ballarat Rd, Footscray
Visible from rear car park – Coral Ave, Footscray



NEST 2016

Creature Creature

35 Bunbury St, Footscray
Visible from Cowper St



BACK STREET 2017

Tom Gerrard

216-226 Barkly St Footscray
Visible from Donald St



THE NEVER ENDING RACE 2017

Sugar

Victoria University, Buckley St, Footscray (Building T)
Visible from corner of Nicholson and Buckley Streets



MISS CITIZEN OF THE WORLD 2017

Heesco

Victoria University, Albert St, Footscray (Building D)
Visible from corner of Albert and Pilgrim Streets



MADDERN SQUARE

Various artists

Chambers St, Footscray
Visible throughout Madder Square

Saturday 25 November, 2-4.30pm

Footscray Library, 56 Paisley Street, Footscray
Free entry | **Bookings: 9688 0290 or 9688 0159**

Come and hear from six artists as they reflect and wax lyrical about their art practice and the books that have inspired their life and creative development. Artists Júlia Both, Jessie Deane, Jody Haines, Steven Rhall, James Voller and Liz Walker come from diverse backgrounds and work across different media. Some artists have been previously commissioned by Council to create or participate in visual arts projects. What are their sources of inspiration? What is life like for a professional artist? What does their work say about them and their community? This is your chance to find out more about life as a practising artist in an informal conversation setting.



JÚLIA BOTH

Júlia is a young Brazilian artist working in Melbourne. She grew up in Brazil in a family of environmentalists who taught her a deep love of nature, books and traveling, as well as the unwavering curiosity that continues to inspire her work. She moved to Australia to study visual design in 2010 and after graduating, started a successful partnership with another artist designing and painting public murals. Inspired by topics that range from biology and astronomy to feminist theory, Júlia's art uses visual symbols to stimulate the viewer to reflect on their relationship to the universe and themselves. With stylistic influences from street art, design and illustration, she works in extreme scales, painting large murals in public spaces and crafting small illustrations for intimate viewing experiences.

IMAGE: 'AND ALL THAT ONCE COVERED US BURNS AWAY IN THE FIRE RIVER OF YOU AND ME' 2016 – WATERCOLOUR ON PAPER



JESSIE DEANE

Jessie has been described as a "needlepoint rock star". She uses thread to hand stitch the often decaying industrial and urban landscapes of Melbourne's West. She is particularly interested in subverting the medium of needlepoint to explore dichotomies between the heavy-duty and the hand-made; between cold, rigid industrial materials and the warm malleability of the thread; between the 'masculine' world of industry, and the 'feminine' world of craft.

In 2014, Deane won the Melbourne Fringe Best Visual Arts Award for her exhibition (Thr)edifice. She was a finalist in the inaugural 2015 Victorian Craft Award and was shortlisted for the 2017 Footscray Art Prize.

IMAGE: STOLT TANKER – VIEW FROM WARMIES 2016 – TEXTILE, NEEDLEPOINT AND THREAD ON CANVAS



JODY HAINES

Using the forms of photography, sound and video to create her work, Jody develops a visual and audible response to the historical and the contemporary civic narrative – the story created by the multi layered and complex social grouping that is Australia. Largely underpinning the work is the desire to question and unhinge dominant ideologies and the social conditioning woven through the contemporary Australian cultural and social psyche. Through a suite of subversive works, Jody explores time and space, fiction and reality, past and present – the underrepresented and the often forgotten elements in our shared landscape.

IMAGE: DETAIL FROM 'SELF PORTRAIT #6' – FROM THE SERIES 'THIS IS NOT RESOLVED' 2017 – DIGITAL PHOTOGRAPHIC GICLEE PRINT



STEVEN RHALL

Steven is a visual artist whose interdisciplinary practice responds to the 'cultural landscape' of our contemporary world. He interrogates modes of cultural representation and memory using performance, carrying out public/private space interventions, process lead methodologies, sculpture and installation. Steven has exhibited at the NGV and lectures in the Master of Contemporary Art program at the Victorian College of the Arts.

IMAGE: DETAIL FROM 'LANDSCAPE 2017' – ACRYLIC ON WOOD



JAMES VOLLER

James incorporates photography and installation into his practice to examine place and time. He is interested in how these artistic fields can generate works that explore the social and architectural identity of towns and cities. His works exist predominantly in public space, but he also undertakes works and installations in gallery spaces.

James is currently researching how geography and social context influences and informs local Pacific Rim architecture, investigating the similarities and differences in domestic dwellings across countries of the Pacific Rim.

IMAGE: DETAIL FROM 'ENCHANTED' 2017 – DIGITAL PRINT ON LUMINOUS VINYL



LIZ WALKER

Liz uses an extensive range of resources gathered from around the inner city and rural sites to construct sculpture, assemblage, installations and ephemeral site specific responses to people, time and place. She is fascinated by the aesthetics of decay and the visual language created by the passage of time; willingly exploiting this to magnify the underlying issues explored in her work. In recent years, community engagement through creative workshops and collaborative project delivery has become increasingly important to her practice and development as an artist.

IMAGE: DETAIL FROM 'KINDLE – PSYCHO' 2012 – RECYCLED BOOK COVERS, TIMBER AND POLYMER PAINT



Illustration and booklet design
by Jennifer Piper piperdoes.com



**Arts &
Culture**