

Why not donate?

Hard waste collection is for items that are broken or cannot be reused. Please consider if the materials you are throwing away can be sold, recycled or donated instead.



If your furniture, clothes or electronics are in good condition, you can contact the following groups.

Brotherhood of St Laurence

Give your furniture, equipment and other goods a new life by donating them to a charity, like the Brotherhood of St Laurence.

The Brotherhood of St Laurence offer a **free donation collection service**, and your goods will raise much-needed funds to create lasting change for disadvantaged Australians.

To book a free collection call **1300 DONATE** (1300 366 283) or visit 1300donate.org

West Welcome Wagon

If you have good quality second-hand items, such as children's equipment, homewares, fridges, washing machines or furniture, you can donate it to West Welcome Wagon and help support asylum seekers in Melbourne's West.

To donate items, please contact donate@westwelcomewagon.org.au

St Vincent DePaul

If you have furniture and other items in good condition, you can give them a new life, and help to reduce landfill. Call your local Vinnies to facilitate pick up of your furniture, which can then be sold or used in one of their support services.

To organise a donation or collection, contact

Phone: **1800 621 349**

Email: material.donations@svdp-vic.org.au

Inner West Melbourne Buy Sell Swap

If you have furniture, goods or equipment you can swap or sell it via the inner west buy-swap-sell group on Facebook. This group is for residents who live in the suburbs of Footscray, West Footscray, Kingsville, Maidstone, Maribyrnong, Seddon and Yarraville. List items for collection and give your items a new life.

www.facebook.com/groups.136129059844341/

Garage Sale Trail

Maribyrnong Council is a proud supporter of the Garage Sale Trail, a weekend of garage sales and stalls in October. Residents can register a stall and sell second-hand goods.

To register your interest, visit

www.garagesaletrail.com.au

Please note: that items in 'good condition' should be in good working order with no tears, stains, chips or broken pieces.

To find out more, visit the Don't throw it! Reuse and Recycle page.

www.maribyrnong.vic.gov.au/Residents/Waste-Services/Other-waste-disposal-options

Your Hard Waste Collection

Your Hard Waste Collection occurs on
week
of each month.

IMPORTANT ADVICE

Please ensure your waste is placed in the **designated collection area**. If unsure, talk to your building manager.

Collection will occur between **6am and 6pm Monday - Wednesday** on your collection week.

Place items no earlier than Saturday and no later than 24 hours before the collection date.

Non-compliant or late waste **will not be collected**.

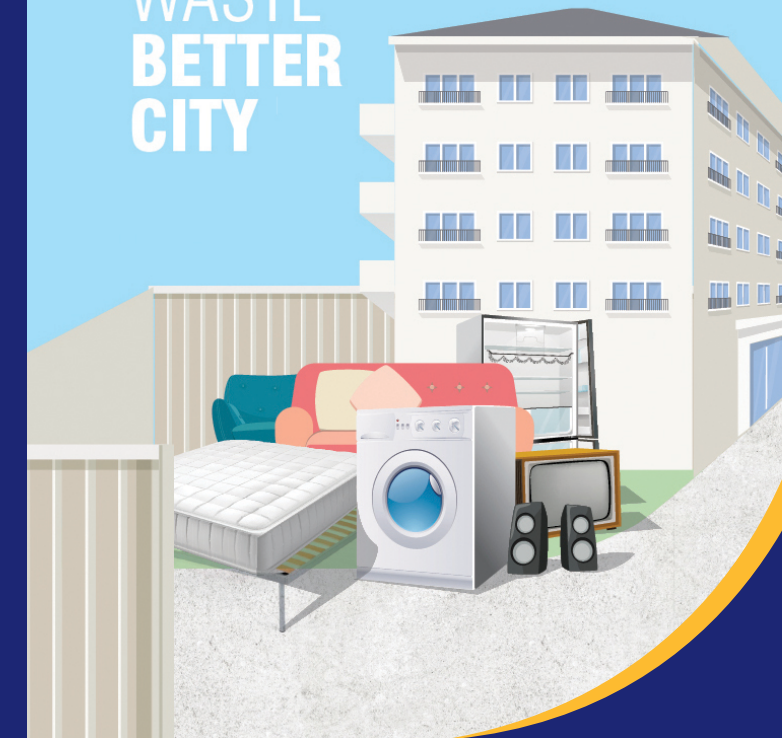
The information in this document may be important to you. If you want to know more about this document but require assistance with translation please call the Translating and Interpreting Service (TIS) on 131 450 and ask the interpreter to call Council on your behalf.

www.maribyrnong.vic.gov.au

HARD AND GREEN WASTE

Apartment service
for 12+ units

LESS
WASTE
BETTER
CITY



Maribyrnong
CITY COUNCIL



对
NAI

CÓ

SÌ

نعم

General Hard Waste



Household furniture



Mattresses and/or bases
(maximum 2 pieces)



Electrical appliances



Carpet, underlay,
floor rugs and clothing



Crockery, ceramics

Metal Waste



White goods (doors off)
including fridges, ovens,
washing machines
and dishwashers



Electrical and
household appliances



Small car parts and tools



Empty tins (lids off)



Scrap metal

Place your items
neatly in the **designated hard
waste collection area.**

Green Waste



← Bundles up to 1.5 metres long →

Bundles tied with natural fiber or twine



↑
Bundles
up to 30
centimetres
in diameter
↓

Clippings or green waste in cardboard boxes



不对

OXI

KHÔNG

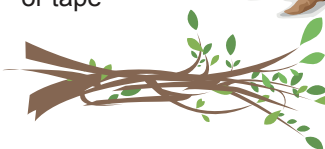
NO



Any items left on the nature strip/crossover will **NOT** be collected



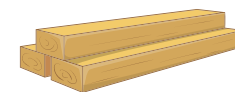
Green waste in plastic
bags, large tree stumps,
or bundles tied with
synthetic material
or tape



Cardboard and newspaper
or domestic waste



Glass and mirrors



Timber longer than
1.5 metres and pallets



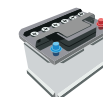
Renovation or building
materials, rocks, rubble,
soil, bricks or concrete



Liquid waste, chemicals,
garden sprays, paint
and oil



Hazardous or offensive
waste including asbestos



Tyres, batteries, mobile
phones, coil springs or
car body parts



Gas bottles

Where can the NO items be taken?

'No' Items can be taken to one of the following.
Charges may apply.

- City of Moonee Valley Transfer Station -
188 Holmes Road, Moonee Ponds - Ph: 8325 1730
- Brooklyn Transfer Station - 174 Old Geelong Road,
Brooklyn - Ph: 9314 2297
- Melbourne City Recycling - 416 Sommerville Road,
Tottenham - Ph: 9315 3340

Chemical and Hazardous Waste

Detox Your Home - Free, safe and easy-to-use
chemical disposal service. To dispose of household
paint, batteries and fluorescent lights, visit the
permanent drop off site at Moonee Valley Transfer
Station, 188 Holmes Rd, Moonee Ponds.

Please note that the permanent drop-off sites do not
accept toxic household chemicals. These can be
disposed of at Detox your home collection points. To
find out more, visit the 'Detox Your Home' website,
or call (03) 8626 8700.