

# CITY OF MARIBYRNONG STREET PLANTING STRATEGY





## **Maribyrnong Street Planting Strategy**

Adopted August 27, 2013

---

## Contents

1	INTRODUCTION	5
2	POLICY CONTEXT	6
3	THE VALUE OF URBAN TREES	8
4	OBJECTIVES & ACTIONS	9
5	PLANTING STRUCTURE	10
6	PLANTING PROGRAMS	19
7	SPECIES SELECTION	22
8	STREET & SPECIES LISTS - 10 YEAR PLANTING PROGRAM	25
9	WHEN PLANTING OCCURS	45
10	PROCESSES	45
	APPENDIX 01 - PREFERRED TREE SPECIES LIST	
	APPENDIX 02 – NON-PREFERRED TREE SPECIES LIST	
	APPENDIX 03 - INSTALLATION NOTES	
	APPENDIX 04 - MAINTENANCE NOTES	
	APPENDIX 05 - ASSESSING TREE CONDITION	

*The street trees of the City of Maribyrnong are a valued and essential asset which enhance the image and appeal of the City and improve the health and wellbeing of the community.*







## 1 Introduction

The street trees of the City of Maribyrnong are a valuable community asset and are the most visible element of the City's green infrastructure. They help keep our City healthy and have a range of environmental benefits which include reducing summer temperatures, reducing storm water run-off, providing habitat, capturing airborne pollutants and contributing to the wellbeing of the community. The City's street trees are a key element in establishing identity and character by emphasising important boulevards and defining neighborhoods. The importance of a resilient street tree network will increase in future years as Maribyrnong experiences rises in both population and urban density.

The City's street trees contribute to resident wellbeing and livability by mitigating the adverse impacts of a modern urban environment. A key challenge the Strategy addresses is the selection criteria of tree species that will perform best in local conditions. The Maribyrnong street tree network must be resilient against pest and diseases, be tolerant of periodic low rainfall and be able to thrive in local soils.

The lifespan of a healthy tree is long and will benefit multiple generations. This Strategy provides the framework and tools for Council to plan for and manage its street trees over the coming decade, ensuring the City's streets are fully planted and gaps in the street tree network are routinely filled.

This Strategy establishes the framework for the coordinated long term planning and management of the City's street tree population, and will help residents, local businesses and developers understand the value of the street tree network and Council's vision for a greener, more livable Maribyrnong. The key objectives of this Strategy establish:

- A 10 Year Planting Program
- Street tree species selection
- Long term management of the City's street tree network
- Street tree removal and replacement procedures

## 2 Policy Context

The **Council Plan (2009-2013)** is Council's principal strategic document detailing the vision for Maribyrnong and establishing its key commitments and aspirations.

The **Council Plan (2009-2013)** states in its key commitment area of *Amenity* that:

*"We will create a well planned City and improve it's amenity by creating streets, neighbourhoods and public places that are safe, sustainable, well used and the pride of the community".*

This confirms Council's aspiration to:

*"Be green and improve both the streetscape and the environment".*

*"Improve and maintain the quality and accessibility of social and physical infrastructure through development and implementation of policies and actions to improve the built environment".*

The success of this Strategy will be measured by:

*"Number of new / replacement trees planted".*

The **Council Plan (2009-2013)** states in its key commitment area of *Environmental Sustainability* that:

*"We value our precious environmental resources. In partnership with our community we will lead, trial and promote sustainable practices".*

This confirms Council's commitment to:

*"Reduce its carbon emission in keeping with it's 'Becoming Carbon Neutral' commitment".*

*"Educate, inform and lead by example in environmental sustainability".*

Success in this Strategy will result in:

*"Reduction in Council's greenhouse gas emission, water consumption and use of petrol".*





The City of Maribyrnong **Municipal Strategic Statement (2011)** (21.06-1 Urban Design) focuses on contextual issues of climate change, population growth, sustainability, urban consolidation and the increased importance of a well-designed public realm.

In recent decades, the City's population has increased significantly and is due to grow by a further 34,000 residents by 2030. Large areas of industrial land have been rezoned and are becoming available for residential and mixed-use development. The City is developing a varied residential character, including the Activity Centres of Footscray and Highpoint where higher density development is encouraged. Street trees will be a key piece of green infrastructure that will help the City remain livable by providing amenity and environmental benefits during this period of population growth and increased density.

Council also operates within a larger metropolitan strategic planning framework. Recently the State Government has commenced the drafting of a new **Metropolitan Planning Strategy**. This Strategy reflects a contemporary focus on the issues of creating a distinctive Melbourne, urban consolidation, environmental resilience and the health of the urban environment.

This Street Tree Strategy details how the objectives from these broad strategic documents can be achieved.



### 3 The Value of Urban Trees

#### Image & Amenity

Canopy cover improves the aesthetic quality of the streetscape, provides shelter and shade and encourages greater social use of the street.

Naturestrip plantings also improve the legibility of streets by helping demarcate safe pedestrian space from vehicle space and aids wayfinding for both pedestrians and motorists. The tree canopy that encloses a residential street alters a driver's perception of the roadway and can help reduce excessive speed.

Trees bring a range of colours, textures, scents, patterns and sounds into the urban environment. They also depict seasonal and weather changes, adding ephemeral qualities to the urban landscape.

Trees give a strong sense of place, identity and order by providing character and structure to streets, neighbourhoods and suburbs. Boulevard and avenue plantings of a singular dominant species are strong contributors to the City's identity and act as linear gateways through the municipality.

#### Urban Heat Island Effect

Urbanised areas can be several degrees hotter than rural areas on days of high temperature. Unshaded, large, hard and dark coloured surfaces such as roads, car parks, buildings and rooftops absorb the sun's heat causing local ambient temperatures to rise. This Urban Heat Island Effect can impact upon public health, energy consumption and air quality.

The canopies of mature trees reduce the severity of the Urban Heat Island Effect by shading buildings and infrastructure from the sun, reducing cooling costs and extending the life of buildings and infrastructure.

Council has conducted an audit of the existing street tree network and areas of potential heat island hotspots have been targeted for additional tree planting.

#### Historical Context

Trees in the built environment form an important layer of an area's cultural identity. Particular planting palettes can signify an historical period or style of development in the same way as the architecture of a place or neighbourhood can. Often the largest and most grand trees have a rich, historical significance of their own.

#### Environmental Benefits

Trees help ameliorate air pollution by absorbing pollutants and trapping airborne particles within foliage. They reduce glare, absorb carbon dioxide from the atmosphere and produce oxygen. Furthermore, the porous structure of tree branches and foliage tempers wind turbulence and reduces urban wind tunnel conditions. Tree canopies are also part of the local ecosystem and contribute to the available habitat and fauna corridors. Urban trees moderate the effects of climate change by reducing erosion, retaining soil moisture and reducing local temperatures by shading buildings and hard surfaces.

#### Economic Considerations

By improving the amenity of the local street network, trees can help support commercial activity in retail centres and increase residential property values. Trees can also create energy savings by shading properties and vehicles, and reduce the need for artificial cooling. Deciduous trees further contribute by allowing solar access in winter to reduce heating costs.





## 4 Objectives & Actions

This Street Tree Strategy establishes the planting of over 11,000 new street trees in the City of Maribyrnong by 2023. It will support, manage and increase the City's street tree network as an essential public green infrastructure asset, essential to the City's appeal and function.

### Objectives

The Street Tree Strategy will target:

#### Amenity

- Establish a planting hierarchy for highways, boulevards, avenues and streets to enhance the City's identity and increase legibility.
- Improve the wellbeing of residents by creating green, attractive and sustainable streets.

#### Environmental Sustainability

- Improve the performance of the City's street trees by identifying species best suited to local conditions and which are resilient to pests, disease and drought.
- Make the City better equipped to combat the negative effects of climate change, i.e. Urban Heat Island Effect.
- Increase canopy cover to mitigate summer temperatures.
- Contribute to Councils commitments of "Becoming Carbon Neutral" and reducing potable water use, **Council Plan (2009-2013)**.
- Increase canopy cover to reduce air pollution by intercepting airborne particulates and the uptake of greenhouse gasses.

### Policy Outcomes

- Planting framework
  - 10 Year Planting Program
  - Replacement Planting (Infill)
  - Major Project Planting
- Provides clear process for new tree requests and tree removals.
- Provides a selection criteria to determine street tree species.
- Provides direction on planting roads under the jurisdiction of others i.e. VicRoads.

### Measures

- Build a diverse street tree population of many families, genera and species.
- Pursue holistic streetscape design where street trees are integrated with drainage and services works and other asset upgrades.
- Promote retention of healthy trees within proposed development sites.
- Advocate for increased tree numbers in new developments.

### Management

- Adopt and maintain industry best-practice for the selection, installation, establishment and management of street trees.
- Regularly assess the street tree network to inform a proactive maintenance regime. This is to include the implementation and management of a GIS compatible street tree inventory.

## 5 Planting Structure

The City's street tree planting structure is reflective of the hierarchy of the street network. For example, boulevards and arterial roads are lined with species of significant stature and local streets are planted with smaller species appropriate to the scale of a local street.

Street trees can reflect and enhance the character of a neighbourhood. Planting native species into streets surrounding the Maribyrnong River, creeks and bushland reserves is desirable as is the planting of deciduous, exotic species in long established, historic areas such as Footscray, Seddon and Yarraville.

Existing avenues of street trees that contribute to neighbourhood character shall be retained and enhanced by progressive infill planting. Streets with poorly performing trees, or high numbers of missing trees, shall be prioritised for replanting which shall include the use of a new species if appropriate.

### Boulevards

A preference is made towards the planting of a single species that exhibits grand stature and strong form. The species may be repeated in verges and medians to form a double or triple row. This method is adopted to create the strongest possible visual and spatial cues to reference the roadway's status and importance to the City. This planting arrangement also assists wayfinding and contributes to the City's identity and sense of place. The use of a singular species on a given roadway also helps to streamline maintenance programs. Road design considerations in specific circumstances, such as clear zones, may make it necessary to install trees of alternate species in outer separators, naturestrips and medians where appropriate.

### Boulevards & Gateways Master Plan

The Boulevards and Gateways Masterplan (Page 11) illustrates the City's network of key thoroughfares and gateways. These nodes are important contributors to the City's image and function which require specific attention. This masterplan is a key document for the future planning and design of these sites and for collaborative projects with VicRoads.

### VicRoads

Council will engage with VicRoads to establish mutual understanding and agreement on the Boulevard and Gateways Masterplan's objectives. Council will also seek to align the strategic objectives of both organisations to help facilitate the implementation of the masterplan.

### Local Streets

It is preferable that local streets are planted with a single tree species. In some circumstances, a pair of species may be appropriate to accommodate:

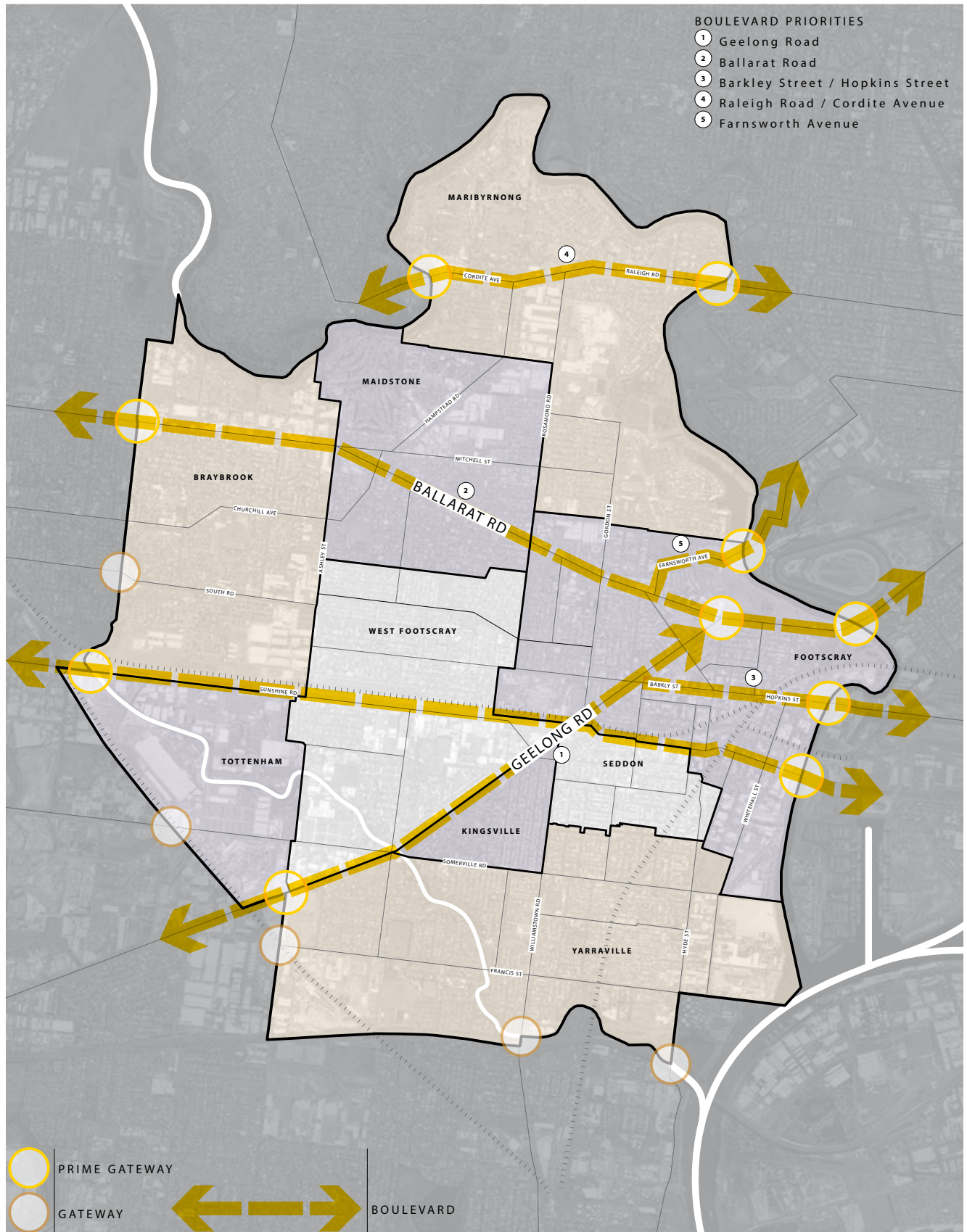
- Site conditions
- Street proportions
- Soil type
- Proximity to buildings and infrastructure including overhead wires.

Whilst the use of a singular species is preferred, a pair of species may be appropriate where:

- One side of the street or the median is more heavily constrained by services e.g. overhead wires. In this situation an alternate species may be used beneath the wires.
- There is a precedent or pre-existing pattern for the planting of alternating species.

The street tree planting of activity centres and whole neighbourhoods will be consistent with the urban design outcomes envisioned by Urban Design Frameworks and other strategic Council documents.

**CITY OF MARIBYRNONG**  
BOULEVARDS & GATEWAYS MASTERPLAN





## Significant Trees

Council highly values significant avenues and individual species of significant trees.

This Strategy protects all significant street trees across the City, with the intention of adding further significant plantings over time.

Significant street trees that contribute to the heritage of a precinct shall be continually managed as recommended by the Maribyrnong City Council Heritage Review, **Historic Places, Volume 6, Significant Trees in the City of Maribyrnong (2000)**.

All tree works that involve significant tree species shall be referred to Council's arborist for assessment and/or treatment.

## Street Tree Character Types

The City has five typical street tree character types.

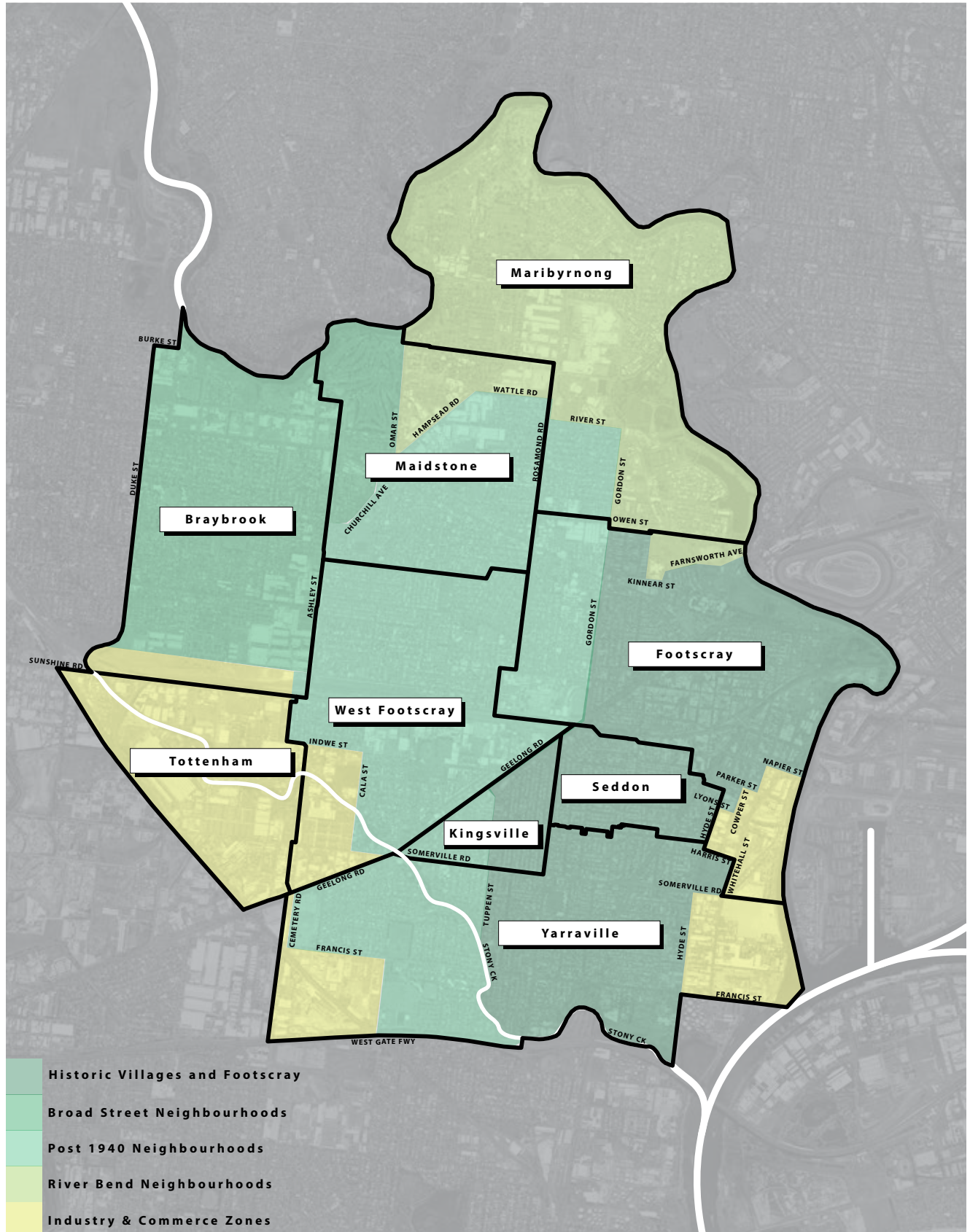
- River Bend Neighbourhoods.
- Broad Street Neighbourhoods.
- Post 1940 Neighbourhoods
- Footscray & Historic Villages
- Industry & Commercial Zones

These character types have evolved over time and relate to a range of factors including street width, location of services, land use and building density. Each of these character types occur throughout the City, however they dominate five distinct areas shown on page 13. These specific areas range from the narrow historic village streets of Seddon and Yarraville, the more open neighbourhood streets in West Footscray and Maidstone, to the broad accommodating streets of Braybrook and Maribyrnong. The increasing widths of the road network moving from the east of the City to the west or from the south to the north, accommodate different, and typically larger, street tree species.





**CITY OF MARIBYRNONG**  
STREET TREE CHARACTER PRECINCT PLAN



## River Bend Neighbourhoods

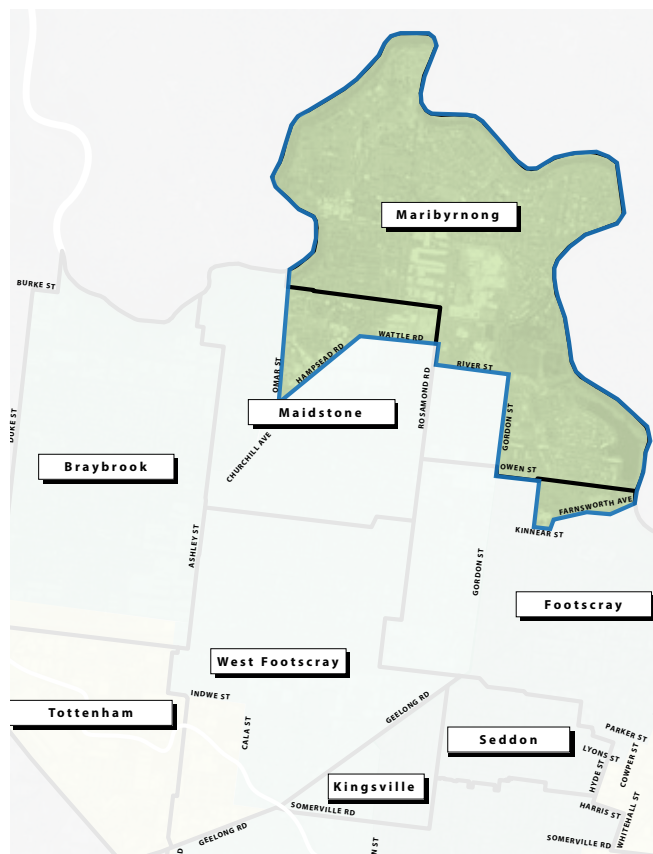
River Bend Neighbourhoods typically contain medium to large mature trees in wide streets. The housing stock is often of a 1950-2000 era with generous setbacks and established front gardens creating a spacious and natural setting, which is further enhanced by the proximity to the Maribyrnong River. Native species typify this natural setting and are accommodated well within the existing street network. Contemporary infill development with underground service provides the opportunity for planting trees with significant canopies that will not conflict with overhead services.

### Indicative Species List:

*Angophora costata* Smoothed Barked Apple

*Callistemon citrinus* Lemon Scented Bottlebrush

*Corymbia citriodora* Lemon Scented Gum





## Broad Street Neighbourhoods

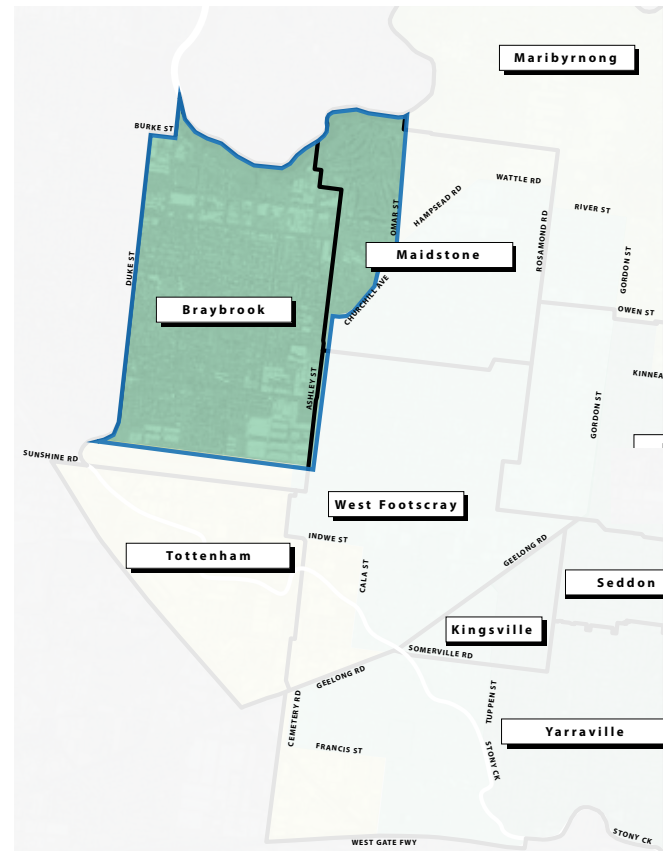
Broad Street Neighbourhoods typically consist of 1950-2000 housing stock with generous setbacks. The streets are typically wide and well suited to the planting of medium to large tree species. Street tree plantings are presently modest however provide good opportunities for further planting of medium and large street trees.

### Indicative Species List:

*Angophora costata* Smoothed Barked Apple

*Corymbia citriodora* Lemon Scented Gum

*Ulmus parvifolia* Chinese Elm



## Post 1940 Neighbourhoods

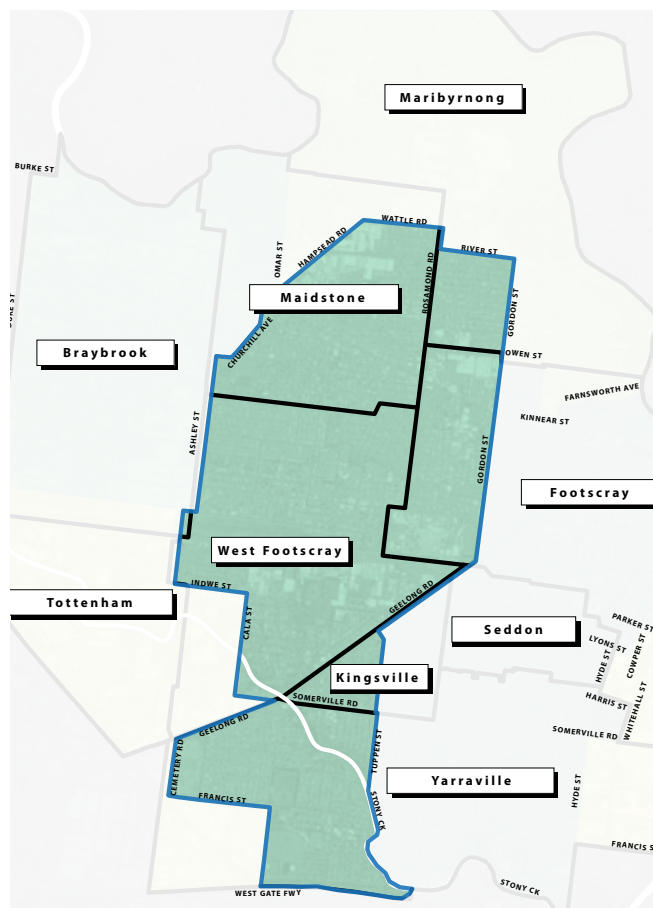
Possessing a broad, open and leafy environment characterised by wider streets and naturestrips than the neighbourhoods to the east, these neighbourhoods are further enhanced by the opportunity for mature trees in front gardens due to generous setbacks. Established exotic species appear in most streetscapes and gardens that create a cohesive experience centred around avenue plantings where large mature trees can be accommodated.

### Indicative Species List:

*Pyrus calleryana* Pear

*Quercus palustris* Pin Oak

*Ulmus parvifolia* Chinese Elm





## Footscray & Historic Villages

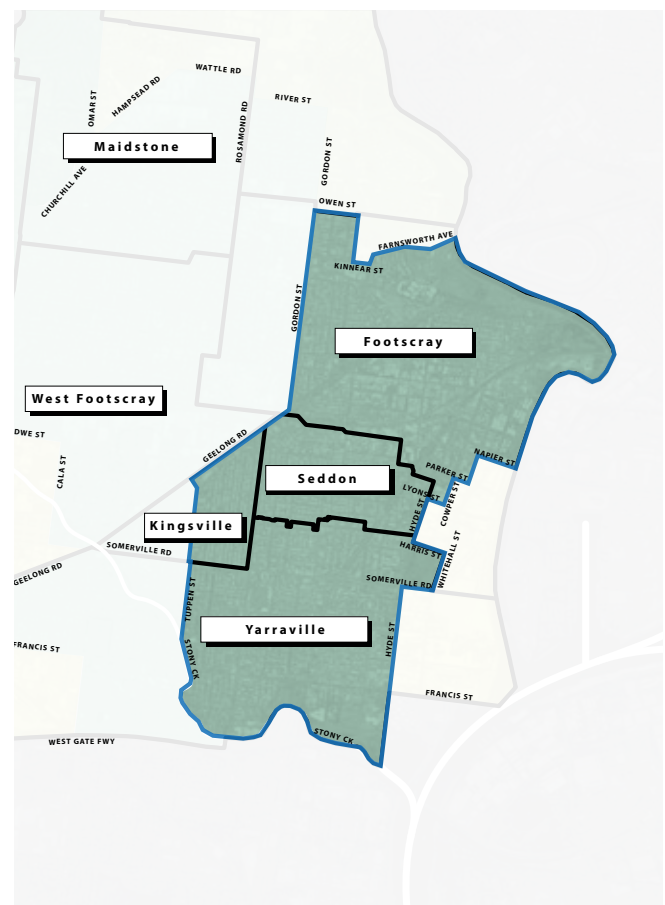
Narrow road and naturestrip widths of the historic grid network favour small deciduous trees that create an intimate garden suburb feel. Small lot size and compact lot layout of housing stock built prior to 1940 reduces the opportunity for mature trees on private land, making street trees valuable. Wide streets, or where planting within road cut-outs has occurred, creates highly valued avenues of mature exotic species that have popularised the village neighbourhoods of Yarraville, Seddon and Footscray.

### Indicative Species List:

*Lagerstroemia indicar* Crepe Myrtle

*Pyrus ussuriensis* Manchurian Pear

*Ulmus parvifolia* Chinese Elm





## Industry & Commercial Zones

Dominated by commercial and industrial activity, these streets possess generous widths to accommodate heavy vehicles. Tree planting has historically not been highly valued within these industrial zones and are therefore noticeably absent. Opportunity exists for widespread tree planting of these streets to help achieve Council's environmental goals and improve the aesthetic qualities of these streets.

### Indicative Species List:

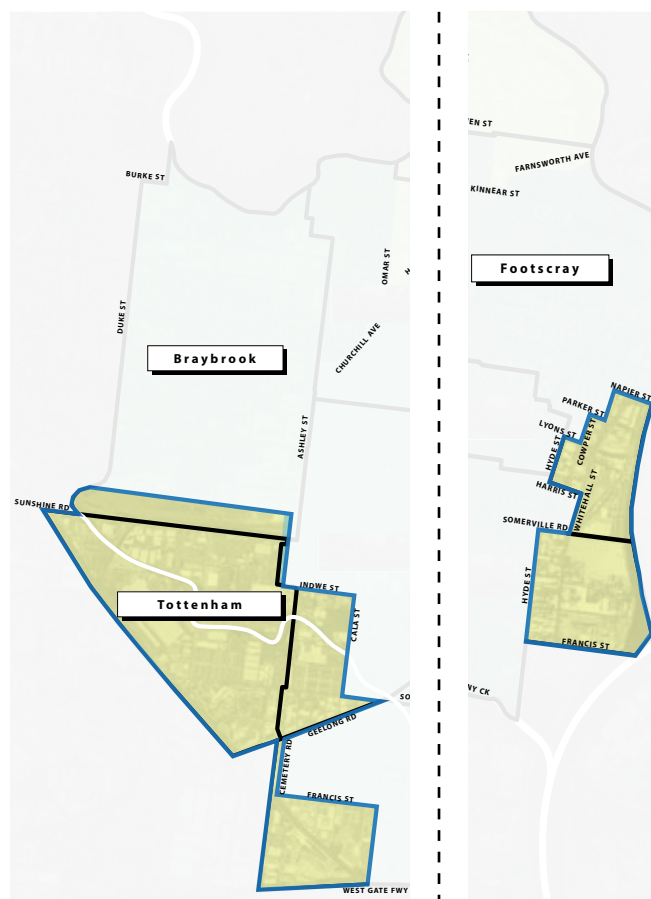
*Angophora costata* Smoothed Barked Apple

*Corymbia citriodora* Lemon Scented Gum

*Quercus palustris* Pin Oak



Youell Street, Footscray





## 6 Planting Programs

There are three categories of street tree planting undertaken by Council:

- Replacement Planting
- 10 Year Planting Program
- Major Project Planting

### Replacement Planting

Replacement planting is the installation and establishment of individual trees as a result of resident requests or tree removals, including storm damage and vandalism.

Trees in this category will be planted in response to either one of the following:

- A tree is removed following approval by Council's Arborist and a replacement tree is required.
- The request for a street tree is approved and the location is not included in an existing planting program.

Tree locations for replacement planting generated from the above instances will be programmed as they arise. Replanting will typically occur in the planting season of April to September. Depending on the timing of the request, replanting may occur in the following year, subject to a number of factors including but not limited to:

- A high volume of locations requiring replanting at the time a new location is logged.
- The time of year the new location is logged as planting will only occur during the (cooler) planting season.
- The current planting season being shortened due to drought or other adverse weather conditions.
- The availability of tree stock that satisfies the criteria within this Strategy.
- Imminent infrastructure or capital works programmed for that location.

## 10 Year Planting Program

The 10 Year Planting Program is a priority based planting program for each street in the City. The first targeted areas for planting will be the streets with the highest street tree vacancy rates. By targeting the streets with the highest vacancy rates the benefits of every new tree planted will be maximized.

### Street Tree Planting Prioritisation

To identify which streets in the City have the lowest rates of street tree planting, Council initiated an audit that took the following steps.

- 1) The audit was conducted across the entire City using up-to-date aerial imagery and Geographic Information Systems (GIS) to capture data for each street.
- 2) A vacancy percentage was then calculated for each street based on the number of existing street trees compared with how many potential trees that street could accommodate.
- 3) Based on the vacancy percentage, each street has been assigned a priority rating of A to J, A being the highest priority and J being the lowest priority.

Figure 1 below demonstrates the proportion of the City's streets assigned a priority rating from 'A' being the highest priority rating, to 'J' being the lowest priority rating. 63 streets have been assigned a priority rating of 'A' because they currently don't have any, or very few street trees at. Encouragingly, 490 streets have been assigned a priority rating of 'J' and have more than 80% of potential street tree locations presently planted with a tree.

The 10 Year Planting Program will assist Council in planning for future tree planting seasons, allocate appropriate resources and enable accurate budgets to be forecast.

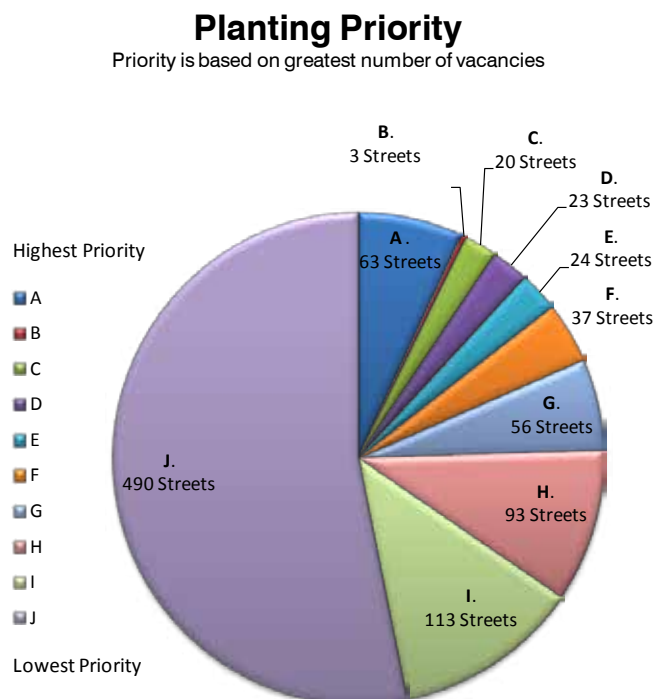
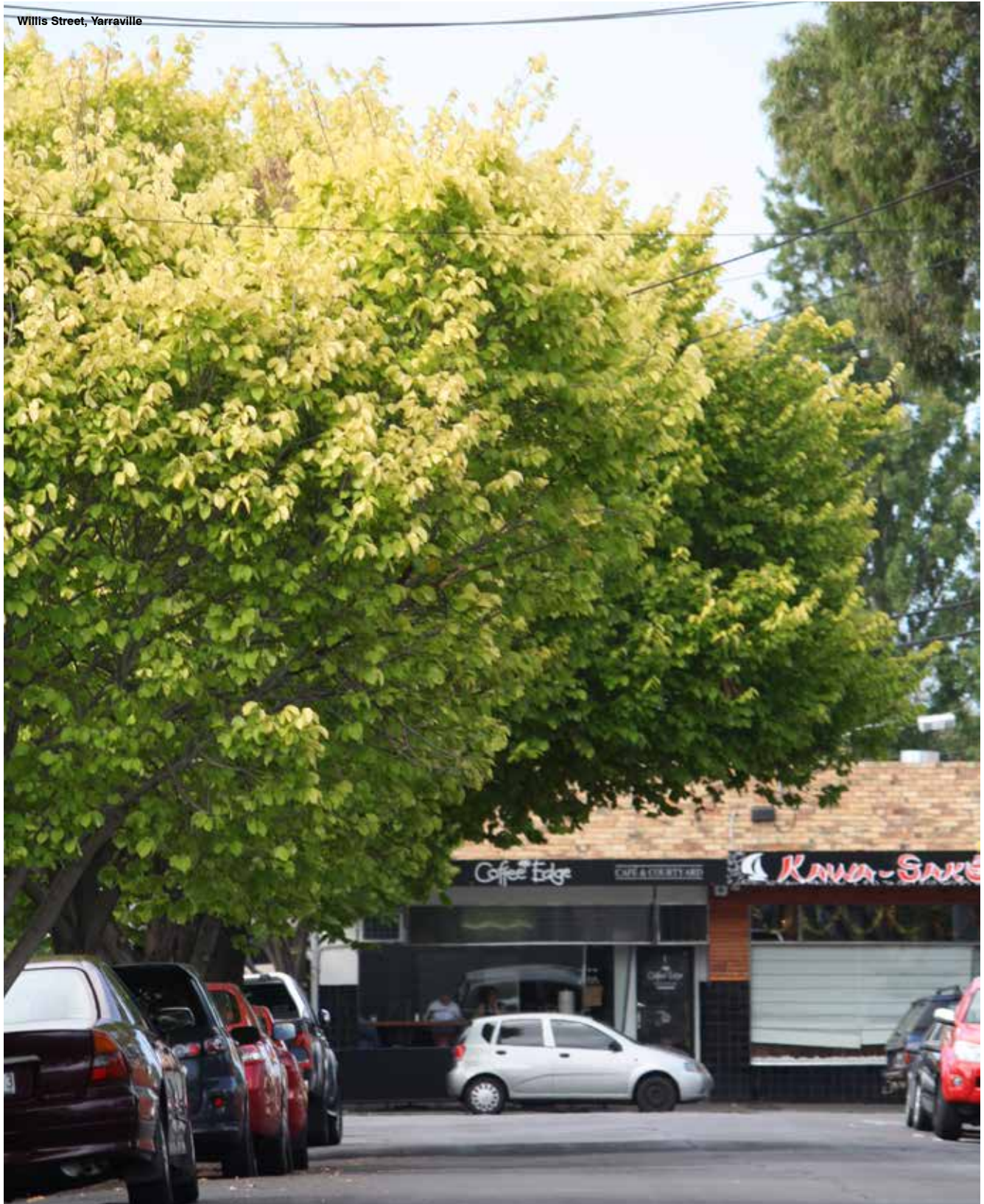


Figure 1.



## Major Project Planting

Street tree planting works will arise from the Highways and Arterials Masterplan, commercial projects, residential projects, Council's capital works program and other infrastructure projects. These are categorised as Major Project Plantings and are to be consistent with the Street Planting Strategy.



## 7 Species Selection

### Background

The range of tree species that will thrive in the street environment of Maribyrnong is limited by their adaptability to the reactive clay soils that typify our area. These soils can remain wet in winter yet can be dry and crack in summer months. Soils are often disturbed, compacted or are comprised of imported fill making successful tree establishment difficult. Appropriate planting and establishment methods are critical in these circumstances.

To ensure the City's street tree population is resilient against pests and disease, it must include a diverse mix of species, genera and families to limit the tree networks vulnerability to a potential outbreak.

Deciduous exotic species are often well suited to an urban environment. They provide dense summer shade, autumn colour and solar access to buildings in winter. Historically across much of the City, deciduous exotics have been utilised to great effect, a pattern Council intends to continue. The species which generally predominates a street and is performing well will continue to be used.

### Key Performance Areas

Tree species selected for use in the City are chosen for their ability to perform in three key areas of *climate adaption*, *amenity* and *management*. If proven to perform across each of these three areas, a tree is considered to best serve the needs of the Maribyrnong community.

### Climate Adaption

Careful species selection and strategic planning will help ensure the City's urban trees continue to thrive and provide an increasingly valuable network of green infrastructure. The urban trees of Maribyrnong must:

- Be tolerant of extended periods of consistently high temperatures.
- Be tolerant of drought conditions after establishment.
- Contribute to the available habitat for native fauna including birdlife and insects. Increasing density and urban infill is reducing the amount of available space for vegetation that can provide shelter and sustenance to native fauna.





## Amenity

Historically, trees have been planted in our urban areas for their ability to alleviate the harsher qualities of life in the urban environment. Maribyrnong is experiencing increases in population and urban intensification due to changing land use patterns, its proximity to the centre of Melbourne and the key transportation routes that pass through it. The urban trees of Maribyrnong must:

- Be attractive with a form, colour, flower and/or scent that is appealing to the community. Urban trees with strong aesthetic characteristics are appreciated by the community and contribute to the City's identity and sense of place.
- Provide a significant canopy that can shade the ground, infrastructure, homes and other buildings. Large, dense canopies help to reduce localised summer temperatures, energy used for cooling and in the case of deciduous trees, heating costs during winter months.
- Have low allergenic qualities by not producing pollen, sap, or any other part that is proven to cause an allergic reaction. Urban trees often grow in close proximity to the homes, schools and workplaces of our community. Selecting a tree species that is not going to cause undue stress is beneficial to both the community and the longevity of the tree.

## Management

Urban trees are an essential piece of green infrastructure that is alive, growing and long lived - many prospective urban tree species can reasonably be expected to live beyond 60 years of age. Urban trees must be continually managed, however careful species selection at the time of planting can help reduce future asset management demands that conflicts with other pieces of infrastructure. The urban trees of Maribyrnong must:

- Have a manageable root system. Some tree species are known to have vigorous root systems that can conflict with pavement surfaces, neighbouring properties and water and sewerage infrastructure.
- Be resilient against both pest and disease attack. Tree species that are susceptible to the attack of pests and disease that are endemic to Maribyrnong should not be planted. Tree species that are susceptible to the attack of pests and disease which are not yet, but could, become endemic to Maribyrnong should similarly be avoided. A large scale infestation could cause irrevocable damage to Maribyrnong's urban forest and present a large cost to the City for management, remedial works and replanting.
- Tolerate the reactive clay soils that typify Maribyrnong. The long term growth and ultimate success of an urban tree is closely linked to its adaptability to grow in the soil it is planted into. Selection of tree species that not only tolerate, but thrive in Maribyrnong's reactive clay soils, help ensure the tree's ongoing health and contribution to the City's environment.



## Proposed Species

Species which are proposed for use in Maribyrnong typically arise from the following:

- Tree species that have been successfully used in Maribyrnong or greater Melbourne in the past.
- A tree species that has been used or trialled successfully in a nearby municipality.
- A tree species, cultivar or variety that is commercially available.
- Meets the key performance areas stated within this strategy.

Refer Preferred Tree Species List, Appendix 01, page 49.





## 8 Street & Species Lists

### Braybrook

For each street, this list displays the nominated tree species, priority ranking, approximate number of new trees required and year of the 10 Year Planting Program to be planted.

Street Name	Tree Species	Common Name	Priority Ranking	No. of Trees	Year to be Planted
ACTION STREET	Confirmation Pending		I	10	9
ADAMSON STREET	<i>Eucalyptus leucoxylon</i> 'Megalocarpa'	Yellow Gum	H	32	4
ADRIAN COURT	<i>Malus ioensis</i> 'Plena'	Bechtels Crab Apple	E	4	1
AIR FORCE AVENUE	<i>Pyrus calleryana</i>	Callery Pear	H	8	6
ALMA STREET	<i>Melia azederach</i>	White Cedar	J	0	10
ALWYN COURT	<i>Ulmus parvifolia</i>	Chinese Elm	J	1	10
ANNESLEY STREET	<i>Angophora costata</i>	Smooth Barked Apple	A	15	9
ARTHUR STREET	<i>Melia azederach</i>	White Cedar	I	4	9
ASH STREET	<i>Tristaniopsis laurina</i>	Water Gum	A	12	1
ASHLEY STREET	<i>Pyrus ussuriensis</i>	Manchurian Pear	F	89	1
ATHOL STREET	<i>Callistemon salignus</i>	Willow Bottlebrush	A	12	1
BALLARAT ROAD	<i>Ulmus parvifolia</i>	Chinese Elm	I	123	6
BALMORAL STREET	<i>Melia azederach</i>	White Cedar	I	18	7
BANK STREET	<i>Callistemon vininallis</i>	Weeping Bottlebrush	A	9	10
BARRIE COURT	<i>Melia azederach</i>	White Cedar	A	11	2
BARRON AVENUE	Confirmation Pending		J	10	9
BEACHLEY STREET	<i>Pyrus ussuriensis</i>	Manchurian Pear	J	0	10
BOOMERANG AVENUE	<i>Pyrus calleryana</i>	Callery Pear	J	0	10
BRADFORD COURT	<i>Pyrus calleryana</i> 'Bradford'	Bradford Bear	J	2	10
BREEN STREET	<i>Pyrus calleryana</i> 'Chanticleer'	Chanticleer Pear	A	5	10
BURKE STREET	<i>Eucalyptus melliodora</i>	Yellow Box	E	38	2
BURNETT AVENUE	<i>Corymbia ficifolia</i>	Red Flowering Gum	F	20	3
BUTLER STREET	<i>Ulmus parvifolia</i>	Chinese Elm	F	21	3
CANDY CRESCENT	Confirmation Pending		J	0	10
CARLTON COURT	<i>Ulmus parvifolia</i>	Chinese Elm	J	1	10
CARLTON STREET	<i>Ulmus parvifolia</i>	Chinese Elm	J	2	10
CASTLEY CRESCENT	<i>Agonis flexuosa</i>	Willow Myrtle	F	24	3
CHERRY CRESCENT	<i>Banksia marginata</i>	Silver Banksia	E	7	2
CHEWTON STREET	<i>Corymbia maculata</i>	Spotted Gum	J	4	9
CHURCHILL AVENUE	<i>Corymbia citriodora</i>	Lemon Scented Gum	H	78	4
COMMERCE STREET	<i>Olea europaea</i> 'Stativa'	Olive	E	8	2
COMMERCIAL ROAD	<i>Ulmus parvifolia</i>	Chinese Elm	J	1	10
CRANWELL STREET	<i>Eucalyptus leucoxylon</i>	Yellow Gum	I	55	6
CREAL AVENUE	Confirmation Pending		I	12	9
CREMORNE STREET	<i>Tristaniopsis laurina</i>	Water Gum	G	10	4
CRICK STREET	<i>Corymbia ficifolia</i>	Red Flowering Gum	E	6	2
CROSS STREET	<i>Fraxinus griffithii</i>	Evergreen Ash	J	8	9
CROTHERS STREET	<i>Lophostemon confertus</i>	Brush Box	D	24	1
DAISY COURT	<i>Corymbia ficifolia</i>	Red Flowering Gum	J	1	9
DANTUM GROVE	<i>Eucalyptus leucoxylon</i> 'Megalocarpa'	Yellow Gum	J	8	9
DARNLEY STREET	<i>Malus ioensis</i> 'Plena'	Bechtels Crab Apple	J	6	9
DAVID COURT	<i>Malus ioensis</i> 'Plena'	Bechtels Crab Apple	A	3	1
DEDRICK GROVE	<i>Tristaniopsis laurina</i>	Water Gum	J	2	10
DEVONSHIRE ROAD	<i>Acer buergerianum</i>	Trident Maple	C	19	1
DILLON STREET	<i>Acacia pendula</i> (East)	Weeping Myall (East)	I	4	7
	<i>Melia azederach</i> (West)	White Cedar (West)			
DOBSON CRESCENT	<i>Ulmus parvifolia</i>	Chinese Elm	F	11	3
DODD STREET	<i>Agonis flexuosa</i>	Willow Myrtle	H	5	7
DORA STREET	<i>Acacia implexa</i>	Lightwood	H	2	7
DUKE STREET	<i>Corymbia maculata</i>	Spotted Gum	I	25	7
EAST COURT	<i>Pyrus ussuriensis</i>	Manchurian Pear	J	0	10
ELIZABETH STREET	<i>Pyrus ussuriensis</i>	Manchurian Pear	J	0	10
ELLIS COURT	<i>Tristaniopsis laurina</i>	Water Gum	F	4	4
ELVA COURT	<i>Tristaniopsis laurina</i>	Water Gum	E	7	2
ENDERBY COURT	<i>Acacia podalyrifolia</i>	Queensland Silver Wattle	G	3	6
ERROL STREET	<i>Eucalyptus eximima</i>	Yellow Bloodwood	I	10	9
ESSEX STREET	<i>Koelreuteria paniculata</i>	Golden Rain Tree	J	0	10
EVANS STREET	<i>Eucalyptus leucoxylon</i> 'Megalocarpa'	Yellow Gum	A	30	9
GARDEN DRIVE	<i>Ulmus parvifolia</i>	Chinese Elm	I	7	8
GILBERT STREET	<i>Eucalyptus leucoxylon</i> 'Megalocarpa'	Yellow Gum	A	16	9
GRAHAM STREET	<i>Lophostemon confertus</i>	Brush Box	F	9	3
HAMPDEN STREET	<i>Lophostemon confertus</i>	Brush Box	H	15	6
HANCOCK CRESCENT	<i>Lophostemon confertus</i>	Brush Box	J	3	10

Street Name	Tree Species	Common Name	Priority Ranking	No. of Trees	Year to be Planted
HANNA COURT	<i>Corymbia ficifolia</i>	Red Flowering Gum	H	3	7
HARGREAVES CRESCENT	<i>Lophostemon confertus</i>	Brush Box	H	72	4
HEBB STREET	<i>Lophostemon confertus</i>	Brush Box	D	5	2
HILLARY STREET	<i>Callistemon salignus</i>	Willow Bottlebrush	A	8	10
HINKLER STREET	<i>Malus ioensis</i> 'Plena'	Bechtels Crab Apple	J	3	10
HOTHAM STREET	<i>Eucalyptus torquata</i>	Coral Gum	J	0	10
HOWDEN CRESCENT	<i>Melia azederach</i>	White Cedar	D	22	1
HOWELL PLACE	<i>Ulmus parvifolia</i>	Chinese Elm	J	0	10
HUGHES STREET	<i>Tristanopsis laurina</i>	Water Gum	J	7	9
JACKSON STREET	<i>Agonis flexuosa</i>	Willow Myrtle	J	0	10
JADE COURT	<i>Pyrus calleryana</i>	Callery Pear	J	1	10
JOY STREET	<i>Ulmus parvifolia</i>	Chinese Elm	J	0	10
KANNAN BOULEVARD	<i>Eucalyptus leucoxylon</i> 'Megalocarpa'	Yellow Gum	J	4	10
KENNETH STREET	<i>Melia azederach</i>	White Cedar	E	17	2
KENROSS COURT	<i>Acacia podalyriifolia</i>	Queensland Silver Wattle	H	7	7
KENT STREET	<i>Pyrus usseriensis</i>	Manchurian Pear	J	2	10
KING STREET	<i>Olea europaea</i> 'Sativa'	Olive	J	2	10
KINGSFORD STREET	<i>Angophora costata</i>	Smooth Barked Apple	H	7	7
LACY STREET	<i>Angophora costata</i>	Smooth Barked Apple	A	46	9
LAWN CRESCENT	<i>Lophostemon confertus</i>	Brush Box	D	24	1
LAWSON STREET	Confirmation Pending		J	3	10
LAWTON STREET	<i>Ulmus parvifolia</i>	Chinese Elm	C	5	1
LILY STREET	<i>Ulmus parvifolia</i>	Chinese Elm	H	17	6
LISA COURT	<i>Malus ioensis</i> 'Plena'	Bechtels Crab Apple	F	3	3
LORD PLACE	<i>Pyrus usseriensis</i>	Manchurian Pear	J	1	10
MARGARET CRESCENT	<i>Lophostemon confertus</i>	Brush Box	E	11	3
MARIN LANE	<i>Allocasurina verticillata</i>	Drooping Sheoke	E	8	2
MARNOO STREET	<i>Pyrus usseriensis</i>	Manchurian Pear	H	8	7
MARSDEN PARADE	Confirmation Pending		J	5	9
MCLENNAN STREET	<i>Ulmus parvifolia</i>	Chinese Elm	J	4	10
MELON STREET	<i>Ulmus parvifolia</i>	Chinese Elm	J	1	10
MELROSE STREET	<i>Eucalyptus leucoxylon</i> 'Megalocarpa'	Yellow Gum	H	8	7
MENZIES STREET	<i>Ulmus parvifolia</i>	Chinese Elm	G	10	6
MIDDLETON STREET	<i>Callistemon salignus</i>	Willow Bottlebrush	G	8	4
MOAMA STREET	<i>Melia azederach</i>	White Cedar	G	13	4
MORGAN STREET	<i>Lophostemon confertus</i>	Brush Box	J	1	10
MULLENGER ROAD	<i>Eucalyptus melliodora</i>	Yellow Box	A	18	1
MURRY AVENUE	Confirmation Pending		H	2	7
MYALLA STREET	<i>Tristanopsis laurina</i>	Water Gum	E	23	2
MYAMYN STREET	<i>Lophostemon confertus</i>	Brush Box	G	15	5
NORTH COURT	Confirmation Pending		J	0	10
OAK COURT	<i>Olea europaea</i> 'Sativa'	Olive	J	2	10
OPAL TERRACE	<i>Pyrus calleryana</i>	Callery Pear	C	5	1
ORANGE STREET	<i>Pyrus usseriensis</i>	Manchurian Pear	J	2	10
PALMER STREET	<i>Ulmus parvifolia</i>	Chinese Elm	J	5	10
PRITCHARD AVENUE	<i>Pyrus usseriensis</i>	Manchurian Pear	J	8	10
PROBERT STREET	Confirmation Pending		J	5	10
RAVENHALL STREET	<i>Malus floribunda</i>	Japanese Crab Apple	J	0	10
RENNISON STREET	<i>Stenocarpus sinuatus</i>	Fire Wheel Tree	F	16	2
RILEY COURT	<i>Agonis flexuosa</i>	Willow Myrtle	I	3	9
ROCHESTER STREET	<i>Eucalyptus leucoxylon</i> 'Rosea'	Yellow Gum	J	7	9
ROSE STREET	<i>Olea europaea</i> 'Sativa'	Olive	J	1	10
RUBY WAY	<i>Pyrus calleryana</i>	Callery Pear	F	56	2
RUTLAND STREET	<i>Lophostemon confertus</i>	Brush Box	A	4	10
SAPPHIRE COURT	<i>Pyrus calleryana</i>	Callery Pear	H	3	7
SCOTLAND STREET	<i>Malus ioensis</i> 'Plena'	Bechtels Crab Apple	J	1	10
SEDGE CLOSE	<i>Melia azederach</i>	White Cedar	J	1	10
SHEPHERD STREET	<i>Pyrus usseriensis</i>	Manchurian Pear	I	12	9
SHOWERS STREET	<i>Melia azederach</i>	White Cedar	H	8	7
SIMS STREET	<i>Agonis flexuosa</i>	Willow Myrtle	J	1	10
SKEWES STREET	<i>Pyrus usseriensis</i>	Manchurian Pear	J	3	10
SOUTH COURT	Confirmation Pending		J	0	10
SOUTH ROAD	<i>Lophostemon confertus</i>	Brush Box	H	80	3
STEWART STREET	<i>Agonis flexuosa</i>	Willow Myrtle	J	8	10
STORES COURT	<i>Pyrus calleryana</i>	Callery Pear	H	5	7
SUNSHINE ROAD	<i>Angophora costata</i>	Smooth Barked Apple	I	51	6
TRANSPORT STREET	<i>Corymbia ficifolia</i>	Red Flowering Gum	G	5	4
TRELOAR COURT	Confirmation Pending		J	0	10
TRELOAR CRESCENT	<i>Ulmus parvifolia</i>	Chinese Elm	J	8	10
TURNER CRESCENT	<i>Pyrus usseriensis</i>	Manchurian Pear	J	4	10
VINE COURT	<i>Eucalyptus torquata</i>	Coral Gum	C	5	1
VINE STREET	<i>Lophostemon confertus</i>	Brush Box	J	9	9
WALKER PLACE	<i>Lophostemon confertus</i>	Brush Box	G	3	6



Street Name	Tree Species	Common Name	Priority Ranking	No. of Trees	Year to be Planted
WATSON GROVE	<i>Eucalyptus eximia</i> (East)	Yellow Bloodwood (East)	J	1	10
	<i>Ulmus parvifolia</i> (West)	Chinese Elm (West)			
WEST CENTRAL PARK AVENUE	<i>Melia azederach</i>	White Cedar	J	2	10
WILSON STREET	<i>Corymbia ficifolia</i> (South)	Red Flowering Gum (South)	D	33	1
	<i>Callistemon salignus</i> (North)	Willow Bottlebrush (North)			
WINDSOR STREET	<i>Lagerstroemia indica</i>	Crepe Myrtle	J	0	10
WINJEEL COURT	<i>Pyrus calleryana</i>	Callery Pear	J	3	10
WIRRAWAY AVENUE	<i>Pyrus calleryana</i>	Callery Pear	D	3	2

## Footscray

For each street, this list displays the nominated tree species, priority ranking, approximate number of new trees required and year of the 10 Year Planting Program to be planted.

Street Name	Tree Species	Common Name	Priority Ranking	No. of Trees	Year to be Planted
ADELAIDE STREET	<i>Pyrus calleryana</i> 'Chanticleer'	Chanticleer Pear	J	0	10
ALBERT STREET	<i>Laurus nobilis</i>	BaY Laurel	J	0	10
	<i>Melia azederach</i>	White Cedar			
ANN STREET	<i>Eucalyptus leucoxylon</i> 'Megalocarpa'	Yellow Gum	J	0	10
ARTHUR STREET	<i>Pyrus calleryana</i> 'Chanticleer'	Chanticleer Pear	J	6	9
BALLARAT ROAD	<i>Ulmus parvifolia</i>	Chinese Elm	I	178	5
BARKLY PLACE	<i>Lophostemon confertus</i>	Brush Box	J	1	10
BARKLY STREET	<i>Acer platanoides</i> 'Columnare'	Column Norway Maple	G	77	4
BATMAN STREET	<i>Callistemon viminalis</i>	Weeping Bottlebrush	J	0	10
BEAME STREET	<i>Eucalyptus mannifera</i> 'Little Spotty'	Red Spotted Gum	A	20	9
BEAUREPAIRE PARADE	<i>Corymbia citriodora</i>	Lemon Scented Gum	J	0	10
BEECH STREET	<i>Pyrus calleryana</i> 'Capital'	Ornamental Pear	A	26	9
BEEVERS STREET	<i>Eucalyptus sideroxylon</i>	Red Ironbark	H	15	6
BLACKSTON STREET	<i>Allocasuarina spp</i>	Sheoak	G	6	9
BRISTOW STREET	<i>Corymbia maculata</i> (North)	Spotted Gum (North)	J	1	10
	<i>Eucalyptus torquata</i> (South)	Coral Gum (South)			
BUCKINGHAM STREET	<i>Tristanopsis laurina</i>	Water Gum	G	9	5
BUCKLEY STREET	<i>Angophora costata</i>	Smooth Barked Apple	G	54	5
BUNBURY STREET	<i>Ulmus procera</i>	Golden Elm	H	16	6
BYRON STREET	<i>Eucalyptus leucoxylon</i> 'Rosea'	Yellow Gum (Leeds to Moore)	C	17	3
	(Leeds St to Moore St)				
	<i>Lauris nobilis</i> (Leeds St to Nicholson St)	Bay Laurel (Leeds to Nicholson)			
	<i>Ulmus parvifolia</i> (Moore St to Cowper St)	Chinese Elm (Moore to Cowper)			
CARMODY WAY	<i>Ficus platypoda</i>	Rock Fig	H	3	7
CATHERINE STREET	<i>Lagerstroemia indica</i>	Crepe Myrtle	H	2	7
CENTRAL AVENUE	<i>Callistemon viminalis</i>	Weeping Bottlebrush	J	0	10
CHATHAM STREET	<i>Koelreuteria paniculata</i>	Golden Rain Tree	H	8	7
COMMERCIAL ROAD	<i>Ulmus parvifolia</i>	Chinese Elm	J	4	10
CORAL AVENUE	<i>Pyrus usseriensis</i> 'Capital'	Ornamental Pear	J	0	10
COWARD STREET	Confirmation Pending		J	10	10
COWPER STREET	<i>Angophora costata</i> (Parker St to Harris St)	Smooth Barked Apple (Parker to Harris)	I	47	6
	<i>Ficus macrophylla</i> (Parker St to Hopkins St)	Moreton Bay Fig (Parker to Hopkins)			
CRESWICK STREET	<i>Malus ioensis</i> 'Plena'	Bechtels Crab Apple	G	46	4
CROSS STREET	<i>Ulmus parvifolia</i> 'Todd'	Chinese Elm	I	48	6
CROWN STREET	<i>Olea europaea</i> 'Sativa'	Olive	A	3	1
CUMBERLAND DRIVE	<i>Acer buergerianum</i>	Trident Maple	J	5	10
DALMAHOY STREET	Confirmation Pending		J	8	10
DARLING STREET	<i>Callistemon viminalis</i>	Weeping Bottlebrush	J	0	10
DAVID STREET	Confirmation Pending		I	7	8
DAWSON AVENUE	<i>Tristanopsis laurina</i>	Water Gum	J	3	10
DEVON PLACE	Confirmation Pending		I	9	7
DONALD STREET (EAST)	<i>Ulmus parvifolia</i>	Chinese Elm	D	23	3
DONALD STREET (WEST)	<i>Ulmus parvifolia</i>	Chinese Elm	J	2	8
DROOP STREET	<i>Lauris nobilis</i> (Hopkins St to Donald St)	Bay Laurel (Hopkins to Donald)	J	5	10
	<i>Ulmus parvifolia</i> (Donald St to Ballarat Rd)	Chinese Elm (Donald to Ballarat)			
DUDLEY STREET	<i>Eucalyptus leucoxylon</i> 'Megalocarpa'	Yellow Gum	J	5	10
EDEN STREET	<i>Callistemon salignus</i>	Willow Bottlebrush	I	5	7
ELDRIDGE STREET	<i>Lophostemon confertus</i>	Brush Box	I	10	8
ELEANOR STREET	<i>Koelreuteria paniculata</i>	Golden Rain Tree	G	28	2
EMPIRE STREET	<i>Lophostemon confertus</i>	Brush Box	G	14	5
ERROL STREET	<i>Eucalyptus leucoxylon</i> 'Rosea'	Yellow Gum	J	0	10
ESSEX STREET	<i>Koelreuteria paniculata</i>	Golden Rain Tree	J	22	8
EVERARD STREET	<i>Pyrus calleryana</i> 'Chanticleer'	Chanticleer Pear	C	28	1
FARNSWORTH AVENUE	<i>Angophora costata</i>	Smooth Barked Apple	D	152	2
FEDERAL STREET	<i>Olea euopaea</i>	Olive	J	0	10
FERN TERRACE	<i>Lophostemon confertus</i>	Brush Box	J	0	10
FISHER STREET	<i>Corymbia ficifolia</i>	Red Flowering Gum	J	0	10
FITZROY STREET	<i>Koelreuteria paniculata</i>	Golden Rain Tree	J	0	10
FOOTSCRAY ROAD	Confirmation Pending		I	8	8
FORD STREET	<i>Ulmus parvifolia</i>	Chinese Elm	A	8	2
FRENCH STREET	<i>Laurus nobilis</i>	Bay Laurel	F	12	3
GALLANT STREET	<i>Acer buergerianum</i>	Trident Maple	J	1	10
GEE LONG ROAD	<i>Corymbia maculata</i>	Spotted Gum	J	43	8
GORDON STREET	<i>Lagerstroemia indica</i>	Crepe Myrtle	I	72	5
GOVAN COURT	<i>Malus ioensis</i> 'Plena'	Bechtels Crab Apple	J	0	10
GOVAN STREET	<i>Ulmus parvifolia</i>	Chinese Elm	J	0	10



Street Name	Tree Species	Common Name	Priority Ranking	No. of Trees	Year to be Planted
GREENHAM PLACE	<i>Lophostemon confertus</i>	Brush Box	J	0	10
GREER STREET	<i>Ulmus parvifolia</i>	Chinese Elm	J	4	10
HARRIS STREET	<i>Lophostemon confertus</i>	Brush Box	J	0	10
HERBERT STREET	<i>Lagerstroemia indica</i>	Crepe Myrtle	E	12	7
HEWITT AVENUE	<i>Ulmus parvifolia</i> 'Todd'	Chinese Elm	G	8	6
HOADLEY COURT	<i>Acer x freemanii</i> 'Autumn Blaze'	Red Maple	A	4	1
HOCKING STREET	<i>Eucalyptus leucoxylon</i> 'Euky Dwarf'	Yellow Gum	C	34	1
HOPKINS STREET	<i>Acer platanoides</i> 'Columnare'	Column Norway Maple	D	3	2
HUGH STREET	<i>Lagerstroemia indica</i>	Crepe Myrtle	A	6	9
HUNTLY STREET	<i>Pyrus calleryana</i> 'Chanticleer'	Chanticleer Pear	J	8	10
HYDE STREET	<i>Ulmus parvifolia</i> ( North of Napier Street) <i>Tristanopsis laurina</i> (South of Napier Street)	Chinese Elm Water Gum	I	43	6
IRVING STREET	<i>Backhousia citriodora</i>	Lemon Myrtle	F	17	3
JAMIESON AVENUE	<i>Eucalyptus leucoxylon</i> 'Megalocarpa'	Yellow Gum	G	9	5
JERROLD STREET	<i>Tristanopsis laurina</i>	Water Gum	I	11	2
JOHN STREET	<i>Callestemon viminalis</i>	Drooping Bottlebrush	J	0	10
JOHNSON STREET	<i>Lagerstroemia indica</i>	Crepe Myrtle	J	1	10
JOSEPH ROAD	Confirmation Pending		J	0	10
KINNEAR STREET	<i>Tristanopsis laurina</i>	Water Gum	D	21	1
LATROBE STREET	<i>Malus ioensis</i> 'Plena'	Bechtels Crab Apple	I	6	7
LAWSON PLACE	<i>Melia azederach</i>	White Cedar	B	9	2
LEANDER STREET	<i>Eucalyptus leucoxylon</i> 'Megalocarpa'	Yellow Gum	J	1	10
LEEDS STREET	<i>Laurus nobilis</i>	Bay Laurel	G	26	2
LEIGH STREET	<i>Lophostemon confertus</i>	Brush Box	J	0	10
LEUNIG PLACE	<i>Ulmus parvifolia</i>	Chinese Elm	J	0	10
LINDA COURT	<i>Melia azederach</i>	White Cedar	G	3	7
LIVERPOOL STREET	<i>Eucalyptus leucoxylon</i> 'Megalocarpa' (West) <i>Koelreuteria paniculata</i> (East)	Yellow Gum (West) Golden Rain Tree (East)	G	13	6
LYNCH STREET	<i>Eucalyptus leucoxylon</i> 'Rosea' (Nicholson St to Moore St)	Yellow Gum	G	26	5
MACPHERSON STREET	<i>Olea europaea</i> 'Sativa'	Olive	I	19	7
MADDOCK STREET	<i>Acer buergerianum</i>	Trident Maple	I	8	7
MALDEN STREET	<i>Olea europaea</i> 'Sativa'	Olive	J	1	10
MARIBYRNONG BOULEVARD	Confirmation Pending		A	23	2
MARIBYRNONG STREET	<i>Eucalyptus melliodora</i>	Yellow Box	G	43	4
MARION STREET	<i>Melia azederach</i>	White Cedar	I	2	8
MARY STREET	<i>Lagerstroemia indica</i>	Crepe Myrtle	G	5	9
MAVIS STREET	<i>Pyrus calleryana</i> 'Chanticleer'	Chanticleer Pear	D	10	1
MAY STREET	<i>Eucalyptus leucoxylon</i>	Yellow Gum	J	2	10
MCCUBBIN STREET	<i>Acacia podalyrifolia</i>	Queensland Silver Wattle	J	3	10
MCDUGALL DRIVE	<i>Angophora costata</i> (East of Hewitt Ave) <i>Ulmus parvifolia</i> 'Todd' (West of Hewitt)	Smooth Barked Apple (East of Hewitt) Chinese Elm (West of Hewitt)	H	24	5
MCNAB AVENUE	<i>Phoenix canariensis</i>	Canary Island Date Palm	J	0	10
MEPHAN STREET	<i>Tristanopsis laurina</i>	Water Gum	G	45	1
MILLS CLOSE	Confirmation Pending		J	0	10
MOORE STREET	<i>Eucalyptus nicholii</i>	Narrow Leaf Peppermint	D	45	2
MORELAND STREET	<i>Quercus robur</i>	English Oak	F	64	3
MUNRO SQUARE	<i>Jacaranda mimosifolia</i>	Jacaranda	J	0	10
NAISMITH STREET	<i>Melia azederach</i>	White Cedar	J	2	10
NAPIER STREET	<i>Pyrus calleryana</i> 'Chanticleer'	Chanticleer Pear	J	10	10
NEILSON PLACE	Confirmation Pending		I	18	9
NEWELL STREET	<i>Agonis flexuosa</i>	Willow Myrtle	J	10	10
NEWMAN DRIVE	<i>Pyrus calleryana</i> 'Capital'	Ornamental Pear	F	0	10
NICHOLSON STREET	<i>Corymbia maculata</i>	Spotted Gum	J	17	9
OWEN STREET	<i>Tristanopsis laurina</i>	Water Gum	J	7	10
PAISLEY STREET	<i>Pyrus calleryana</i> 'Bradford' (East of French St) <i>Ulmus parvifolia</i> (West of French St)	Bradford Pear (East of French Street) Chinese Elm (West of French Street)	H	28	5
PALMER STREET	<i>Celtis australis</i>	Hackberry	J	4	10
PARK STREET	<i>Koelreuteria paniculata</i>	Golden Rain Tree	J	4	10
PARKER STREET	<i>Melia azederach</i>	White Cedar	J	0	10
PETER STREET	<i>Olea europaea</i>	Olive	A	6	3
PICKETT STREET	<i>Eucalyptus leucoxylon</i> megalocarpa	Yellow Gum	H	17	6
PILGRIM STREET	<i>Pyrus ussuriensis</i>	Manchurian Pear	J	0	10
QUEEN STREET	<i>Corymbia ficifolia</i>	Red Flowering Gum	A	9	6
RAILWAY PLACE	<i>Lagerstroemia indica</i> 'Tuskarora'	Crepe Myrtle	C	13	1
RALEIGH STREET	<i>Eucalyptus nicholii</i> (South) <i>Lophostemon confertus</i> (North)	Narrow Leaf Peppermint (South) Brush Box (South)	I	6	8
RAYNER STREET	<i>Pyrus calleryana</i> 'Chanticleer'	Chanticleer Pear	I	2	7
RIPPON STREET	<i>Lagerstroemia indica</i>	Crepe Myrtle	J	3	10
ROBINSON ROAD	<i>Tristanopsis laurina</i>	Water Gum	I	3	8
ROSAMOND ROAD	<i>Pyrus ussuriensis</i>	Manchurian Pear	J	39	8
RYAN STREET	<i>Fraxinus griffithii</i>	Evergreen Ash	I	14	7
SALTRIVER PLACE	<i>Lophostemon confertus</i>	Brush Box	A	14	3
SECOMB PLACE N	<i>Ulmus parvifolia</i>	Chinese Elm	J	0	10

Street Name	Tree Species	Common Name	Priority Ranking	No. of Trees	Year to be Planted
SECOMB PLACE S	<i>Ulmus parvifolia</i>	Chinese Elm	J	0	10
SHELLEY STREET	<i>Callistemon salignus</i>	Willow Bottlebrush	A	3	6
SHEPHERD STREET	<i>Acer buergerianum</i>	Trident Maple	F	46	4
SMITH CRESCENT	<i>Pyrus ussuriensis</i>	Manchurian Pear	J	3	10
SOMERVILLE ROAD	<i>Angophora costata</i>	Smooth Barked Apple	J	0	10
SOUTER CRESCENT	<i>Acer campestre</i> 'Evelyn' Queen Elizabeth	Hedge Maple	J	26	8
SOUTHAMPTON STREET	<i>Pyrus calleryana</i> 'Bradford'	Bradford Pear	J	0	10
STAFFORD STREET	<i>Ulmus parvifolia</i>	Chinese Elm	J	0	10
STANLAKE STREET	<i>Olea europaea</i> 'Sativa'	Olive	J	1	10
STEET STREET	<i>Agonis flexuosa</i>	Willow Myrtle	J	5	10
STIRLING STREET	<i>Melia azederach</i>	White Cedar	H	26	5
SUMMERHILL ROAD	<i>Pyrus calleryana</i> 'Chanticleer'	Chanticleer Pear	J	10	10
SWABY SQUARE	<i>Fraxinus griffithii</i>	Evergreen Ash	I	3	8
SWAN STREET	<i>Pyrus calleryana</i> 'Bradford'	Bradford Pear	J	3	10
SYDNEY STREET	<i>Eucalyptus leucoxylon</i> 'Megalocarpa'	Yellow Gum	J	0	10
TAIT STREET	<i>Eucalyptus leucoxylon</i> 'Megalocarpa'	Yellow Gum	H	5	6
TALBOT STREET	<i>Pyrus ussuriensis</i>	Manchurian Pear	H	9	6
THE CRESCENT	<i>Acer buergerianum</i>	Trident Maple	J	0	10
TIERNAN STREET	<i>Acer buergerianum</i>	Trident Maple	E	4	5
TOOHEY STREET	<i>Callistemon viminalis</i>	Weeping Bottlebrush	C	10	3
VICTORIA STREET	<i>Ulmus parvifolia</i>	Chinese Elm	J	9	10
VIPONT STREET	<i>Corymbia citriodora</i>	Lemon Scented Gum	J	1	10
WARDE STREET	<i>Eucalyptus leucoxylon</i> 'Megalocarpa'	Yellow Gum	A	10	3
WARLEIGH ROAD	<i>Fraxinus angustifolia</i>	Desert Ash	J	0	10
WHITE STREET	<i>Lagerstroemia indica</i>	Crepe Myrtle	J	5	10
WHITEHALL STREET	<i>Melia azederach</i> (Nature strip) <i>Eucalyptus camaldulensis</i> (Median)	White Cedar River Red Gum	H	98	3
WIGHTMAN STREET	<i>Callistemon viminalis</i>	Weeping Bottlebrush	A	8	3
WINDSOR STREET	<i>Lagerstroemia indica</i>	Crepe Myrtle	J	5	10
WINGFIELD STREET	<i>Olea europaea</i> 'Sativa'	Olive	I	12	7
WOLVERHAMPTON STREET	<i>Agonis flexuosa</i>	Willow Myrtle	H	20	6
YEWERS STREET	<i>Agonis flexuosa</i>	Willow Myrtle	C	21	9
YOUELL STREET	<i>Eucalyptus leucoxylon</i> 'Megalocarpa' (South) <i>Eucalyptus sideroxylon</i> (North)	Yellow Gum (South) Red Ironbark (North)	F	14	3



## Kingsville

For each street, this list displays the nominated tree species, priority ranking, approximate number of new trees required and year of the 10 Year Planting Program to be planted.

Street Name	Tree Species	Common Name	Priority Ranking	No. of Trees	Year to be Planted
ALBION STREET	<i>Melia azederach</i>	White Cedar	I	12	7
BISHOP STREET	<i>Ulmus parvifolia</i>	Chinese Elm	J	10	10
CHATFIELD STREET	<i>Olea europaea 'Sativa'</i>	Olive	H	22	5
CHIRNSIDE STREET	<i>Lagerstroemia indica</i>	Crepe Myrtle	J	19	9
CORONATION STREET	<i>Lophostemon confertus</i>	Brush Box	J	15	8
DICKSON STREET	<i>Pyrus calleryana 'Chanticleer'</i>	Chanticleer Pear	J	0	10
EDGAR STREET	<i>Agonis flexuosa</i>	Willow Myrtle	J	12	9
EMPRESS AVENUE	<i>Tristaniaopsis laurina</i>	Water Gum	J	13	9
GEELONG ROAD	<i>Corymbia maculata</i>	Spotted Gum	J	43	8
GEELONG STREET	<i>Pyrus calleryana 'Chanticleer'</i>	Chanticleer Pear	J	6	10
KERR STREET	<i>Lophostemon confertus</i>	Brush Box	H	5	6
KINGSVILLE STREET	<i>Agonis flexuosa</i>	Willow Myrtle	I	21	7
LEWIS STREET	<i>Lophostemon confertus</i>	Brush Box	F	18	3
OSCAR STREET	<i>Lagerstroemia indica</i>	Crepe Myrtle	J	1	10
QUEENSVILLE STREET	<i>Pyrus calleryana 'Chanticleer'</i>	Chanticleer Pear	J	14	9
SHACKELL STREET	Confirmation Pending		A	18	6
SOMERVILLE ROAD	<i>Angophora costata</i>	Smooth Barked Apple	J	11	9
STURT STREET	<i>Callistemon viminalis</i>	Weeping Bottlebrush	J	0	10
TUPPEN STREET	<i>Melia azederach</i>	White Cedar	J	0	10
WALES STREET	<i>Koelreuteria paniculata</i>	Golden Rain Tree	J	15	9
WEBB STREET	<i>Pyrus calleryana 'Chanticleer'</i>	Chanticleer Pear	H	13	6
WILLIAMSTOWN ROAD	<i>Lophostemon confertus</i>	Brush Box	J	25	8

## Maidstone

For each street, this list displays the nominated tree species, priority ranking, approximate number of new trees required and year of the 10 Year Planting Program to be planted.

Street Name	Tree Species	Common Name	Priority Ranking	No. of Trees	Year to be Planted
ALBERT FACEY STREET	<i>Angophora costata</i>	Smooth Barked Apple	F	27	2
ALMA STREET	<i>Melia azederach</i>	White Cedar	J	12	9
ASHLEY STREET	<i>Pyrus ussuriensis</i>	Manchurian Pear	I	51	6
BABB STREET	<i>Melia azederach</i>	White Cedar	J	2	10
BAIRD STREET	<i>Angophora costata</i>	Smooth Barked Apple	J	4	10
BALLARAT ROAD	<i>Ulmus parvifolia</i>	Chinese Elm	J	89	7
BARRETT STREET	<i>Angophora costata</i>	Smooth Barked Apple	J	1	10
BERNARD STREET	<i>Malus ioensis</i> 'Plena'	Bechtels Crab Apple	I	3	8
BOSQUET STREET	<i>Malus ioensis</i> 'Plena'	Bechtels Crab Apple	I	8	8
BURNS STREET	<i>Malus ioensis</i> 'Plena'	Bechtels Crab Apple	J	11	9
CAMBRIDGE STREET	<i>Agonis flexuosa</i>	Willow Myrtle	F	13	3
CARLYLE STREET	<i>Angophora costata</i>	Smooth Barked Apple	J	7	10
CATHCART STREET	<i>Malus ioensis</i> 'Plena'	Bechtels Crab Apple	J	3	10
CHEWTON STREET	<i>Corymbia maculata</i>	Spotted Gum	G	10	4
CHURCH STREET	<i>Olea europaea</i> 'Sativa'	Olive	J	8	10
CHURCHILL AVENUE	<i>Corymbia citriodora</i>	Lemon Scented Gum	J	39	8
CHURCHILL PLACE	<i>Callistemon viminalis</i>	Weeping Bottlebrush	C	8	1
CLARENDON STREET	<i>Olea europaea</i> 'Sativa'	Olive	H	12	6
COLEMAN COURT	<i>Angophora costata</i>	Smooth Barked Apple	J	1	10
COLEMAN STREET	<i>Eucalyptus leucoxylon</i> 'Megalocarpa'	Yellow Gum	D	14	1
COMMERCIAL STREET	<i>Tristaniopsis laurina</i>	Water Gum	I	4	8
CORREA VIEW	<i>Pyrus calleryana</i> 'Chanticleer'	Chanticleer Pear	J	1	10
CREFDEN STREET	<i>Eucalyptus leucoxylon</i>	Yellow Gum	G	14	4
CURTIN COURT	<i>Lophostemon confertus</i>	Brush Box	C	5	1
CURTIN STREET	<i>Lophostemon confertus</i>	Brush Box	H	15	6
DEAKIN STREET	<i>Melia azederach</i>	White Cedar	I	16	7
DELACEY STREET	<i>Tristaniopsis laurina</i>	Water Gum	J	0	10
DESMOND STREET	<i>Pyrus ussuriensis</i>	Manchurian Pear	J	1	10
DUNEDIN STREET	<i>Callistemon viminalis</i>	Weeping Bottlebrush	J	5	10
EDMUND STREET	<i>Lophostemon confertus</i>	Brush Box	H	6	5
EMU ROAD	<i>Angophora costata</i>	Smooth Barked Apple	J	5	10
EUCALYPTUS DRIVE	<i>Eucalyptus sideroxylon</i> 'Rosea'	Red Ironbark	I	12	7
EVANS STREET	<i>Eucalyptus leucoxylon</i> 'Megalocarpa'	Yellow Gum	J	3	10
FISHER STREET	<i>Corymbia ficifolia</i>	Red Flowering Gum	H	22	5
FOREMAN WAY	<i>Ulmus parvifolia</i>	Chinese Elm	J	0	10
GEORGE STREET	<i>Callistemon viminalis</i>	Weeping Bottlebrush	C	18	5
GIBB STREET	<i>Lophostemon confertus</i>	Brush Box	J	1	10
GILDA STREET	<i>Ulmus parvifolia</i>	Chinese Elm	F	7	3
GREENHAM STREET	<i>Lophostemon confertus</i>	Brush Box	D	30	1
GREVILLEA CIRCUIT	<i>Pyrus betulaefolia</i> 'Dancer'	Ornamental Pear	J	2	10
HALSTEAD STREET	<i>Lophostemon confertus</i>	Brush Box	G	4	4
HAMPSTEAD ROAD	<i>Ulmus parvifolia</i>	Chinese Elm	D	105	2
HARRY STREET	<i>Lophostemon confertus</i> (East)	Brush Box (East)	I	6	8
	<i>Tristaniopsis laurina</i> (West)	Water Gum (West)			
HAVELOCK STREET	<i>Lophostemon confertus</i>	Brush Box	J	2	10
HOLLAND COURT	<i>Ulmus parvifolia</i>	Chinese Elm	I	7	8
HOWARD STREET	<i>Corymbia ficifolia</i> (South)	Red Flowering Gum (South)	G	27	2
	<i>Euc. Leucoxylon</i> 'Megalocarpa' (North)	Yellow Gum (North)			
HUTTON STREET	<i>Lophostemon confertus</i>	Brush Box	I	4	8
INKERMAN STREET	<i>Melia azederach</i>	White Cedar	J	1	10
IRVING COURT	<i>Corymbia citriodora</i>	Lemon Scented Gum	I	1	7
JACKSON STREET	<i>Agonis flexuosa</i>	Willow Myrtle	F	26	4
JANSON STREET	<i>Angophora costata</i>	Smooth Barked Apple	J	4	10
KANOOKA DRIVE	<i>Angophora costata</i>	Smooth Barked Apple	J	1	10
KEITH STREET	<i>Eucalyptus leucoxylon</i>	Yellow Gum	E	10	10
LAUREL COURT	<i>Olea europaea</i> 'Sativa'	Olive	J	3	10
LIGHTWOOD WAY	<i>Eucalyptus sideroxylon</i>	Red Iron Bark	J	0	10
LINDENOW STREET	<i>Melia azederach</i>	White Cedar	H	21	6
LOMANDRA DRIVE	<i>Angophora costata</i> (West)	Smooth Barked Apple (West)	J	3	10
	<i>Eucalyptus scoparia</i> (East)	Wallangara White Gum (East)			
LOMAS WAY	<i>Ulmus parvifolia</i> (North)	Chinese Elm (North)	J	0	10
	<i>Angophora costata</i> (South)	Smooth Barked Apple (South)			
LYONS STREET	<i>Malus ioensis</i> 'Plena'	Bechtels Crab Apple	J	2	10
MADDEN STREET	<i>Lophostemon confertus</i> (South)	Brush Box (South)	I	24	7
	<i>Tristaniopsis laurina</i> (North)	Water Gum (North)			
MANDRELL STREET	Confirmation Pending		J	0	10

Street Name	Tree Species	Common Name	Priority Ranking	No. of Trees	Year to be Planted
MAPLE STREET	<i>Acer x freemannii</i> 'Autumn Blaze'	Norway Maple	J	2	10
MARSH STREET	<i>Lagerstoemia indica</i>	Crepe Myrtle	J	7	10
MITCHELL STREET	<i>Melia azederach</i>	White Cedar	J	36	8
MONTGOMERY STREET	<i>Callistemon salignus</i>	Willow Myrtle	F	20	3
MYRTLE DRIVE	<i>Eucalyptus leucoxylon</i> (North Southside) <i>Angophora costata</i> (West) <i>Callistemon viminalis</i> 'Harkness' (North Northside) <i>Eucalyptus scoparia</i> (East)	Yellow Gum Smooth Barked Apple Weeping Bottlebrush Wallangara White Gum	J	11	9
NORFOLK STREET	<i>Pyrus usseriensis</i>	Manchurian Pear	I	30	7
OMAR STREET	<i>Melia azederach</i>	White Cedar	J	13	9
POWELL CRESCENT	<i>Angophora costata</i>	Smooth Barked Apple	E	11	2
PULLAR STREET	<i>Ulmus parvifolia</i>	Chinese Elm	J	0	10
RADIO STREET	<i>Malus ioensis</i> 'Plena'	Bechtels Crab Apple	I	12	7
RAGLAN COURT	<i>Tristaniopsis laurina</i>	Water Gum	J	2	10
RAGLAN STREET	<i>Pyrus usseriensis</i>	Manchurian Pear	H	9	6
RENOWN STREET	<i>Malus ioensis</i> 'Plena'	Bechtels Crab Apple	J	0	10
RICHARDS STREET	<i>Lophostemon confertus</i>	Brush Box	I	17	7
RICHELIEU STREET	<i>Pyrus usseriensis</i>	Manchurian Pear	J	12	9
RINGTAIL CIRCUIT	<i>Angophora costata</i>	Smooth Barked Apple	J	1	10
ROONEY STREET	<i>Lophostemon confertus</i>	Brush Box	I	8	8
ROSAMOND ROAD	<i>Pyrus usseriensis</i>	Manchurian Pear	J	57	7
SCOVELL CRESCENT	<i>Lophostemon confertus</i>	Brush Box	G	24	3
SCULLIN STREET	<i>Tristaniopsis laurina</i>	Water Gum	G	6	4
SHORT STREET	<i>Agonis flexuosa</i>	Willow Myrtle	J	1	10
SILVER WATTLE AVENUE	<i>Agonis flexuosa</i>	Willow Myrtle	I	4	8
SMITH STREET	<i>Melia azederach</i>	White Cedar	J	6	10
SONLEY STREET	<i>Malus ioensis</i> 'Plena'	Bechtels Crab Apple	F	8	3
SPURLING STREET	<i>Malus ioensis</i> 'Plena'	Bechtels Crab Apple	J	7	10
STUDLEY STREET	<i>Melia azederach</i>	White Cedar	F	29	2
SUFFOLK STREET	<i>Eucalyptus leucoxylon</i> 'Megalocarpa'	Yellow Gum	J	28	8
SUMMERHILL ROAD	<i>Pyrus calleryana</i> 'Chanticleer'	Chanticleer Pear	J	10	10
THOMSON STREET	<i>Angophora costata</i>	Smooth Barked Apple	H	30	5
ULMARA PARKWAY	<i>Angophora costata</i>	Smooth Barked Apple	J	0	10
VERDUN STREET	<i>Olea europaea</i>	Olive	J	0	10
WALLACE STREET	<i>Tristaniopsis laurina</i>	Water Gum	J	5	10
WATTLE ROAD	<i>Eucalyptus sideroxylon</i>	Red Ironbark	F	60	1
WHITTAKER STREET	<i>Tristaniopsis laurina</i>	Water Gum	J	5	9
WILLIAMSON ROAD	<i>Ulmus parvifolium</i>	Chinese Elm	I	28	7
WINSTON STREET	<i>Pyrus usseriensis</i>	Manchurian Pear	I	6	8
WIRILDA WAY	<i>Ulmus parvifolium</i>	Chinese Elm	I	4	8
YARDLEY COURT	<i>Malus ioensis</i> 'Plena'	Bechtels Crab Apple	J	0	10
YARDLEY STREET	<i>Lophostemon confertus</i>	Brush Box	J	8	10
YELLOW BOX STREET	<i>Angophora costata</i>	Smooth Barked Apple	J	3	10



## Maribyrnong

For each street, this list displays the nominated tree species, priority ranking, approximate number of new trees required and year of the 10 Year Planting Program to be planted.

Street Name	Tree Species	Common Name	Priority Ranking	No. of Trees	Year to be Planted
ADORI PLACE	<i>Melia azederach</i>	White Cedar	F	5	4
ALAMEDA AVENUE	<i>Melia azederach</i>	White Cedar	J	4	10
ALLARA AVENUE	<i>Melia azederach</i>	White Cedar	F	11	3
AMARCO CRESCENT	<i>Melia azederach</i>	White Cedar	J	1	10
ANGLER LANE	<i>Acer buergerianum</i>	Trident Maple	J	0	10
ANGLERS WAY	<i>Eucalyptus melliodora</i>	Yellow Box	A	9	1
AQUATIC DRIVE	<i>Angophora costata</i>	Smooth Barked Apple	H	9	6
BARB STREET	<i>Eucalyptus leucoxylon</i> 'Rosea'	Yellow Gum	E	2	9
BELLEVUE COURT	<i>Melia azederach</i>	White Cedar	J	2	10
BELVEDERE CLOSE	<i>Acer buergerianum</i>	Trident Maple	J	2	10
BIRDWOOD ROAD	<i>Waterhousia floribunda</i>	Weeping Lillypilly	H	6	7
BIRDWOOD STREET	<i>Waterhousia floribunda</i>	Weeping Lillypilly	J	7	10
BLAIR STREET	<i>Quercus rubra</i>	Red Oak	G	24	1
BLOOMFIELD AVENUE	<i>Brachychiton populenis</i>	Kurrajong	I	17	7
BRACKEN AVENUE	<i>Eucalyptus melliodora</i>	Yellow Box	I	8	8
BREAM STREET	<i>Tristanopsis laurina</i>	Water Gum	J	0	10
BURTON CRESCENT	<i>Callistemon salignus</i>	Willow Bottlebrush	E	17	2
CASE STREET	<i>Ulmus parvifolia</i>	Chinese Elm	I	3	8
CASTLE VIEW	<i>Callistemon salignus</i>	Willow Bottlebrush	I	2	8
CASUARINA CLOSE	<i>Eucalyptus leucoxylon</i> 'Rosea'	Yellow Gum	J	0	10
CAULSON CLOSE	<i>Eucalyptus leucoxylon</i>	Yellow Gum	E	9	10
CEDAR DRIVE	<i>Melia azederach</i>	White Cedar	J	0	10
CENTRAL PARK AVENUE	<i>Eucalyptus leucoxylon</i> 'Rosea'	Yellow Gum	J	1	10
	<i>Pyrus ussuriensis</i>	Manchurian Pear			
CHICAGO STREET	<i>Lophostemon confertus</i>	Brush Box	H	20	6
CHIFLEY DRIVE	<i>Phoenix canariensis</i> (Anglers Way to The Esplanade)	Canary Island Date Palm	H	36	4
CITY VIEW DRIVE	<i>Acacia implexa</i>	Lightwood	J	2	10
CLYDE STREET	<i>Melia azederach</i>	White Cedar	H	17	6
COMO PARADE	<i>Pyrus ussuriensis</i>	Manchurian Pear	F	10	3
CORDITE AVENUE	<i>Lophostemon confertus</i>	Brush Box	J	2	10
CORMORANT PLACE	<i>Magnolia grandiflora</i>	Magnolia	J	0	10
CUMBERLAND DRIVE	<i>Acer buergerianum</i>	Trident Maple	J	7	10
CYPRESS WAY	<i>Tristanopsis laurina</i>	Water Gum	H	10	6
DALE STREET	<i>Corymbia ficifolia</i>	Red Flowering Gum	I	16	7
DANTHONIA LANE	<i>Pyrus calleryana</i>	Callery Pear	J	0	10
DUFFY STREET	<i>Corymbia ficifolia</i>	Red Flowering Gum	H	8	7
DUNLOP STREET	<i>Ulmus parvifolia</i>	Chinese Elm	J	0	10
EDGEWATER BOULEVARD	<i>Angophora costata</i> (Gordon St to Magazine Way) <i>Melia azederach</i> (Magazine Way to Bracken Ave)	Smooth Barked Apple White Cedar	J	9	10
ENDEAVOUR DRIVE	<i>Eucalyptus leucoxylon</i> 'Rosea'	Yellow Gum	J	5	10
ENSIGN STREET	<i>Corymbia ficifolia</i>	Red Flowering Gum	J	0	10
EVELINE AVENUE	<i>Eucalyptus scoparia</i>	Wallangara White Gum	I	7	8
EXAMINER STREET	<i>Malus ioensis</i>	Iowa Crab Apple	J	0	10
FABIAN COURT	<i>Tristanopsis laurina</i>	Water Gum	J	0	10
FERGUSON STREET	<i>Lagerstroemia indica</i>	Crepe Myrtle	J	2	10
FLEMMING AVENUE	<i>Tristanopsis laurina</i>	Water Gum	J	1	10
FORGE CLOSE	<i>Pyrus calleryana</i>	Callery Pear	J	0	10
FRANGIPANI LANE	Confirmation Pending		J	0	10
GORDON STREET	<i>Lagerstroemia indica</i>	Crepe Myrtle	F	123	3
GRANDVIEW AVENUE	<i>Corymbia ficifolia</i>	Red Flowering Gum	I	7	8
HARBOUR LANE	<i>Pyrus calleryana</i>	Callery Pear	J	0	10
HIGH COURT	<i>Eucalyptus leucoxylon</i> 'Megalocarpa'	Yellow Gum	J	0	10
HILLSDALE AVENUE	<i>Eucalyptus melliodora</i>	Yellow Box	J	8	10
HILLSIDE CRESCENT	<i>Eucalyptus leucoxylon</i> 'Megalocarpa'	Yellow Gum	I	8	8
HORIZON DRIVE	<i>Pyrus Sp.</i> (Northside) <i>Acer Sp.</i> (Southside)	Ornamental Pear Maple	J	20	8
HORTENSE STREET	<i>Melia azederach</i>	White Cedar	F	0	10
IBIS PLACE	<i>Melia azederach</i>	White Cedar	J	1	10
IRONWORKERS LANE	<i>Pyrus calleryana</i> 'Capital'	Ornamental Pear	D	3	2
JACKS WAY	<i>Pyrus Sp.</i>	Ornamental Pear	J	0	10
JINDIVICK STREET	<i>Acacia implexa</i>	Lightwood	J	0	10
KALLARA GROVE	<i>Ulmus parvifolia</i>	Chinese Elm	I	12	7
KASOUKA AVENUE	<i>Brachychiton acerifolius</i>	Illawarra Flame Tree	H	11	6

Street Name	Tree Species	Common Name	Priority Ranking	No. of Trees	Year to be Planted
KELLAWAY STREET	<i>Pyrus usseriensis</i>	Manchurian Pear	J	4	10
KINGFISHER LANE	<i>Acer buergerianum</i>	Trident Maple	J	0	10
KYNOCH LANE	Confirmation Pending		J	0	10
LA SCALA AVENUE	<i>Lophostemon confertus</i>	Brush Box	E	31	5
LAKESIDE CRESCENT	<i>Melia azederach</i>	White Cedar	I	10	8
LANA WAY	<i>Lagerstoemia indica</i>	Crepe Myrtle	G	5	6
LEOPOLD STREET	<i>Acacia podalyriifolia</i>	Queensland Silver Wattle	F	15	3
LILARDIA AVENUE	<i>Eucalyptus melliodora</i>	Yellow Box	J	3	10
LONDREW COURT	<i>Melia azederach</i>	White Cedar	G	6	5
LYRIC STREET	<i>Tristanopsis laurina</i>	Water Gum	H	3	7
MACEDON STREET	<i>Eucalyptus leucoxylon</i> 'Megalocarpa'	Yellow Gum	I	15	7
MAGAZINE WAY	<i>Acer spp</i>	Maple	J	2	10
MAIREANA STREET	<i>Pyrus calleryana</i> 'Chanticleer'	Chanticleer Pear	J	0	10
MARY WALSH STREET	<i>Pyrus calleryana</i>	Callery Pear	J	1	10
MEPHAN STREET	<i>Tristanopsis laurina</i>	Water Gum	J	0	10
MERLYN STREET	<i>Malus ioensis</i> 'Plena'	Bechtel Crab Apple	J	1	10
METTERS STREET	<i>Lagerstoemia indica</i>	Crepe Myrtle	I	2	8
MIDDLE ROAD	<i>Corymbia ficifolia</i>	Red Flowering Gum	J	9	9
MITCHELL STREET	<i>Melia azederach</i>	White Cedar	J	1	10
MOLONEY LANE	Confirmation Pending		J	0	10
MONASH STREET	<i>Corymbia ficifolia</i>	Red Flowering Gum	I	9	8
MURIEL REIDY STREET	<i>Pyrus betulaefolia</i> 'Dancer'	Ornamental Pear	J	0	10
MURNONG STREET	<i>Melia azederach</i>	White Cedar	J	0	10
NAVIGATOR STREET	<i>Lophostemon confertus</i>	Brush Box	H	13	6
NAVY CLOSE	<i>Tristanopsis laurina</i>	Water Gum	J	2	10
NEWSTEAD STREET	<i>Lophostemon confertus</i>	Brush Box	J	3	10
OAKLAND STREET	<i>Melia azederach</i>	White Cedar	I	10	8
ORDNANCE RESERVE	<i>Brachychiton acerifolius</i>	Illawarra Flame Tree	I	7	8
OWEN STREET	<i>Lophostemon confertus</i>	Brush Box	J	1	10
PARADE SQUARE	Confirmation Pending		J	0	10
PARK DRIVE	<i>Acacia implexa</i>	Lightwood	G	14	4
PELICAN LANE	<i>Magnolia Grandiflora</i> 'Bull Bay'	Bull Bay Magnolia	J	0	10
PIER LANE	<i>Melia azederach</i>	White Cedar	J	1	10
PLANTATION STREET	<i>Callistemon viminalis</i>	Weeping Bottlebrush	H	7	7
PLATYPUS COURT	<i>Lophostemon confertus</i>	Brush Box	J	0	10
PRIDHAM STREET	<i>Lophostemon confertus</i>	Brush Box	J	7	10
PRIMARY PLACE	<i>Tristanopsis laurina</i>	Water Gum	H	3	7
PRINCE STREET	<i>Corymbia ficifolia</i>	Red Flowering Gum	H	9	6
RAFA COURT	<i>Eucalyptus leucoxylon</i> 'Megalocarpa'	Yellow Gum	A	0	10
RALEIGH ROAD	<i>Tristanopsis laurina</i>	Water Gum	B	117	1
RANDALL STREET	<i>Calodendron capense</i>	Cape Chestnut	I	10	7
RAVEN LANE	<i>Pyrus calleryana</i>	Callery Pear	J	0	10
REDGUM STREET	<i>Brachychiton acerifolius</i>	Illawarra Flame Tree	I	7	8
RIVER PARK TERRACE	<i>Eucalyptus leucoxylon</i> 'Megalocarpa'	Yellow Gum	J	0	10
RIVER STREET	<i>Acer buergerianum</i>	Trident Maple	J	0	10
RIVERBANK DRIVE	<i>Acer buergerianum</i>	Trident Maple	J	9	10
RIVERFRONT WAY	<i>Ulmus parvifolium</i>	Chinese Elm	J	0	10
RIVERVIEW COURT	<i>Pyrus usseriensis</i>	Manchurian Pear	J	0	10
ROSAMOND ROAD	<i>Eucalyptus leucoxylon</i> 'Megalocarpa'	Yellow Gum	H	68	8
ROWE STREET	<i>Eucalyptus leucoxylon</i> 'Megalocarpa'	Yellow Gum	J	4	10
SALTWATER CRESCENT	<i>Eucalyptus leucoxylon</i> 'Megalocarpa'	Yellow Gum	J	4	10
SAND PIPER GROVE	<i>Melia azederach</i>	White Cedar	J	3	10
SANDY PLACE	<i>Tristanopsis laurina</i>	Water Gum	G	8	4
SCENIC PLACE	<i>Angophora costata</i>	Smooth Barked Apple	J	2	10
	<i>Melia azederach</i>	White Cedar			
SEA RUSH STREET	<i>Melia azederach</i>	White Cedar	J	0	10
SHEARWATER CRESCENT	<i>Eucalyptus melliodora</i> (South)	Yellow Box (South)	J	1	10
	<i>Magnolia grandiflora</i>	Magnolia (North)			
SHEOAK LANE	<i>Acacia implexa</i>	Lightwood	F	2	5
SKYLINE DRIVE	<i>Eucalyptus melliodora</i>	Yellow Box	I	13	7
SLOANE STREET	<i>Lophostemon confertus</i>	Brush Box	H	8	7
SPEARGRASS STREET	<i>Acer buergerianum</i>	Trident Maple	H	5	7
STONEY RISE	<i>Acacia implexa</i>	Lightwood	C	5	1
SUMMIT RISE	<i>Acacia implexa</i>	Lightwood	J	0	10
SUNSET PLACE	<i>Ulmus parvifolia</i>	Chinese Elm	J	1	10
TAMUK STREET	<i>Acacia implexa</i>	Lightwood	H	18	6
TAYLOR AVENUE	<i>Pyrus calleryana</i>	Callery Pear	J	0	10
THE ESPLANADE	<i>Lophostemon confertus</i>	Brush Box	H	59	4
THOMAS HOLMES STREET	<i>Lophostemon confertus</i>	Brush Box	E	19	5
VALNERE STREET	<i>Agonis flexuosa</i>	Willow Myrtle	J	2	10
VAN NESS AVENUE	<i>Melia azederach</i>	White Cedar	D	82	1
VIEW GRAND ROAD	<i>Acer buergerianum</i>	Trident Maple	J	5	10
VILLAGE WAY	<i>Pyrus calleryana</i> 'Chanticleer'	Chanticleer Pear	J	0	10

Street Name	Tree Species	Common Name	Priority Ranking	No. of Trees	Year to be Planted
WAPITI STREET	<i>Melia azederach</i>	White Cedar	J	0	10
WARRS ROAD	<i>Angophora costata</i>	Smooth Barked Apple	H	27	5
WATERFORD AVENUE	<i>Pyrus calleryana</i> 'Chanticleer'	Chanticleer Pear	J	0	10
WATERSIDE PLACE	<i>Quercus robur</i>	English Oak	J	5	10
WESTS ROAD	<i>Ulmus parvifolia</i>	Chinese Elm	J	14	9
WHEELERS COURT	<i>Eucalyptus leucoxylon</i> 'Megalocarpa'	Yellow Gum	J	0	10
WHITE STREET	<i>Angophora costata</i>	Smooth Barked Apple	I	16	7
WILD CHERRY STREET	<i>Malus ioensis</i> 'Plena'	Bechtel Crab Apple	J	1	10
WILLIAM COOPER STREET	<i>Lophostemon confertus</i>	Brush Box	I	4	8
WILLIAMSON ROAD	<i>Ulmus parvifolia</i>	Chinese Elm	J	20	8
WOODRUFF AVENUE	<i>Acer buergerianum</i>	Trident Maple	J	7	10



## Seddon

For each street, this list displays the nominated tree species, priority ranking, approximate number of new trees required and year of the 10 Year Planting Program to be planted.

Street Name	Tree Species	Common Name	Priority Ranking	No. of Trees	Year to be Planted
ACTON STREET	<i>Hymenosporum flavum</i>	Native Frangipanni	C	8	2
ADMIRAL STREET	<i>Hymenosporum flavum</i>	Native Frangipanni	H	3	7
ALBERT STREET	<i>Melia azederach</i>	White Cedar	I	17	7
ALEXANDER STREET	<i>Hymenosporum flavum</i>	Native Frangipanni	I	6	8
ALFRED STREET	<i>Callistemon salignus</i> (East) <i>Pyrus calleryana</i> 'Chanticleer'	Willow Bottlebrush (East) Chanticleer Pear	J	0	10
ARRAN STREET	<i>Malus ioensis</i> 'Plena'	Bechtel Crap Apple	J	0	10
AUSTIN STREET	<i>Ulmus parvifolia</i>	Chinese Elm	J	9	10
BAYVIEW ROAD	<i>Ulmus parvifolia</i>	Chinese Elm	J	4	10
BELL STREET	<i>Eucalyptus leucoxylon</i> 'Megalocarpa'	Yellow Gum	J	0	10
BELLAIRS AVENUE	<i>Agonis flexuosa</i>	Willow Myrtle	J	8	10
BILSTON STREET	<i>Lagerstroemia indica</i> <i>Pyrus calleryana</i> 'Chanticleer'	Crepe Myrtle Chanticleer Pear	J	0	10
BOURKE STREET	<i>Callistemon viminalis</i>	Weeping Bottlebrush	A	14	3
BRISTOW STREET	<i>Corymbia maculata</i> (North) <i>Eucalyptus torquata</i> (South)	Spotted Gum (North) Coral Gum (South)	G	9	4
BROWNING STREET	<i>Callistemon viminalis</i>	Weeping Bottlebrush	J	5	10
BUCKLEY STREET	<i>Angophora costata</i>	Smooth Barked Apple	H	40	6
BUTE STREET	<i>Pyrus calleryana</i> 'Capital'	Ornamental Pear	J	0	10
CHAPMAN STREET	<i>Pyrus calleryana</i> 'Chanticleer'	Chanticleer Pear	J	0	10
CHARLES STREET	<i>Acer buergerianum</i> <i>Angophora costata</i> (Median) <i>Pyrus calleryana</i> 'Chanticleer' (Shopping Strip)	Trident Maple Smooth Barked Apple (Median) Chanticleer Pear (Shopping Strip)	J	11	9
COLLINS STREET	<i>Callistemon salignus</i>	Willow Bottlebrush	A	14	2
DANE STREET	<i>Eucalyptus leucoxylon</i> 'Megalocarpa'	Yellow Gum	J	0	10
EASTWOOD STREET	<i>Corymbia ficifolia</i>	Red Flowering Gum	A	1	3
EDWARD STREET	<i>Lagerstroemia indica</i>	Crepe Myrtle	J	0	10
EMMA STREET	<i>Callistemon salignus</i>	Willow Bottlebrush	J	0	10
FLORENCE STREET	<i>Hymenosporum flavum</i>	Native Frangipanni	H	3	7
GAMON STREET	<i>Pyrus ussuriensis</i>	Manchurian Pear	J	0	10
GEELONG ROAD	<i>Corymbia maculata</i>	Spotted Gum	J	5	10
GLEDHILL STREET	<i>Callistemon salignus</i>	Willow Bottlebrush	A	9	7
GREIG STREET	<i>Eucalyptus leucoxylon</i> 'Megalocarpa'	Yellow Gum	A	32	1
HAMILTON STREET	<i>Platanus orientalis</i>	Oriental Plane	J	1	10
HAROLD STREET	<i>Acer buergerianum</i>	Trident Maple	H	3	7
HARRIET STREET	<i>Callistemon citrinus</i>	Lemon Scented Bottlebrush	D	5	9
HENRY STREET	<i>Olea europaea</i> 'Picual'	Picual Olive	J	0	10
HOBBS STREET	<i>Melia azederach</i>	White Cedar	J	6	10
HOTHAM STREET	<i>Eucalyptus leucoxylon</i> 'Megalocarpa'	Yellow Gum	J	8	10
HYDE STREET	<i>Tristaniaopsis laurina</i>	Water Gum	J	20	8
JAMES STREET	<i>Callistemon viminalis</i>	Weeping Bottlebrush	J	4	10
JOHN STREET	<i>Eucalyptus leucoxylon</i> 'Megalocarpa'	Yellow Gum	D	19	2
JUNCTION STREET	<i>Lagerstroemia indica</i> 'Tuscarora'	Crepe Myrtle	J	0	10
KENT STREET	<i>Callistemon viminalis</i>	Weeping Bottlebrush	J	4	10
LAWRENCE STREET	<i>Pyrus calleryana</i> 'Chanticleer'	Chanticleer Pear	J	2	10
LYONS STREET	<i>Corymbia maculata</i>	Spotted Gum	J	0	10
MACKAY STREET	<i>Melia azederach</i>	White Cedar	J	0	10
MARGARET STREET	<i>Lagerstroemia indica</i>	Crepe Myrtle	J	0	10
MEDWAY STREET	<i>Lagerstroemia indica</i>	Crepe Myrtle	C	14	5
NICHOLSON STREET	<i>Eucalyptus leucoxylon</i> 'Megalocarpa'	Yellow Gum	J	17	9
NORTH STREET	<i>Callistemon viminalis</i>	Weeping Bottlebrush	A	15	5
OFARRELL STREET	<i>Callistemon viminalis</i> (South) <i>Corymbia ficifolia</i> (North)	Weeping Bottlebrush (South) Red Flowering Gum (North)	J	0	10
OSCAR STREET	<i>Lagerstroemia indica</i>	Crepe Myrtle	I	2	8
PENTLAND PARADE	<i>Eucalyptus leucoxylon</i> 'Megalocarpa'	Yellow Gum	J	25	8
PERRY STREET	<i>Olea europaea</i> 'Sativa'	Olive	J	0	10
PILGRIM STREET	<i>Pyrus ussuriensis</i>	Manchurian Pear	J	15	9
POLE STREET	<i>Lophostemon confertus</i>	Brush Box	J	5	10
PRINCESS STREET	<i>Olea europaea</i> 'Sativa'	Olive	J	0	10
RENNIE STREET	<i>Eucalyptus leucoxylon</i> 'Megalocarpa' (South) <i>Acacia implexa</i> (North)	Yellow Gum Willow Myrtle	J	0	10
SCOTT STREET	<i>Lophostemon confertus</i>	Brush Box	J	0	10
SEDDON STREET	<i>Pyrus calleryana</i> x <i>P. betulaefolia</i> 'Edgedell' Edgewood (Gamon St to Bayview St)	Ornamental Pear	J	0	10
SOUTH STREET	<i>Callistemon viminalis</i>	Weeping Bottlebrush	D	10	9
STAFF STREET	<i>Lagerstroemia indica</i>	Crepe Myrtle	J	0	10

Street Name	Tree Species	Common Name	Priority Ranking	No. of Trees	Year to be Planted
STATION ROAD	<i>Acer buergerianum</i>	Trident Maple	J	10	10
STEPHEN STREET	<i>Angophora costata</i>	Smooth Barked Apple	J	2	10
SYDENHAM STREET	<i>Pyrus calleryana</i> 'Chanticleer'	Chanticleer Pear	J	0	10
TENNYSON STREET	<i>Malus ioensis</i> 'Plena'	Bechtel Crab Apple	J	8	10
THOMSON STREET	<i>Lagerstroemia indica</i> 'Tuskarora' (North)	Crepe Myrtle (North)	J	5	10
	<i>Malus ioensis</i> 'Plena' (South)	Bechtel Crab Apple (South)			
VICTORIA STREET	<i>Pyrus calleryana</i> 'Chanticleer'	Chanticleer Pear	J	0	10
	<i>Angophora costata</i> (Centre Median)	Smooth Barked Apple			
VIGO STREET	<i>Lagerstroemia indica</i>	Crepe Myrtle	A	12	6
WALTER STREET	<i>Pyrus ussuriensis</i>	Manchurian Pear	J	6	10
WEBSTER STREET	<i>Pyrus calleryana</i> 'Chanticleer'	Chanticleer Pear	J	1	10
WERNER STREET	Confirmation Pending		A	9	6
WILLIAM STREET	<i>Ulmus parvifolia</i>	Chinese Elm	J	0	10
WILLIAMSTOWN ROAD	<i>Lophostemon confertus</i>	Brush Box	J	17	9
WINDSOR STREET	<i>Lagerstroemia indica</i>	Crepe Myrtle	G	27	4
YOUNG STREET	<i>Eucalyptus leucoxylon</i> 'Megalocarpa'	Yellow Gum	A	8	7

## Tottenham

For each street, this list displays the nominated tree species, priority ranking, approximate number of new trees required and year of the 10 Year Planting Program to be planted.

Street Name	Tree Species	Common Name	Priority Ranking	No. of Trees	Year to be Planted
ALICK ROAD	<i>Hymenosporum flavum</i>	Native Frangipanni	A	13	3
AMANDA ROAD	<i>Angophora costata</i>	Smooth Barked Apple	I	7	9
FREDERICK ROAD	<i>Corymbia ficifolia</i>	Red Flowering Gum	C	43	1
GEE LONG ROAD	<i>Corymbia maculata</i>	Spotted Gum	J	1	10
HOLMWOOD ROAD	<i>Angophora costata</i>	Smooth Barked Apple	A	37	1
JAMES COURT	<i>Eucalyptus forrestiana</i>	Fuschia Gum	F	10	3
JUSTIN ROAD	<i>Corymbia ficifolia</i>	Red Flowering Gum	I	8	9
KALINGRA ROAD	<i>Callistemon salignus</i>	Willow Bottlebrush	I	8	9
OLYMPIA STREET	<i>Callistemon viminalis</i>	Weeping Bottlebrush	G	28	4
PARAMOUNT ROAD	<i>Eucalyptus leucoxylon</i> 'Rosea'	Yellow Gum	G	25	4
QUARRY ROAD	<i>Fraxinus griffithii</i>	Evergreen Ash	G	24	9
RAVENSCOURT ROAD	<i>Agonis flexuosa</i>	Willow Myrtle	C	7	1
SARA GROVE	<i>Eucalyptus leucoxylon</i> 'Rosea'	Yellow Gum	A	29	1
SOMERVILLE ROAD	<i>Lagerstroemia indica</i>	Crepe Myrtle	J	31	8
SUNSHINE ROAD	<i>Angophora costata</i>	Smooth Barked Apple	J	19	9
TOTTENHAM PARADE	<i>Agonis flexuosa</i>	Willow Myrtle	G	11	5



## West Footscray

For each street, this list displays the nominated tree species, priority ranking, approximate number of new trees required and year of the 10 Year Planting Program to be planted.

Street Name	Tree Species	Common Name	Priority Ranking	No. of Trees	Year to be Planted
ACACIA COURT	<i>Callistemon viminalis</i> (East) <i>Corymbia maculata</i> (West)	Weeping Bottlebrush (East) Spotted Gum (West)	F	7	4
AITKEN STREET	<i>Callistemon viminalis</i>	Weeping Bottlebrush	A	10	10
ALBERTA STREET	<i>Eucalyptus leucoxylon</i> 'Megalocarpa' <i>Melia azederach</i>	Yellow Gum White Cedar	H	8	7
ALIWA STREET	<i>Melia azederach</i>	White Cedar	E	29	2
ALMA STREET	<i>Melia azederach</i>	White Cedar	J	0	10
ARGYLE STREET	<i>Ulmus parvifolia</i>	Chinese Elm	J	7	9
ASHLEY STREET	<i>Pyrus ussuriensis</i>	Manchurian Pear	J	29	8
BANKSIA COURT	<i>Agonis flexuosa</i> (East) <i>Corymbia citriodora</i> (West)	Willow Myrtle (East) Lemon Scented Gum (West)	J	0	10
BARKLY STREET	<i>Lagerstroemia indica</i> (Ashley St to Summerhill St) <i>Olea europaea</i> 'Tolley's upright'	Crepe Myrtle (Ashley to Summerhill) Tolley's Upright Olive	H	73	4
BARTON STREET	<i>Corymbia ficifolia</i>	Red Flowering Gum	J	0	10
BEAUMONT PARADE	<i>Eucalyptus eximia</i>	Yellow Bloodwood	J	5	10
BERTHANDRA COURT	<i>Melia azederach</i>	White Cedar	A	22	1
BIZANA STREET	<i>Melia azederach</i>	White Cedar	J	3	10
BLANDFORD STREET	<i>Eucalyptus leucoxylon</i> 'Megalocarpa' (West) <i>Pyrus calleryana</i> 'Bradford' (East)	Yellow Gum (West) Bradford Pear (East)	J	2	10
BRAID STREET	<i>Pyrus ussuriensis</i>	Manchurian Pear	J	4	10
BROAD STREET	<i>Eucalyptus leucoxylon</i> 'Euky Dwarf' (Naturestrip) <i>Corymbia maculata</i> (Median)	Yellow Gum (Naturestrip) Spotted Gum (Median)	J	0	10
BRUCE STREET	<i>Tristanopsis laurina</i>	Water Gum	J	0	10
BRUNSWICK STREET	<i>Tristanopsis laurina</i>	Water Gum	J	2	10
BUSCH STREET	<i>Acer buergerianum</i>	Trident Maple	I	6	8
BUXTON STREET	<i>Acer buergerianum</i>	Trident Maple	G	13	5
CALA STREET	<i>Lophostemon confertus</i>	Brush Box	F	45	7
CARMICHAEL STREET	<i>Corymbia ficifolia</i>	Red Flowering Gum	J	3	10
CENTENNIAL STREET	<i>Pyrus calleryana</i> 'Chanticleer'	Chanticleer Pear	J	0	10
CHURCH STREET	<i>Olea europaea</i> 'Sativa'	Olive	J	10	10
CLARENDON PARADE	<i>Acacia podalyrifolia</i>	Queenland Silver Wattle	J	6	10
CLARKE STREET	<i>Eucalyptus leucoxylon</i> 'Megalocarpa'	Yellow Gum	J	7	10
CLIVE STREET	<i>Eucalyptus leucoxylon</i> 'Megalocarpa'	Yellow Gum	J	12	9
CORREA COURT	<i>Agonis flexuosa</i> (East) <i>Corymbia citriodora</i> (West)	Willow Myrtle (East) Lemon Scented Gum (West)	I	2	8
CROMWELL PARADE	<i>Acacia implexa</i>	Lightwood	A	25	9
CROSS STREET	<i>Ulmus parvifolia</i> 'Todd'	Chinese Elm	J	7	10
CURRAJONG STREET	<i>Melia azederach</i>	White Cedar	D	32	9
DARWIN STREET	<i>Callistemon viminalis</i>	Weeping Bottlebrush	B	10	10
DEMPSTER STREET	<i>Pyrus ussuriensis</i>	Manchurian Pear	D	26	1
DERRIMUT STREET	<i>Corymbia maculata</i>	Spotted Gum	A	8	10
DEVONSHIRE STREET	<i>Acer buergerianum</i>	Trident Maple	J	3	10
DIANELLA COURT	<i>Eucalyptus leucoxylon megalocarpa</i> (East) <i>Eucalyptus sideroxylon</i> (West)	Yellow Gum (East) Red Ironbark (West)	J	1	10
DONGOLA ROAD	<i>Lophostemon confertus</i>	Brush Box	J	3	10
DOVE STREET	<i>Hymenosporum flavum</i> (North) <i>Allocasuarina verticillata</i> (South)	Native Fragipanni (North) Weeping Sheoke (South)	J	0	10
DUKE STREET	<i>Tristanopsis laurina</i>	Water Gum	J	2	10
DYSON STREET	<i>Koelreuteria paniculata</i>	Golden Rain Tree	E	10	2
ELPHINSTONE STREET	<i>Melia azederach</i>	White Cedar	J	2	10
ESSEX STREET	<i>Koelreuteria paniculata</i>	Golden Rain Tree	J	32	8
EXHIBITION STREET	<i>Pyrus calleryana</i> 'Chanticleer'	Chanticleer Pear	J	0	10
FIRST STREET	<i>Agonis flexuosa</i>	Willow Myrtle	J	6	10
FONTEIN STREET	<i>Pyrus ussuriensis</i>	Manchurian Pear	J	0	10
GEELONG ROAD	<i>Corymbia maculata</i>	Spotted Gum	J	61	7
GEELONG STREET	<i>Pyrus calleryana</i> 'Chanticleer'	Chanticleer Pear	J	6	10
GLAMIS ROAD	<i>Lophostemon confertus</i>	Brush Box	I	7	8
GRAHAM STREET	<i>Lophostemon confertus</i>	Brush Box	G	9	5
GRAINGERS ROAD	<i>Acacia spp</i>	Wattle	A	34	9
GWEL STREET	<i>Agonis flexuosa</i>	Willow Myrtle	J	8	10
HAMPTON PARADE	<i>Corymbia ficifolia</i>	Red Flowering Gum	J	6	10
HANSEN STREET	<i>Pyrus ussuriensis</i>	Manchurian Pear	J	0	10
HARTLEY AVENUE	<i>Calodendron capense</i>	Cape Chestnut	J	1	10
HATFIELD COURT	<i>Lophostemon confertus</i>	Brush Box	J	2	10

Street Name	Tree Species	Common Name	Priority Ranking	No. of Trees	Year to be Planted
HEX STREET	<i>Eucalyptus leucoxylon</i> 'Euky Dwarf'	Yellow Gum	H	23	5
HOPE STREET	<i>Eucalyptus leucoxylon</i> 'Megalocarpa'	Yellow Gum	J	7	10
INDWE STREET	<i>Eucalyptus leucoxylon</i> (East)	Yellow Gum (East)	J	8	10
	<i>Olea europaea</i> (West)	Olive (West)			
KATHLEEN STREET	<i>Eucalyptus leucoxylon</i> 'Megalocarpa'	Yellow Gum	H	4	7
KHARTOUM STREET	<i>Melia azederach</i> (West)	Melia azederach (West)	I	13	7
	<i>Acacia pendula</i> (East)	Weeping Myall (East)			
KOROROIT STREET	<i>Angophora costata</i>	Smooth Barked Apple	A	16	1
LAE STREET	<i>Tristanopsis laurina</i>	Water Gum	I	8	8
MARCUS AVENUE	<i>Lophostemon confertus</i>	Brush Box	J	2	10
MARGOT STREET	<i>Corymbia ficifolia</i>	Red Flowering Gum	J	4	10
MARKET STREET	<i>Ulmus parvifolia</i>	Chinese Elm	J	0	10
MCARTHUR STREET	<i>Corymbia ficifolia</i>	Red Flowering Gum	C	23	9
MILTON STREET	<i>Olea europaea</i> 'Sativa'	Olive	J	0	10
MITFORD PARADE	<i>Corymbia ficifolia</i>	Red Flowering Gum	A	29	9
MOLESWORTH COURT	<i>Acer buergerianum</i>	Trident Maple	J	0	10
NAPOLÉON STREET	<i>Pyrus ussuriensis</i>	Manchurian Pear	J	10	10
NEIL STREET	<i>Melia azederach</i>	White Cedar	I	7	8
NESNAH STREET	<i>Agonis flexuosa</i>	Willow Myrtle	J	3	10
ORMOND ROAD	<i>Platanus orientalis</i>	Oriental Plane	H	20	6
OXFORD STREET	<i>Callistemon viminalis</i>	Weeping Bottlebrush	I	11	8
PALMERSTON STREET	<i>Melia azederach</i>	White Cedar	J	0	10
PARAMOUNT ROAD	<i>Eucalyptus leucoxylon</i> 'Rosea'	Yellow Gum	G	27	4
PARK AVENUE	<i>Eucalyptus leucoxylon</i> 'Rosea'	Yellow Gum	J	0	10
	(Naturestrip in front of houses)	(Naturestrip in front of houses)			
	<i>Eucalyptus Melliodora</i>	Yellow Box			
	(Along top of retaining wall)	(Along top of retaining wall)			
PITT STREET	<i>Eucalyptus leucoxylon</i> 'Megalocarpa'	Yellow Gum	H	37	4
RICHELIEU STREET	<i>Pyrus ussuriensis</i>	Manchurian Pear	J	0	10
ROBBS ROAD	<i>Tristanopsis laurina</i>	Water Gum	I	21	7
ROBERTS STREET	<i>Angophora costata</i>	Smooth Barked Apple	J	25	9
RONDELL AVENUE	<i>Olea europaea</i> 'Sativa'	Olive	J	1	10
RUPERT STREET	<i>Melia azederach</i>	White Cedar	G	108	2
RUSSELL STREET	<i>Olea europaea</i> 'Sativa'	Olive	J	2	10
SOMERVILLE ROAD	<i>Lagerstroemia indica</i>	Crepe Myrtle	J	23	8
SOUDAN ROAD	<i>Melia azederach</i>	White Cedar	I	18	7
SREDNA STREET	<i>Agonis flexuosa</i>	Willow Myrtle	H	13	6
STANHOPE STREET	<i>Lophostemon confertus</i>	Brush Box	J	0	10
STANLAKE STREET	<i>Olea europaea</i> 'Sativa'	Olive	J	1	10
STANLEY STREET	<i>Pyrus ussuriensis</i>	Manchurian Pear	J	0	10
STONEMARK COURT	<i>Callistemon spp</i>	Bottlebrush	I	4	8
STRADBROKE STREET	<i>Eucalyptus mannifera</i>	Red Spotted Gum	E	18	9
SUFFOLK STREET	<i>Eucalyptus leucoxylon</i> 'Megalocarpa'	Yellow Gum	J	26	8
SUMMERHILL ROAD	<i>Pyrus calleryana</i> 'Chanticleer'	Chanticleer Pear	H	42	4
SUNSHINE ROAD	<i>Angophora costata</i>	Smooth Barked Apple	H	84	3
TOTTENHAM PARADE	<i>Agonis flexuosa</i>	Willow Myrtle	F	13	3
TUCKER STREET	<i>Callistemon Viminalis</i>	Weeping Bottlebrush	J	7	10
VIEW STREET	<i>Acer buergerianum</i>	Trident Maple	J	0	10
VINE STREET	<i>Lophostemon confertus</i>	Brush Box	J	6	10
WAIORA PARADE	<i>Koelreuteria paniculata</i>	Golden Rain Tree	I	12	8
WALDEN STREET	<i>Olea europaea</i>	Olive	J	3	10
WARATAH STREET	<i>Corymbia ficifolia</i>	Red Flowering Gum	G	28	4
WARLEIGH ROAD	<i>Fraxinus angustifolia</i>	Desert Ash	J	4	10
WATTLE STREET	<i>Acacia podalyriifolia</i>	Queensland Silver Wattle	I	7	8
WELLINGTON STREET	<i>Callistemon spp</i> (North)	Bottlebrush (North)	J	7	10
	<i>Corymbia ficifolia</i> (South)	Red Flowering Gum (South)			
WEST STREET	<i>Angophora costata</i>	Smooth Barked Apple	I	4	8
WHITELY PARADE	<i>Acacia implexa</i>	Lightwood	A	22	9

## Yarraville

For each street, this list displays the nominated tree species, priority ranking, approximate number of new trees required and year of the 10 Year Planting Program to be planted.

Street Name	Tree Species	Common Name	Priority Ranking	No. of Trees	Year to be Planted
ADALEIGH STREET	<i>Callistemon viminalis</i>	Weeping Bottlebrush	G	19	5
ADENEY STREET	<i>Pyrus calleryana</i>	Callery Pear	J	0	10
AGNES STREET	<i>Lagerstroemia indica</i> 'Tuskarora'	Crepe Myrtle	A	8	8
ALICE STREET	<i>Tristaniopsis laurina</i>	Water Gum	J	2	10
ANDERSON STREET	<i>Corymbia ficifolia</i> (South)	Red Flowering Gum (South)	H	32	3
	<i>Pyrus ussuriensis</i> (North)	Manchurian Pear (North)			
	<i>Ulmus parvifolia</i> (W'town Rd to Severn St)	Chinese Elm (W'town Rd to Severn St)			
ANGLISS STREET	<i>Callistemon salignus</i>	Weeping Bottlebrush	J	0	10
ASTON STREET	<i>Tristaniopsis laurina</i>	Water Gum	A	6	3
AUSTIN CRESCENT E	<i>Melia azederach</i>	White Cedar	H	6	7
AUSTIN CRESCENT W	<i>Melia azederach</i>	White Cedar	I	8	8
AVOCA STREET	<i>Acer platinoides</i> 'Globosum'	Globe Norway Maple	A	16	3
BALLARAT STREET	<i>Pyrus ussuriensis</i>	Manchurian Pear	C	34	2
BALLARD STREET	<i>Pyrus ussuriensis</i>	Manchurian Pear	J	0	10
BANOOL AVENUE	<i>Olea europaea</i> 'Sativa'	Olive	J	0	10
BARNET STREET	<i>Olea europaea</i> 'Sativa'	Olive	J	6	10
BARRETT COURT	<i>Tristaniopsis laurina</i>	Water Gum	I	4	8
BAYVIEW ROAD	<i>Ulmus parvifolia</i>	Chinese Elm	J	0	10
BEATRICE STREET	<i>Malus ioensis</i> 'Plena'	Bechtels Crab Apple	J	0	10
BELLAIRS AVENUE	<i>Agonis flexuosa</i>	Willow Myrtle	J	0	10
BENA STREET	<i>Agonis flexuosa</i>	Willow Myrtle	I	26	7
BENBOW STREET	<i>Melia azederach</i>	White Cedar	J	15	9
BERRY STREET	<i>Olea europaea</i> 'Sativa'	Olive	J	5	10
BEVERLEY STREET	<i>Callistemon viminalis</i>	Weeping Bottlebrush	I	5	8
	<i>Lophostemon confertus</i>	Chanticleer Pear			
BIRMINGHAM STREET	<i>Pyrus calleryana</i> 'Chanticleer'	Chanticleer Pear	I	5	9
BISHOP STREET	<i>Ulmus parvifolia</i>	Chinese Elm	J	4	10
BLACKWOOD STREET	<i>Acer buergerianum</i> (West of rail)	Trident Maple (West of Rail)	I	27	7
	<i>Acer platinoides</i> 'Globosum' (East of rail)	Globe Norway Maple (East of Rail)			
	<i>Melia azederach</i> (Fehon St to W'town Rd)	White Cedar (Fehon St to W'town Rd)			
BLANCHE STREET	<i>Callistemon viminalis</i>	Weeping Bottlebrush	J	0	10
BROMYARD STREET	<i>Agonis flexuosa</i>	Willow Myrtle	J	4	10
BROOKS PLACE	<i>Acacia implexa</i>	Lightwood	D	4	9
BUNINYONG STREET	<i>Pyrus calleryana</i> 'Chanticleer'	Chanticleer Pear	J	9	10
BURNS STREET	<i>Malus ioensis</i> 'Plena'	Bechtels Crab Apple	J	0	10
CANTERBURY STREET	<i>Lagerstroemia indica</i> (West)	Crepe Myrtle	J	4	10
	Confirmation Pending (East)				
CASTLE STREET	<i>Melia azederach</i>	White Cedar	J	1	10
CASTLEMAINE STREET	<i>Eucalyptus leucoxylon</i> 'Euky Dwarf' (East)	Yellow Gum (East)	H	22	5
	<i>Lagerstroemia indica</i> (West)	Crepe Myrtle (West)			
CAWLEY ROAD	<i>Agonis flexuosa</i>	Willow Myrtle	E	25	10
CECIL STREET	<i>Olea europaea</i> 'Picual'	Picual Olive	J	0	10
CEMETERY ROAD	<i>Ulmus parvifolia</i>	Chinese Elm	J	2	10
CHAPMAN STREET	<i>Pyrus calleryana</i> 'Chanticleer'	Chanticleer Pear	J	0	10
CHARLOTTE STREET	<i>Callistemon viminalis</i>	Weeping Bottlebrush	H	14	6
CLARE STREET	<i>Lagerstroemia indica</i>	Crepe Myrtle	A	6	9
CLARENDON STREET	<i>Olea europaea</i> 'Sativa'	Olive	J	2	10
CORRIS STREET	<i>Melia azederach</i>	White Cedar	J	3	10
COURT STREET	<i>Melia azederach</i>	White Cedar	J	5	10
CRANBROOK STREET	<i>Lophostemon confertus</i>	Brush Box	G	14	5
CUMING STREET	<i>Acacia implexa</i>	Lightwood	H	6	7
DAY STREET	<i>Melia azederach</i>	White Cedar	J	0	10
DEAKIN STREET	<i>Melia azederach</i>	White Cedar	J	4	10
DEAN STREET	<i>Pyrus calleryana</i> 'Chanticleer'	Chanticleer Pear	A	11	1
DELEWARE STREET	<i>Malus ioensis</i> 'Plena'	Bechtels Crab Apple	G	8	5
DICKENS STREET	<i>Eucalyptus leucoxylon</i> 'Euky Dwarf'	Yellow Gum	J	0	10
DREW STREET	<i>Agonis flexuosa</i>	Willow Myrtle	H	22	6
DUCKER STREET	<i>Eucalyptus leucoxylon</i> 'Megalocarpa'	Yellow Gum	I	4	8
EARSDON STREET	<i>Angophora costata</i>	Smoothed Barked Apple	A	7	8
EIRENE STREET	<i>Eucalyptus torquata</i>	Coral Gum	J	12	9
ELIZABETH STREET	<i>Lagerstroemia indica</i>	Crepe Myrtle	J	6	10
FAIRLIE STREET	<i>Pyrus calleryana</i> 'Chanticleer'	Chanticleer Pear	J	3	10
FEHON STREET	<i>Quercus robur</i>	English Oak	I	23	7
FIELDLING STREET	<i>Lagerstroemia indica</i>	Crepe Myrtle	J	0	10
FINLAY STREET	<i>Tristaniopsis laurina</i>	Water Gum	H	10	6



Street Name	Tree Species	Common Name	Priority Ranking	No. of Trees	Year to be Planted
FOGARTY AVENUE	<i>Acacia implexa</i>	Lightwood	F	55	2
FORREST STREET	<i>Pyrus calleryana</i> 'Chanticleer'	Chanticleer Pear	J	0	10
FRANCIS STREET	<i>Ulmus parvifolia</i>	Chinese Elm	H	107	3
FRASER STREET	<i>Eucalyptus melliodora</i>	Yellow Box	J	0	10
FREAM STREET	<i>Ulmus parvifolia</i>	Chinese Elm	J	0	10
FREDERICK STREET	<i>Eucalyptus leucoxylon</i> 'Megalocarpa'	Yellow Gum	J	0	10
FREE STREET	<i>Juniperus</i> 'Skyrocket'	Skyrocket Juniper	H	4	7
FREEMAN STREET	<i>Lophostemon confertus</i>	Brush Box	I	12	8
FYANS STREET	<i>Melia azederach</i>	White Cedar	A	3	10
GAMON STREET	<i>Pyrus ussuriensis</i>	Manchurian Pear	J	2	10
GEELONG ROAD	<i>Corymbia maculata</i>	Spotted Gum	J	1	10
GENT STREET	<i>Ulmus parvifolia</i>	Chinese Elm	J	0	10
GEORGE STREET	<i>Callistemon viminalis</i>	Weeping Bottlebrush	J	2	10
GLADSTONE STREET	<i>Olea europaea</i> 'Picual'	Picual Olive	J	3	10
GLOBE STREET	<i>Acer buergerianum</i>	Trident Maple	J	0	10
GORDON PARADE	<i>Pyrus ussuriensis</i>	Manchurian Pear	J	0	10
GOULBURN STREET	<i>Eucalyptus forestiana</i>	Fushia Gum	I	6	5
GRACE STREET	<i>Lagerstroemia indica</i>	Crepe Myrtle	A	15	1
GRAY STREET	<i>Olea europaea</i>	Olive	H	13	6
HALL STREET	<i>Tristanopsis laurina</i>	Water Gum	A	13	10
HAMILTON STREET	<i>Platanus orientalis</i>	Oriental Plane	J	2	10
HANCE STREET	<i>Acer buergerianum</i>	Trident Maple	I	5	9
HARRIET STREET	<i>Pyrus calleryana</i> 'Chanticleer'	Chanticleer Pear	I	2	8
HAWKHURST STREET	<i>Ulmus parvifolia</i>	Chinese Elm	J	22	8
HAWTHORN STREET	<i>Tristanopsis laurina</i>	Water Gum	J	2	10
HIGH STREET	<i>Fraxinus griffithii</i>	Evergreen Ash	E	11	3
HIGHGATE STREET	<i>Lophostemon confertus</i>	Brush Box	G	11	5
HOOD STREET	<i>Pyrus calleryana</i> 'Chanticleer'	Chanticleer Pear	A	7	8
HUGHES STREET	<i>Tristanopsis laurina</i>	Water Gum	J	2	10
HYDE STREET	<i>Tristanopsis laurina</i>	Water Gum	G	82	5
JEPSON STREET	<i>Eucalyptus leucoxylon</i> 'Rosea'	Yellow Gum	H	6	7
JEWELL STREET	<i>Tristanopsis laurina</i>	Water Gum	H	5	7
JULIAN STREET	<i>Tristanopsis laurina</i>	Water Gum	J	3	10
KENT STREET	<i>Eucalyptus leucoxylon</i> 'Megalocarpa'	Yellow Gum	J	0	10
KIDMAN STREET	<i>Tristanopsis laurina</i>	Water Gum	J	2	10
KINGSTON STREET	<i>Eucalyptus leucoxylon</i> 'Megalocarpa'	Yellow Gum	I	8	8
KNOX STREET	<i>Callistemon salignus</i>	Willow Bottlebrush	I	6	8
LEEK STREET	<i>Callistemon salignus</i>	Willow Bottlebrush	A	6	10
LENNOX STREET	<i>Callistemon salignus</i> (Hyde St to Stephen St)	Willow Bottlebrush (Hyde to Stephen)	J	3	10
	<i>Ulmus parvifolia</i> (Willis St to Stephen St)	Chinese Elm (Willis to Stephen)			
LINCOLN STREET	<i>Melia azederach</i>	White Cedar	J	0	10
LITTLE DAVID STREET	Confirmation Pending		J	5	10
LOCH STREET	<i>Eucalyptus leucoxylon</i> 'Megalocarpa'	Yellow Gum	H	7	7
LORMER STREET	<i>Tristanopsis laurina</i>	Water Gum	J	0	10
LORNE STREET	<i>Callistemon salignus</i>	Willow Bottlebrush	J	4	10
LOVE STREET	<i>Agonis flexuosa</i>	Willow Myrtle	J	0	10
LYELL STREET	<i>Eucalyptus leucoxylon</i> 'Megalocarpa'	Yellow Gum	J	19	9
MACKAY STREET	<i>Melia azederach</i>	White Cedar	J	2	10
MAGGIE STREET	<i>Eucalyptus leucoxylon</i> 'Megalocarpa'	Yellow Gum	J	4	10
MARJORY STREET	<i>Pyrus calleryana</i> 'Chanticleer'	Chanticleer Pear	J	3	10
MARYSTON STREET	<i>Pyrus ussuriensis</i>	Manchurian Pear	J	8	10
MILL AVENUE	<i>Pyrus calleryana</i>	Callery Pear	J	3	10
MINNIE STREET	<i>Eucalyptus leucoxylon</i> 'Megalocarpa'	Yellow Gum	F	4	9
MONTAGUE STREET	<i>Pyrus calleryana</i> 'Chanticleer'	Chanticleer Pear	J	0	10
MORVEN STREET	<i>Tristanopsis laurina</i>	Water Gum	G	11	5
MURRAY STREET	<i>Eucalyptus leucoxylon</i> 'Megalocarpa' (West)	Yellow Gum	H	7	7
	Confirmation Pending (East)				
NEWCASTLE STREET	<i>Malus ioensis</i> 'Plena'	Bechtels Crab Apple	I	12	9
NEYLON STREET	<i>Ulmus parvifolia</i>	Chinese Elm	J	2	10
NICHOLSON STREET	<i>Eucalyptus leucoxylon</i> 'Rosea'	Yellow Gum	J	8	10
NORFOLK STREET	<i>Callistemon viminalis</i>	Weeping Bottlebrush	J	5	10
OFARRELL STREET	<i>Callistemon viminalis</i> (South)	Weeping Bottlebrush (South)	J	13	9
	<i>Corymbia ficifolia</i> (North)	Red Flowering Gum (North)			
OVENS STREET	<i>Tristanopsis laurina</i>	Water Gum	G	30	2
PEARCE STREET	<i>Hymenosporum flavum</i>	Native Frangipanni	J	0	10
PENTLAND PARADE	<i>Corymbia maculata</i>	Spotted Gum	J	0	10
POWELL STREET	<i>Melia azederach</i> (Francis St to Salisbury St)	White Cedar (Francis to Salisbury)	J	9	10
	<i>Platanus orientalis</i> (Anderson St to Francis St)	Oriental Plane (Anderson to Francis)			
PRENTICE STREET	<i>Malus ioensis</i> 'Plena'	Bechtels Crab Apple	H	3	7
PRINCESS STREET	<i>Olea europaea</i> 'Sativa'	Olive	J	4	10
REGENT STREET	<i>Acacia implexa</i>	Lightwood	J	0	10
RICHARDS STREET	<i>Lophostemon confertus</i>	Brush Box	J	0	10

Street Name	Tree Species	Common Name	Priority Ranking	No. of Trees	Year to be Planted
ROBERTS STREET	<i>Angophora costata</i>	Smooth Barked Apple	J	14	9
RONA AVENUE	<i>Eucalyptus leucoxylon</i> 'Megalocarpa'	Yellow Gum	J	4	10
SALISBURY STREET	<i>Melia azederach</i>	White Cedar	G	17	5
SANDERSON STREET	<i>Ulmus parvifolia</i>	Chinese Elm	J	0	10
SANDFORD GROVE	Confirmation Pending		G	3	7
SCHILD STREET	<i>Lagerstroemia indica</i> 'Tuskarora' (Stephen St to Willis St)	Crepe Myrtle (Stephen to Willis)	J	3	10
	<i>Ulmus procera</i> 'Louis Van Houtte' (Hyde St to Stephen St)	Golden Elm (Hyde to Stephen)			
SEVERN STREET	<i>Corymbia maculata</i> (Francis St to Somerville, west side only)	Spotted Gum	J	25	8
	<i>Corymbia eximia</i> (Francis St to Somerville, east side & Francis St to Benbow)	Yellow Bloodwood			
SIMPSON STREET	<i>Acacia implexa</i> (East)	Lightwood (East)	J	6	10
	<i>Olea europea</i> 'Tolly's Upright' (West)	Tolly's Upright Olive (West)			
SOMERVILLE ROAD	<i>Angophora cosata</i> (North)	Smooth Barked Apple (North)	H	80	4
	<i>Lagerstroemia indica</i> (South)	Crepe Myrtle (South)			
ST LEONARDS AVENUE	<i>Eucalyptus leucoxylon</i> 'Megalocarpa' (East)	Yellow Gum (East)	J	8	10
	<i>Fraxinus griffithii</i> (West)	Evergreen Ash (West)			
STANGER STREET	<i>Malus ioensis</i> 'Plena'	Bechtels Crab Apple	J	0	10
STEPHEN STREET	<i>Angophora costata</i>	Smooth Barked Apple	J	24	8
	<i>Lagerstroemia indica</i> 'Tuskarora'	Crepe Myrtle			
STEWART STREET	<i>Lagerstroemia indica</i>	Crepe Myrtle	J	0	10
STONE STREET	<i>Melia azederach</i>	White Cedar	H	7	7
STOOKE STREET	<i>Fraxinus griffithii</i>	Evergreen Ash	J	0	10
STOREY STREET	<i>Acacia implexa</i>	Lightwood	A	5	9
STURT STREET	<i>Callistemon viminalis</i>	Weeping Bottlebrush	J	3	10
SUSSEX STREET	<i>Angophora costata</i>	Smooth Barked Apple	G	20	4
TARRENGOWER STREET	<i>Malus ioensis</i> 'Plena' (East)	Bechtels Crab Apple (East)	J	0	10
	<i>Pyrus ussuriensis</i> (West)	Manchurian Pear (west)			
TAYLOR STREET	<i>Tristaniopsis laurina</i>	Water Gum	J	2	10
TENTERDEN STREET	<i>Eucalyptus leucoxylon</i> 'Euky Dwarf'	Yellow Gum	H	12	6
THE BOULEVARD	<i>Melia azederach</i>	White Cedar	J	0	10
THE WILLOWS	Confirmation Pending		A	1	10
THOMAS STREET	<i>Tristaniopsis laurina</i>	Water Gum	J	0	10
TONGUE STREET	<i>Quercus palustris</i>	Pin Oak	J	11	9
TUPPEN STREET	<i>Melia azederach</i>	White Cedar	I	14	7
URWIN STREET	<i>Melia azederach</i>	White Cedar	J	0	10
VOCKLER STREET	Confirmation Pending		J	0	10
WEMBLEY AVENUE	<i>Ulmus parvifolia</i>	Chinese Elm	J	4	10
WHITEHALL STREET	<i>Melia azederach</i>	White Cedar	I	86	5
WILKINS STREET	<i>Callistemon salignus</i>	Willow Bottlebrush	J	11	9
WILLIAMSTOWN ROAD	<i>Lophostemon confertus</i>	Brush Box	I	79	6
WILLIS STREET	<i>Ulmus procera</i> 'Louis Van Houtte'	Golden Elm	H	5	7
WILSON STREET	<i>Hymenosporum flavum</i>	Native Frangipanni	J	0	10
WOODS STREET	<i>Callistemon spp</i>	Bottle Brush	A	9	5
YORK STREET	<i>Ulmus parvifolia</i>	Chinese Elm	J	0	10

## 9 When Planting Occurs

Council strongly supports an equal distribution of street tree planting resources throughout the City.

Residents will be notified by mail prior to their street being planted as scheduled in the 10 Year Planting Program. This correspondence will include details of when planting will occur, the nominated tree species, the extent of the planting and any other arrangements if required, such as traffic management.

Council is committed to consulting with the community and involving them in the street tree planting process. Community input on planting locations and opportunities for additional planting will be considered.

The community will be encouraged to *'Adopt a Tree'* by helping Council establish each new street tree. This will take the form of:

- Watering new street trees during the warmer months.
- Not parking cars on the naturestrip close to (<2m) a new street tree.
- Not storing materials, such as bricks, close to (<2m) a new street tree
- Reporting to Council damage or vandalism to any street tree.
- Reporting to Council any street tree in poor health.

In areas where vandalism is a concern, the increased ownership of street trees may reduce the likelihood of damage. Some community assisted planting funds will be used to encourage this involvement and ownership. The process of organising meetings and planning and participating in working bees, will contribute to this sense of ownership as well as help develop a sense of community.

A tree removed as a result of storm damage, vandalism or imminent risk may be replaced without notice.

## 10 Processes

### Development Applications

As part of development applications for new dwellings and multi-unit developments, an applicant may request installation of a new vehicle crossover or alteration to an existing crossover. This may impact upon existing street trees and must be discussed at the pre-application stage.

Council expects residents and developers to take into account the location of street trees when designing buildings or contemplating vehicle crossings to avoid adverse impacts upon street trees. **The retention of existing trees should be of paramount consideration.** Council will provide relevant advice to applicants regarding street tree selection.

It cannot be assumed that a tree will be removed to provide access and a vehicle crossing permit cannot be guaranteed. If a property owner requires a new vehicle crossing near an existing street tree, a Council Arborist will assess the tree at the planning stage and provide a response to the planning officer.

If a tree is damaged by development activity Council's Arborist will determine what remedial actions are required including removal and replacement of the tree.

If a tree is to be removed Council will seek compensation for the removal and the replacement of the tree. If a tree is unlawfully damaged or removed, Council will seek compensation for the loss and replacement of the tree.

Council will use the Melbourne City Council tree valuation methodology to determine the value of the tree.

### New Developments and Subdivisions

For new subdivisions Council will authorise both tree species selection and the street tree planting plan at the planning stage. Species selection must be consistent with this Strategy and the 10 Year Planting Program. Council's Arborist will liaise with developers, or their representatives, for the selection of street tree species.

Existing street trees are to be protected and retained in accordance with **AS4970 2009, Protection of Trees on Construction Sites.**



## Removal of Trees

Council will not remove healthy or non-dangerous trees. If a tree is problematic all other possible remedial solutions will be explored before tree removal is considered.

A tree may be removed where:

- The tree is assessed by a qualified Council Arborist and is determined to be a risk to the public or infrastructure and maintenance or remedial action can not remove or reduce that risk.

and/or;

- The tree is proven to be actively damaging structures, services or infrastructure.

and/or;

- Is irrevocably effected by pests or disease and/or constitutes a threat to the City's tree population.

and/or;

- The tree is listed on Council's Non Preferred Species List and is demonstrating any of the conditions above.

## Major Projects

In certain circumstances such as a proposal for a major capital project or major arterial road (not a local street), an existing street tree may be removed in the interest of establishing a significant, consistent avenue of planting. This will only occur where the existing tree to be removed and replaced represents less than ten percent (10%) of the existing street or avenue planting and is approved by a Council Arborist.

## Local Road Reconstructions

Existing trees may require removal as a result of road reconstruction or infrastructure works where tree retention is not possible. Council will, in the first instance, ensure that all design options to retain existing trees are fully explored before trees are identified for removal. For road reconstructions where tree removals diminish the quantity of trees in a street (that substantially changes the street tree character), residents will have the ability to nominate a preferred species from the Preferred Tree Species List. This will be undertaken in targeted consultation for streets undergoing redesign. Council's Arborist will make the final decision on tree removal and new species selection based on resident input, and advise residents prior to construction.

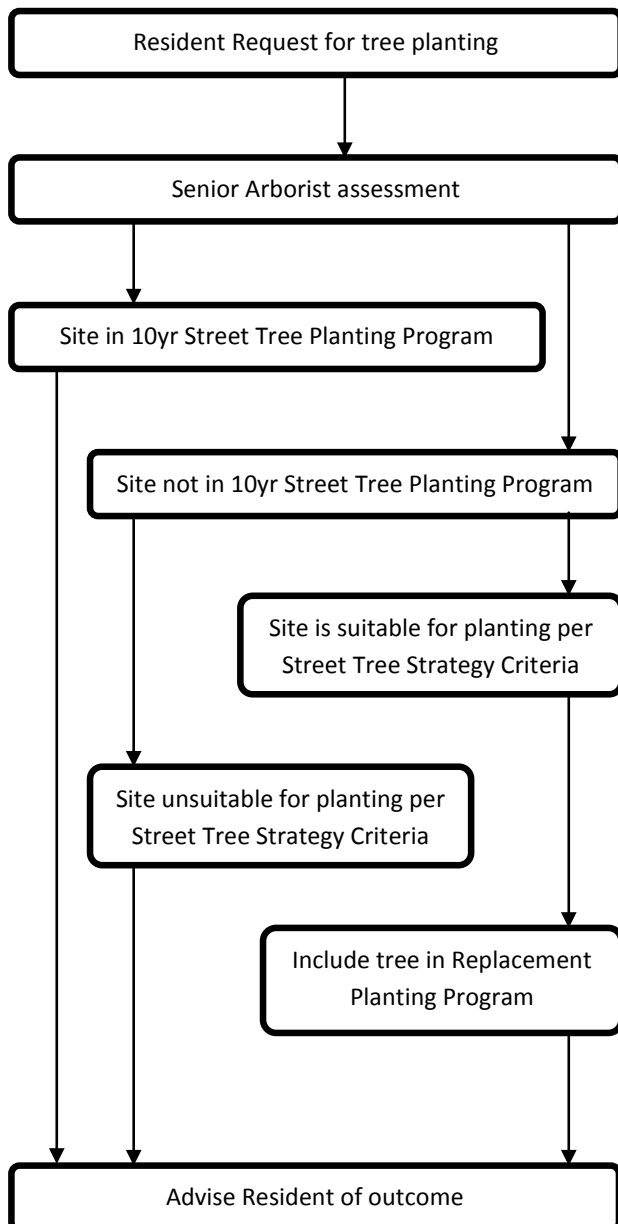
## Resident Requests

### Planting Request

Residents may request Council to install a new street tree where:

- A tree has died.
- A tree has been severely damaged.
- A tree is performing very poorly or is in serious decline.
- A street tree location is vacant.

A request may be lodged by a resident, a group of residents or a business. Each request will be logged and an assessment made by a Council Arborist. If the location is included within the 10 Year Planting Program the resident will be advised of the relevant details and timeframes. If the location is not within the 10 Year Planting Program the location will be assessed for its suitability for planting in accordance with the Street Tree Strategy and the resident advised of the outcome. If the site has been deemed suitable the location will be added to the Replacement Planting Program, which may be undertaken in the planting season of May to September each year.



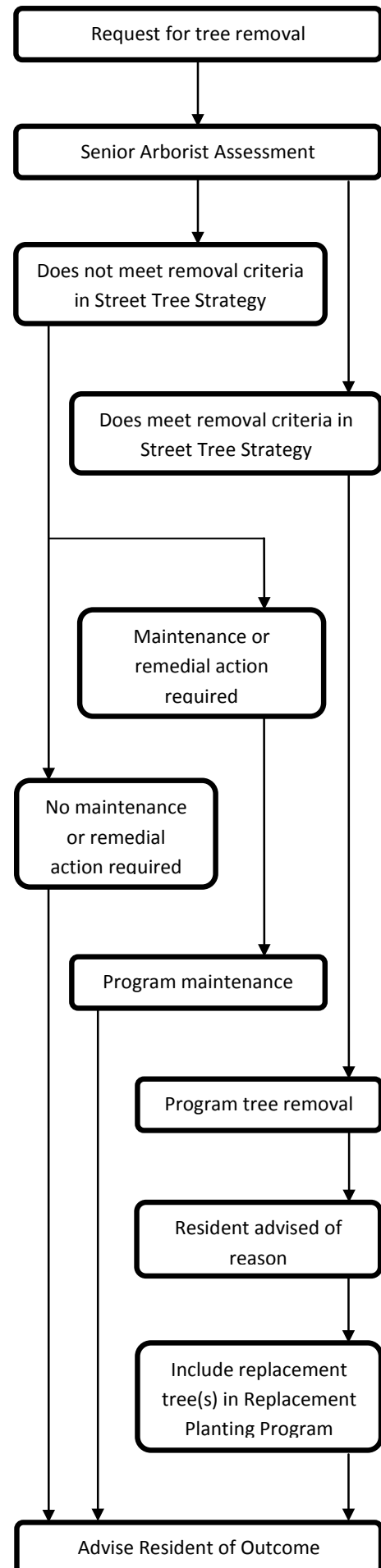
### Tree Removal Requests

A resident may request the removal of a tree. Each request will be logged and an assessment made by Council's Arborist against the removal criteria.

If the tree in does not meet the removal criteria it will then be assessed by a Council Arborist for maintenance or remedial action. If maintenance or remedial action is required this will be programmed and the resident advised. The resident will also be advised if no action is required.

If the tree does not meet the removal criteria it will not be removed.

For trees that are approved for removal, this work will be programmed and a replacement added to the replacement program and the resident advised.



## Tree Removal Criteria

No tree will be removed for the following reasons:

- Leaf, fruit, sap or the dropping of any other debris.
- Because birds or bats are roosting, feeding, nesting or in any other way utilising the tree as habitat.
- Because possums, bats or other fauna are utilising the tree as habitat.
- Over shading.

A tree may be removed where:

- The resident can prove the tree is actively damaging property or infrastructure.
- Once assessed by a Council Arborist the tree is determined to be a risk to the public or infrastructure and maintenance or remedial action can not satisfactorily remove or reduce that risk.
- The tree is senescent or dying.
- The tree contributes little to the streetscape's visual appeal or uniformity for avenue planting.
- The tree is not a preferred species.
- The tree is unsuitable for the position: is suckering, has expansive root systems, thorns, is of exceptional size, is irritant (allergic) or adversely upon impacting infrastructure.

## Planting on Naturestrips

Naturestrip planting is permissible in accordance with the **Naturestrip Landscape Policy Guidelines** which:

- Allows the development of sustainable alternatives to a turf naturestrip with the aim of reducing water and energy consumption
- Provides a choice for residents who are unable to maintain a turf naturestrip
- Further develops the urban landscape with an emphasis on the use of native/indigenous plants and the provision of micro-habitats

The **Naturestrip Landscape Policy Guidelines** are available on Council's website or by contacting Council directly.

## Planting Without Consent

If a tree is planted within a road reserve without consent Council's Arborist will make an inspection to determine if the tree will be retained or removed. Reasons a tree will be removed include:

- Species is on the Non-Preferred Species List.
- Constitutes an unacceptable risk to the public or property.
- Adversely impacts on the street or neighbourhood character.
- Conflicts with any Council planting program.
- Unable to be programmed into a maintenance program.

Eveline Avenue, Maribyrnong





## Appendix 01 - Preferred Tree Species List

Genus	Species	Cultivar, Variety or Subspecies	Common Name	Deciduous	Narrow Nature strip	Medium Nature strip	Large Nature strip	Footpath Cut-Out	Road Cut-Out	Aerial Bundled Cable	Low Voltage	High Voltage
										Use Under		
Acacia	<i>pendula</i>		Weeping Myall			✓	✓					
Acacia	<i>podalyriifolia</i>		Queensland Silver Wattle			✓	✓			✓	✓	✓
Acacia	<i>implexa</i>		Lightwood		✓	✓	✓	✓	✓			
Acer	<i>x freemanii</i>	'Autumn Blaze'	Red Maple	✓		✓	✓					
Acer	<i>x freemanii</i>	'Jeffersred'	Autumn Blaze Maple	✓		✓	✓					
Acer	<i>buergerianum</i>		Trident Maple	✓	✓	✓	✓	✓	✓	✓	✓	✓
Acer	<i>platanoides</i>	'Columnare'	Norway Maple	✓		✓	✓					
Acer	<i>platinoides</i>	'Globosum'	Maple	✓	✓	✓	✓					✓
Agonis	<i>flexuosa</i>		Willow Myrtle			✓	✓					
Allocasuarina	<i>verticillata</i>		Drooping Sheok			✓	✓			✓	✓	✓
Allocasuarina	<i>torulosa</i>		Drooping Sheok			✓	✓					
Allocasuarina	<i>littoralis</i>		Black Sheoak			✓	✓		✓			
Angophora	<i>costata</i>		Smoothed Barked Apple			✓	✓		✓			
Brachychiton	<i>acerifolius</i>		Illawarra Flame Tree				✓					
Callistemon	<i>citrinus</i>		Lemon Scented Bottlebrush		✓	✓	✓	✓	✓	✓	✓	✓
Callistemon		'Harkness'	Bottlebrush		✓	✓	✓	✓	✓	✓	✓	✓
Callistemon	<i>x acerifolia</i>		Willow Bottlebrush		✓	✓	✓	✓	✓	✓	✓	✓
Callistemon	<i>viminialis</i>		Weeping Bottlebrush		✓	✓	✓	✓	✓	✓	✓	✓
Calodendrum	<i>pseudoacacia</i>		Cape Chestnut	Semi			✓					
Corymbia	<i>maculata</i>		Spotted Gum			✓	✓					
Corymbia	<i>eximia</i>		Yellow Bloodwood			✓	✓		✓	✓	✓	✓
Corymbia	<i>citriodora</i>		Lemon Scented Gum			✓	✓		✓			
Corymbia	<i>ficifolia</i>		Red-flowering Gum				✓					
Corymbia		'Summer Red'	Summer Red			✓	✓		✓	✓	✓	✓
Eucalyptus	<i>torquata</i>		Coral Gum			✓	✓		✓	✓	✓	✓
Eucalyptus	<i>microcorys</i>		Tallow Wood			✓	✓					
Eucalyptus	<i>microcarpa</i>		Grey Box				✓					
Eucalyptus	<i>melliodora</i>		Yellow Box				✓					
Eucalyptus	<i>mannifera</i>		Red Spotted Gum			✓	✓		✓			
Eucalyptus	<i>leucoxylon</i>	megalocarpa	Yellow Gum			✓	✓		✓			
Eucalyptus	<i>leucoxylon</i>	'Rosea'	Yellow Gum		✓	✓	✓	✓	✓	✓	✓	✓
Eucalyptus	<i>leucoxylon</i>	'Euky Dwarf'	Euky Dwarf			✓	✓		✓			
Eucalyptus	<i>forrestiana</i>		Fuchsia Mallee		✓	✓	✓	✓	✓	✓	✓	✓
Eucalyptus	<i>scoparia</i>		Wallangara White Gum			✓	✓					
Eucalyptus	<i>sideroxylon</i>		Red Ironbark				✓		✓			
Fraxinus	<i>velutina</i>		Arizona Ash	✓		✓	✓	✓		✓	✓	✓
Fraxinus	<i>pennsylvanica</i>		Red Ash	✓			✓					
Fraxinus	<i>griffithii</i>		Evergreen Ash	✓	✓	✓	✓	✓	✓	✓	✓	✓
Ginkgo	<i>biloba</i>		Maidenhair Tree	✓			✓					
Hymenosporum	<i>flavum</i>		Native Frangipani			✓	✓					
Jacaranda	<i>mimosifolia</i>		Jacaranda	✓		✓	✓					
Koelreuteria	<i>paniculata</i>		Golden Rain Tree			✓	✓			✓	✓	✓
Lagerstroemia	<i>indica</i>		Crepe Myrtle	✓	✓	✓	✓	✓	✓	✓	✓	✓
Lagerstroemia	<i>indica</i>	x L.fauriei 'Tuscarora'	Crepe Myrtle	✓	✓	✓	✓	✓	✓	✓	✓	✓
Laurus	<i>nobilis</i>		Bay Laurel			✓	✓	✓	✓	✓	✓	✓
Lophostemon	<i>confertus</i>		Brush Box			✓	✓		✓		✓	✓
Malus	<i>ioensis</i>	'Plena'	Bechtel CrabApple	✓	✓	✓	✓	✓	✓	✓	✓	✓
Melia	<i>azedarach</i>		White Cedar	✓		✓	✓		✓			
Olea	<i>europaea</i>	'Tolly's Upright'	Olive		✓	✓	✓	✓	✓	✓	✓	✓
Olea	<i>europaea</i>	'Swan Hill'	Olive		✓	✓	✓	✓	✓	✓	✓	✓
Olea	<i>europaea</i>	'Sativa'	Olive		✓	✓	✓			✓	✓	✓
Olea	<i>europaea</i>	'Picual'	Olive			✓	✓			✓	✓	✓
Phoenix	<i>canariensis</i>		Canary Island Palm				✓		✓			
Platanus	<i>occidentalis</i>		American Sycamore	✓			✓					
Pyrus	<i>ussuriensis</i>		Manchurian Pear	✓	✓		✓	✓	✓	✓	✓	✓
Pyrus	<i>calleryana</i>	'Bradford'	Pear	✓		✓	✓		✓			
Pyrus	<i>calleryana</i>	'Chanticleer'	Chanticleer	✓	✓	✓	✓	✓	✓	✓	✓	✓
Pyrus	<i>calleryana</i>	'Capital'	Pear	✓	✓	✓	✓	✓	✓	✓	✓	✓
Quercus	<i>rubra</i>		Red Oak	✓		✓	✓		✓	✓	✓	✓
Quercus	<i>robur</i>	'Fastigiata'	Upright English Oak	✓		✓	✓	✓				
Quercus	<i>robur</i>		English Oak	✓		✓	✓					
Quercus	<i>palustris</i>	'Pringreen'	Green Pillar	✓		✓	✓		✓			
Quercus	<i>palustris</i>		Pin Oak	✓		✓	✓					
Quercus	<i>canariensis</i>		Algerian Oak				✓					
Tristanopsis	<i>laurina</i>		Water Gum		✓	✓	✓	✓	✓	✓	✓	✓
Ulmus	<i>parvifolia</i>		Chinese Elm	✓		✓	✓		✓		✓	✓
Ulmus	<i>parvifolia</i>	'Todd'	Chinese Elm	✓		✓	✓		✓		✓	✓
Waterhousia	<i>floribunda</i>		Weeping Lillypilly			✓	✓		✓			
Zelkova	<i>serrata</i>	'Green Vase'	Zelcova	✓		✓	✓	✓	✓	✓	✓	✓

## Appendix 02 – Non-Preferred Tree Species List

Genus	Species	Cultivar, Variety or Subspecies	Common Name	Intolerant of reactive clay soils	Intolerant of drought	Weed or inappropriate species	Very slow growing	Invasive root system	Produce suckers	Exceptionally large growing species	Thorns or spines	Highly allergenic
<i>Acacia</i>	<i>melanoxydon</i>		Blackwood	✓								
<i>Arbutus</i>	<i>unedo</i>		Irish Strawberry Tree				✓					
<i>Betula</i>	<i>pendula</i>		Silver Birch	✓	✓							
<i>Bursaria</i>	<i>spinosa</i>	'Macrophylla'	Sweet Bursaria								✓	
<i>Cinnamomum</i>	<i>camphora</i>		Camphor Laurel			✓		✓				
<i>Eucalyptus</i>	<i>leucoxydon</i>	ssp conata	Yellow Gum							✓		
<i>Eucalyptus</i>	<i>camaldulensis</i>		River Red Gum							✓		
<i>Fraxinus</i>	<i>excelsior</i>	'Aurea'	Golden Ash			✓		✓				
<i>Gleditsia</i>	<i>triacanthos</i>		Honey-Locust			✓					✓	
<i>Lagunaria</i>	<i>patersonii</i>		Norfolk Island Hibiscus			✓						✓
<i>Malus</i>	<i>floribunda</i>		Japanese Crab Apple	✓								
<i>Melaleuca</i>	<i>armillaris</i>		Bracelet Honey Myrtle					✓				
<i>Melaleuca</i>	<i>linariifolia</i>		Snow in Summer					✓				
<i>Melaleuca</i>	<i>stypheoloides</i>		Prickly Paperbark					✓				
<i>Melaleuca</i>	<i>quiquenervia</i>		Broad-leaveds Paperbark			✓				✓		
<i>Pistachio</i>	<i>chinensis</i>		Chinese Pistachio	✓								
<i>Robinia</i>	<i>pseudoacacia</i>	'Frisia'	False Acacia					✓	✓			
<i>Robinia</i>	<i>pseudoacacia</i>		False Acacia						✓			
<i>Salix</i>	<i>spp.</i>		Willow			✓						
<i>Schinus</i>	<i>spp.</i>		Peppercorn			✓						
<i>Tilia</i>	<i>cordata</i>		Small-leaved Linden		✓							
<i>Ulmus</i>	<i>glabra</i>	'Lutescens'	Golden Wynch Elm			✓						

## Appendix 03 - Installation Notes

### Stock Quality

Generally all street tree stock must be minimum:

- 1.8m tall.
- 25mm calliper at 300mm high.
- Supplied in a 40cm / 45lt bag.

All trees shall be supplied from a Council approved nursery. The trees must have been grown exposed and have been hardened off in the open, be true to species and be the best of their respective kinds. For each tree the canopy and root system must be proportionate to each other and the nominated container size. Each tree is to display a tapered trunk and be self supporting.

The supplier must ensure that all trees are free of pests, diseases and pathogens, free of scarring, damaged leaders, abrasions, disfigured knots and fresh cuts of limbs that have not been callused. All trees are to show a vigorous central leader, open branching framework and have well formed open 'V' crotches. Trees must be well rooted with well formed sturdy limbs and trunk. All trees are to be free of root circling, 'J' roots and have all dead wood and branches removed.

### Tree Placement

#### Naturestrips

Street trees will typically be planted at a minimum density of one tree per property, or at a density suitable to the particular street environment. Wider allotments may accommodate planting with more than one tree. The location of services in the street reserve may not allow trees to be planted at all.

#### Median Plantings

Trees will be planted as a single row on narrow medians. The style of housing and existing planting may determine the planting arrangement on wide medians. In areas where an informal style is suitable, trees may be staggered, grouped or planted at irregular spacings.

### Road Cut-Outs

Trees will be planted in road cut-outs in streets with no nature or median strips or where these are too narrow for planting. The density of planting will vary depending on the width of the street and other factors such as the demand, and availability of on-street car parking.

### Path Cut-Outs

Trees will be planted in path cut outs in streets where footpaths are fully paved. The density of planting will vary depending on the width of the footpath and other factors such as the density of tree planting in private gardens.

### Roundabouts

Only trees with clear trunks will be planted in roundabouts. The only other planting considered in roundabouts will be groundcover plants.

### Water Sensitive Urban Design

Street trees may form part of a Water Sensitive Urban Design treatment where they are a component of a complete or whole of street design solution of a major project.





## Appendix 04 - Maintenance Notes

### Maintenance Objectives

The City of Maribyrnong maintains 27,000 street trees and aims to increase that number to more than 40,000 by 2023. Most trees growing in naturestrips, footpaths and roadways belong to the City of Maribyrnong. Council has the responsibility of managing and maintaining these trees in a healthy and safe condition.

The provision and maintenance of street trees is important to the Maribyrnong community.

**The Maribyrnong City Council – 2012 Annual Community Survey** reported:

*“The importance of the provision and maintenance of street trees increased to its highest recorded level, ranking the service 18<sup>th</sup> in 2012, up a few places on its ranking of 23<sup>rd</sup> on 2011.”*

*“Satisfaction with the provision and maintenance of street trees increased measurably in 2012, up 9.5% to 6.68, a level of satisfaction best categorised as “good”.*

Also the four highest ranked issues from respondents directly related to street tree maintenance.

### Establishment Period

Each newly planted tree will be maintained, including watering, for a period of two years to ensure it is fully established before being placed on Council's cyclic maintenance program.

### Maintenance Actions

#### Watering

Street trees will be watered for two years following their installation, sufficient to ensure their establishment and healthy and vigorous growth.

#### Mulching

All street trees will have a mulch ring of 75mm depth and clear of the trunk maintained throughout the two year establishment period.

### Pruning

Street tree pruning will occur:

- To ensure long-term structure and form.
- Where trees encroach upon private property.
- Where trees are obstructing footpaths, bicycle paths, roads or public lighting.
- Where trees are obstructing vehicle access to public areas.
- Where trees are obscuring traffic signage, compromising safe sight lines or reducing visibility at intersections.
- To provide for clearance requirements around overhead power lines.

Tree pruning is conducted as part of Council's routine maintenance program. Pruning is undertaken to encourage healthy growth and branching structure, to maintain sight lines and to meet a range of clearance requirements.

Trees will not be pruned for the following reasons:

- To preserve or create views
- To reduce shade
- To reduce leaf litter
- To discourage roosting birds or bats

If a resident or property owner wishes a Council-owned tree be pruned, the resident should request Council to provide the service. If a resident or property owner damages a Council tree, makes the tree structurally unsound or reduces the amenity value of the tree, Council may seek reimbursement for all remedial action and for the lost amenity value of the tree.

The work standard for pruning will be **AS4373 2007, Pruning of Amenity Trees**.

### Fertilising

Street trees will be fertilised sufficiently throughout the two year establishment period to ensure their establishment, and healthy and vigorous growth.

## Appendix 05 - Assessing Tree Condition

### Pest & Disease

All street trees will be monitored and treated for pests and disease throughout the establishment period and cyclical maintenance thereafter.

### Reactive Maintenance

Council responds to instances which require maintenance or remedial work on a priority basis as assessed by Council's Arborist. These are instances when a street tree may need maintenance outside of the normal cyclic program such as storm damage.

### Root Control

Tree root management works, including root pruning and installation of root barriers, are occasionally required to be performed on street trees. This work may be required for risk management, to maintain public safety and contain tree root growth where necessary to prevent damage to property, roads, kerb and channel and footpaths. Council will also consider replacement or reinforcement of paths, road, kerb and channel in the management of tree roots.

Root pruning of street trees will not be permitted without the approval of a Council's Arborist.

### Monitoring

The long term success of the Strategy and its benefit to future generations of the community is the continual monitoring and assessment of the performance of Maribyrnong's street trees. Data for planning and assessment purposes will be collected as part of each tree's maintenance cycle and during project specific audits.

### Useful Life Expectancy

The method for assessing the condition of a street tree will be Useful Life Expectancy (ULE)

#### Typical ULE Characteristics

<1 year

Tree may be dead or mostly dead. Tree may exhibit major structural faults. Tree may be an imminent failure hazard.

1-5 years

Tree is exhibiting severe chronic decline. Crown is likely to be less than 50% typical density. Crown may be mostly epicormic growth. Dieback of large limbs is common (large deadwood may have been pruned out).

6-10 years

Tree is exhibiting chronic decline. Crown density will be less than typical and epicormic growth is likely to present. The crown may still be mostly entire, but some dieback is likely to be evident. Dieback may include large limbs.

11-20 years

Tree not showing symptoms of chronic decline, but growth characteristics are likely to be reduced (bud development, extension growth etc). Tree may be over-mature and senescing.

21-30 years

Trees displaying normal growth characteristics. Tree may be growing in restricted environment (eg. Streetscapes) or may be in late maturity.

31-60 years

Semi-mature and mature trees exhibiting normal growth characteristics. Juvenile trees in streetscapes.

61+ years

Juvenile and semi-mature trees exhibiting normal growth characteristics in parks or open space.