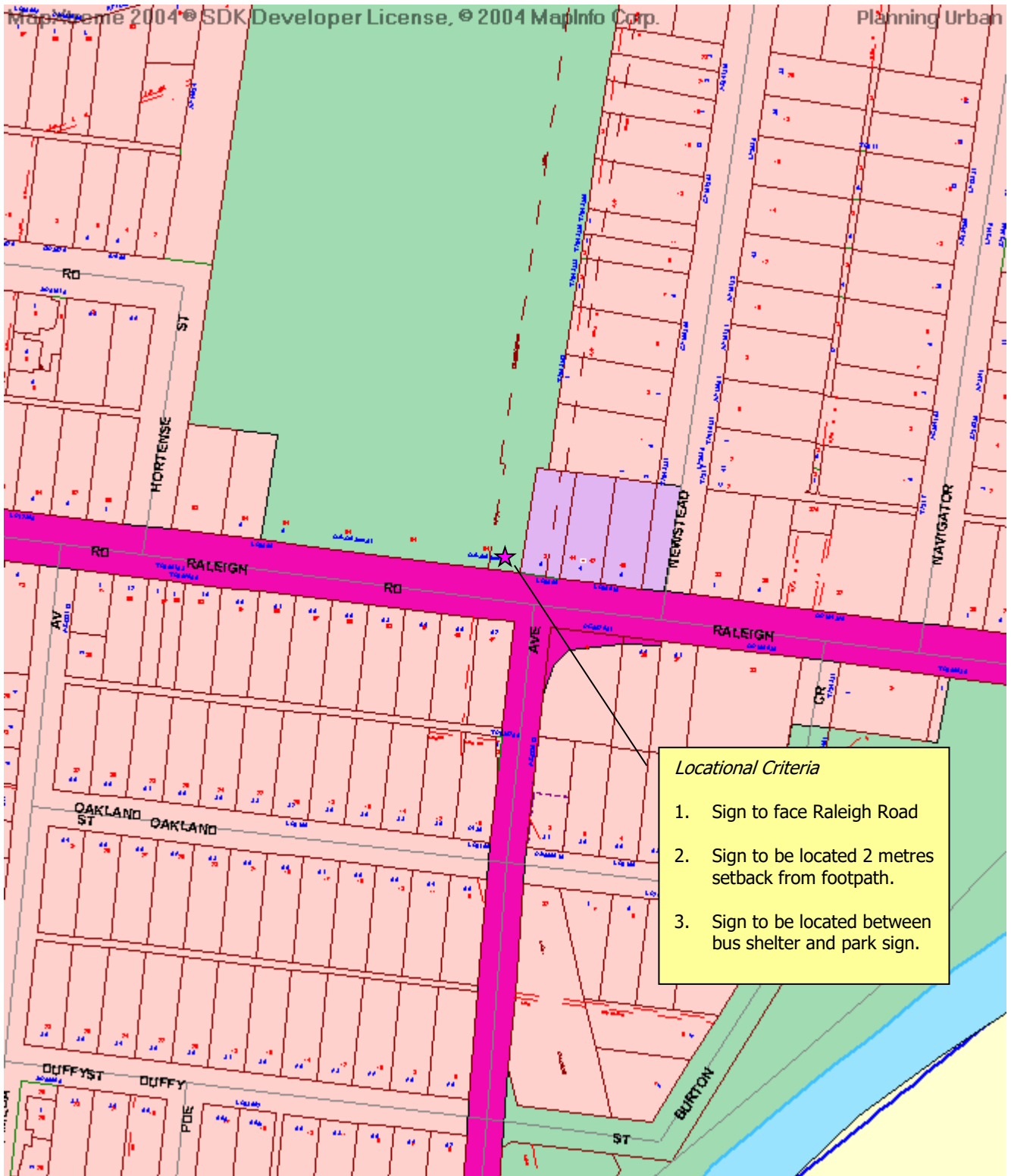


Site 2 - McDonald Reserve

Map



Map Zoom: 415.6 m

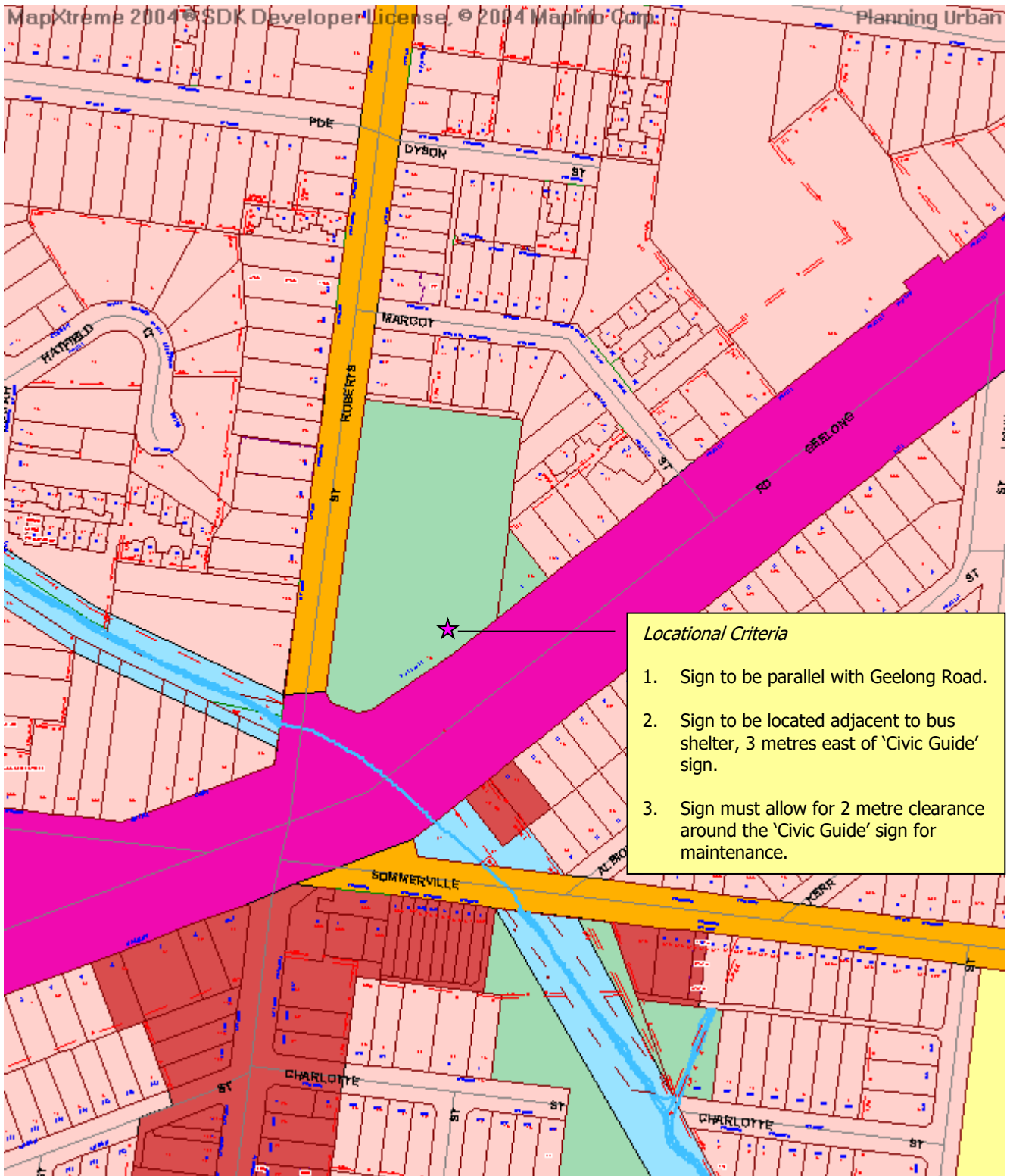
Created by planning on Tuesday, 4 July 2006

Disclaimer

The State of Victoria and the Maribyrnong City Council do not warrant the accuracy or completeness of information in this product and any person using or relying upon such information does so on the basis that the State of Victoria and the Maribyrnong City Council shall bear no responsibility or liability whatsoever for any errors, faults, defects or omissions in the information.

Site 3 - Bassett Reserve

Map



Map Zoom: 498.7 m

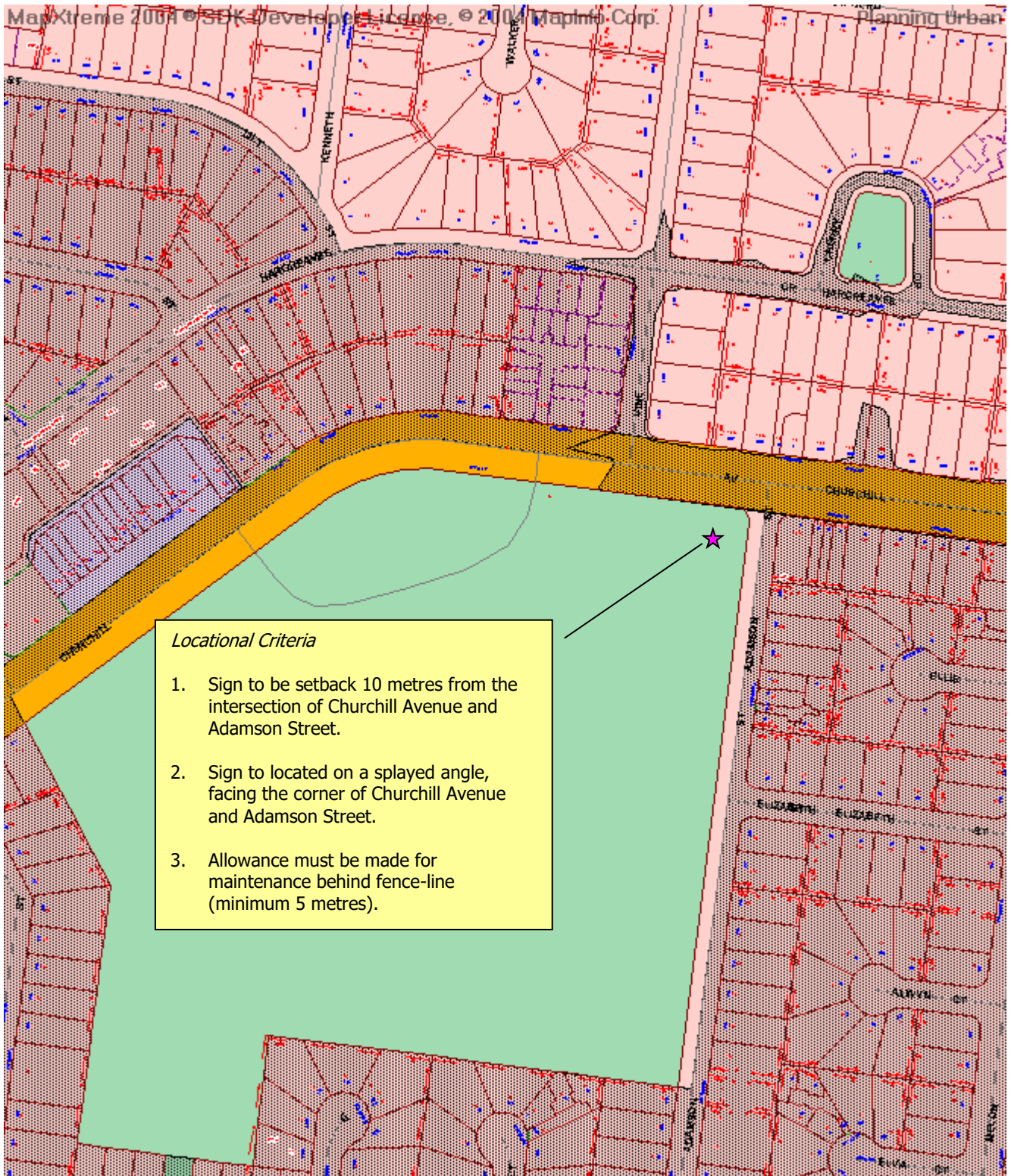
Created by planning on Tuesday, 4 July 2006

Disclaimer

The State of Victoria and the Maribyrnong City Council do not warrant the accuracy or completeness of information in this product and any person using or relying upon such information does so on the basis that the State of Victoria and the Maribyrnong City Council shall bear no responsibility or liability whatsoever for any errors, faults, defects or omissions in the information.

Site 4 - Braybrook Park

Map



Map Zoom: 519.1 m

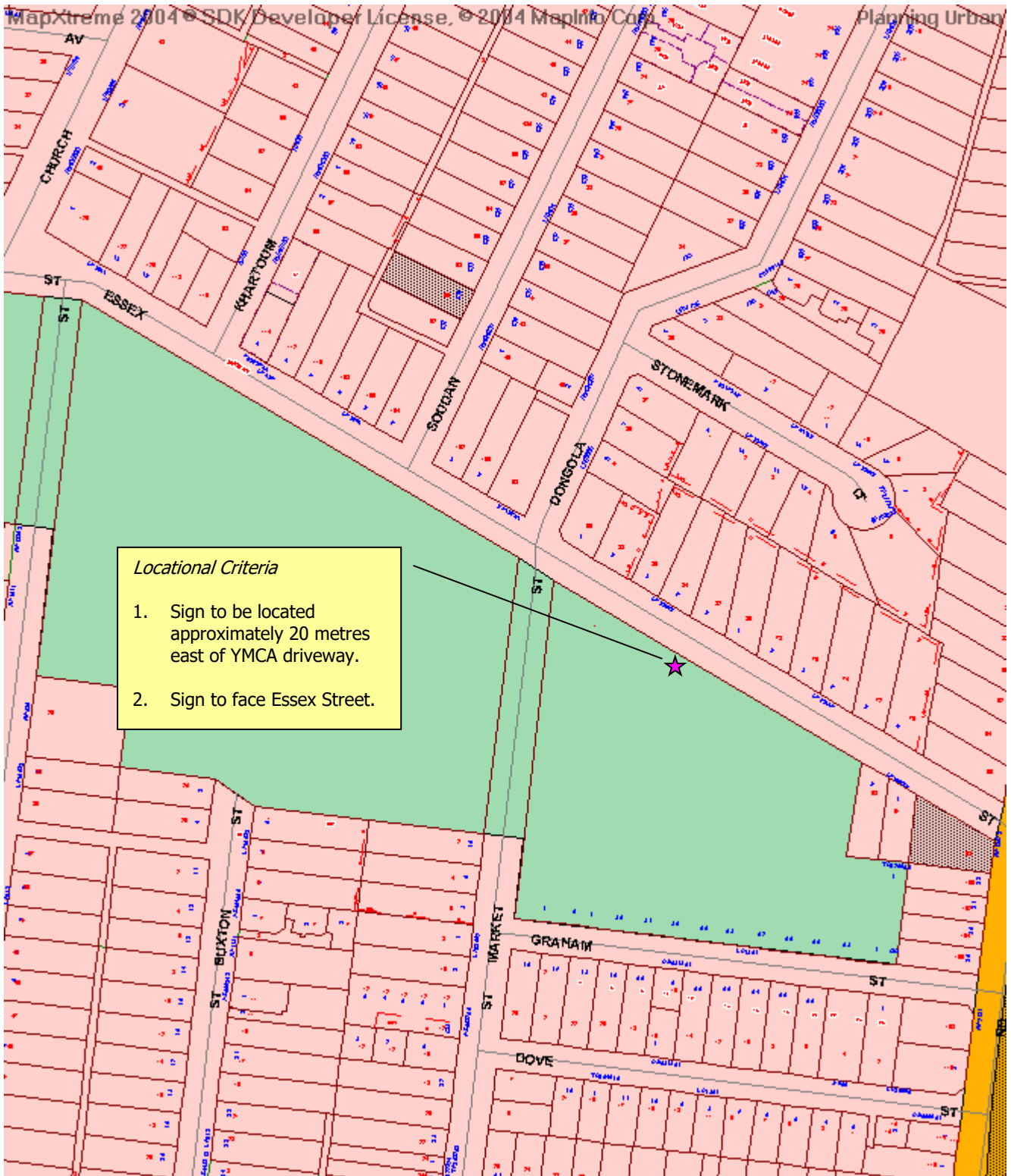
Created by planning on Tuesday, 4 July 2006

Disclaimer

The State of Victoria and the Maribyrnong City Council do not warrant the accuracy or completeness of information in this product and any person using or relying upon such information does so on the basis that the State of Victoria and the Maribyrnong City Council shall bear no responsibility or liability whatsoever for any errors, faults, defects or omissions in the information.

Site 5 - Barrett Reserve

Map



Map Zoom: 391.2 m

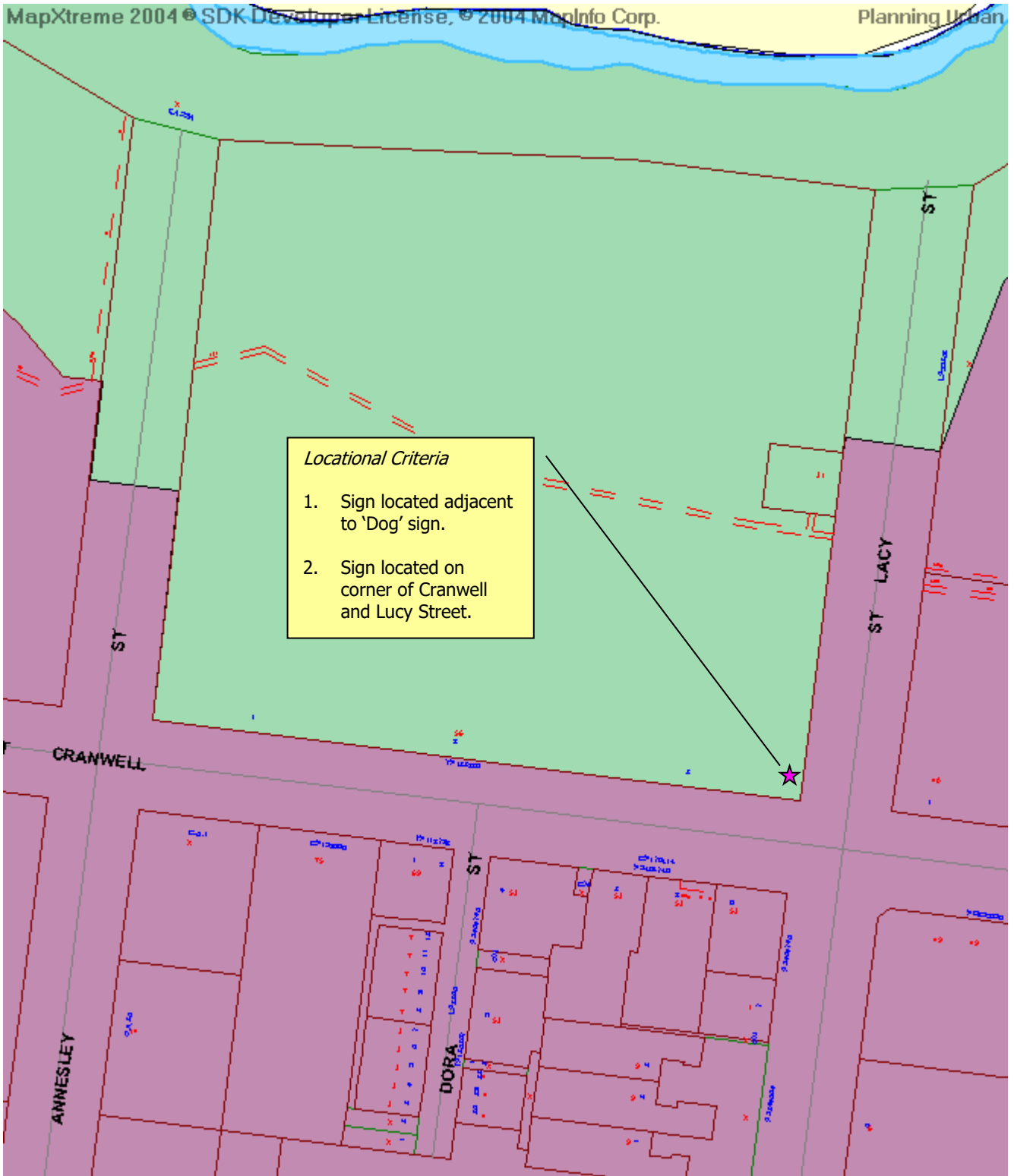
Created by planning on Tuesday, 4 July 2006

Disclaimer

The State of Victoria and the Maribyrnong City Council do not warrant the accuracy or completeness of information in this product and any person using or relying upon such information does so on the basis that the State of Victoria and the Maribyrnong City Council shall bear no responsibility or liability whatsoever for any errors, faults, defects or omissions in the information.

Site 6 - Cranwell Park

Map



Map Zoom: 331 m

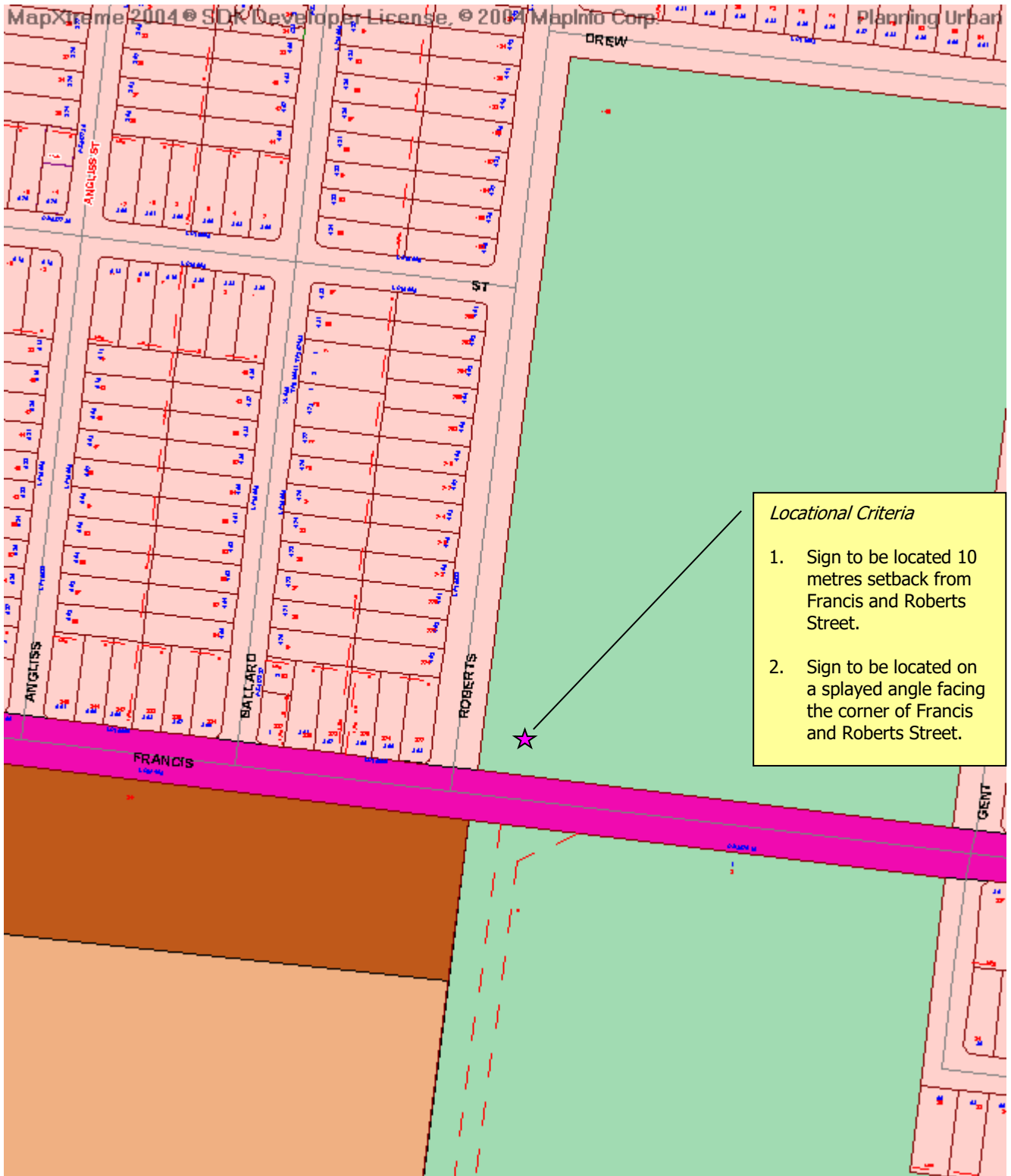
Created by planning on Tuesday, 4 July 2006

Disclaimer

The State of Victoria and the Maribyrnong City Council do not warrant the accuracy or completeness of information in this product and any person using or relying upon such information does so on the basis that the State of Victoria and the Maribyrnong City Council shall bear no responsibility or liability whatsoever for any errors, faults, defects or omissions in the information.

Site 7 - Angliss Reserve

Map



Map Zoom: 421 m

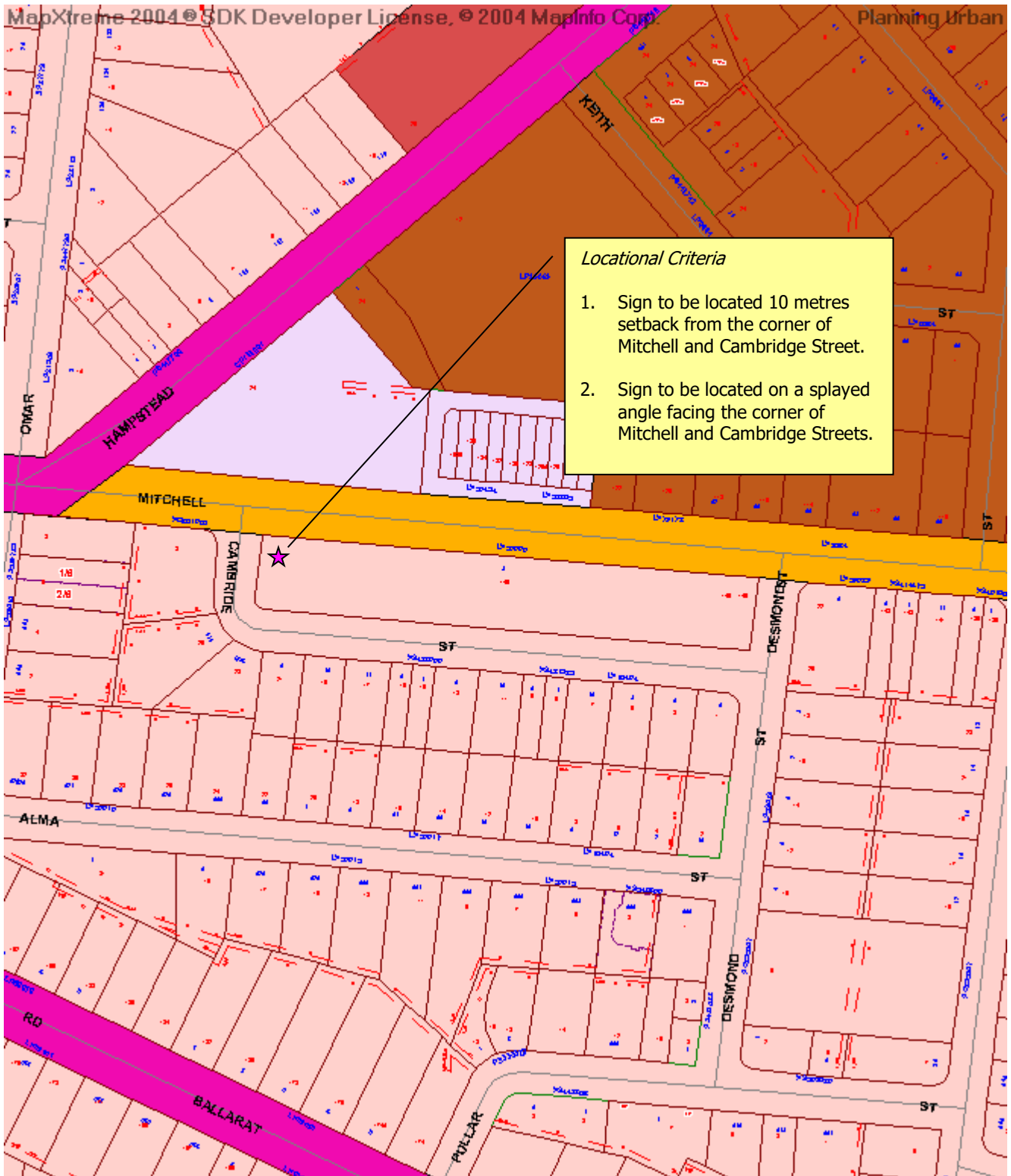
Created by planning on Tuesday, 4 July 2006

Disclaimer

The State of Victoria and the Maribyrnong City Council do not warrant the accuracy or completeness of information in this product and any person using or relying upon such information does so on the basis that the State of Victoria and the Maribyrnong City Council shall bear no responsibility or liability whatsoever for any errors, faults, defects or omissions in the information.

Site 8 - Cambridge Reserve

Map



Map Zoom: 357.7 m

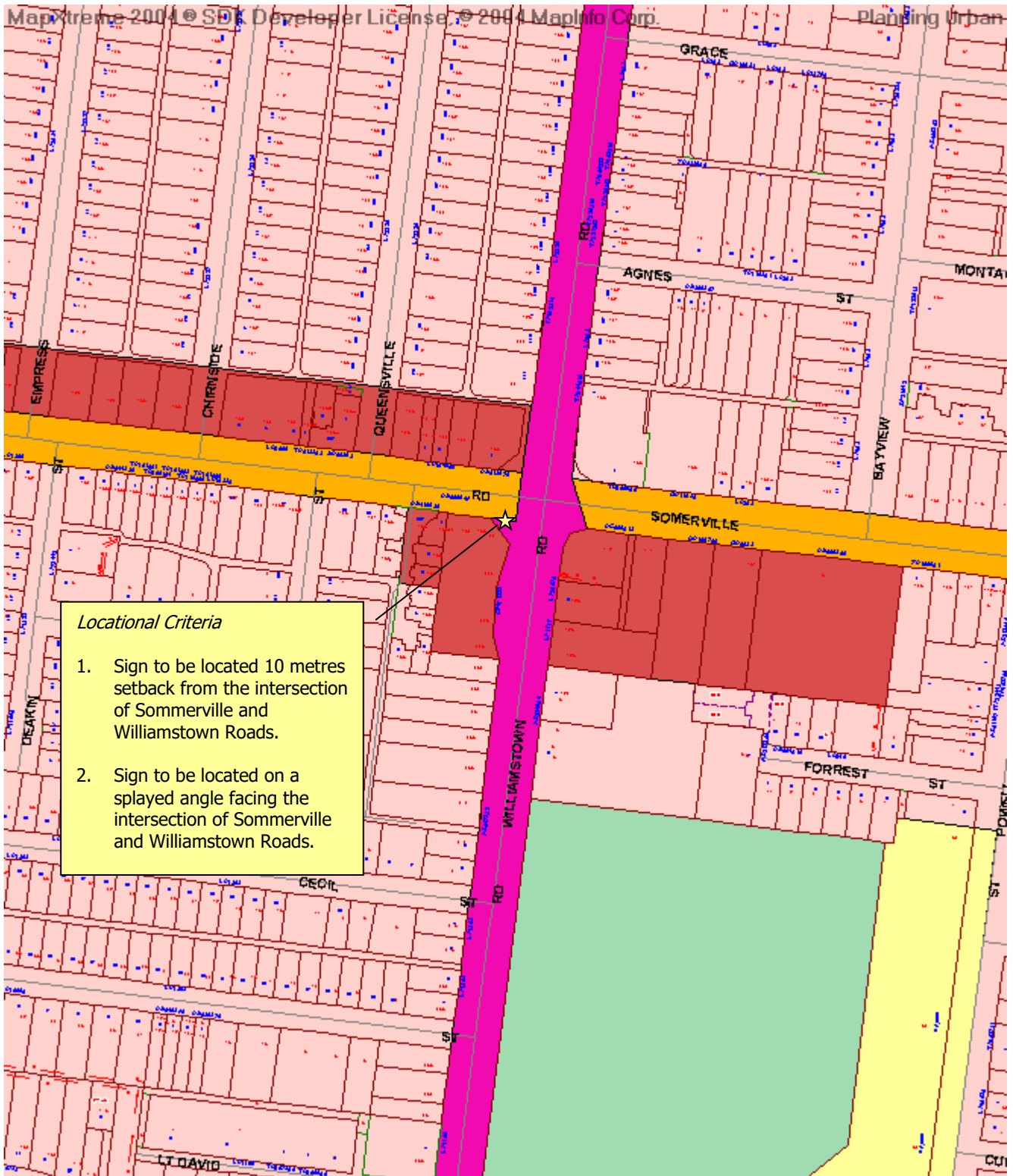
Created by planning on Tuesday, 4 July 2006

Disclaimer

The State of Victoria and the Maribyrnong City Council do not warrant the accuracy or completeness of information in this product and any person using or relying upon such information does so on the basis that the State of Victoria and the Maribyrnong City Council shall bear no responsibility or liability whatsoever for any errors, faults, defects or omissions in the information.

Site 10 - Somerville and Williamstown Road

Map



Map Zoom: 428.2 m

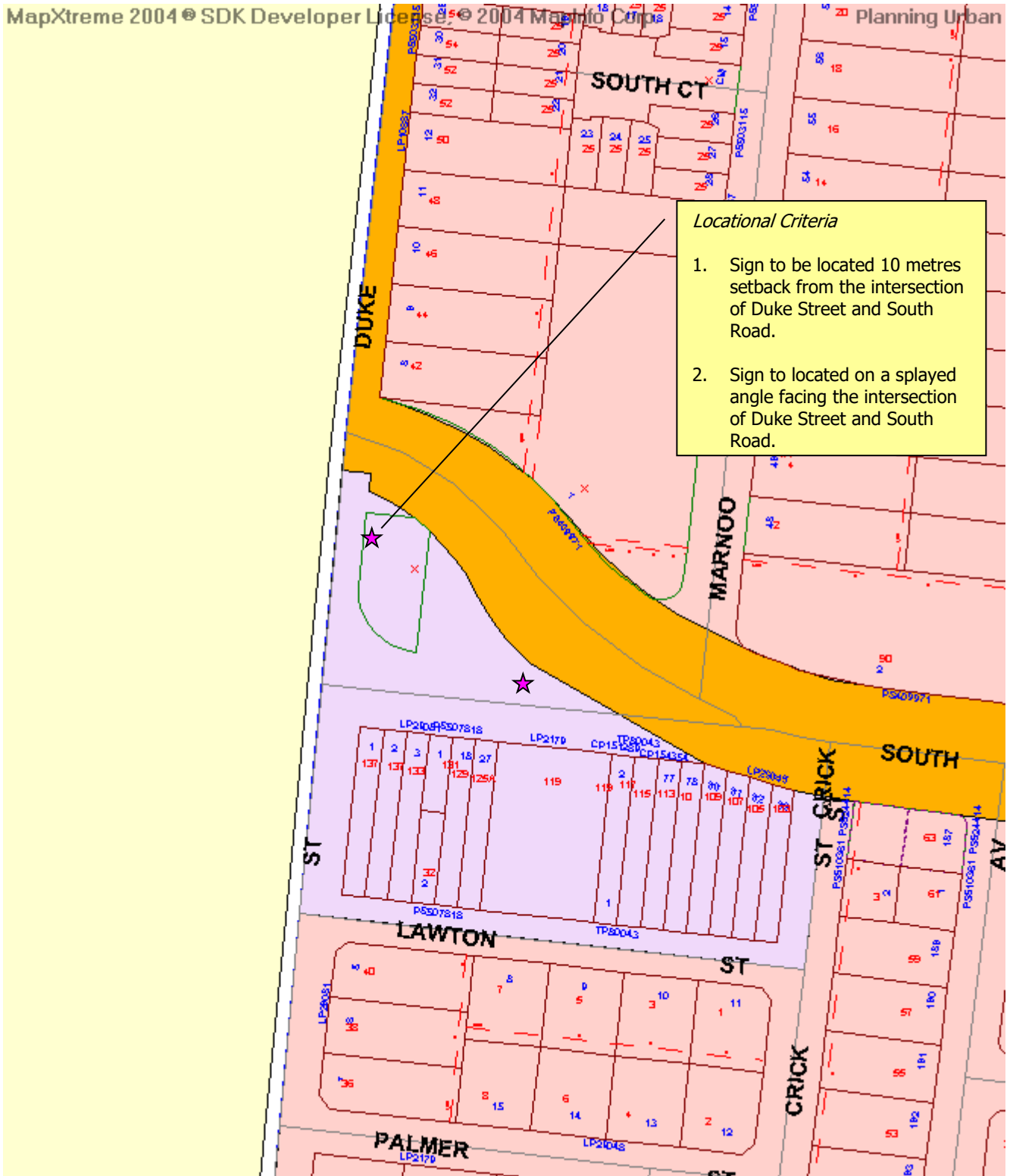
Created by planning on Tuesday, 4 July 2006

Disclaimer

The State of Victoria and the Maribyrnong City Council do not warrant the accuracy or completeness of information in this product and any person using or relying upon such information does so on the basis that the State of Victoria and the Maribyrnong City Council shall bear no responsibility or liability whatsoever for any errors, faults, defects or omissions in the information.

Site 11 - Island site (South Road and Duke Street)

Map



Map Zoom: 265.6 m

Created by planning on Wednesday, 5 July 2006

Disclaimer

The State of Victoria and the Maribyrnong City Council do not warrant the accuracy or completeness of information in this product and any person using or relying upon such information does so on the basis that the State of Victoria and the Maribyrnong City Council shall bear no responsibility or liability whatsoever for any errors, faults, defects or omissions in the information.