

**MARIBYRNONG PLANNING SCHEME**

**Incorporated Document**

**‘Business Identification Signage, 72 – 74 Napier Street, Footscray, September 2013’**

**This document is an incorporated document in the Maribyrnong Planning Scheme pursuant to Section 6(2)(j) of the Planning and Environment Act 1987**

## **Maribyrnong Planning Scheme**

### **Incorporated Document**

**‘Business Identification Signage, 72-74 Napier Street, September 2013’**

## **INTRODUCTION**

This document is an Incorporated Document in the Schedule to Clause 81 of the Maribyrnong Planning Scheme and gives effect to a specific site control for the purpose of Clause 52.03 of the Scheme.

The land identified in the document may be developed in accordance with the specific controls contained in the document. The specific controls may exclude other controls of the Scheme.

If there is any inconsistency between the specific controls and the general provisions of the Scheme, the specific controls will prevail.

## **ADDRESS OF THE LAND**

72 – 74 Napier Street, Footscray (being Lot 1 on Plan of Subdivision 700472E).

## **THIS DOCUMENT ALLOWS**

Despite any provision to the contrary in the Maribyrnong Planning Scheme, this document allows the development of the land for the installation and display of signage, generally in accordance with Development Plans prepared by Premier Graphics, dated 13 June 2013, and described as:

- |                                 |              |
|---------------------------------|--------------|
| • Site Plan                     | 13 June 2013 |
| • Concept Drawings              | Dwg 0 Rev 1  |
| • Construction Concept Drawings | Dwg 1 Rev 1  |
| • Construction Concept Drawings | Dwg 2 Rev 1  |
| • Construction Concept Drawings | Dwg 3 Rev 1  |
| • Construction Concept Drawings | Dwg 4 Rev 1  |
| • Construction Concept Drawings | Dwg 5 Rev 1  |
| • Construction Concept Drawings | Dwg 6 Rev 1  |
| • Construction Concept Drawings | Dwg 7 Rev 1  |
| • Construction Concept Drawings | Dwg 8 Rev 1  |

The Incorporated Plans form part of this document.

**THE FOLLOWING CONDITIONS APPLY TO THIS DOCUMENT**

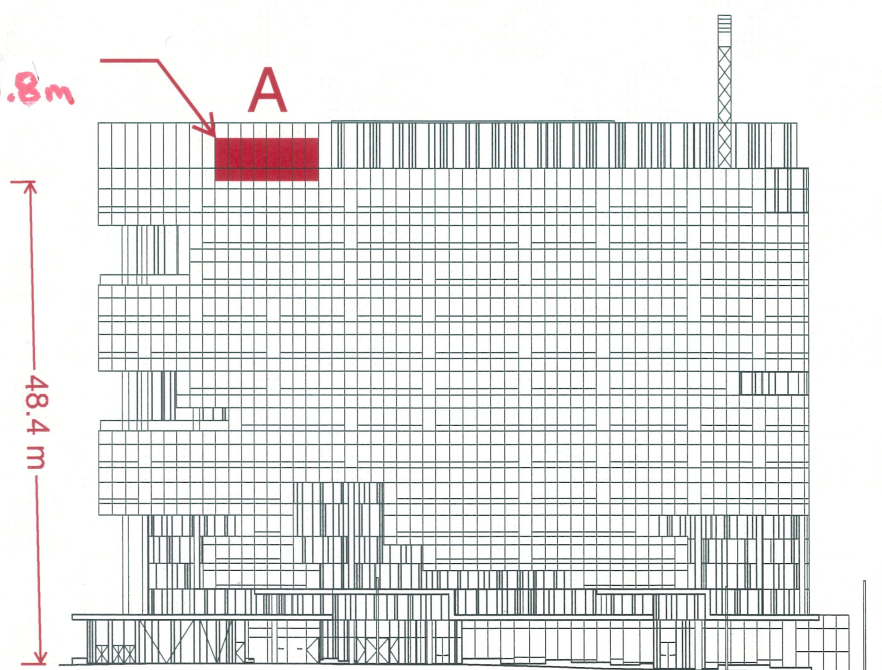
1. The development must be carried out generally in accordance with the incorporated plans endorsed by the Responsible Authority or such modified plans which may be substituted with the consent of the Responsible Authority.
2. The location, size, material of construction, colours, wording and degree of illumination of the signs, must not be altered or modified in any way without the written consent of the Responsible Authority.
3. The signs hereby permitted must not be animated or contain any flashing lights.
4. All signs must be constructed to the satisfaction of the Responsible Authority and maintained to the satisfaction of the Responsible Authority.
5. The signs will expire fifteen (15) years after the approval date or otherwise to the satisfaction of the Responsible Authority which may extend the period if a request is made in writing before the approval expires or within three months afterwards.

**END OF DOCUMENT**

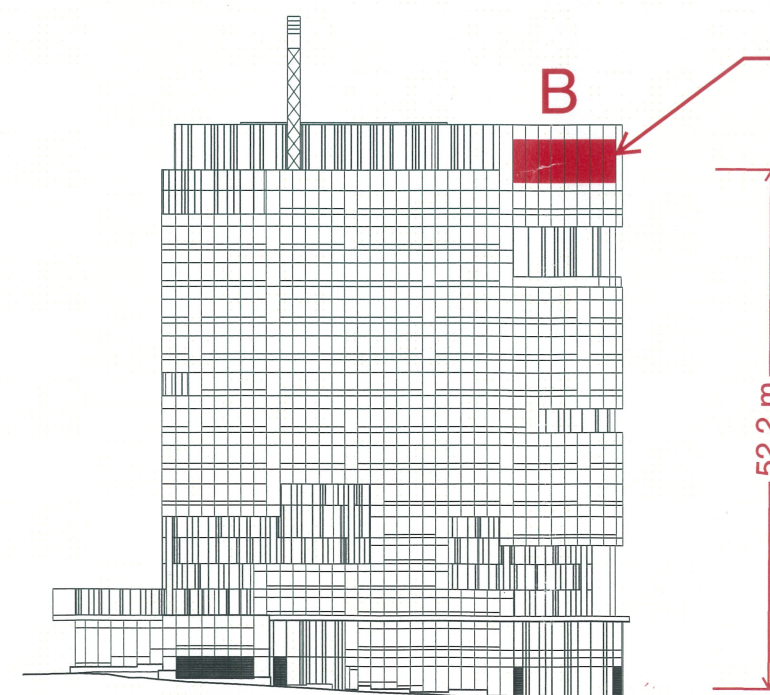




Sign  
12m x 4.8m



Sign  
12m x 4.8m



Proposed State Trustees Signs - Site Plan

13 JUNE 2013





---

## ONE McNAB AVENUE FOOTSCRAY

# CONSTRUCTION SKETCH PLANS & DETAILS

### CONCEPT DRAWINGS

**StateTrustees - 1 McNab Ave, Footscray**

**Dwg: 0.**

**Revision: . 1**

**Date - 13/06/13**

**premiergraphics**  
architectural & environmental signage

© Copyright - These drawings and concepts remain the property of Premier Graphics Pty Ltd.  
They are only to be used for their commissioned purpose and in accordance to the terms of the contract established.  
Unauthorized used of this drawing or concept is strictly prohibited.

Drawn by; KE; .      c o n t a c t

e. sales@premgraph.com.au  
e. accounts@premgraph.com.au  
www.premgraph.com.au

**melbourne**      t. 613 9798 7988  
f. 613 9706 3929  
27 Tower Crt Noble Park 3174 Victoria Australia



3D EXTRUSION

## UNIT DIMENSIONS

### FULLY ILLUMINATED UNIT

Back panel 400mm deep Aluminium tray with internal framework  
PVC Flexface fabric skin for face, illuminates as White  
18mm White Neon lighting elements for longevity

Logo 200mm deep fabricated Aluminium tray  
Digitally printed graphic on illuminated face  
18mm White neon lighting elements for longevity

Letters 200mm deep fabricated Aluminium trays - Non illuminated  
70% Black cannot be illuminated - looks Black  
Background would overpower any internal lighting



## CONSTRUCTION CONCEPT DRAWINGS

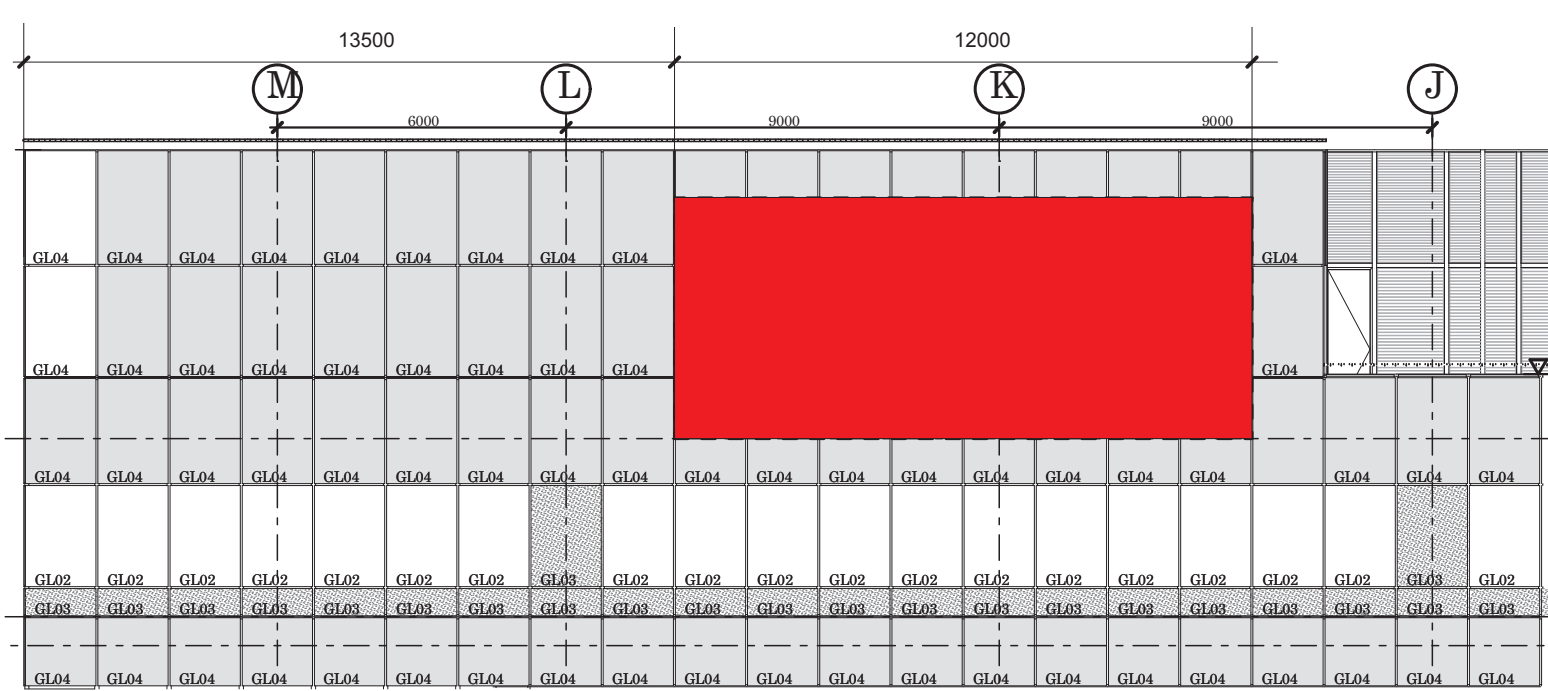
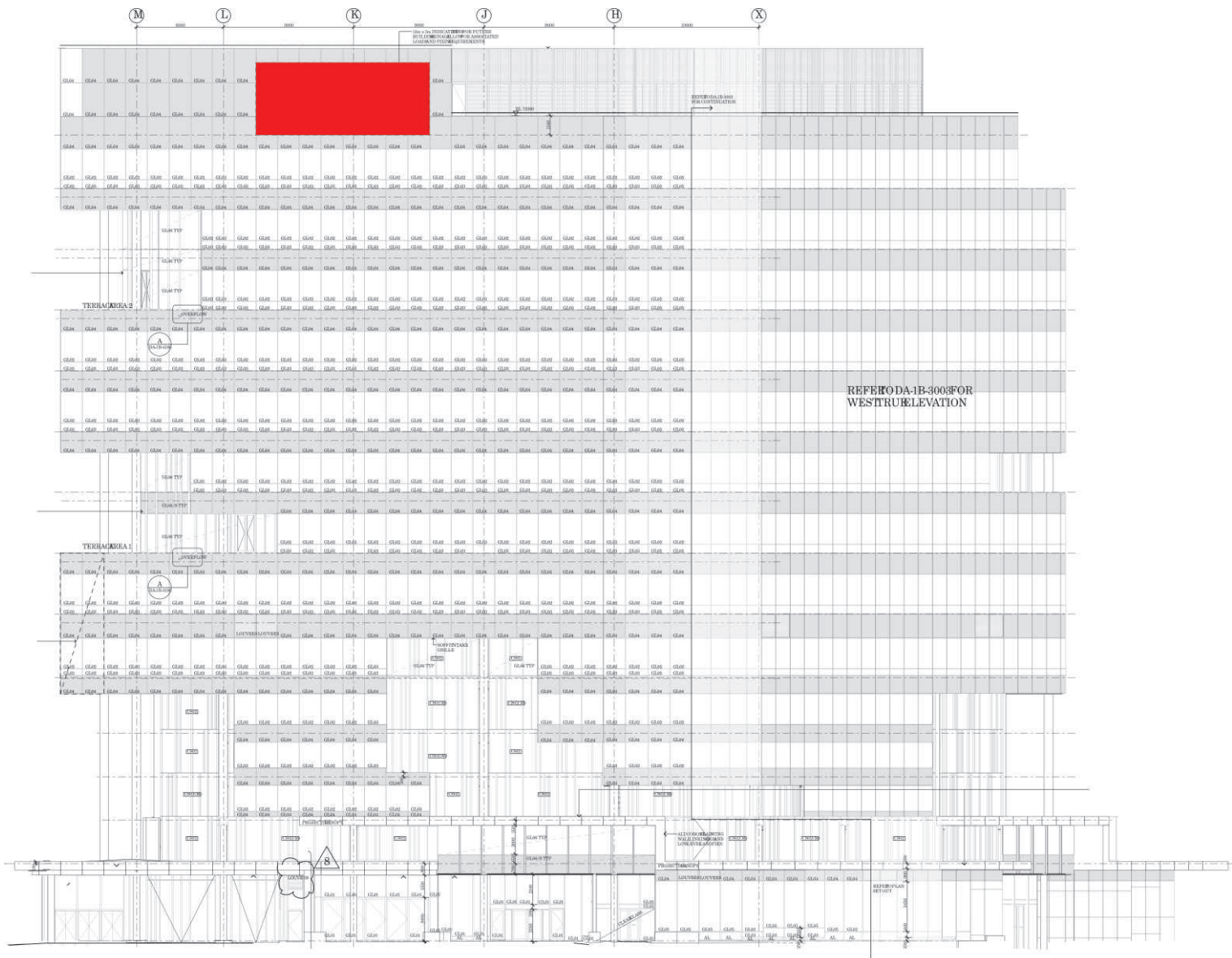
StateTrustees - 1 McNab Ave, Footscray

Dwg: 1.

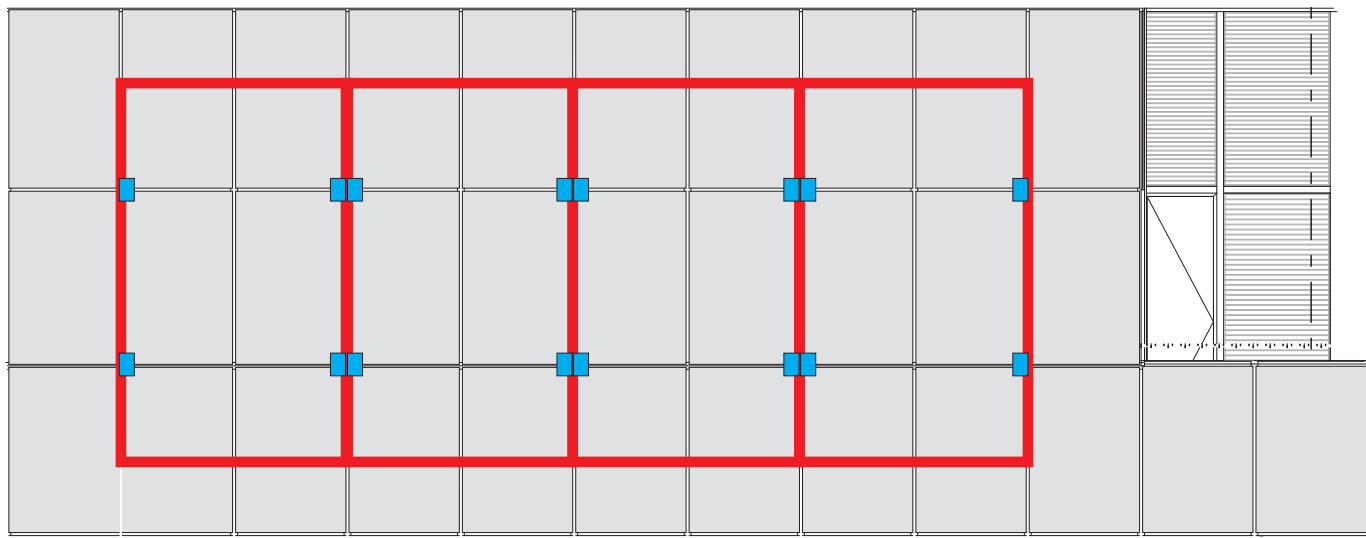
Revision; 0. 1

Date - 2 13/06/13

**premiergraphics**  
architectural & environmental signage



Sign position



Perimeter of Lightbox sections 3000x5000mm

Mounting plate positions - over junctions in glass

Mount plate position

# NORTH ELEVATION

## CONSTRUCTION CONCEPT DRAWINGS

StateTrustees - 1 McNab Ave, Footscray

Dwg: 2.

Revision; . 1

Date - 13/06/13

premiergraphics  
architectural & environmental signage

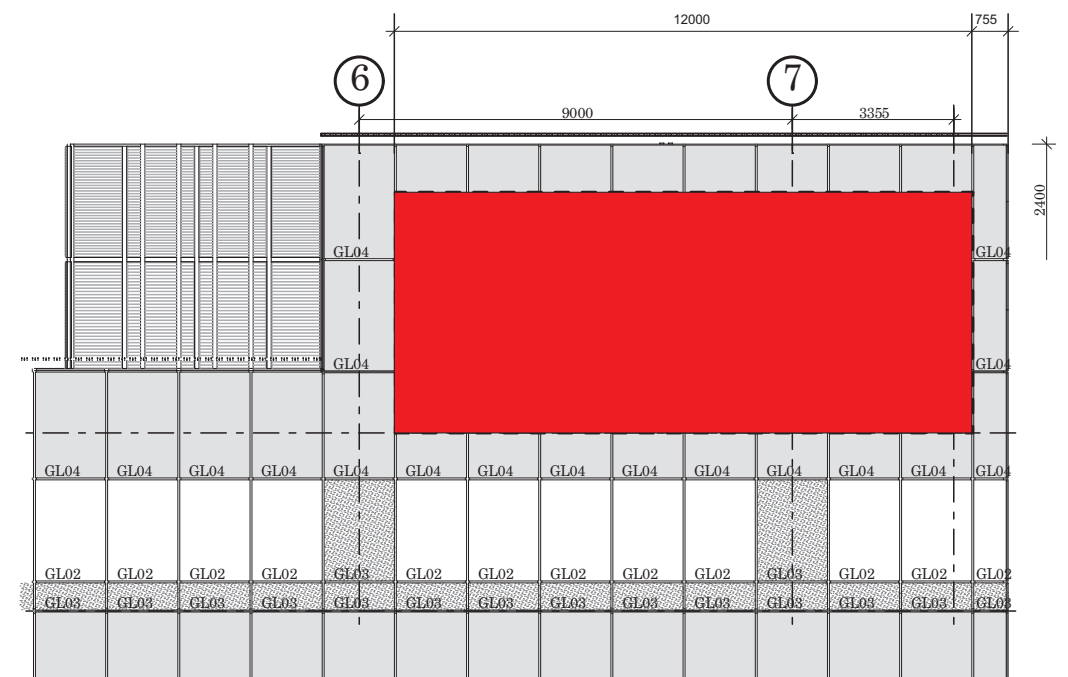
© Copyright - These drawings and concepts remain the property of Premier Graphics Pty Ltd.  
They are only to be used for their commissioned purpose and in accordance to the terms of the contract established.  
Unauthorized used of this drawing or concept is strictly prohibited.

Drawn by; KE; . contact

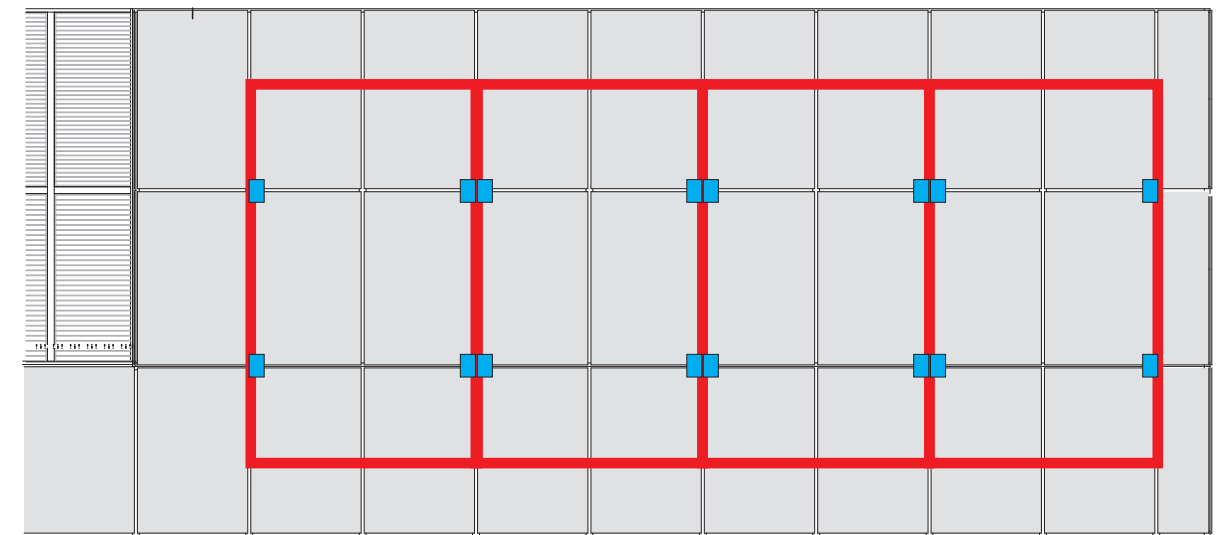
e. sales@premgraph.com.au  
e. accounts@premgraph.com.au  
www.premgraph.com.au

melbourne t. 613 9798 7988  
f. 613 9706 3929  
27 Tower Crt Noble Park 3174 Victoria Australia





Sign position



— Perimeter of Lightbox sections 3000x5000mm

■ Mounting plate positions - over junctions in glass

Mount plate position

# SOUTH ELEVATION

## CONSTRUCTION CONCEPT DRAWINGS

StateTrustees - 1 McNab Ave, Footscray

Dwg: 2.

Revision: . 1

Date - 13/06/13

**premiergraphics**  
architectural & environmental signage

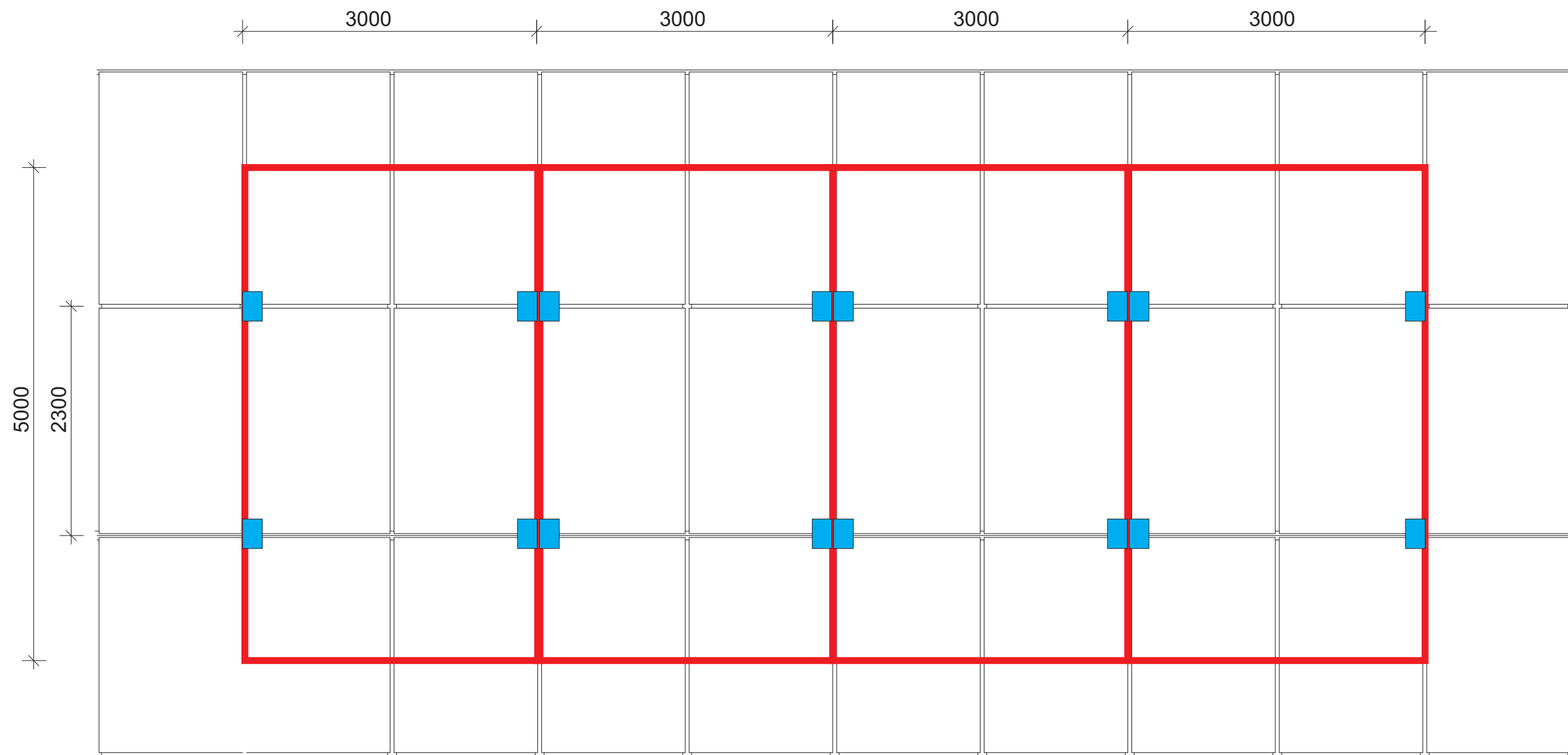
© Copyright - These drawings and concepts remain the property of Premier Graphics Pty Ltd.  
They are only to be used for their commissioned purpose and in accordance to the terms of the contract established.  
Unauthorized used of this drawing or concept is strictly prohibited.

Drawn by; KE: . contact

e. sales@premgraph.com.au  
e. accounts@premgraph.com.au  
www.premgraph.com.au

**melbourne** t. 613 9798 7988  
f. 613 9706 3929  
27 Tower Crt Noble Park 3174 Victoria Australia





- Perimeter of Lightbox sections 3000x5000mm
- Outriggers - 400x400x16mm MS mounting plate positions through junctions in glass  
Lightbox - 200x400x16mm MS mounting plates

## BASEPLATE POSITION

### CONSTRUCTION CONCEPT DRAWINGS

StateTrustees - 1 McNab Ave, Footscray

Dwg:4.

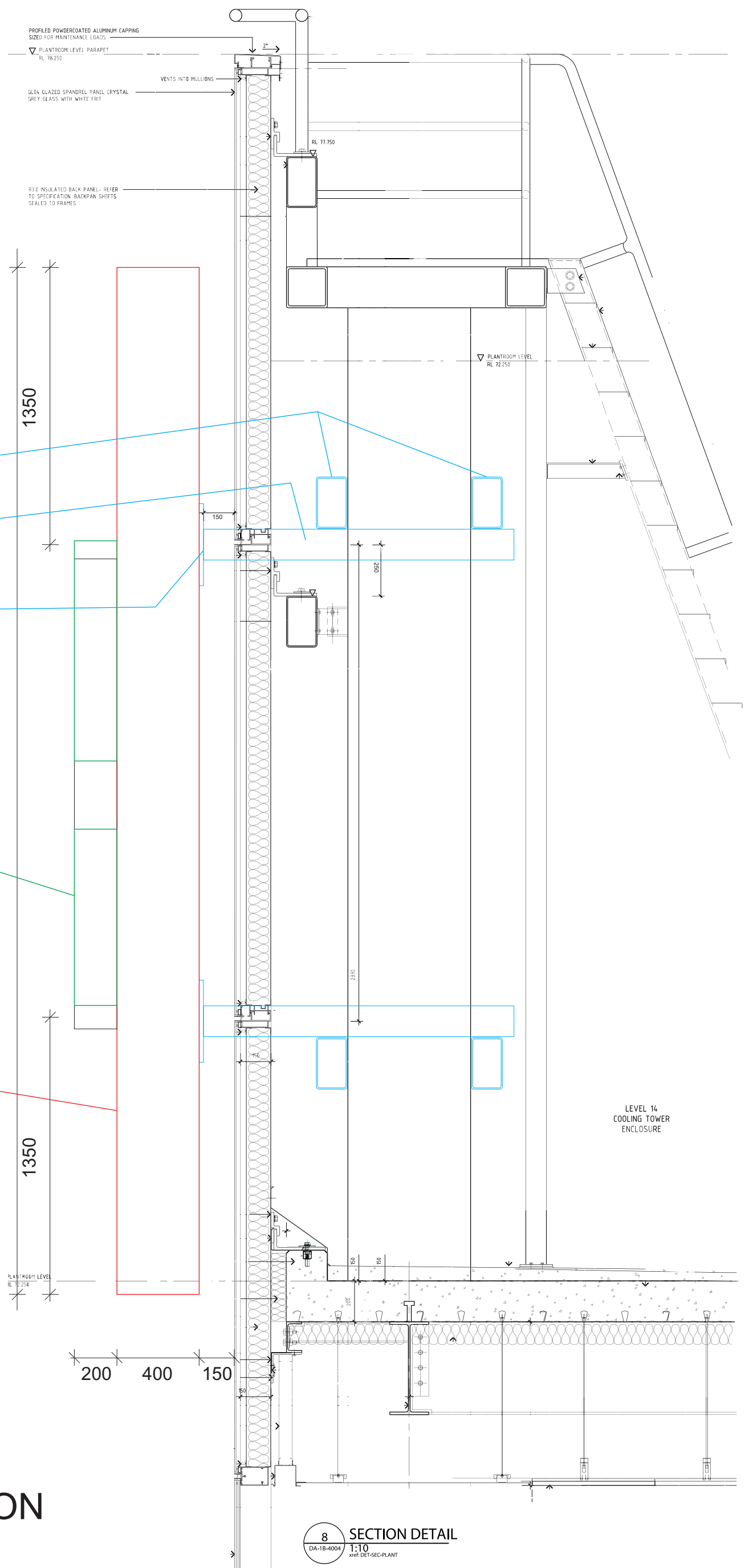
Revision; . 1

Date - 13/06/13

**premiergraphics**  
architectural & environmental signage

Materials finishes to be the same as existing specified steelwork in this area.

## Lightbox structure



# CURTAIN WALL SECTION

## CONSTRUCTION CONCEPT DRAWINGS

**State Trustees - 1 McNab Ave, Footscray**

**Dwg: 5. Revision; . 1 Date - 13/06/13**

y; KE; .    c o n t a c t

**premier**graphics  
architectural & environmental signage

e. [sales@premgraph.com.au](mailto:sales@premgraph.com.au)  
e. [accounts@premgraph.com.au](mailto:accounts@premgraph.com.au)  
[www.premgraph.com.au](http://www.premgraph.com.au)

melbourne t. 613 9798 7988  
f. 613 9706 3929  
27 Tower Crt Noble Park 3174 Victoria Australia



Project

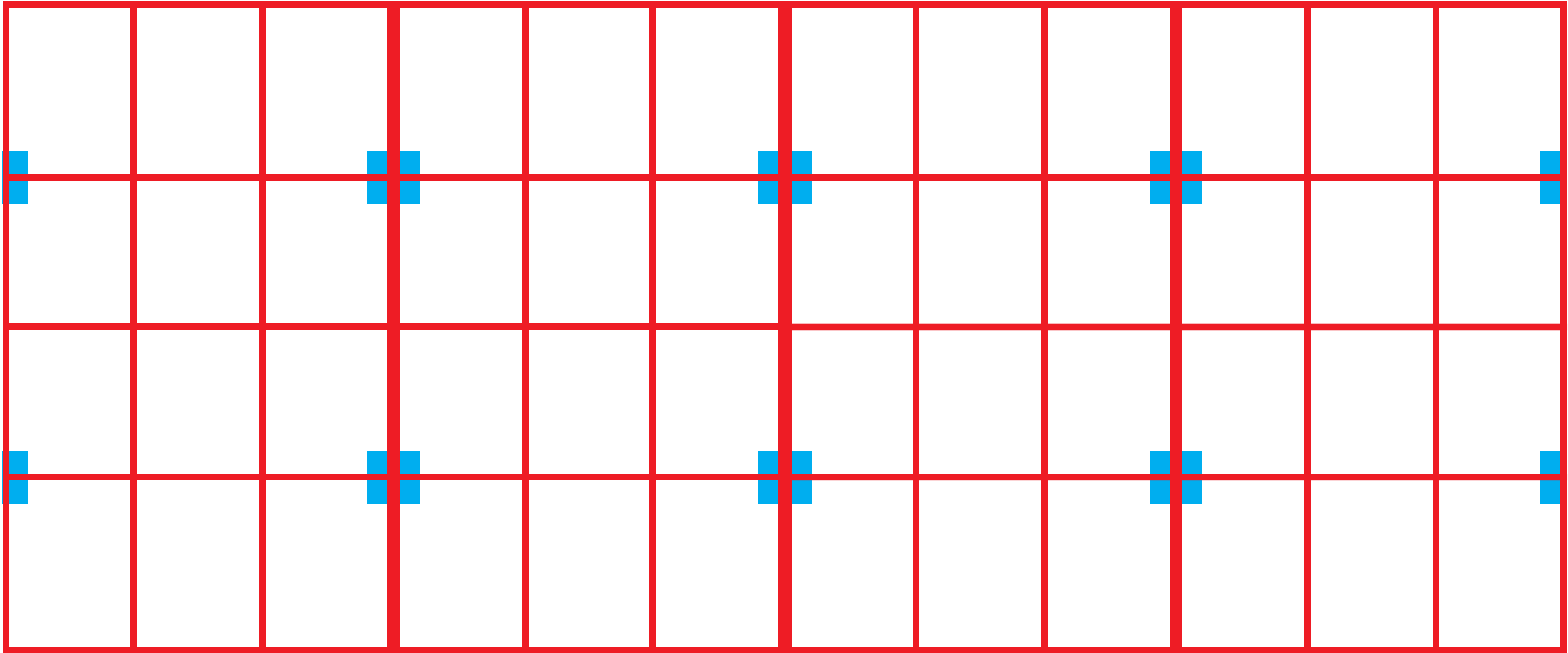
**FCAD**  
**ONE MCNAB AVENUE**  
Footscray

Drawing Title <b>BUILDING 1</b> <b>ROOF SECTIONS SHEET 2</b>			
Date	Scale	Drawing Number	Revision
SEPTEMBER 2011	1:10 @ A0	DA-1B-4161	4
Checked	1:20 @ A2		

# INTERNAL BOX FRAME

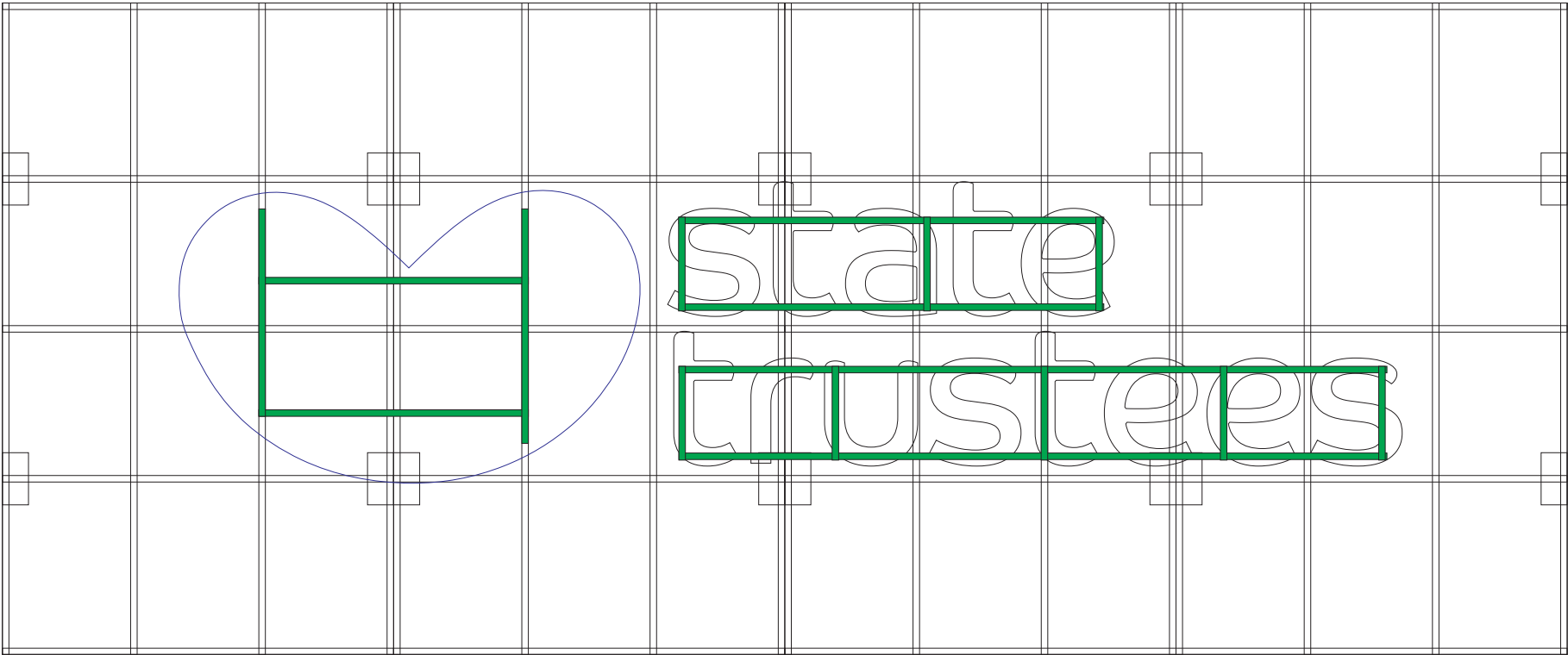
50x3mm Duragal SHS framework  
welded up in 4 panels 3000x5000mm for transport.  
400x400x16mm mount plates welded to back of frame

Each panel lifted up seperately & bolted to in-situ  
mount plates



# 3d LETTER SUPPORT FRAME

Support frame for 3D letters  
50x3mm Duragal frame in front of flexface  
support posts penetrate flexface skin  
& sleeve into outriggers behind.



## CONSTRUCTION CONCEPT DRAWINGS

StateTrustees - 1 McNab Ave, Footscray

Dwg:6.

Revision; . 1

Date - 13/06/13

**premiergraphics**  
architectural & environmental signage

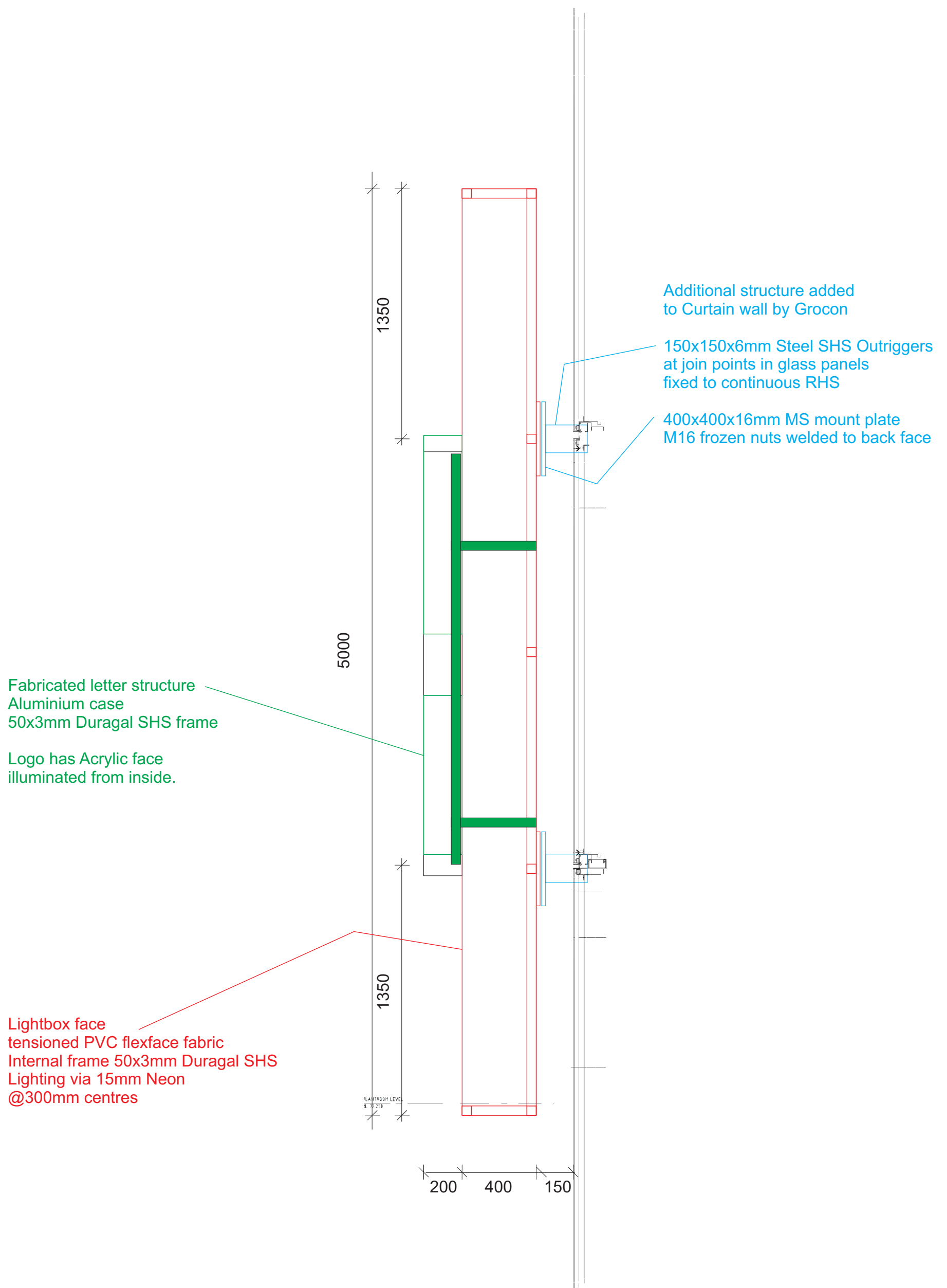
© Copyright - These drawings and concepts remain the property of Premier Graphics Pty Ltd.  
They are only to be used for their commissioned purpose and in accordance to the terms of the contract established.  
Unauthorized used of this drawing or concept is strictly prohibited.

Drawn by; KE; . contact

e. sales@premgraph.com.au  
e. accounts@premgraph.com.au  
www.premgraph.com.au

**melbourne** t. 613 9798 7988  
f. 613 9706 3929  
27 Tower Crt Noble Park 3174 Victoria Australia





## CONSTRUCTION CONCEPT DRAWINGS

StateTrustees - 1 McNab Ave, Footscray

Dwg:7.

Revision;1 Date 13/06/13

**premiergraphics**  
architectural & environmental signage

**OVERALL WEIGHT = 1650kg**

- Steelwork for main box = 625kg
- Alum Composite cladding = 260kg
- Alum flexface frame & Flexface skin = 225kg
- Neon glass, posts & cable = 155kg
- 3D letters, support frame & neon = 380kg

**POWER DRAW = 14 transformers drawing 1.65 amps**

- Each Lightbox section has 3 transformers drawing 1.65 amps, 4 sections
- Each transformer will require its own external single phase power point
- Fabricated logo will have 2 transformers

CONSTRUCTION CONCEPT DRAWINGS

StateTrustees - 1 McNab Ave, Footscray

Dwg8.

Revision; . 1

Date - 13/06/13

**premiergraphics**  
architectural & environmental signage

© Copyright - These drawings and concepts remain the property of Premier Graphics Pty Ltd.  
They are only to be used for their commissioned purpose and in accordance to the terms of the contract established.  
Unauthorized used of this drawing or concept is strictly prohibited.

Drawn by; KE; . contact

**melbourne**  
e. sales@premgraph.com.au t. 613 9798 7988  
e. accounts@premgraph.com.au f. 613 9706 3929  
www.premgraph.com.au 27 Tower Crt Noble Park 3174 Victoria Australia