

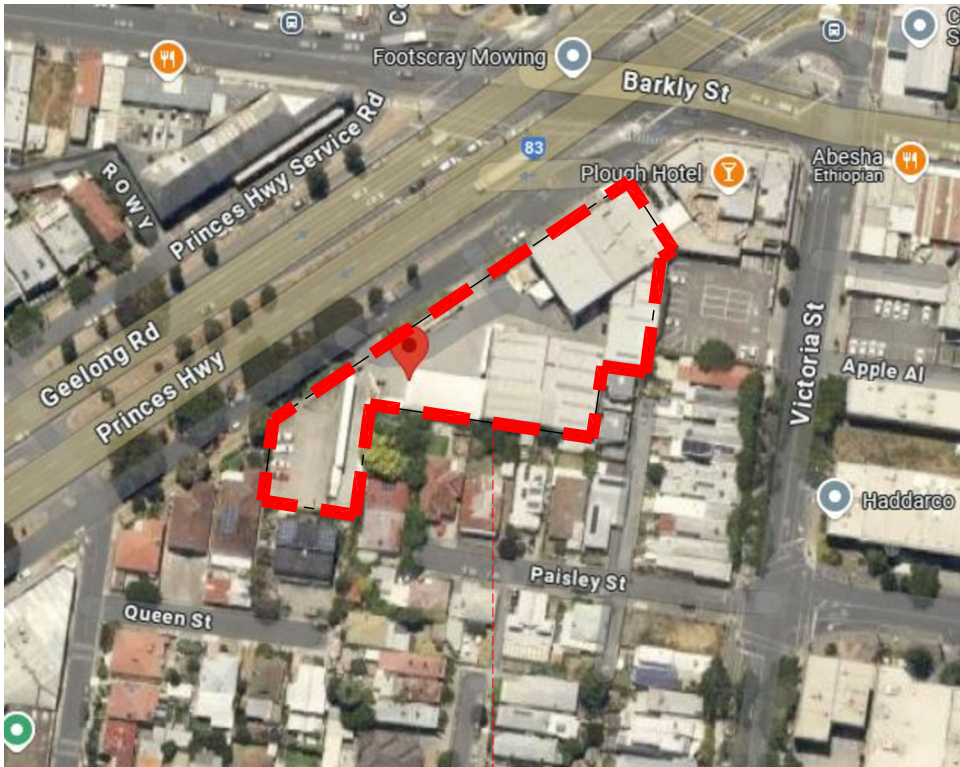
CITY OF MARIBYRNONG
ADVERTISED PLAN



FRONT VIEW - PRINCES HWY
BUILDING ENTRANCE



SIDE VIEW
OFFICE ENTRANCE

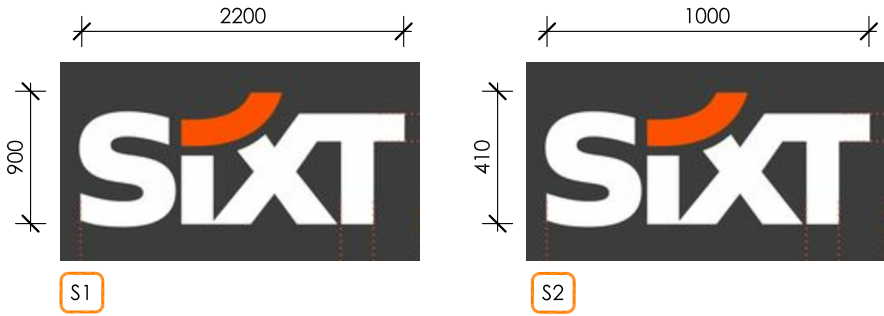


LOCATION PLAN
BRANCH LOCATION

REVISION ISSUE	REVISION DATE	AMENDMENT DETAILS
B	11.06.25	FINAL ISSUE
A	16.05.25	PRELIMINARY LAYOUTS FOR CLIENT APPROVAL

WAIVER- APPLIES TO ALL DRAWINGS

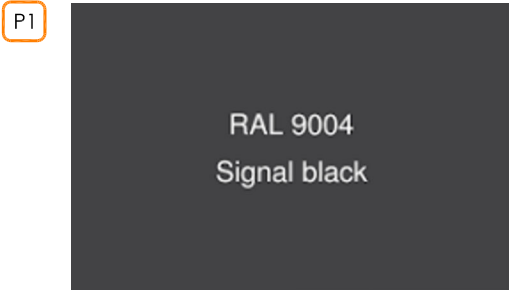
THIS DRAWING PACKAGE REPRESENTS DESIGN INTENT FOR PROPOSED SIXT BRANDING TO NEW FACILITY. ALL BUILDING APPROVALS, SIGNAGE APPROVALS AND ANY OTHER REQUIRED STATUTORY APPROVALS ARE TO BE SOUGHT BY TENANT AND/OR BUILDING OWNER BEFORE COMMENCEMENT OF ANY BUILDING WORKS OR THE LIKE. APPROVAL FROM BUILDING OWNER FOR ANY CHANGES TO EXISTING BASE BUILDING ARE TO BE SOUGHT BY TENANT PRIOR TO COMMENCEMENT OF ANY WORKS AND ANY MAKE GOOD PROVISIONS ARE RESPONSIBILITY OF THE TENANT.



STREETVIEW
BRANCH LOCATION

SIGNAGE LEGEND

- S1 2 OFF
ILLUMINATED 2D OPTIC SIXT SINGLE LETTER LOGO WITH WHITE LETTERS & ORANGE SWOOSH FIXED TO FASCIA. 200mm THK APPROX.
REFER TO BRANCH DESIGN EXTERIOR OF THE SIXT CI EXTERIOR FACADE STANDALONE LOGO.
REFER DRAWING EL01 & EL02
FACADE TO BE PREPARED & RE-PAINTED IN COLOUR: SIGNAL BLACK RAL 9004
(EXTERNAL SIGNAGE MAY BE SUBJECT TO AUTHORITY APPROVAL)
- S2 1 OFF
NON-ILLUMINATED 2D OPTIC SIXT SINGLE LETTER LOGO WITH WHITE LETTERS & ORANGE SWOOSH FIXED TO FASCIA. 6mm THK ALUMINIUM PANELS.
REFER TO BRANCH DESIGN EXTERIOR OF THE SIXT CI EXTERIOR FACADE STANDALONE LOGO.
REFER DRAWING EL01 & EL02
FACADE TO BE PREPARED & RE-PAINTED IN COLOUR: SIGNAL BLACK RAL 9004
(EXTERNAL SIGNAGE MAY BE SUBJECT TO AUTHORITY APPROVAL)
- S3 1 OFF (EXTERNAL SIGNAGE)
NON-ILLUMINATED 2D OPTIC SIXT SINGLE LETTER LOGO WITH BLACK LETTERS & WHITE SWOOSH FIXED TO FASCIA. 6mm THK ORANGE RAL 2017 ACM PANELS.
REFER TO DETAIL DRAWING EL01
(EXTERNAL SIGNAGE MAY BE SUBJECT TO AUTHORITY APPROVAL)



FRONT FACADE OF BUILDING, AWNING ROOF & POSTS TO BE REPAINTED IN COLOUR: SIGNAL BLACK RAL 9004. LOW SHEEN ACRYLIC.

INTERNAL AND EXTERNAL SIGNAGE

ALL INTERNAL BACK WALL LOGO SIGNAGE IS TO BE 2D OPTIC AND IS TO BE ILLUMINATED AS DOCUMENTED IN THE SIXT INTERIORS BRANDING MANUAL.
REFERENCE:
BRANCH DESIGN: BACK WALL STANDARDS
BRANCH DESIGN: SIXT LOGO ILLUMINATED

ALL EXTERNAL SIXT SIGNAGE IS TO BE 2D OPTIC FABRICATED LETTERS U.N.O.
REFER TO INDIVIDUAL PROJECT SITE DRAWINGS WHICH IDENTIFY WHETHER SIGNS ARE INTERNALLY ILLUMINATED OR NON-ILLUMINATED.
ARTWORK TO BE SUPPLIED BY SIXT
SIGNAGE CONTRACTOR TO PROVIDE SHOP DRAWINGS FOR APPROVAL.



34 Princes Street
Hunters Hill, NSW, 2110
+61 418 968 554
santo@diversedesigngroup.com.au
ABN 45 063 852 868

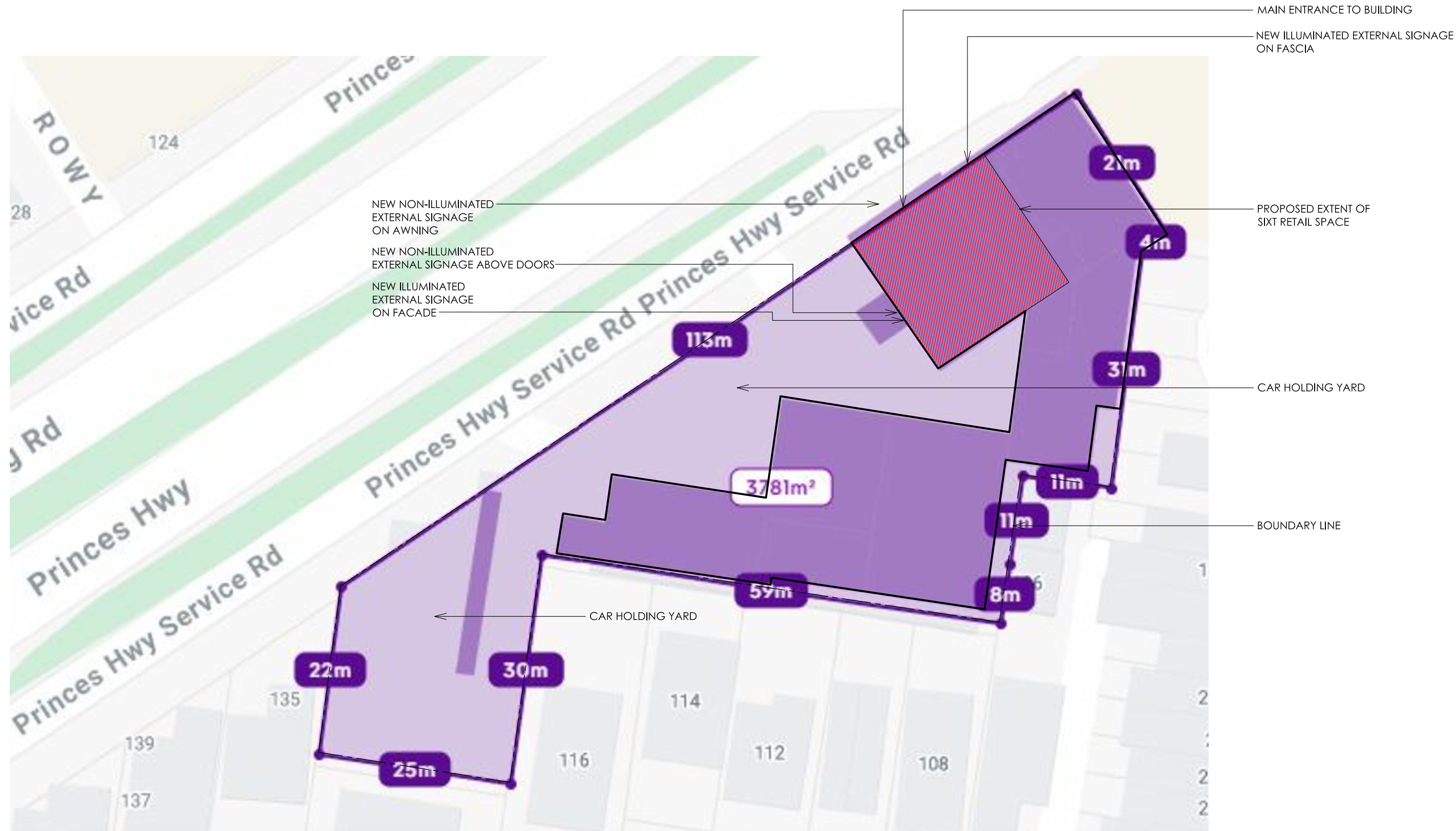


SIXT BRANCH DEVELOPMENT
FOOTSCRAY
101-103 GEELONG ROAD
FOOTSCRAY VIC 3011

BRANCH DEVELOPMENT

PROJECT DATE	DRAWN BY	CHECKED BY	DWG NO.
MAY 2025	MC	ST	LP01
PROJECT NO.	BRANCH REFERENCE	REVISION ISSUE	
03323	VIC - 236	B	
SCALE			

[illegible]



SITE PLAN

1:500

			<div><div><div></div><div></div><div></div></div><div>D D G DIVERSE DESIGN GROUP</div></div> <div>34 Princes Street Hunters Hill, NSW, 2110 +61 418 968 554 santo@diversedesigngroup.com.au ABN 45 063 852 868</div>	DESIGNER	<div><div><div></div><div></div><div></div></div><div>SixT</div></div> <div>SixT BRANCH DEVELOPMENT FOOTSCRAY 101-103 GEELONG ROAD FOOTSCRAY VIC 3011</div>	PROJECT:	BRANCH DEVELOPMENT				
						<div><div><div></div><div></div><div></div></div><div>NORTH</div></div>	PROJECT DATE. MAY 2025	DRAWN BY MC	CHECKED BY ST	DWG NO. SP01	
B	11.06.25	FINAL ISSUE					PROJECT NO. 03323	BRANCH REFERENCE VIC - 236		REVISION ISSUE. B	
A	16.05.25	PRELIMINARY LAYOUTS FOR CLIENT APPROVAL					SCALE NTS				
REVISION ISSUE	REVISION DATE	AMENDMENT DETAILS	Copyright remains the property of Accucadd Pty Ltd. Reproduction of the whole or part of the document constitutes infringement of copyright. © 2024 Information, ideas and concepts contained in this document are confidential. All dimensions are to be confirmed on site and designer contacted immediately should any discrepancies arise. Do not scale off drawings								

LEGEND

- EST FIRE ESTINGUISHER
- FHR FIRE HOSE REEL
- HYD FIRE HYDRANT
- EXIT EXIT SIGN
- DP DOWNPIPE
- GAS GAS METER
- AC AC UNIT

AREA CALCULATIONS

GROUND FLOOR AREA: 370 m2

RELOCATE AS REQUIRED ALL EXISTING SERVICES. INSTALL NEW SERVICES AS REQUIRED

LINE OF CONCRETE BEAMS OVER

BOXED OUT COLUMNS

MAKE GOOD FLOOR SURFACE READY FOR NEW FINISHES

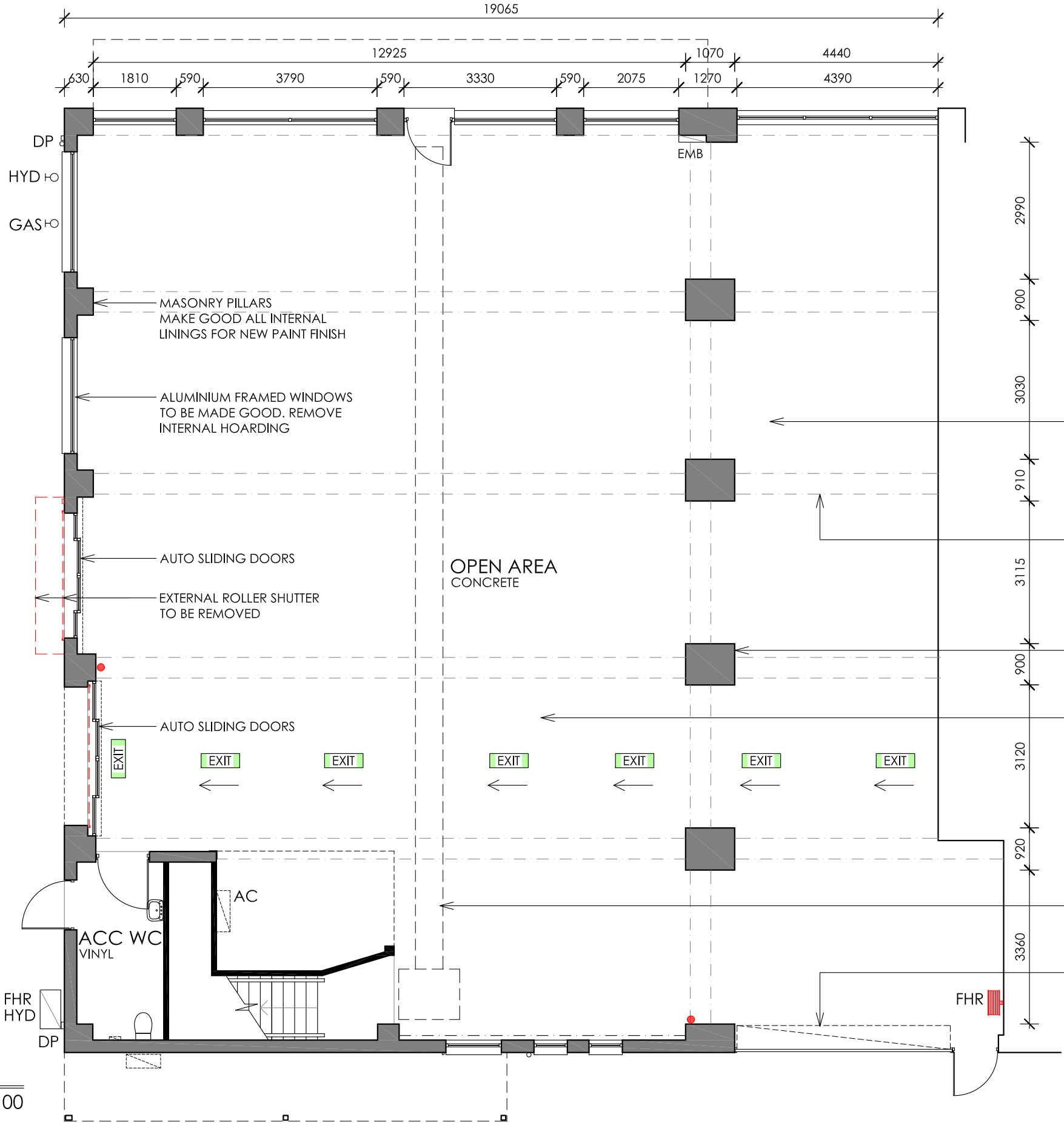
LINE OF DUCTING OVER

ROLLER SHUTTER

FLOOR PLAN

EXISTING CONDITIONS

1: 100



REVISION	REVISION	AMENDMENT DETAILS
ISSUE	DATE	
B	11.06.25	FINAL ISSUE
A	16.05.25	PRELIMINARY LAYOUTS FOR CLIENT APPROVAL



34 Princes Street
Hunters Hill, NSW, 2110
+61 418 968 554
santo@diversedesigngroup.com.au
ABN 45 083 852 868


SixT SIXT BRANCH DEVELOPMENT

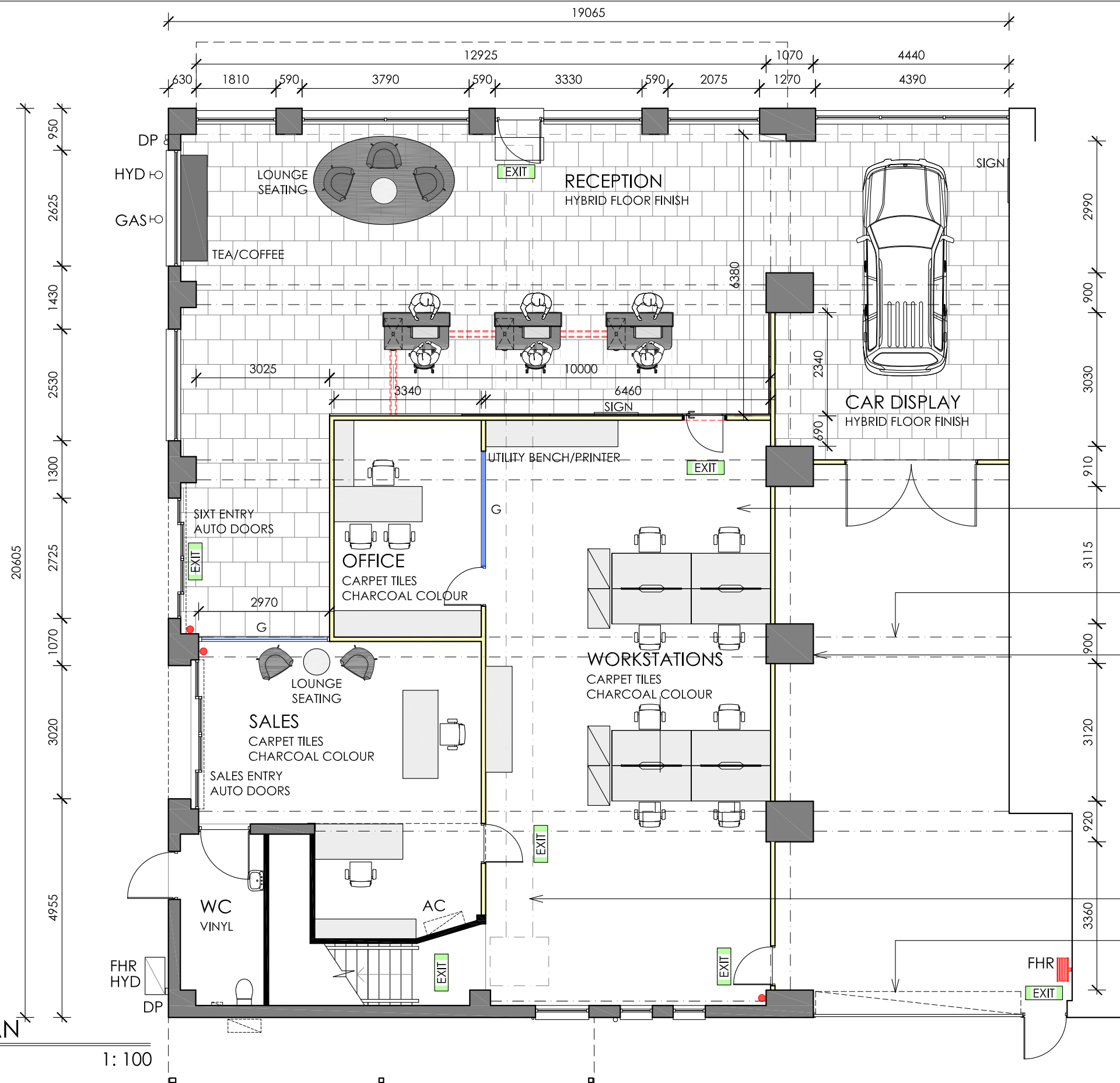
FOOTSCRAY
101-103 GEELONG ROAD
FOOTSCRAY VIC 3011

DESIGNER

PROJECT:

Copyright remains the property of Accucadd Pty Ltd. Reproduction of the whole or part of the document constitutes infringement of copyright. © 2024
Information, ideas and concepts contained in this document are confidential. All dimensions are to be confirmed on site and designer contacted immediately should any discrepancies arise. Do not scale off drawings

BRANCH DEVELOPMENT				
	PROJECT DATE. MAY 2025	DRAWN BY MC	CHECKED BY ST	DWG NO.
	PROJECT NO. 03323	BRANCH REFERENCE VIC - 236		EP01
	SCALE 1:100			



FLOOR PLAN
PROPOSED

1: 100

LEGEND

1. FLOATING HYBRID FLOOR
KORLOK STONE RIGID CORE
BLACK SANDS RKT3006-G
AVAILABLE FROM FLOORMANIA
0410 538 464
2. BASIC COUNTER
3. COUNTER CHAIR
4. ILLUMINATED BACK WALL LOGO
5. OTTOMAN
6. PRINTER BENCH
7. BACK WALL PANELS
COLOUR: RAL 9004 MATT
REFER TO EL03 FOR LOCATION
8. BACK WALL PANELS
COLOUR: RAL 2017 MATT
REFER TO EL03 FOR LOCATION

NOTE:
RELOCATE ALL SERVICES TO SUIT NEW
LAYOUT

RAL 9004
Signal black

EXTERNAL & INTERNAL PAINT COLOUR AS
APPLICABLE. (MATT FINISH - INTERNAL)
LOW SHEEN ACRYLIC EXTERNAL

G

GLAZED PARTITION UP TO 2700mm AFFL.
CONSTRUCT NEW FULL HEIGHT TIMBER
FRAMED WITH PLASTERBOARD FINISH
OVER. PAINT FINISH IN RAL 9004 SIGNAL
BLACK. MATT FINISH.
SLAB-SLAB HEIGHT = 4620mm.
SLAB-US BEAM HEIGHT = 3740mm.

CONSTRUCT NEW FULL HEIGHT TIMBER
FRAMED WITH PLASTERBOARD FINISH.
PAINT FINISH IN RAL 9004 SIGNAL
BLACK. MATT FINISH.
SLAB-SLAB HEIGHT = 4620mm.
SLAB-US BEAM HEIGHT = 3740mm.

WALLS LOCATED UNDER CONCRETE
BEAMS WHEREVER POSSIBLE

GLAZING DECAL

LOCATE DECALS BETWEEN 900-1000MM AFFL
METAMARK M7 SOLID GREY

RELOCATE AS REQUIRED
ALL EXISTING SERVICES.
INSTALL NEW SERVICES AS
REQUIRED

LINE OF CONCRETE
BEAMS OVER

BOXED OUT COLUMNS

LINE OF DUCTING
OVER

ROLLER SHUTTER

REVISION ISSUE	REVISION DATE	AMENDMENT DETAILS
B	11.06.25	FINAL ISSUE
A	16.05.25	PRELIMINARY LAYOUTS FOR CLIENT APPROVAL

D D G

DIVERSE DESIGN GROUP

34 Princes Street
Hunters Hill, NSW, 2110

+61 418 968 554
santo@diversedesigngroup.com.au
ABN 45 063 852 868

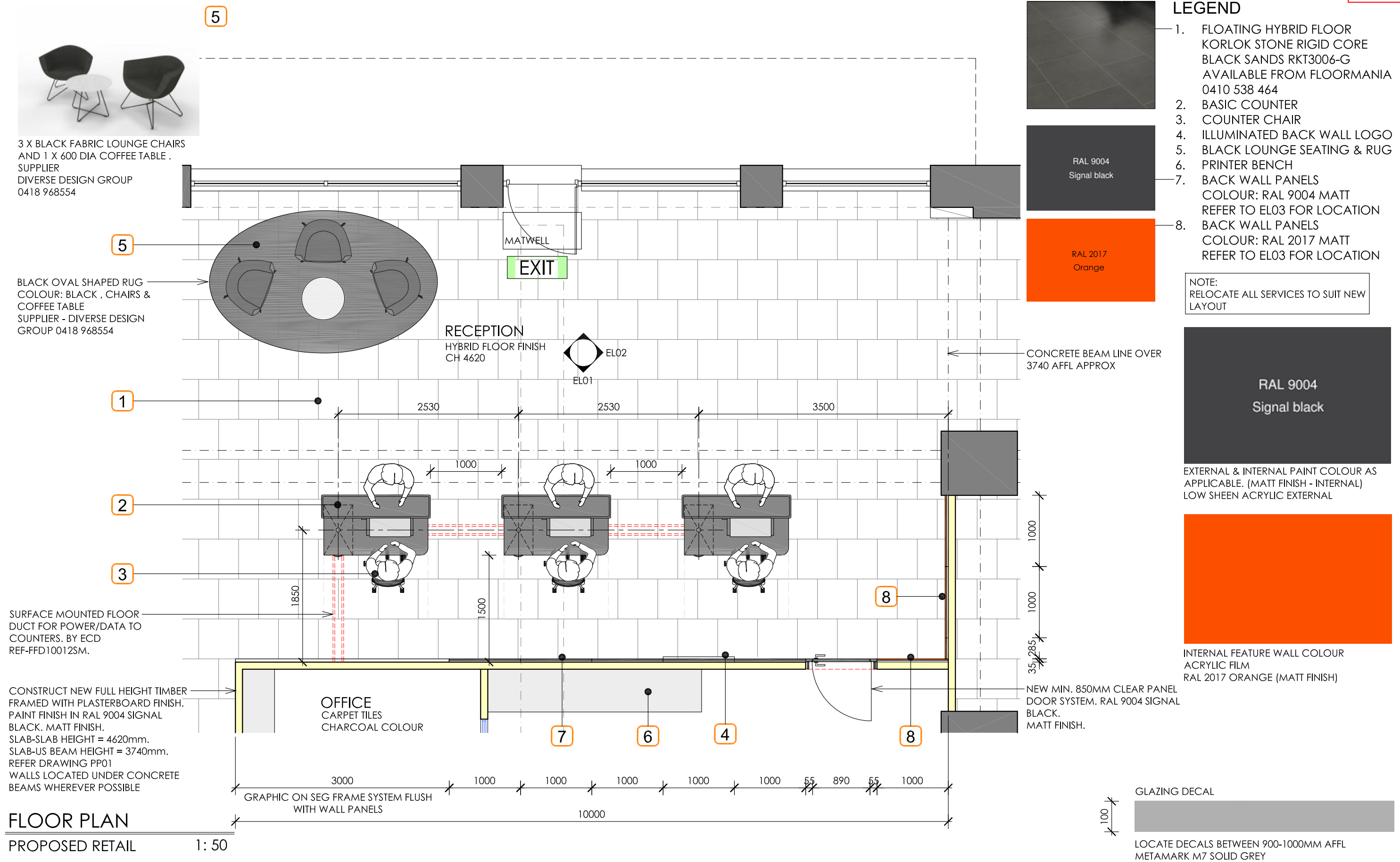
Copyright remains the property of Accucadd Pty Ltd. Reproduction of the whole or part of the document constitutes infringement of copyright. © 2024
Information, ideas and concepts contained in this document are confidential. All dimensions are to be confirmed on site and designer contacted immediately should any discrepancies arise. Do not scale off drawings



SIXT BRANCH DEVELOPMENT
FOOTSCRAY
101-103 GEELONG ROAD
FOOTSCRAY VIC 3011

BRANCH DEVELOPMENT

PROJECT DATE: MAY 2025	DRAWN BY: MC	CHECKED BY: ST	DWG NO. PP01
PROJECT NO. 03323	BRANCH REFERENCE VIC - 236		
SCALE 1:100			REVISION ISSUE. B



REVISION ISSUE	REVISION DATE	AMENDMENT DETAILS
B	11.06.25	FINAL ISSUE
A	16.05.25	PRELIMINARY LAYOUTS FOR CLIENT APPROVAL

34 Princes Street
Hunters Hill, NSW, 2110
+61 418 968 554
santo@diversedesigngroup.com.au
ABN 45 063 852 868


SixT SIXT BRANCH DEVELOPMENT

FOOTSCRAY
101-103 GEELONG ROAD
FOOTSCRAY VIC 3011

DESIGNER

PROJECT:

Copyright remains the property of Accucadd Pty Ltd. Reproduction of the whole or part of the document constitutes infringement of copyright. © 2024
Information, ideas and concepts contained in this document are confidential. All dimensions are to be confirmed on site and designer contacted immediately should any discrepancies arise. Do not scale off drawings

BRANCH DEVELOPMENT				
	PROJECT DATE. MAY 2025	DRAWN BY MC	CHECKED BY ST	DWG NO.
	PROJECT NO. 03323	BRANCH REFERENCE VIC - 236		PP02
	SCALE 1:100			

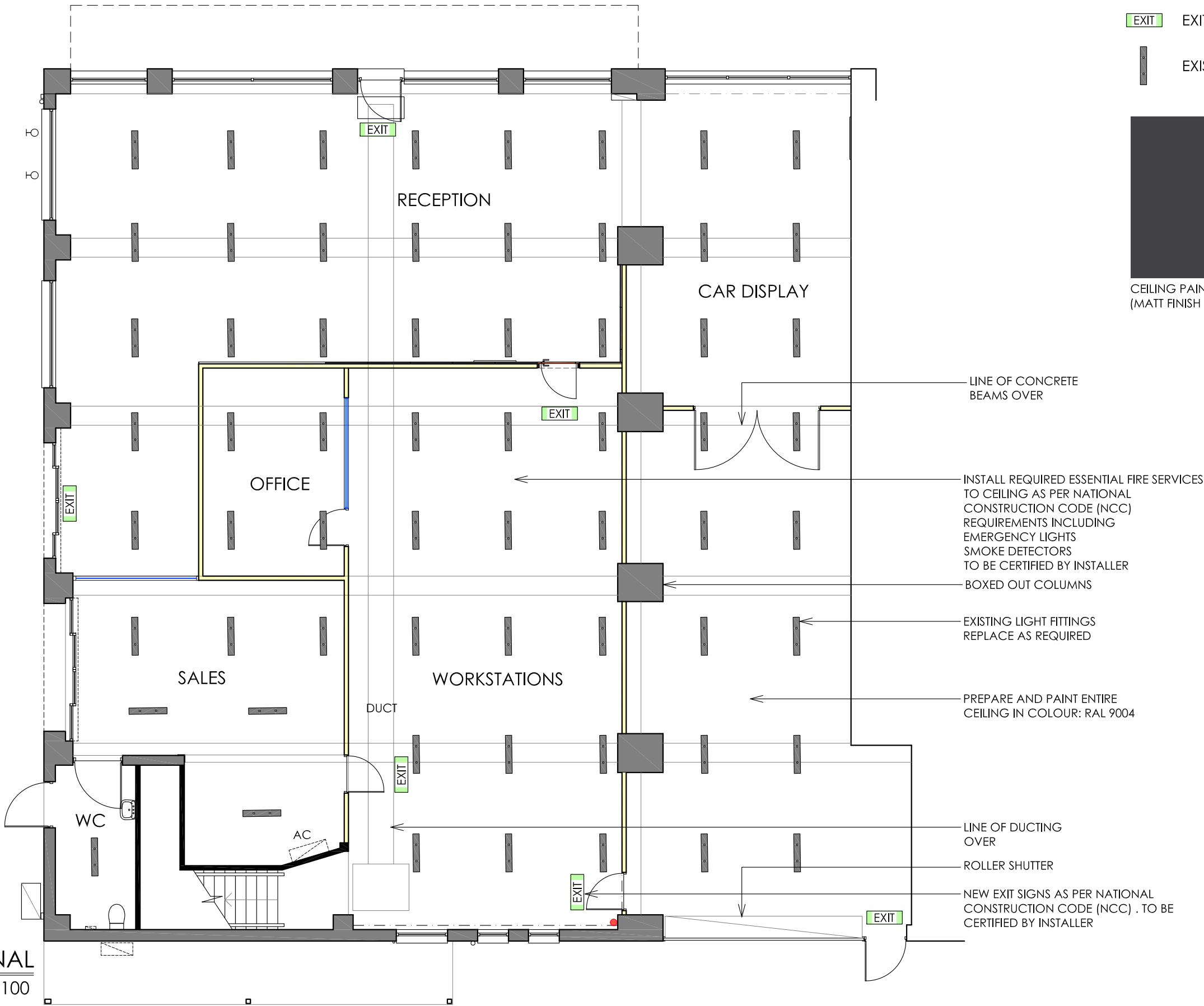
LEGEND

- EXIT

EXIT SIGN
- EXISTING LIGHT FITTING



CEILING PAINT COLOUR.
(MATT FINISH - INTERNAL)



CEILING PLAN NOTIONAL
PROPOSED 1: 100

REVISION ISSUE	REVISION DATE	AMENDMENT DETAILS
B	11.06.25	FINAL ISSUE
A	16.05.25	PRELIMINARY LAYOUTS FOR CLIENT APPROVAL

34 Princes Street
Hunters Hill, NSW, 2110

+61 418 968 554
santo@diversedesigngroup.com.au
ABN 45 063 852 868

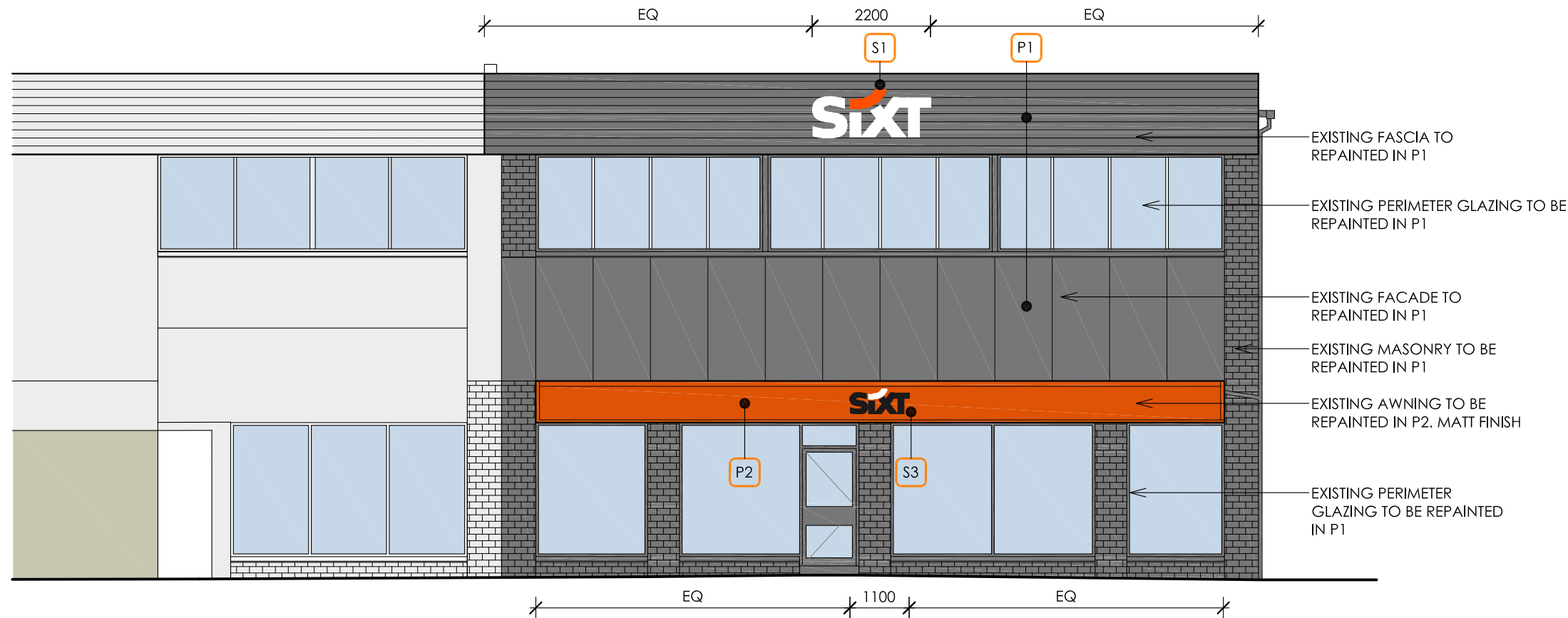
DESIGNER

SiXT SiXT BRANCH DEVELOPMENT
FOOTSCRAY
101-103 GEELONG ROAD
FOOTSCRAY VIC 3011

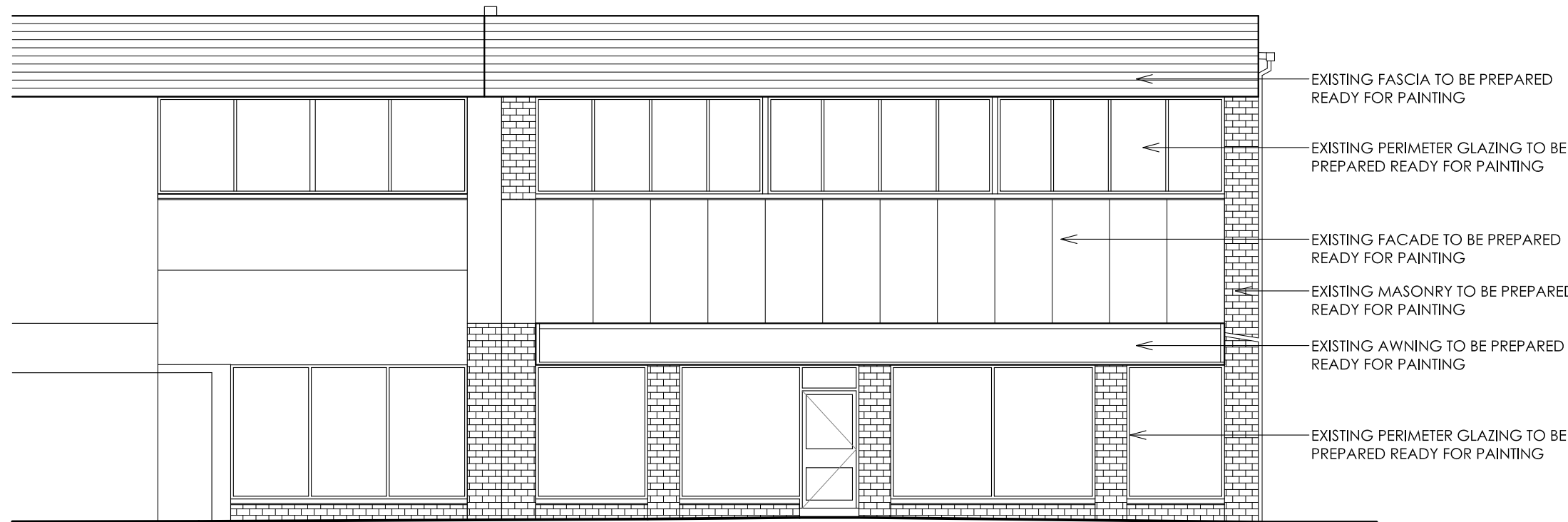
PROJECT:

Copyright remains the property of Accucadd Pty Ltd. Reproduction of the whole or part of the document constitutes infringement of copyright. © 2024
Information, ideas and concepts contained in this document are confidential. All dimensions are to be confirmed on site and designer contacted immediately should any discrepancies arise. Do not scale off drawings

BRANCH DEVELOPMENT				
	PROJECT DATE, MAY 2025	DRAWN BY MC	CHECKED BY ST	DWG NO. CP01
	PROJECT NO. 03323	BRANCH REFERENCE VIC - 236		REVISION ISSUE. B
	SCALE 1:100			



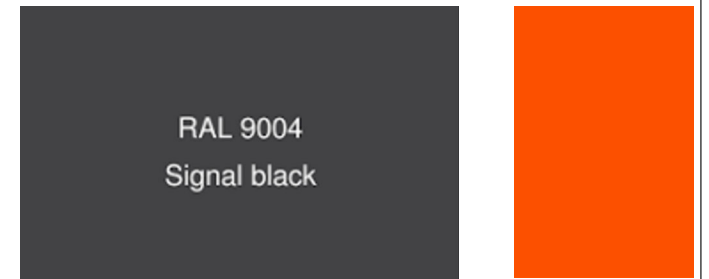
PROPOSED EXTERNAL ELEVATION (NORTH - GEELONG RD)
FRONT 1:100



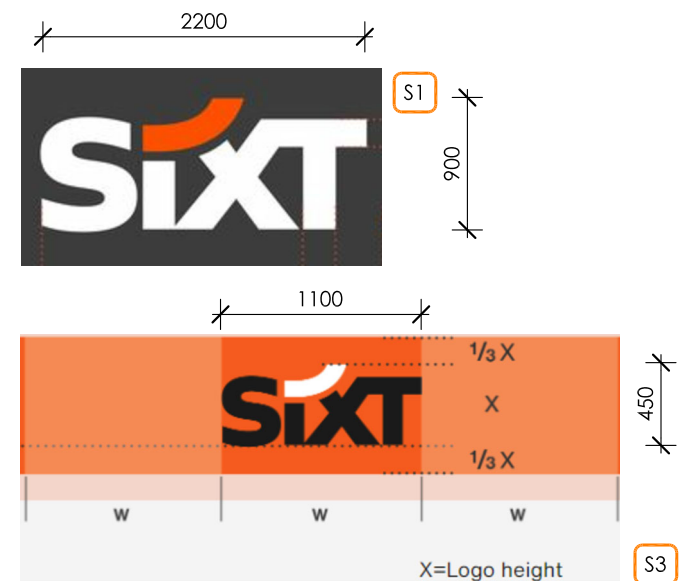
EXISTING EXTERNAL ELEVATION (NORTH - GEELONG RD)
FRONT 1:100

SIGNAGE LEGEND

- S1** 2 OFF
ILLUMINATED 2D OPTIC SIXT SINGLE LETTER LOGO WITH WHITE LETTERS & ORANGE SWOOSH FIXED TO FASCIA. 200mm THK APPROX. REFER TO BRANCH DESIGN EXTERIOR OF THE SIXT CI EXTERIOR FACADE STANDALONE LOGO. REFER DRAWING EL01 & EL02
FACADE TO BE PREPARED & RE-PAINTED IN COLOUR: SIGNAL BLACK RAL 9004
(EXTERNAL SIGNAGE MAY BE SUBJECT TO AUTHORITY APPROVAL)
- S2** 1 OFF
NON-ILLUMINATED 2D OPTIC SIXT SINGLE LETTER LOGO WITH WHITE LETTERS & ORANGE SWOOSH FIXED TO FASCIA. 6mm THK ALUMINIUM PANELS. REFER TO BRANCH DESIGN EXTERIOR OF THE SIXT CI EXTERIOR FACADE STANDALONE LOGO. REFER DRAWING EL01 & EL02
FACADE TO BE PREPARED & RE-PAINTED IN COLOUR: SIGNAL BLACK RAL 9004
(EXTERNAL SIGNAGE MAY BE SUBJECT TO AUTHORITY APPROVAL)
- S3** 1 OFF (EXTERNAL SIGNAGE)
NON-ILLUMINATED 2D OPTIC SIXT SINGLE LETTER LOGO WITH BLACK LETTERS & WHITE SWOOSH FIXED TO FASCIA. 6mm THK ORANGE RAL 2017 ACM PANELS. REFER TO DETAIL DRAWING EL01
(EXTERNAL SIGNAGE MAY BE SUBJECT TO AUTHORITY APPROVAL)
- P2** RAL 2017
- P1**



FRONT FACADE OF BUILDING, AWNING ROOF & POSTS TO BE REPAINTED IN COLOUR: SIGNAL BLACK RAL 9004. LOW SHEEN ACRYLIC.



REVISION	REVISION	AMENDMENT DETAILS
ISSUE	DATE	
B	11.06.25	FINAL ISSUE
A	16.05.25	PRELIMINARY LAYOUTS FOR CLIENT APPROVAL



34 Princes Street
Hunters Hill, NSW, 2110
+61 418 968 554
santo@diversedesigngroup.com.au
ABN 45 063 852 868

DESIGNER

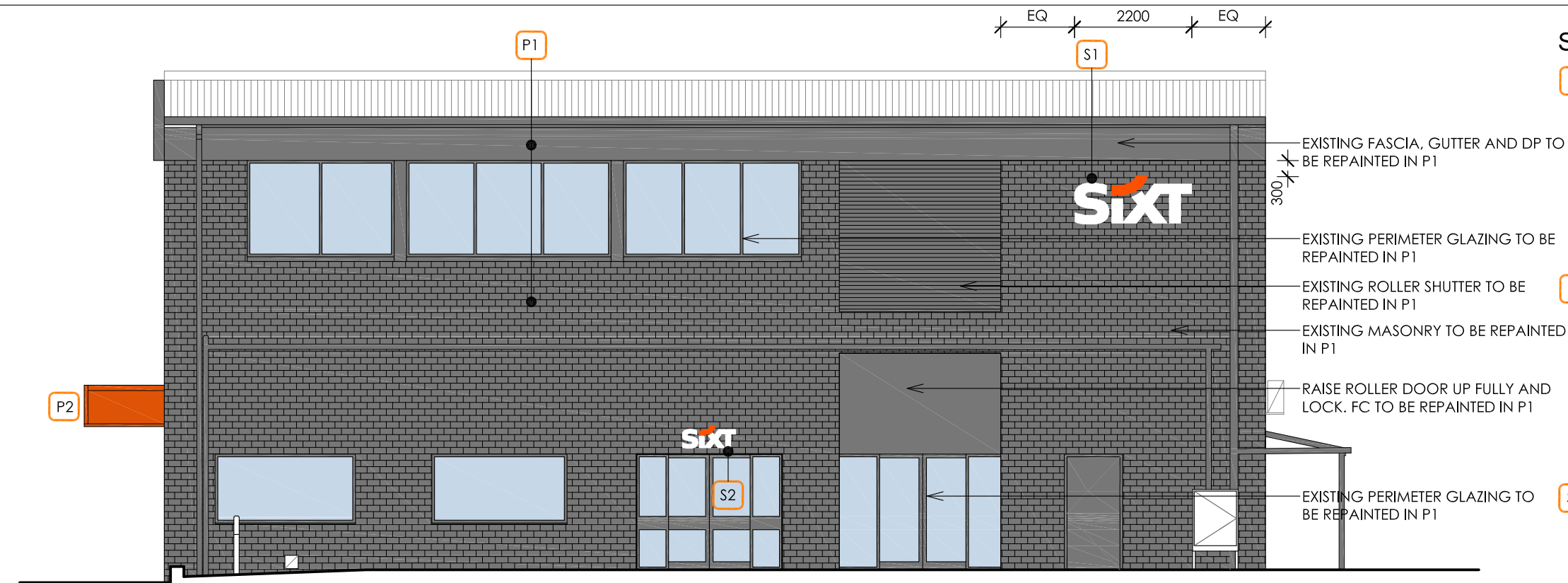


SIXT BRANCH DEVELOPMENT
FOOTSCRAY
101-103 GEELONG ROAD
FOOTSCRAY VIC 3011

BRANCH DEVELOPMENT

PROJECT DATE, MAY 2025	DRAWN BY MC	CHECKED BY ST	DWG NO. EL01
PROJECT NO. 03323	BRANCH REFERENCE VIC - 236		
SCALE 1:100			REVISION ISSUE B

Copyright remains the property of Accucadd Pty Ltd. Reproduction of the whole or part of the document constitutes infringement of copyright. © 2024
Information, ideas and concepts contained in this document are confidential. All dimensions are to be confirmed on site and designer contacted immediately should any discrepancies arise. Do not scale off drawings



PROPOSED EXTERNAL ELEVATION (WEST)

SIDE

1:100



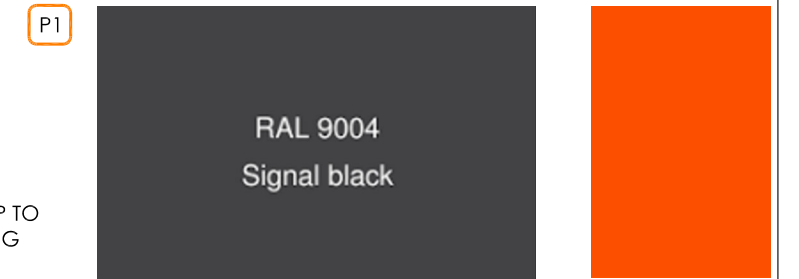
EXISTING EXTERNAL ELEVATION (WEST)

SIDE

1:100

SIGNAGE LEGEND

- S1** 2 OFF
ILLUMINATED 2D OPTIC SIXT SINGLE LETTER LOGO WITH WHITE LETTERS & ORANGE SWOOSH FIXED TO FASCIA. 200mm THK APPROX. REFER TO BRANCH DESIGN EXTERIOR OF THE SIXT CI EXTERIOR FACADE STANDALONE LOGO. REFER DRAWING EL01 & EL02
FACADE TO BE PREPARED & RE-PAINTED IN COLOUR: SIGNAL BLACK RAL 9004
(EXTERNAL SIGNAGE MAY BE SUBJECT TO AUTHORITY APPROVAL)
- S2** 1 OFF
NON-ILLUMINATED 2D OPTIC SIXT SINGLE LETTER LOGO WITH WHITE LETTERS & ORANGE SWOOSH FIXED TO FASCIA. 6mm THK ALUMINIUM PANELS. REFER TO BRANCH DESIGN EXTERIOR OF THE SIXT CI EXTERIOR FACADE STANDALONE LOGO. REFER DRAWING EL01 & EL02
FACADE TO BE PREPARED & RE-PAINTED IN COLOUR: SIGNAL BLACK RAL 9004
(EXTERNAL SIGNAGE MAY BE SUBJECT TO AUTHORITY APPROVAL)
- S3** 1 OFF (EXTERNAL SIGNAGE)
NON-ILLUMINATED 2D OPTIC SIXT SINGLE LETTER LOGO WITH BLACK LETTERS & WHITE SWOOSH FIXED TO FASCIA. 6mm THK ORANGE RAL 2017 ACM PANELS. REFER TO DETAIL DRAWING EL01
(EXTERNAL SIGNAGE MAY BE SUBJECT TO AUTHORITY APPROVAL)



FRONT FACADE OF BUILDING, AWNING ROOF & POSTS TO BE REPAINTED IN COLOUR: SIGNAL BLACK RAL 9004. LOW SHEEN ACRYLIC.



REVISION	REVISION	AMENDMENT DETAILS
ISSUE	DATE	
B	11.06.25	FINAL ISSUE
A	16.05.25	PRELIMINARY LAYOUTS FOR CLIENT APPROVAL



34 Princes Street
Hunters Hill, NSW, 2110
+61 418 968 554
santo@diversedesigngroup.com.au
ABN 45 063 852 868



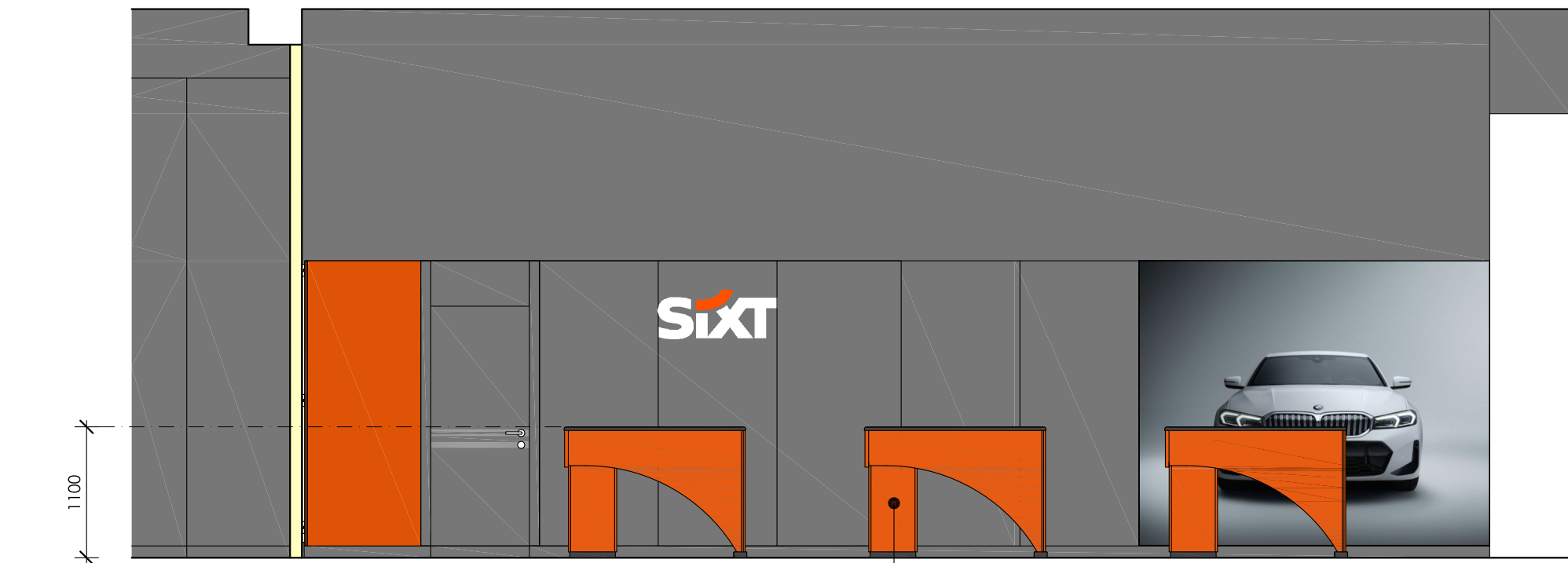
SIXT SIXT BRANCH DEVELOPMENT
FOOTSCRAY
101-103 GEELONG ROAD
FOOTSCRAY VIC 3011

DESIGNER

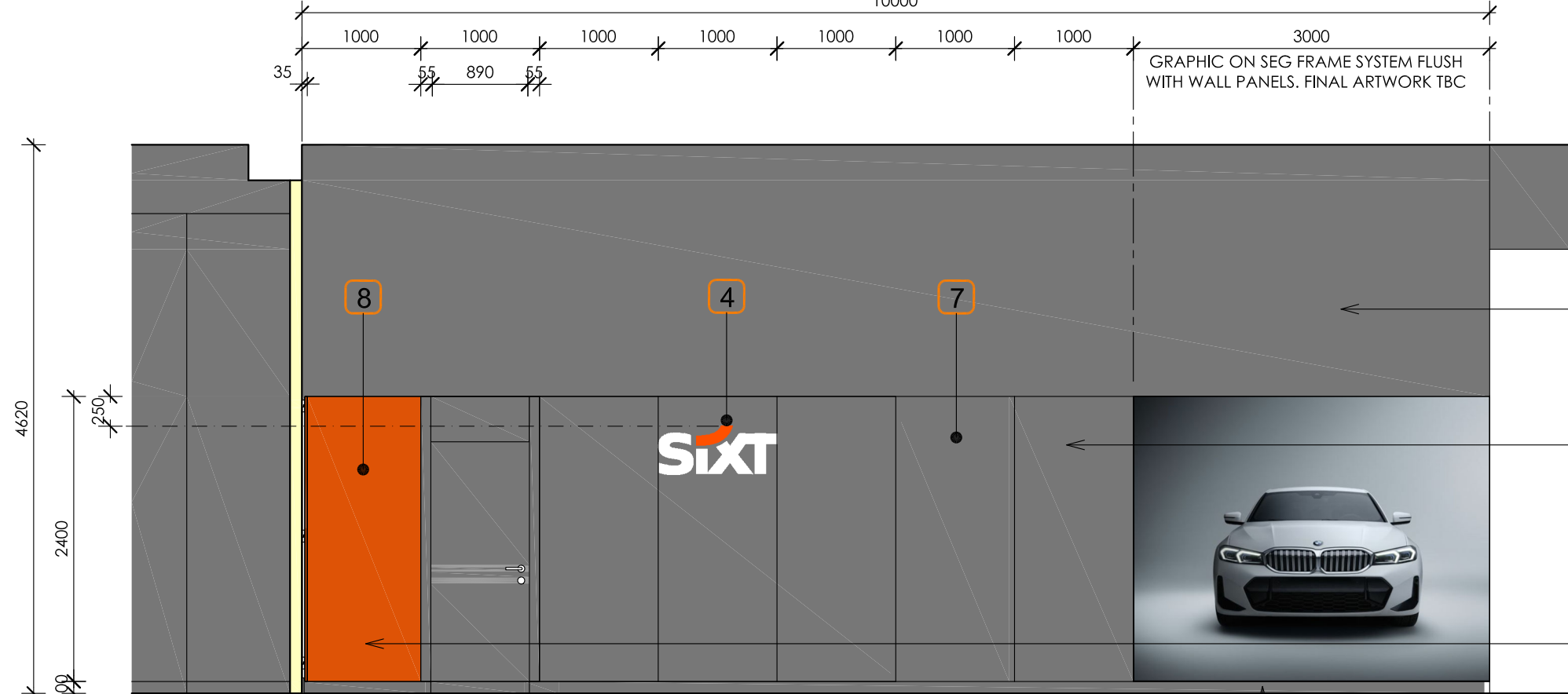
PROJECT:

Copyright remains the property of Accucadd Pty Ltd. Reproduction of the whole or part of the document constitutes infringement of copyright. © 2024
Information, ideas and concepts contained in this document are confidential. All dimensions are to be confirmed on site and designer contacted immediately should any discrepancies arise. Do not scale off drawings

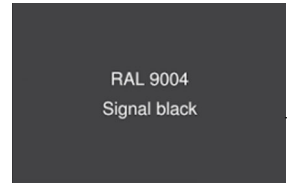
BRANCH DEVELOPMENT				
PROJECT:	PROJECT DATE, MAY 2025	DRAWN BY MC	CHECKED BY ST	DWG NO. EL02
	PROJECT NO. 03323	BRANCH REFERENCE VIC - 236		REVISION ISSUE. B
	SCALE 1:100			



EL01
PROPOSED - COUNTER 1: 50



EL01
PROPOSED - REAR WALL 1: 50



LEGEND

1. FLOATING HYBRID FLOOR
KORLOK STONE RIGID CORE
BLACK SANDS RKT3006-G
AVAILABLE FROM FLOORMANIA
0410 538 464
2. BASIC COUNTER
3. COUNTER CHAIR
4. ILLUMINATED BACK WALL LOGO
5. BLACK LOUNGE SEATING & RUG
6. PRINTER BENCH
7. BACK WALL PANELS
COLOUR: RAL 9004 MATT
REFER TO EL03 FOR LOCATION
8. BACK WALL PANELS
COLOUR: RAL 2017 MATT
REFER TO EL04 FOR LOCATION

NOTE:
ALL SERVICES TO SUIT NEW LAYOUT



EXTERNAL & INTERNAL PAINT COLOUR AS
APPLICABLE. (MATT FINISH - INTERNAL)
LOW SHEEN ACRYLIC EXTERNAL

PAINT FINISH ABOVE PANELS.
COLOUR: RAL 9004 (SIGNAL BLACK)
MATT FINISH.
SPRAY SOFFIT IN COLOUR:
RAL 9004 (SIGNAL BLACK) MATT FINISH.

1 X DOOR PANAL & 5 X WALL PANELS
ON SPLIT BATTENS
FIXED TO WALL. COLOUR: RAL 9004
(SIGNAL BLACK) MATT FINISH

1 WALL PANEL
COLOUR: RAL 2017 (ORANGE)
MATT FINISH

100mm HIGH SKIRTING
COLOUR: RAL 9004
SKIRTING FINISH TO MATCH WALL PANELS

REVISION ISSUE	REVISION DATE	AMENDMENT DETAILS
B	11.06.25	FINAL ISSUE
A	16.05.25	PRELIMINARY LAYOUTS FOR CLIENT APPROVAL



34 Princes Street
Hunters Hill, NSW, 2110
+61 418 968 554
santo@diversedesigngroup.com.au
ABN 45 063 852 868



Sixt SIXT BRANCH DEVELOPMENT
FOOTSCRAY
101-103 GEELONG ROAD
FOOTSCRAY VIC 3011

DESIGNER

PROJECT:

Copyright remains the property of Accucadd Pty Ltd. Reproduction of the whole or part of the document constitutes infringement of copyright. © 2024
Information, Ideas and concepts contained in this document are confidential. All dimensions are to be confirmed on site and designer contacted immediately should any discrepancies arise. Do not scale off drawings

BRANCH DEVELOPMENT				
PROJECT NO. 03323 SCALE 1:100	PROJECT DATE MAY 2025	DRAWN BY MC	CHECKED BY ST	DWG NO. EL03
	BRANCH REFERENCE VIC - 236			
			REVISION ISSUE B	

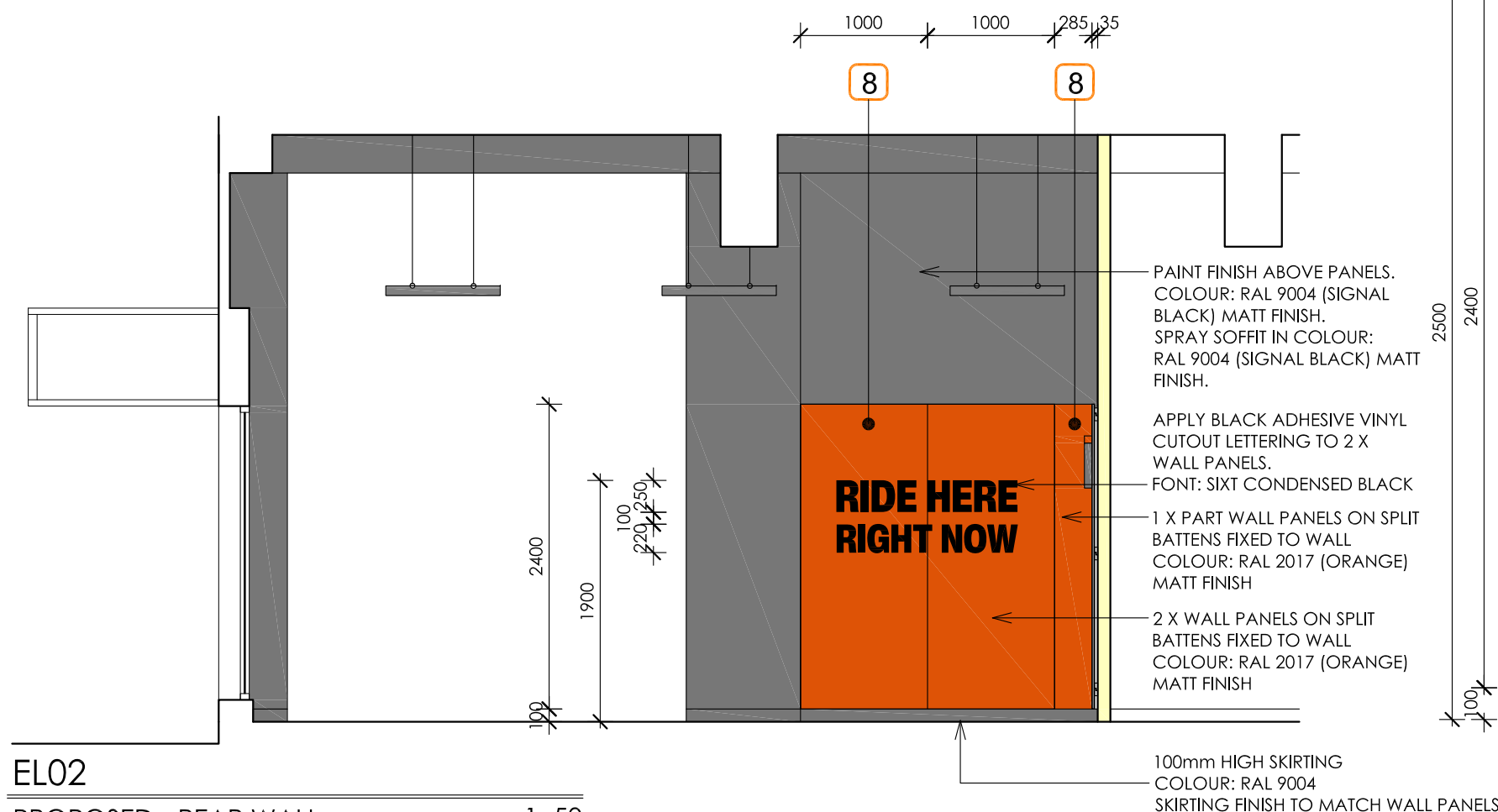
LEGEND

- 1. FLOATING HYBRID FLOOR
KORLOK STONE RIGID CORE
BLACK SANDS RKT3006-G
AVAILABLE FROM FLOORMANIA
0410 538 464
2. BASIC COUNTER
3. COUNTER CHAIR
4. ILLUMINATED BACK WALL LOGO
5. BLACK LOUNGE SEATING & RUG
6. PRINTER BENCH
- 7. BACK WALL PANELS
COLOUR: RAL 9004 MATT
REFER TO EL03 FOR LOCATION
- 8. BACK WALL PANELS
COLOUR: RAL 2017 MATT
REFER TO EL03 FOR LOCATION

NOTE:
ALL SERVICES TO SUIT NEW LAYOUT

RAL 9004
Signal black

EXTERNAL & INTERNAL PAINT COLOUR AS
APPLICABLE. (MATT FINISH - INTERNAL)
LOW SHEEN ACRYLIC EXTERNAL



EL02

PROPOSED - REAR WALL

1:50

SECTION

WALL PANELS

1:20

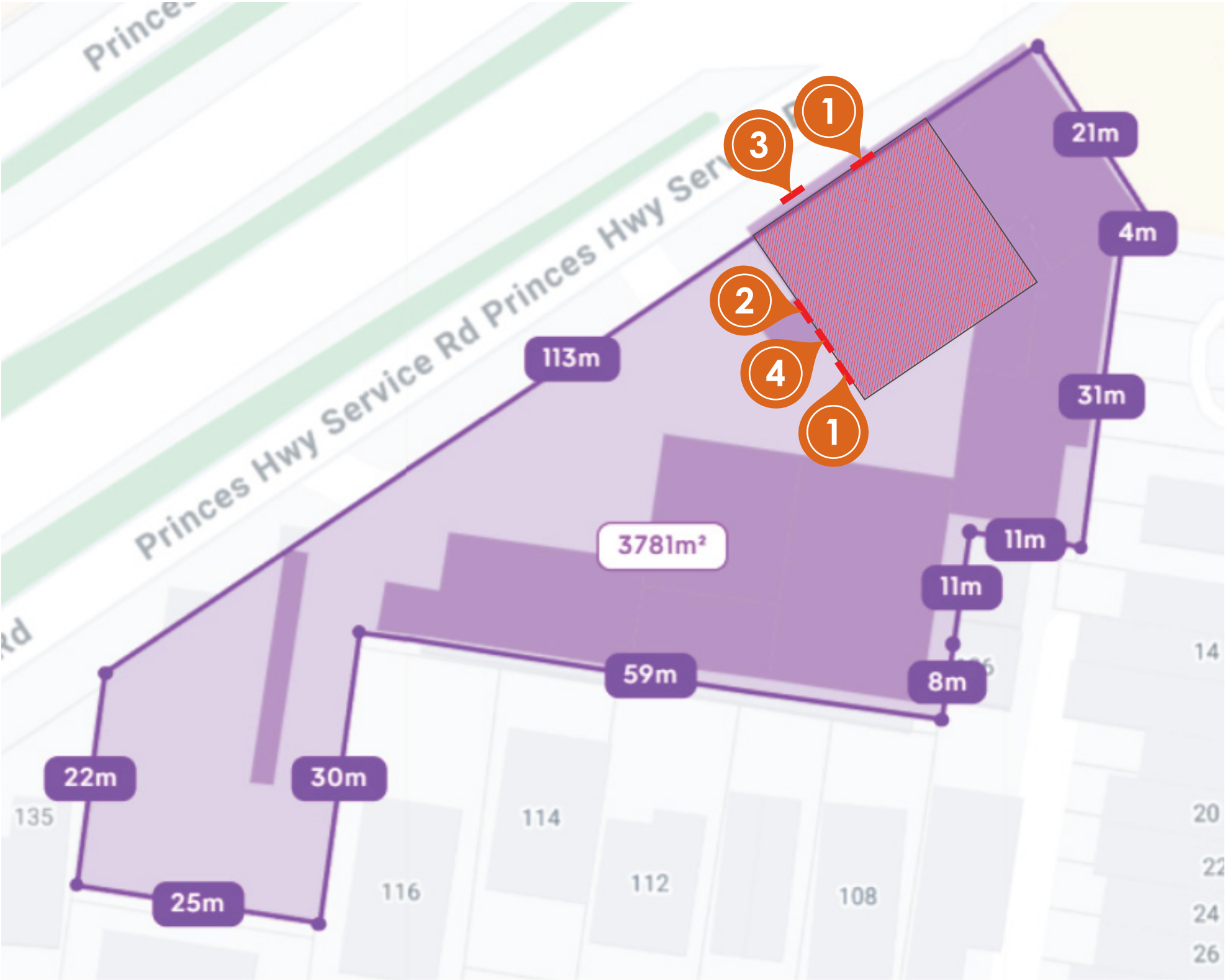
--	--	--	--	--	--	--	--	--	--	--	--	--	--	--	--	--	--	--	--	--	--	--	--	--	--	--	--	--	--	--	--	--	--	--	--	--	--	--	--	--	--	--	--	--	--	--	--	--	--	--	--	--	--	--	--	--	--	--	--	--	--	--	--	--	--	--	--	--	--	--	--	--	--	--	--	--	--	--	--	--	--	--	--	--	--	--	--	--	--	--	--	--	--	--	--	--	--	--	--	--	--	--	--	--	--	--	--	--	--	--	--	--	--	--	--	--	--	--	--	--	--	--	--	--	--	--	--	--	--	--	--	--	--	--	--	--	--	--	--	--	--	--	--	--	--	--	--	--	--	--	--	--	--	--	--	--	--	--	--	--	--	--	--	--	--	--	--	--	--	--	--	--	--	--	--	--	--	--	--	--	--	--	--	--	--	--	--	--	--	--	--	--	--	--	--	--	--	--	--	--	--	--	--	--	--	--	--	--	--	--	--	--	--	--	--	--	--	--	--	--	--	--	--	--	--	--	--	--	--	--	--	--	--	--	--	--	--	--	--	--	--	--	--	--	--	--	--	--	--	--	--	--	--	--	--	--	--	--	--	--	--	--	--	--	--	--	--	--	--	--	--	--	--	--	--	--	--	--	--	--	--	--	--	--	--	--	--	--	--	--	--	--	--	--	--	--	--	--	--	--	--	--	--	--	--	--	--	--	--	--	--	--	--	--	--	--	--	--	--	--	--	--	--	--	--	--	--	--	--	--	--	--	--	--	--	--	--	--	--	--	--	--	--	--	--	--	--	--	--	--	--	--	--	--	--	--	--	--	--	--	--	--	--	--	--	--	--	--	--	--	--	--	--	--	--	--	--	--	--	--	--	--	--	--	--	--	--	--	--	--	--	--	--	--	--	--	--	--	--	--	--	--	--	--	--	--	--	--	--	--	--	--	--	--	--	--	--	--	--	--	--	--	--	--	--	--	--	--	--	--	--	--	--	--	--	--	--	--	--	--	--	--	--	--	--	--	--	--	--	--	--	--	--	--	--	--	--	--	--	--	--	--	--	--	--	--	--	--	--	--	--	--	--	--	--	--	--	--	--	--	--	--	--	--	--	--	--	--	--	--	--	--	--	--	--	--	--	--	--	--	--	--	--	--	--	--	--	--	--	--	--	--	--	--	--	--	--	--	--	--	--	--	--	--	--	--	--	--	--	--	--	--	--	--	--	--	--	--	--	--	--	--	--	--	--	--	--	--	--	--	--	--	--	--	--	--	--	--	--	--	--	--	--	--	--	--	--	--	--	--	--	--	--	--	--	--	--	--	--	--	--	--	--	--	--	--	--	--	--	--	--	--	--	--	--	--	--	--	--	--	--	--	--	--	--	--	--	--	--	--	--	--	--	--	--	--	--	--	--	--	--	--	--	--	--	--	--	--	--	--	--	--	--	--	--	--	--	--	--	--	--	--	--	--	--	--	--	--	--	--	--	--	--	--	--	--	--	--	--	--	--	--	--	--	--	--	--	--	--	--	--	--	--	--	--	--	--	--	--	--	--	--	--	--	--	--	--	--	--	--	--	--	--	--	--	--	--	--	--	--	--	--	--	--	--	--	--	--	--	--	--	--	--	--	--	--	--	--	--	--	--	--	--	--	--	--	--	--	--	--	--	--	--	--	--	--	--	--	--	--	--	--	--	--	--	--	--	--	--	--	--	--	--	--	--	--	--	--	--	--	--	--	--	--	--	--	--	--	--	--	--	--	--	--	--	--	--	--	--	--	--	--	--	--	--	--	--	--	--	--	--	--	--	--	--	--	--	--	--	--	--	--	--	--	--	--	--	--	--	--	--	--	--	--	--	--	--	--	--	--	--	--	--	--	--	--	--	--	--	--	--	--	--	--	--	--	--	--	--	--	--	--	--	--	--	--	--	--	--	--	--	--	--	--	--	--	--	--	--	--	--	--	--	--	--	--	--	--	--	--	--	--	--	--	--	--	--	--	--	--	--	--	--	--	--	--	--	--	--	--	--	--	--	--	--	--	--	--	--	--	--	--	--	--	--	--	--	--	--	--	--	--	--	--	--	--	--	--	--	--	--	--	--	--	--	--	--	--	--	--	--	--	--	--	--	--	--	--	--	--	--	--	--	--	--	--	--	--	--	--	--	--	--	--	--	--	--	--	--	--	--	--	--	--	--	--	--	--	--	--	--	--	--	--	--	--	--	--	--	--	--	--	--	--	--	--	--	--	--	--	--	--	--	--	--	--	--	--	--	--	--	--	--	--	--	--	--	--	--	--	--	--	--	--	--	--	--	--	--	--	--	--	--	--	--	--	--	--	--	--	--	--	--	--	--	--	--	--	--	--	--	--	--	--	--	--	--	--	--	--	--	--	--	--	--	--	--	--	--	--	--	--	--	--	--	--	--	--	--	--	--	--	--	--	--	--	--	--	--	--	--	--	--	--	--	--	--	--	--	--	--	--	--	--	--	--	--	--	--	--	--	--	--	--	--	--	--	--	--	--	--	--	--	--	--	--	--	--	--	--	--	--	--	--	--	--	--	--	--	--	--	--	--	--	--	--	--	--	--	--	--	--	--	--	--	--	--	--	--	--	--	--	--	--	--	--	--	--	--	--	--	--	--	--	--	--	--	--	--	--	--	--	--	--	--	--	--	--	--	--	--	--	--	--	--	--	--	--	--	--	--	--	--	--	--	--	--	--	--	--	--	--	--	--	--	--	--	--	--	--	--	--	--	--	--	--	--	--	--	--	--	--	--	--	--	--	--	--	--	--	--	--	--	--	--	--	--	--	--	--	--	--	--	--	--	--	--	--	--	--	--	--	--	--	--	--	--	--	--	--	--	--	--	--	--	--	--	--	--	--	--	--	--	--	--	--	--	--	--	--	--	--	--	--	--	--	--	--	--	--	--	--	--	--	--	--	--	--	--	--	--	--	--	--	--	--	--	--	--	--	--	--	--	--	--	--	--	--	--	--	--	--	--	--	--	--	--	--	--	--	--	--	--	--	--	--	--	--	--	--	--	--	--	--	--	--	--	--	--	--	--	--	--	--	--	--	--	--	--	--	--	--	--	--	--	--	--	--	--	--	--	--	--	--	--	--	--	--	--	--	--	--	--	--	--	--	--	--	--	--	--	--	--	--	--	--	--	--	--	--	--	--	--	--	--	--	--	--

SixT

MONTAGE SIGNAGE PACK FOOTSCRAY BRANCH

101-103 GEELONG ROAD, FOOTSCRAY VIC 3011

EXTERNAL SIGNAGE PLAN



S1 **QTY:** 02
EXTERNAL SIXT LOGO -
ILLUMINATED

S2 **QTY:** 01
EXTERNAL SIXT LOGO -
NON-ILLUMINATED

S3 **QTY:** 01
EXTERNAL SIXT LOGO -
NON-ILLUMINATED

S4 **QTY:** 01
DIRECT VEHICLE WAREHOUSE
SIGNAGE - ILLUMINATED

CITY OF MARIBYRNONG
RECEIVED
21/07/2025
URBAN PLANNING

CLIENT: Sixt	PROJECT: Footscray Internal & External	FILE NAME: 6570 - FOOTSCRAY INTERNAL & EXTERNAL R03	DATE	JOB NO	DRAWN BY	REVISION	PAGE
FILE PATH: J:\PROJECTS\S\Sixt\03 VIC\Footscray Internal & External - 6570\2.2. PRODUCTION\2. DESIGN MONTAGE			17/07/2026	6570	HP	04	02/15

INTERNAL SIGNAGE PLAN

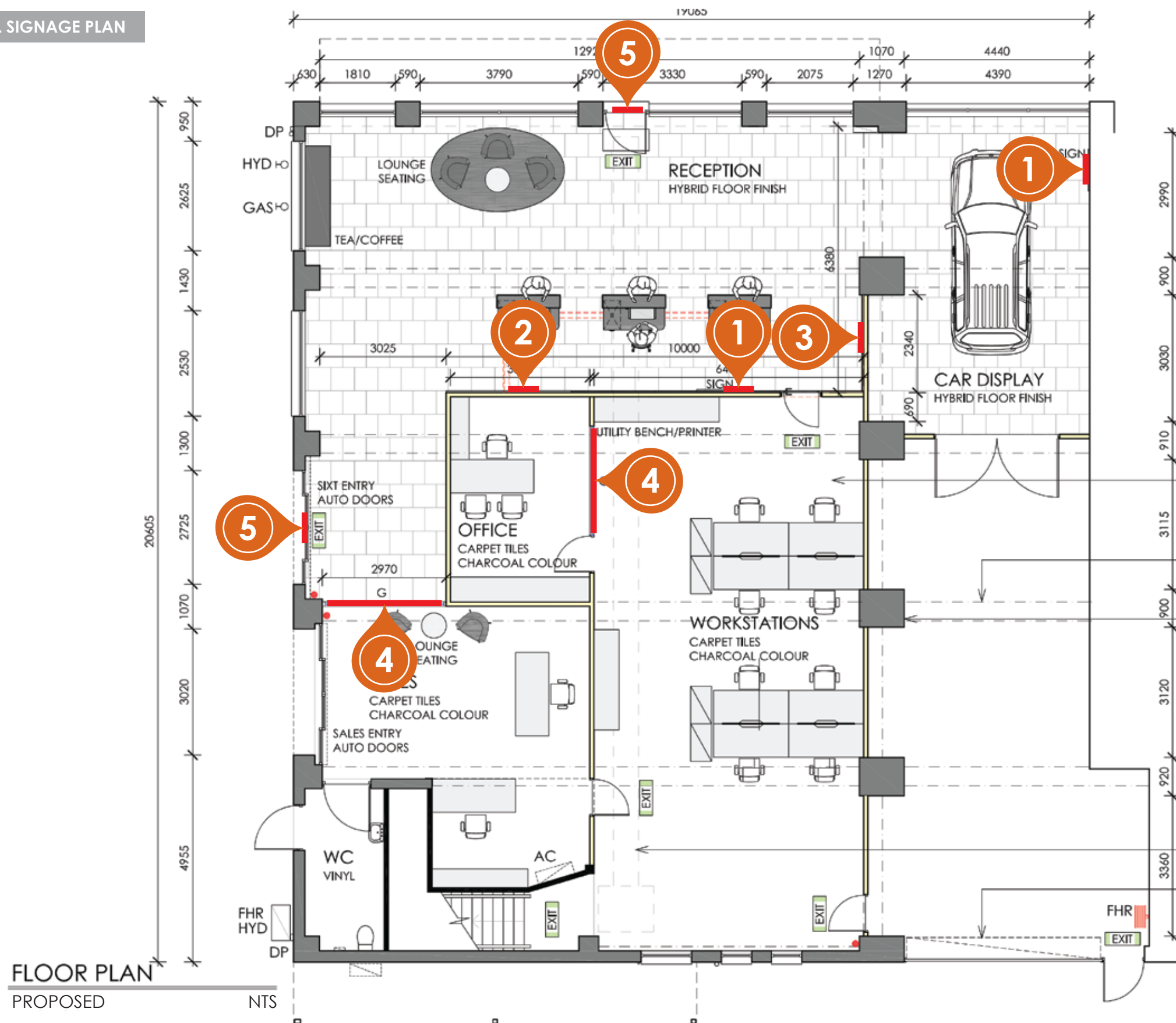
SIGN 1 QTY: 02
INTERNAL SIXT LOGO - ILLUMINATED

SIGN 2 QTY: 01
INTERNAL WALL GRAPHIC SIGN - NON-ILLUMINATED

SIGN 3 QTY: 01
RIDE HERE RIGHT NOW - NON-ILLUMINATED

SIGN 4 QTY: 01
INTERNAL GLASSWALL FROSTING

SIGN 5 QTY: 02
TRADING HOURS SIGN - NON-ILLUMINATED



CLIENT: Sixt	PROJECT: Footscray Internal & External	FILE NAME: 6570 - FOOTSCRAY INTERNAL & EXTERNAL R03	DATE	JOB NO	DRAWN BY	REVISION	PAGE
FILE PATH: J:\PROJECTS\S\Sixt\03 VIC\Footscray Internal & External - 6570\2.2. PRODUCTION\2. DESIGN MONTAGE			17/07/2026	6570	HP	04	03/15

Scale: NTS

LOGO VERSIONS

There are three logo versions to be used depending on the background.



Dark anthracite & white logo used on orange background only.



White & orange logo used for dark backgrounds/images.



Dark anthracite & orange logo used for white and bright backgrounds/images.

CITY OF MARIBYRNONG
RECEIVED
21/07/2025
URBAN PLANNING

COLOR SPECIFICATIONS



PRINT
CMYK: 00 / 72 / 100 / 00
PANTONE: Orange 021C

SCREEN
sRGB: 255 / 80 / 00
HEX: #ff5000

WALL & CEILING PAINT
RAL: 2017
NCS: S 0585-Y60R

FOILING OPAQUE
For signage and wayfinding on all non-translucent surfaces.
ORACAL: 751-34 matt

FOILING TRANSLUCENT
For foiled translucent surfaces like illuminated ribbon and pylon.
ORACAL Translucent 8500-034 orange

PANEL
Metal sheet powder coated in RAL 2017 orange matt



PRINT
CMYK: 00 / 00 / 10 / 99
PANTONE: Black C

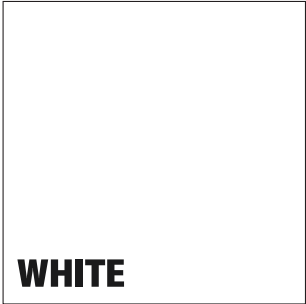
SCREEN
sRGB: 26 / 26 / 26
HEX: #1a1a1a

WALL & CEILING PAINT
RAL: 9004
NCS: S 8502-Y

FOILING OPAQUE
For signage and wayfinding on all non-translucent surfaces.
ORACAL: 751-070 matt

FOILING TRANSLUCENT
N.a

PANEL
Metal sheet powder coated in RAL 9004 black matt



PRINT
CMYK: 00 / 00 / 00 / 00
PANTONE: -

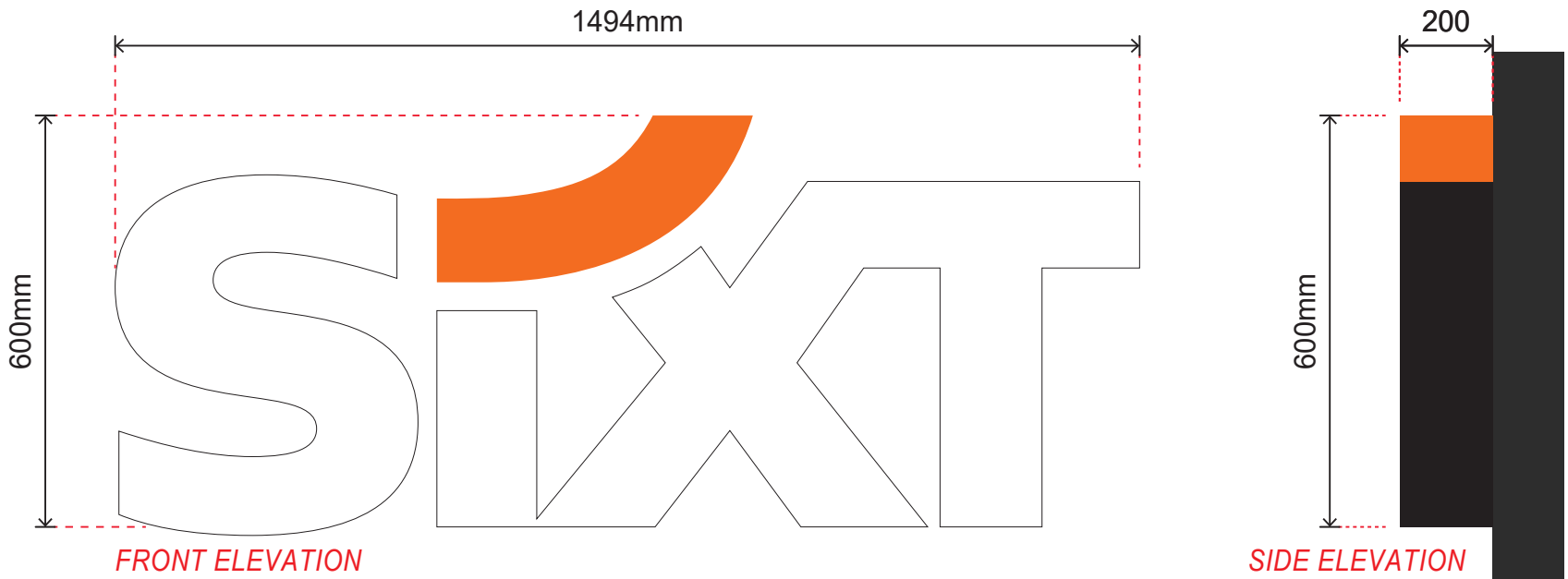
SCREEN
sRGB: 255 / 255 / 255
HEX: #ffffff

WALL & CEILING PAINT
RAL: 9003
NCS: S 0300-N

FOILING OPAQUE
For signage and wayfinding on all non-translucent surfaces.
ORACAL: 751-010 matt

FOILING TRANSLUCENT
Acrylic panel
1. IGEPa Perspex XT weiß opal 3mm 7984-1X11ST03
2. Thyssen XT weiß opal 3mm, WN071

CLIENT: Sixt	PROJECT: Footscray Internal & External	FILE NAME: 6570 - FOOTSCRAY INTERNAL & EXTERNAL R03	DATE	JOB NO	DRAWN BY	REVISION	PAGE
FILE PATH: J:\PROJECTS\S\Sixt\03 VIC\Footscray Internal & External - 6570\2.2. PRODUCTION\2. DESIGN MONTAGE			17/07/2026	6570	HP	04	05/15



SIGN 1

BG SXT-S1

EXTERNAL SIXT LOGO -
ILLUMINATED

Size:
1494mmW x 600mmH x 200mmD

Quantity:
2

Scale: NTS

Material:
Logo wordmark:
White acrylic panel
PRIO 1 THYSSEN
XT white opal 3mm, WN071
PRIO 2 IGEPA Perspex
XT white opal 3mm, 7984-1X11ST03

Swoosh:
White acrylic panel
+ ORACAL Translucent foil
CAL 8500 orange

Aluminum Body:
Aluminium body powdercoated in
RAL 9004 black matt

Illumination:
LED Trafo build inside letters or behind
wall

COLOURS:

ORANGE	CMYK PMS	00/72/100/10 Orange 021C
DARK ANTHRACITE	CMYK PMS	00/00/10/99 Black C
WHITE	CMYK PMS	00/00/00/00 -
DIGITAL PRINT	Digital Print (CMYK)	

Note: All dimensions are in (mm) or otherwise indicated.



SIGN 2

BG SXT-S2

**EXTERNAL SIXT LOGO -
NON-ILLUMINATED**

Size:

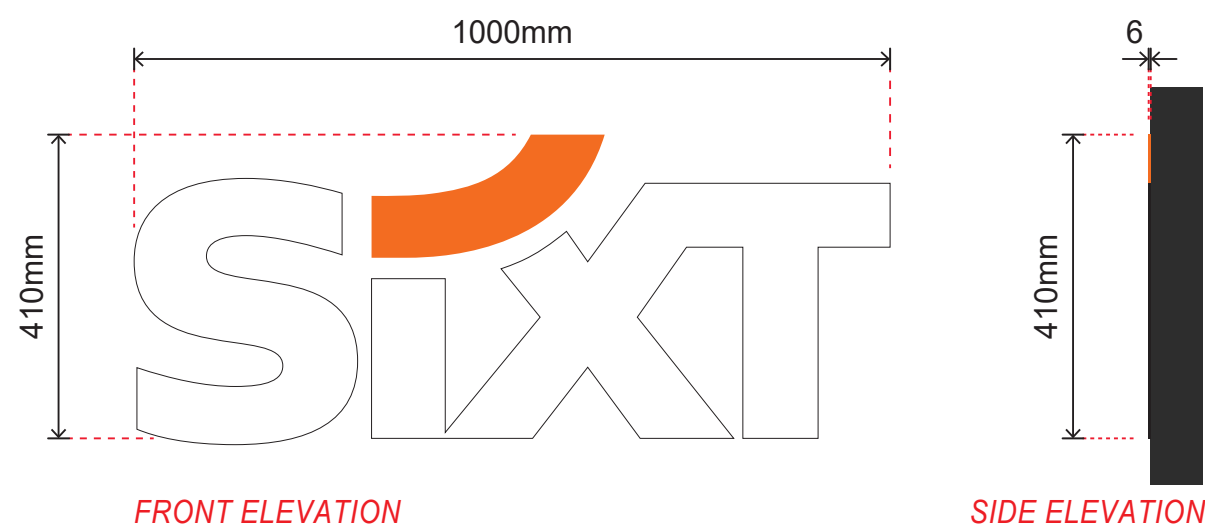
1000mmW x 410mmH x 6mmD

Quantity:

Scale: NTS





Material:

6mm thick aluminum sheet cutouts,
painted to match SIXT's colours.
Mounted directly on existing fascia.

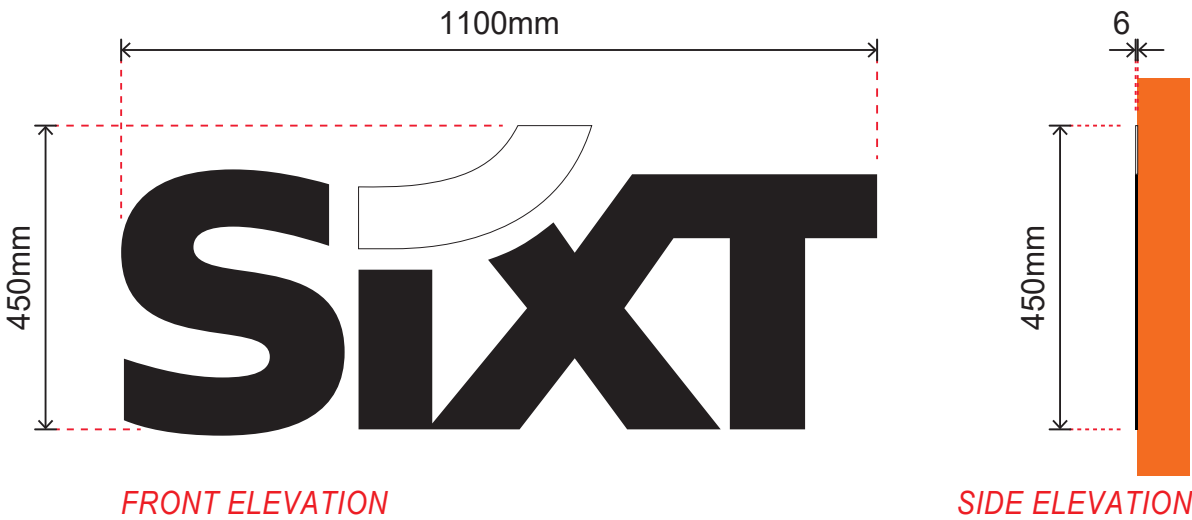


CITY OF MARIBYRNONG
RECEIVED
21/07/2025
URBAN PLANNING

COLOURS:

 ORANGE	CMYK	00/72/100/10
	PMS	Orange 021C
 DARK ANTHRACITE	CMYK	00/00/10/99
	PMS	Black C
 WHITE	CMYK	00/00/00/00
	PMS	-
 DIGITAL PRINT	Digital Print (CMYK)	

Note: All dimensions are in (mm) or otherwise indicated.



SIGN 3

BG SXT-S3

EXTERNAL SIXT LOGO @ CANOPY -
NON-ILLUMINATED

Size:
1100mmW x 450mmH x 6mmD

Quantity:
1

Scale: NTS

Material:
6mm thick aluminum sheet cutouts,
painted to match SIXT's colours.
Mounted directly on existing fascia.

CITY OF MARIBYRNONG
RECEIVED
21/07/2025
URBAN PLANNING

COLOURS:		
ORANGE	CMYK PMS	00/72/100/10 Orange 021C
DARK ANTHRACITE	CMYK PMS	00/00/10/99 Black C
WHITE	CMYK PMS	00/00/00/00 -
DIGITAL PRINT	Digital Print (CMYK)	

Note: All dimensions are in (mm) or otherwise indicated.

CLIENT: Sixt	PROJECT: Footscray Internal & External	FILE NAME: 6570 - FOOTSCRAY INTERNAL & EXTERNAL R03	DATE	JOB NO	DRAWN BY	REVISION	PAGE
FILE PATH: J:\PROJECTS\S\Sixt\03 VIC\Footscray Internal & External - 6570\2.2. PRODUCTION\2. DESIGN MONTAGE			17/07/2026	6570	HP	04	08/15



SIGN 4

BG SXT-S4

DIRECT VEHICLE WAREHOUSE
SIGNAGE - ILLUMINATED

Size:
1715mmW x 643mmH


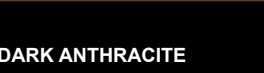


Quantity:
1

CITY OF MARIBYRNONG
RECEIVED
21/07/2025
URBAN PLANNING

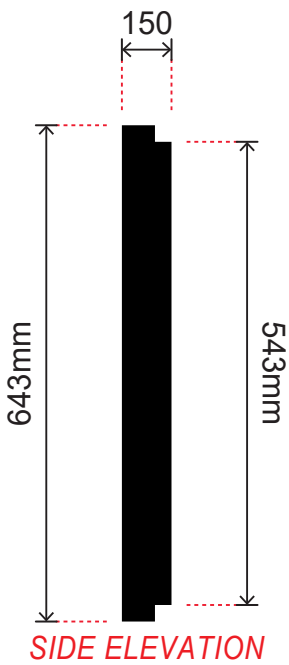
Scale: NTS

Material:
Painted ACM panel with router cut flush fit opal acrylic lettering and logo, with flange.
Translucent SAV to logo face. Internal illumination with white LED. Halo illumination around paramiter of signage.

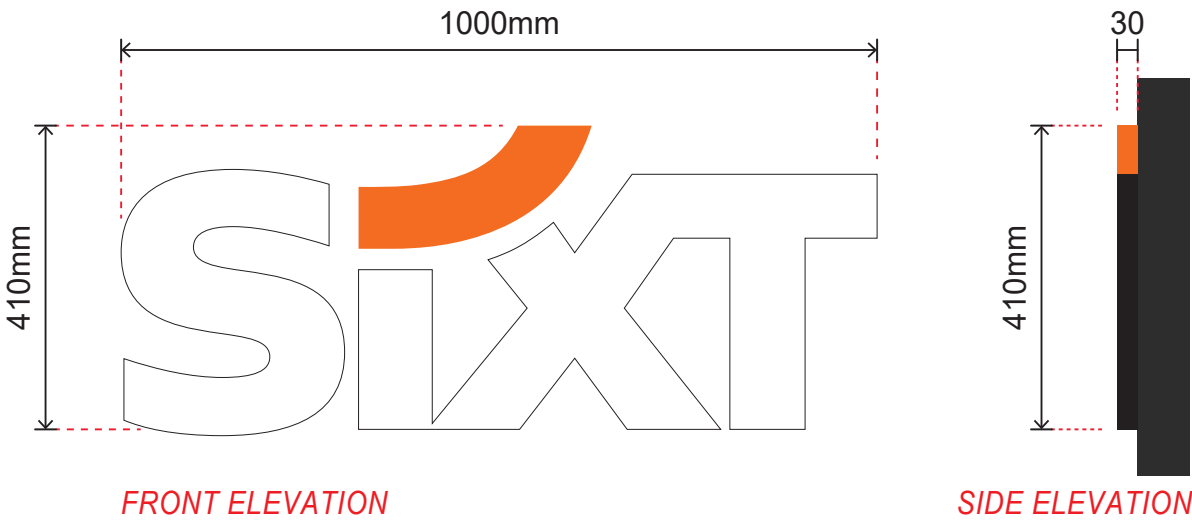
Notes:
Actual dimension of signage to be verify by client.

COLOURS:		
	CMYK	00/72/100/10
	PMS	Orange 021C
	CMYK	00/00/10/99
	PMS	Black C
	CMYK	00/00/00/00
	PMS	-
		Digital Print (CMYK)

Note: All dimensions are in (mm) or otherwise indicated.



CLIENT: Sixt	PROJECT: Footscray Internal & External	FILE NAME: 6570 - FOOTSCRAY INTERNAL & EXTERNAL R03	DATE	JOB NO	DRAWN BY	REVISION	PAGE
FILE PATH: J:\PROJECTS\S\Sixt\03 VIC\Footscray Internal & External - 6570\2.2. PRODUCTION\2. DESIGN MONTAGE			17/07/2026	6570	HP	04	09/15



SIGN 1

BG SXT-ISL

INTERNAL SIXT LOGO -
ILLUMINATED

CITY OF MARIBYRNONG
RECEIVED
21/07/2025
URBAN PLANNING

Size:
1000mmW x 410mmH x 30mmD

Quantity:
2

Scale: NTS





Material:
Logo wordmark:
White acrylic panel
PRIO 1 THYSSEN
XT white opal 3mm, WN071
PRIO 2 IGEPA Perspex
XT white opal 3mm, 7984-1X11ST03

Swoosh:
White acrylic panel
+ ORACAL Translucent foil
CAL 8500 orange

Aluminum Body:
Aluminium body powdercoated in
RAL 9004 black matt

Illumination:
LED Trafo build inside letters or behind
wall

COLOURS:

	CMYK	00/72/100/10
	PMS	Orange 021C
	CMYK	00/00/10/99
	PMS	Black C
	CMYK	00/00/00/00
	PMS	-
		Digital Print (CMYK)

Note: All dimensions are in (mm) or otherwise indicated.

SIGN 2

BG SXT-SBG

INTERNAL WALL GRAPHIC SIGN -
NON-ILLUMINATED

Size:
3000mmW x 2400mmH

Quantity:
1

CITY OF MARIBYRNONG
RECEIVED
21/07/2025
URBAN PLANNING

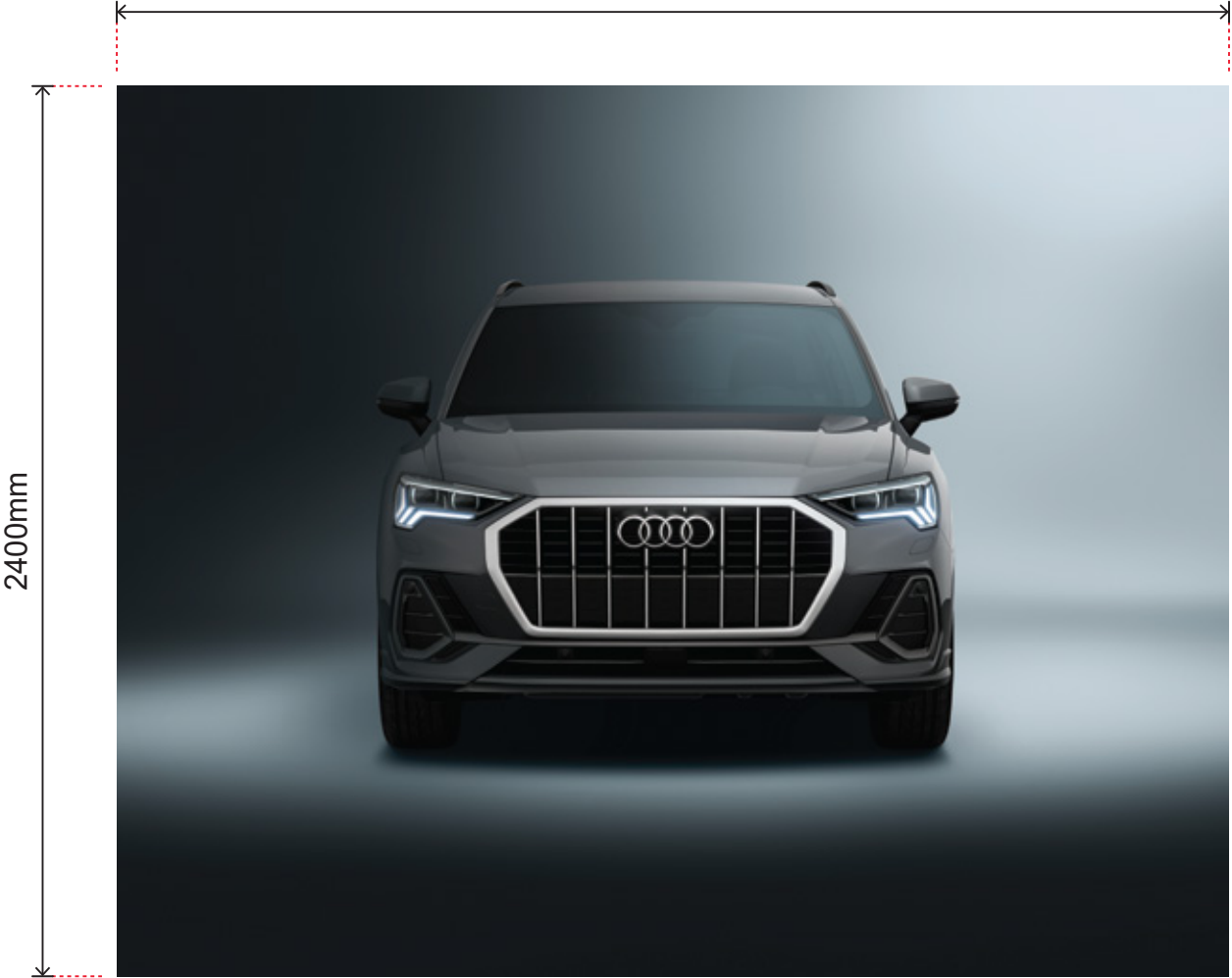
Scale: NTS

Material:
Digitally printed graphics on fabric, fixed to SEG frame.

SEG frames to be matte painted to match RAL 9004




3000mm



FRONT ELEVATION



3D VIEW

COLOURS:		
ORANGE	CMYK PMS	00/72/100/10 Orange 021C
DARK ANTHRACITE	CMYK PMS	00/00/10/99 Black C
WHITE	CMYK PMS	00/00/00/00 -
		Digital Print (CMYK)

Note: All dimensions are in (mm) or otherwise indicated.

CLIENT: Sixt	PROJECT: Footscray Internal & External	FILE NAME: 6570 - FOOTSCRAY INTERNAL & EXTERNAL R03	DATE	JOB NO	DRAWN BY	REVISION	PAGE
FILE PATH: J:\PROJECTS\S\Sixt\03 VIC\Footscray Internal & External - 6570\2.2. PRODUCTION\2. DESIGN MONTAGE			17/07/2026	6570	HP	04	11 /15

SIGN 3

BG SXT-SAV

RIDE HERE RIGHT NOW -
NON-ILLUMINATED

CITY OF MARIBYRNONG
RECEIVED
21/07/2025
URBAN PLANNING

Size:
1425mmW x 570mmH

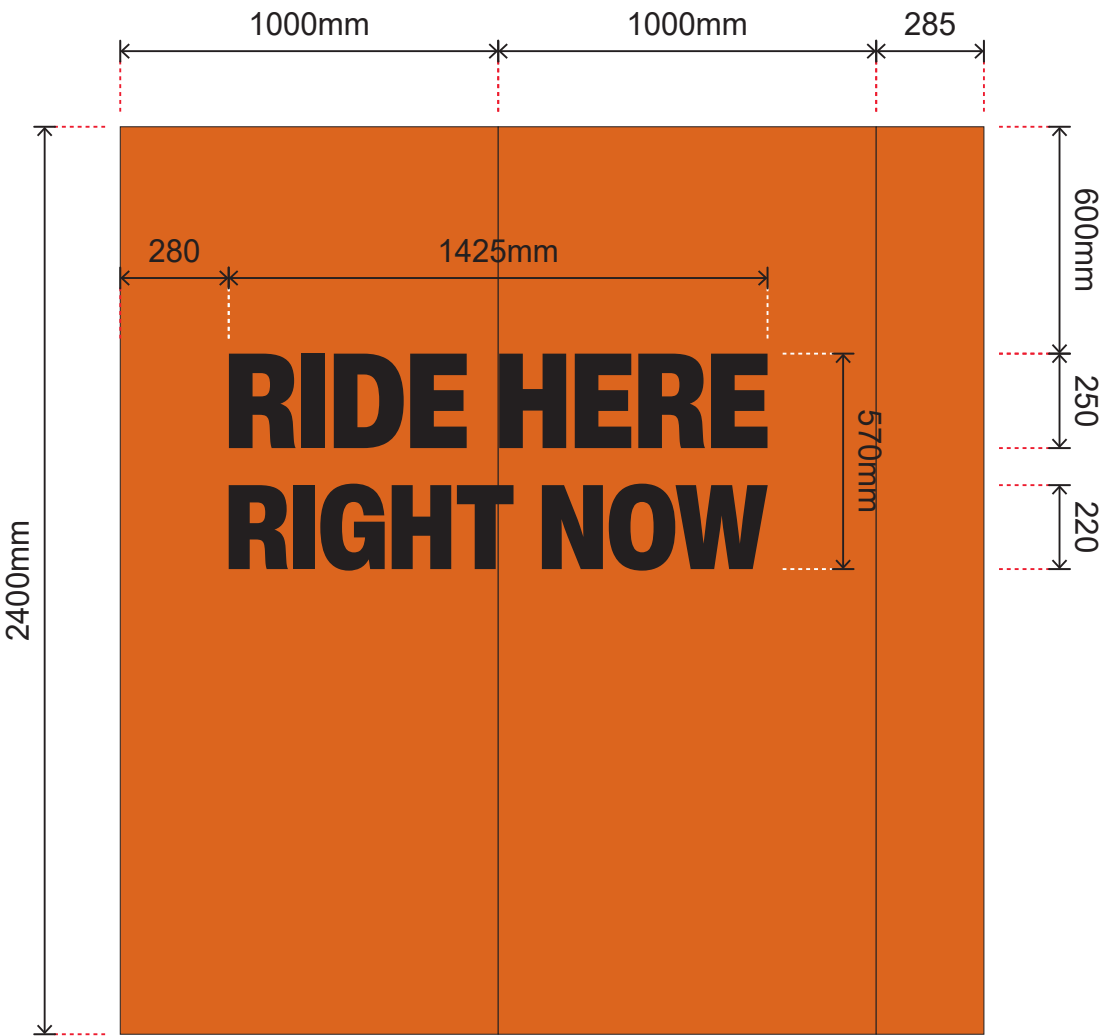
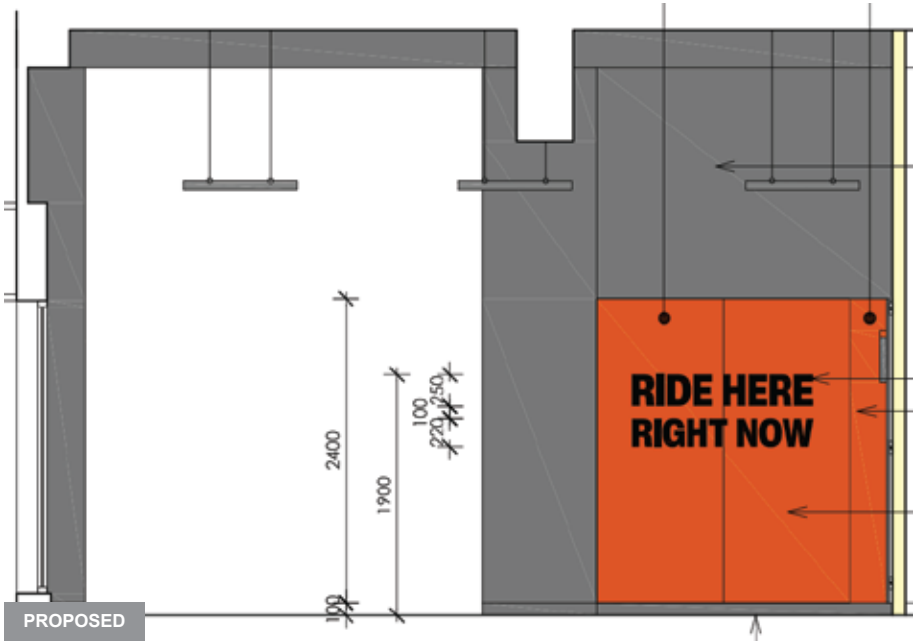
Quantity:
1

Scale: NTS

Material:
2mm thick Black acrylic cut-out applied
to wall panels

COLOURS:		
ORANGE	CMYK PMS	00/72/100/10 Orange 021C
DARK ANTHRACITE	CMYK PMS	00/00/10/99 Black C
WHITE	CMYK PMS	00/00/00/00 -
DIGITAL PRINT	Digital Print (CMYK)	

Note: All dimensions are in (mm) or otherwise indicated.

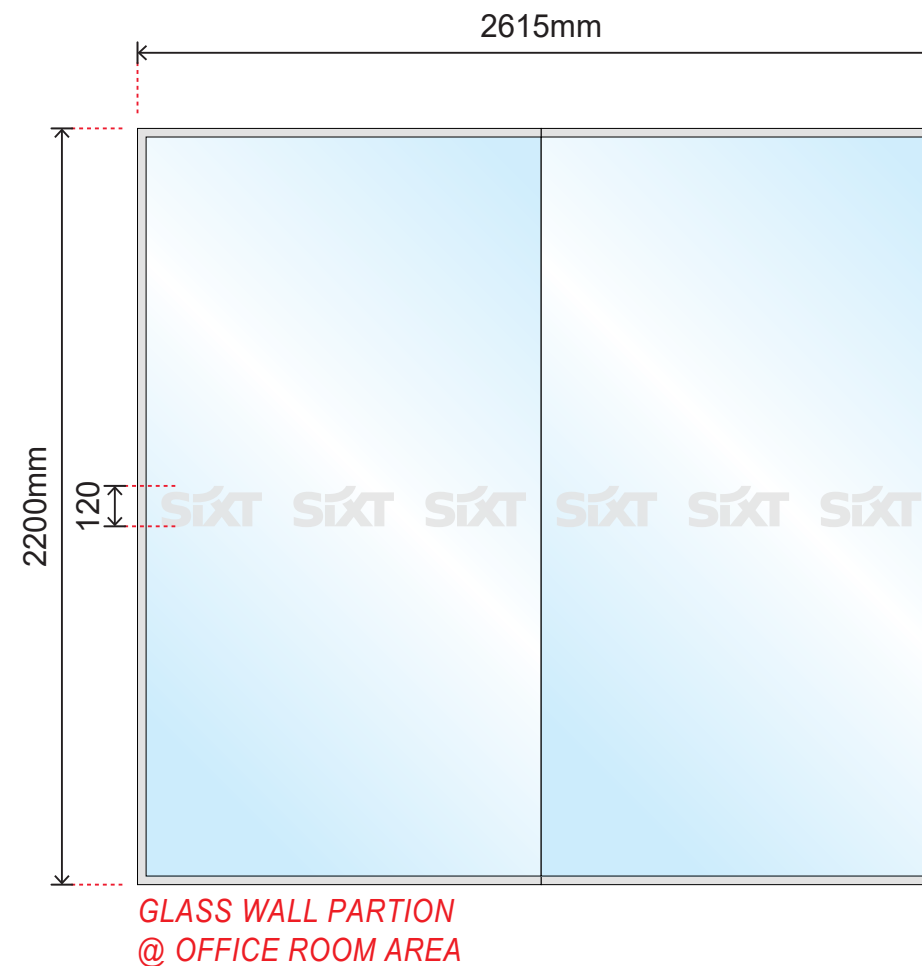
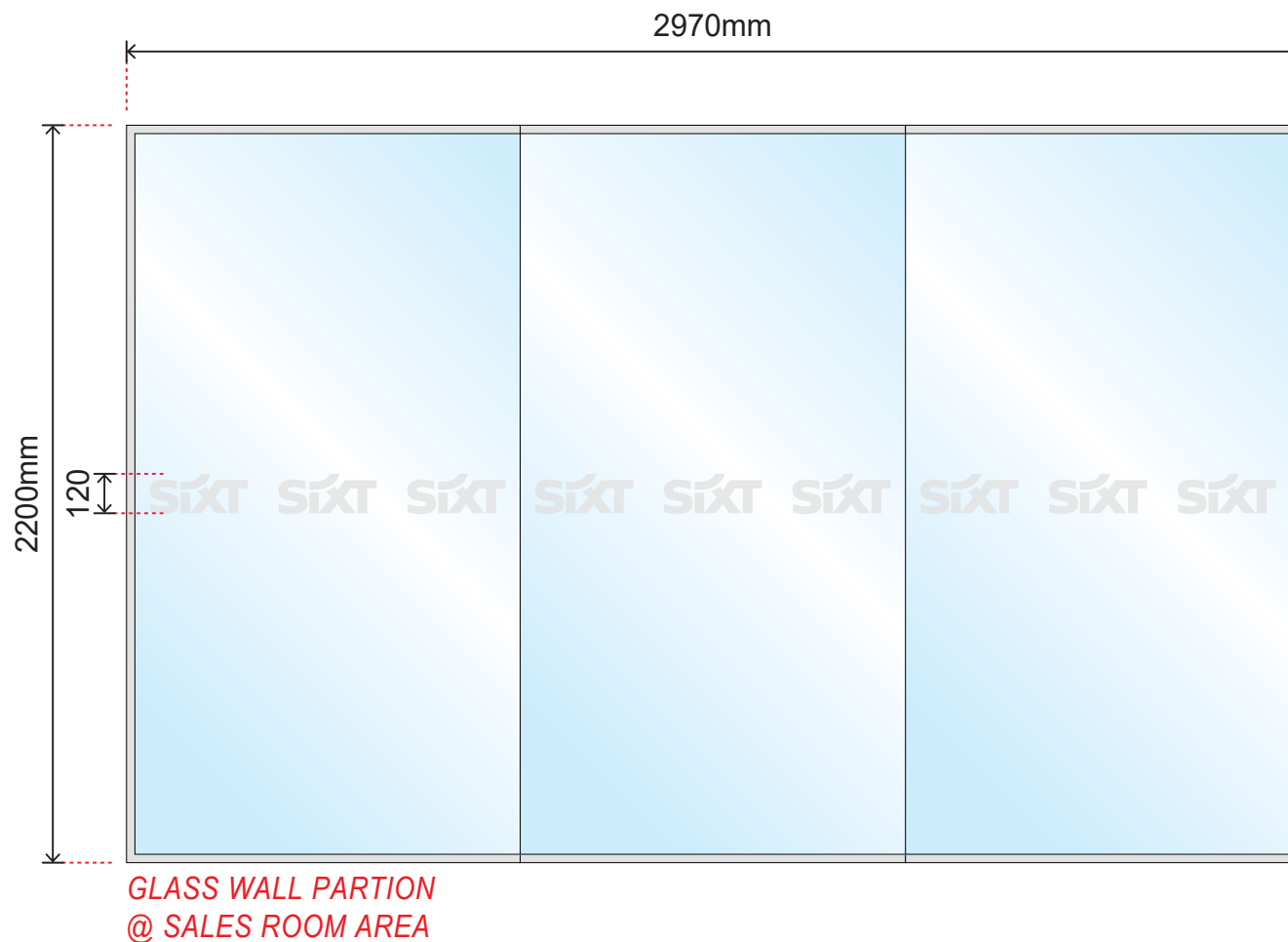
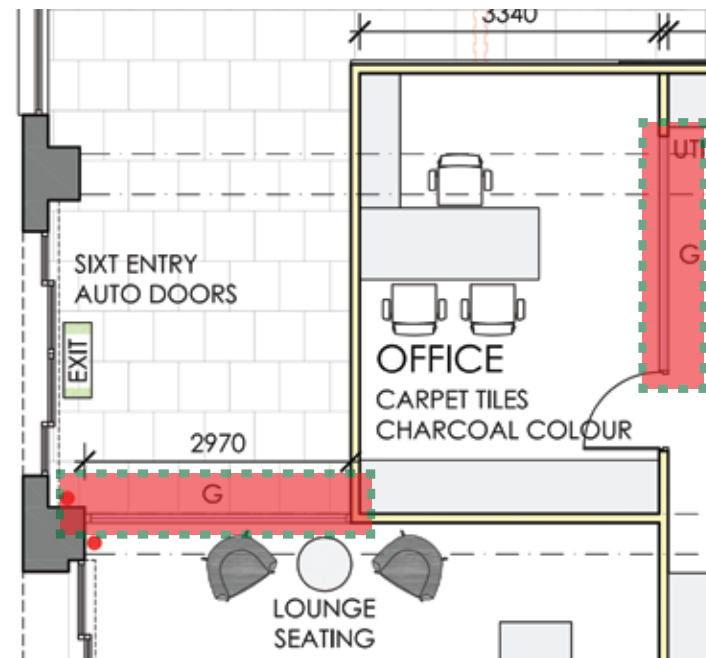


FRONT ELEVATION



3D VIEW

CLIENT: Sixt	PROJECT: Footscray Internal & External	FILE NAME: 6570 - FOOTSCRAY INTERNAL & EXTERNAL R03	DATE	JOB NO	DRAWN BY	REVISION	PAGE
FILE PATH: J:\PROJECTS\S\Sixt\03 VIC\Footscray Internal & External - 6570\2.2. PRODUCTION\2. DESIGN MONTAGE			17/07/2026	6570	HP	04	12/15



SIGN 4

BG SXT-FRT

INTERNAL GLASSWALL FROSTING

CITY OF MARIBYRNONG
RECEIVED
21/07/2025
URBAN PLANNING

Sizes:

2970mmW x 120mmH
2615mmW x 120mmH

Quantity:

1 Each

Scale: NTS

Material:

For Sales Room Area:

Frosted vinyl computer cut SIXT logo banner

For Office Room Area:

Frosted vinyl computer cut SIXT logo banner

Notes:

Width of the glass wall is based on the drawing provided. Actual dimension to be verify by client.

COLOURS:

ORANGE	CMYK PMS	00/72/100/10 Orange 021C
DARK ANTHRACITE	CMYK PMS	00/00/10/99 Black C
WHITE	CMYK PMS	00/00/00/00 -
DIGITAL PRINT	Digital Print (CMYK)	

Note: All dimensions are in (mm) or otherwise indicated.

CLIENT: Sixt	PROJECT: Footscray Internal & External	FILE NAME: 6570 - FOOTSCRAY INTERNAL & EXTERNAL R03	DATE	JOB NO	DRAWN BY	REVISION	PAGE
FILE PATH: J:\PROJECTS\S\Sixt\03 VIC\Footscray Internal & External - 6570\2.2. PRODUCTION\2. DESIGN MONTAGE			17/07/2026	6570	HP	04	13/15

SIGN 5

BG SXT-TRH

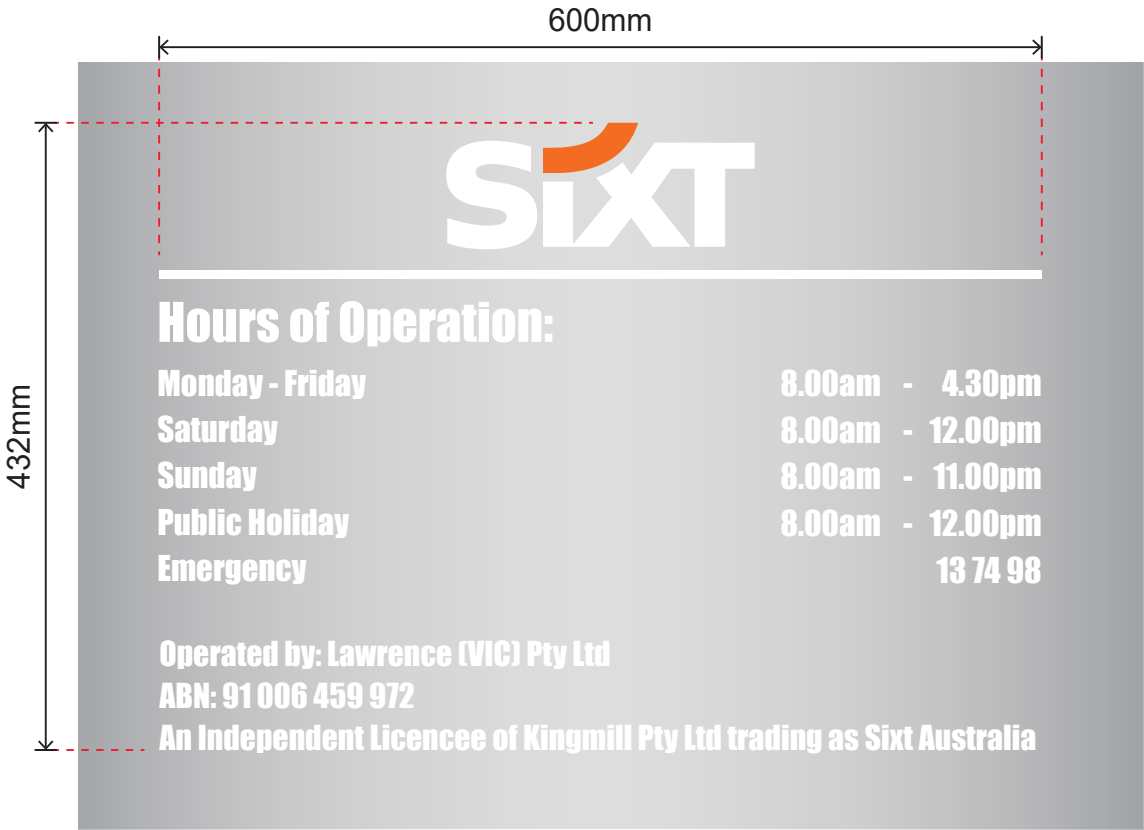
TRADING HOURS SIGN





CITY OF MARIBYRNONG
RECEIVED
21/07/2025
URBAN PLANNING

Size:
600mmW x 432mmH
Quantity:
2

Scale: NTS

Material:
Computer cut white SAV applied to
glass surface



COLOURS:		
	CMYK PMS	00/72/100/10 Orange 021C
	CMYK PMS	00/00/10/99 Black C
	CMYK PMS	00/00/00/00 -
	Digital Print (CMYK)	

Note: All dimensions are in (mm) or otherwise indicated.

CLIENT: Sixt	PROJECT: Footscray Internal & External	FILE NAME: 6570 - FOOTSCRAY INTERNAL & EXTERNAL R03	DATE	JOB NO	DRAWN BY	REVISION	PAGE
FILE PATH: J:\PROJECTS\S\Sixt\03 VIC\Footscray Internal & External - 6570\2.2. PRODUCTION\2. DESIGN MONTAGE			17/07/2026	6570	HP	04	14 /15

Revision Details

00	19/06/2025 - HP - Initial release for client review	CITY OF MARIBYRNONG RECEIVED 21/07/2025 URBAN PLANNING
01	25/06/2025 - HP - Changes in dimension and sign position	
02	30/06/2025 - HP - Additional items requested by client	
03	03/07/2025 - HP - Sign adjustments / removal requested by client	
04	16/07/2025 - HP - Additional items requested by client	
05	xx/xx/xxxx - XX - Revision Comments	

CLIENT: Sixt	PROJECT: <small>Footscray Internal & External</small>	FILE NAME: 6570 - FOOTSCRAY INTERNAL & EXTERNAL R03	DATE	JOB NO	DRAWN BY	REVISION	PAGE
FILE PATH: J:\PROJECTS\S\Sixt\03 VIC\Footscray Internal & External - 6570\2.2. PRODUCTION\2. DESIGN MONTAGE			17/07/2026	6570	HP	04	15/15