



# Hansen Reserve Masterplan

March 2018

# Context Plan



View looking south



View looking northeast



Playground, entry from Robert Street carpark



Paths and seating, southeast corner

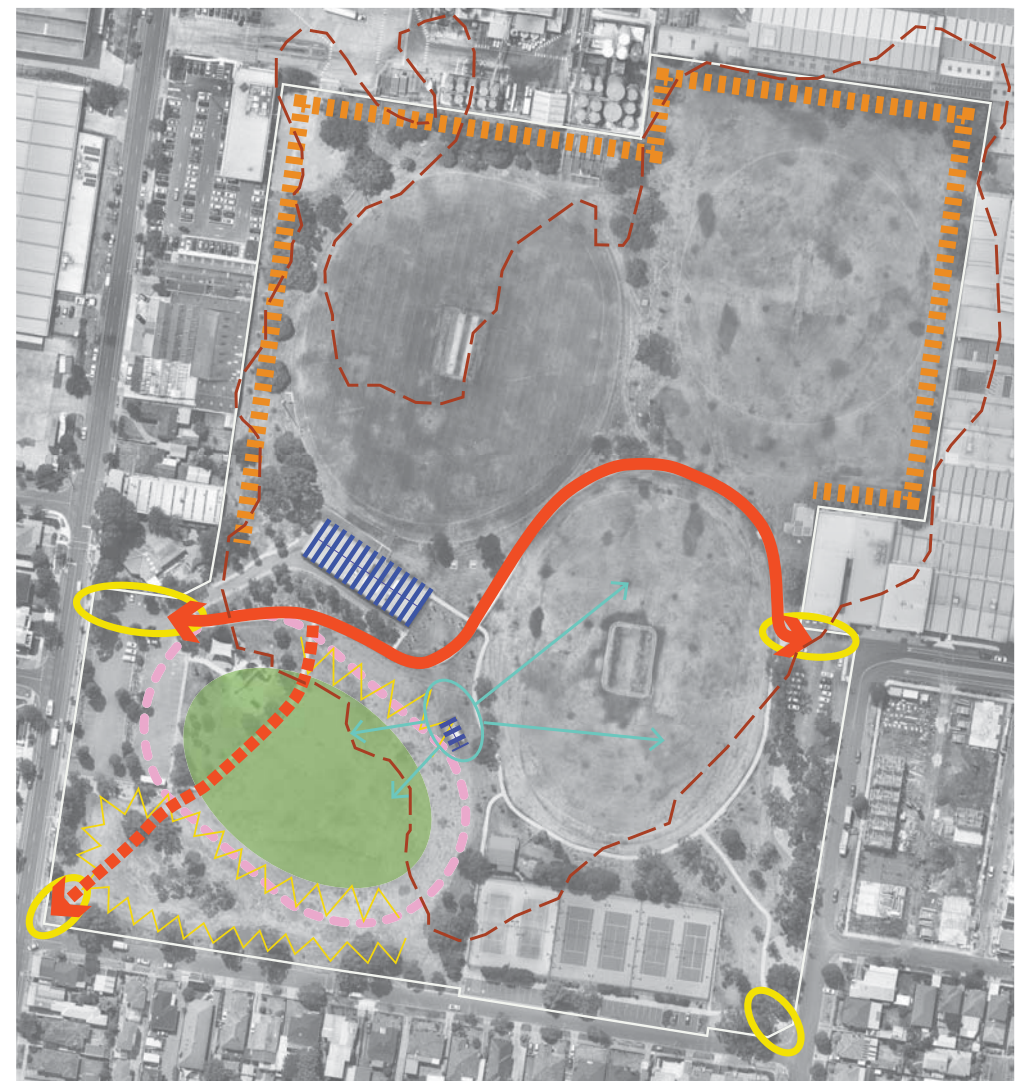


Glamis Road edge and carpark



Corner of Wattle and Roberts Street

## Site analysis



- Legend**
- Main axis to improve
  - Potential expansion to main axis
  - Entry points - to improve
  - Retain mounded areas
  - Buildings create visual barrier
  - Views from elevated central point - opportunity for focal point - relocate air monitoring station
  - Flat central lawn - opportunity for informal recreation activities
  - Back fences - activate isolated northern edges of reserve to improve surveillance
  - Alignment of demolished velodrome
  - Alignment of quarry extents

## Site photos: existing conditions



# Vision

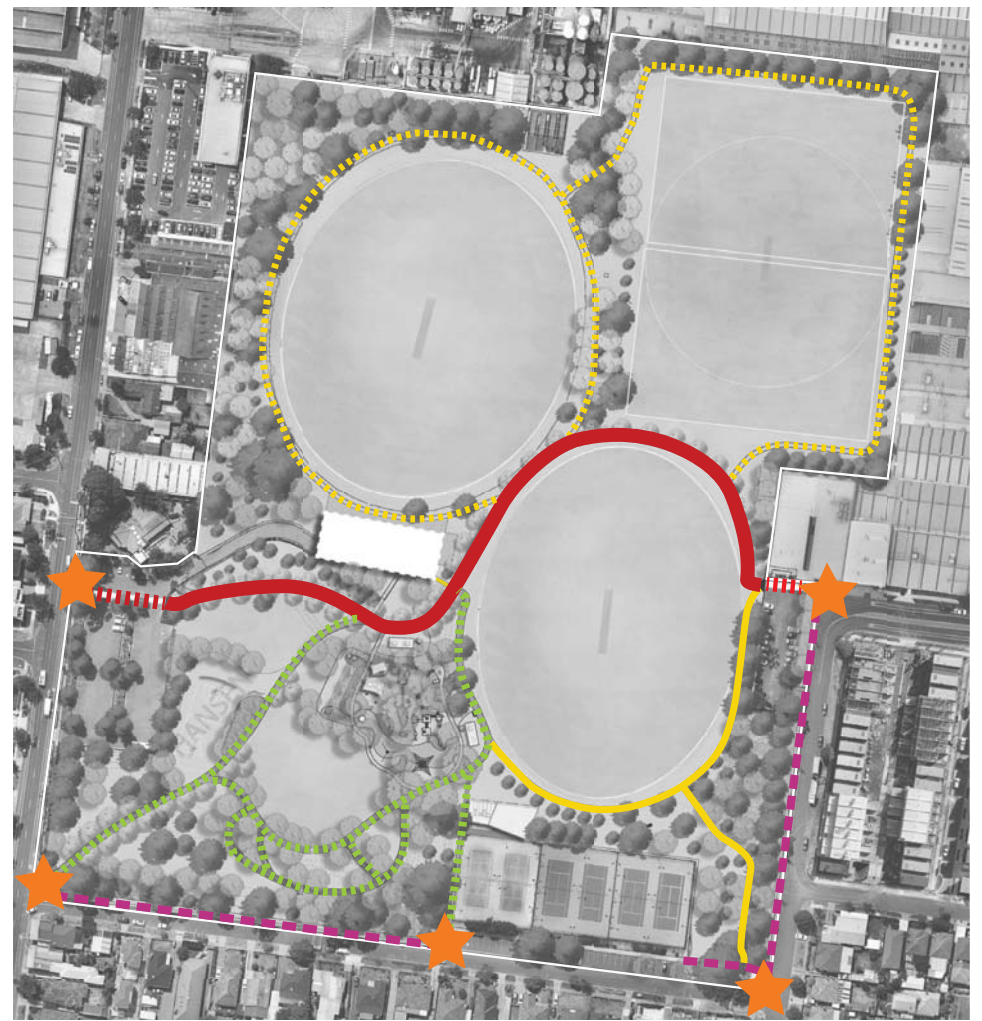
Hansen Reserve will be a key open space destination for the residents of West Footscray south of the rail line. The reserve will provide a high quality landscape in a wide open space setting, a variety of active and informal recreation, and park facilities in keeping with municipal reserve standards. It is envisaged to become a community hub of activity for all users.

# Key Principles

The key principles which have evolved from the community consultation and which now drive the Draft Masterplan are:

- Enhance pedestrian access through and around the reserve
- Improve the landscape character of the reserve and its presentation at street edges and entries
- Maintain the sporting focus and facilitate a greater range of informal recreation and community activity opportunities
- Increase tree canopy and enhance the environmental sustainability of the reserve
- Improvements to organised sports infrastructure at the reserve

# Arrival and circulation



### Legend

- Existing 3 metre wide shared path - main axis to have lighting installed
- Extension of main path to street edges (through carparks)
- Existing gravel path to be upgraded to concrete
- New gravel path circuit
- New 2.5 metre wide concrete path for bike skills and pedestrian connection
- New footpaths to street edges
- Improved entry treatment to reserve

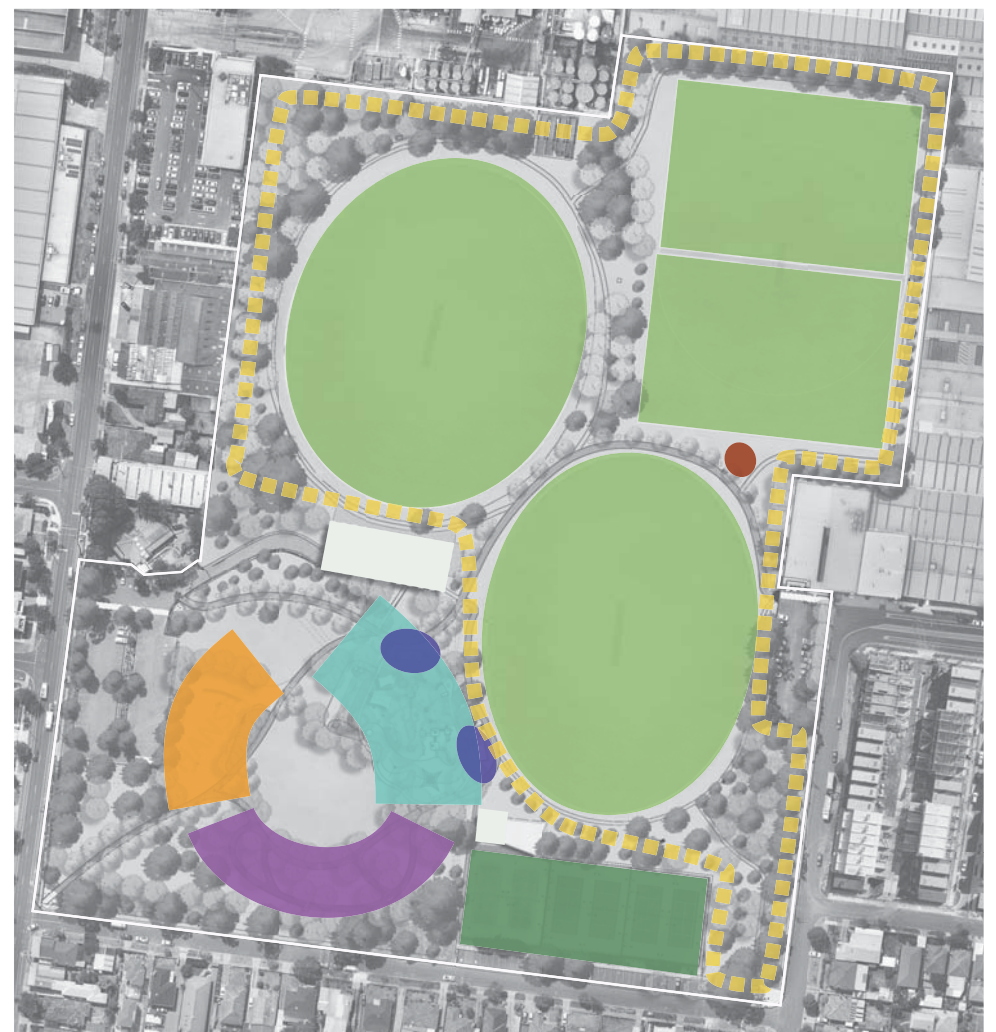
# Tree Framework



### Legend

- Existing trees
- Proposed new tree planting locations

# Recreation Activities



### Legend

- Playing fields
- Playground areas
- Bike/Scooter skills area
- Court Space/Open hardstand - free to public
- Picnic areas
- Fitness station
- Tennis courts
- Dogs off-lead area





**KEY**

- |   |   |   |
|---|---|---|
| 1 New Kingsville tennis pavilion with potential cafe / food and beverage outlet | 9 Upgrade boundary fence to chain mesh  | 17 Basketball/netball practice space        |
| 2 Upgrade courts 5 and 6  | 10 New scoreboard   | 18 Skate elements and plaza space           |
| 3 Mark courts for multi-use sports including netball                            | 11 Formalise eastern carpark  | 19 Fitness station x 3 along path           |
| 4 Redevelop pavilion for universal access co-locate public toilet               | 12 Provide lighting to carparks   | 20 Picnic areas with shelters and BBQ       |
| 5 New floodlights to Barlow Oval  | 13 Improve path entries with raised thresholds  | 21 New circuit paths around northern fields |
| 6 Upgrade floodlights to Walker Oval and Soccer fields                          | 14 Lighting along main east-west path   | 22 New footpaths along street edges         |
| 7 Upgrade playing surfaces, grading and irrigation                              | 15 Relocate and upgrade playground (and relocate EPA air monitoring station off site) | 23 New access path to sw corner of reserve  |
| 8 Upgrade cricket nets  | 16 Cycle skills track   | 24 Entry feature gardens                    |

**LEGEND**

- |  |                             |
|--|-----------------------------|
| Existing Trees to be retained                                    | Public toilet               |
| Proposed Trees - avenue along main path large, deciduous species | Sports flood light          |
| Proposed Trees - informal planting, various native species       | Path / carpark light        |
| Garden bed planting  | Exercise / fitness stations |
| Concrete paths / pavement  | Park seats                  |
| Granitic gravel paths  | Drinking fountain           |





- KEY**
- 1 Flying fox
  - 2 Sandplay area with shade sail
  - 3 Natureplay zone
  - 4 Junior play equipment with shade sail
  - 5 Mound with embankment slides, ropes and clambering rocks
  - 6 Senior play unit with big slide
  - 7 Carousel
  - 8 Swings
  - 9 Giant swing
  - 10 Bouncing play unit
  - 11 Picnic areas with shelters and BBQ
  - 12 Bicycle/Scooter skills circuit
  - 13 Basketball court
  - 14 Netball practice area
  - 15 Skate elements around court area



Note: images convey only indicative character of play elements, not actual equipment



# Indicative tree palette



Corymbia citriodora  
Avenue tree planting



Quercus palustris



Corymbia maculata  
Informal tree planting



Ulmus parvifolia



Eucalyptus sideroxylon



Ulmus procera



Acacia Species

# Playground - artist impressions



View across playground from southeast



View across flying fox to playground

Organised Sporting Facilities	
Item	Timeframe
S1	Redevelop pavilion to support universal access, community use and public toilet.
S2	Upgrade flood lighting to Walker Oval.
S3	Upgrade flood lighting to soccer pitches.
S4	New flood lighting to Barlow Oval.
S5	Upgrade playing surfaces (drainage and irrigation) to meet current standards.
S6	Upgrade Courts 5 & 6 and investigate potential for multi-use / netball.
S7	Upgrade of cricket nets
S8	New score board.
S9	Walker Oval boundary fence to be upgraded to chainmesh sport fencing.

Access and Circulation	
Item	Timeframe
A1	Upgrade pathway around Barlow Oval to concrete surface.
A2	New concrete pathway from south-west entry.
A3	New gravel pathway around Walker Oval.
A4	New gravel pathway around soccer fields.
A5	Lighting along east-west shared path.
A6	Provide lighting to carparks.
A7	Improve shared pathway entrances at east and west carparks (through raised thresholds).
A8	Formalise eastern carpark and create new entry point in a safer location.

Informal Recreation	
Item	Timeframe
R1	New regional playspace
R2	Basketball court and mixed use skate space.
R3	Junior cycle skills track.
R4	Exercise equipment - three stations along Barlow Oval Path.

Landscape Improvements	
Item	Timeframe
L1	Improve landscape gateway treatments to the south-west and south-east entries.
L2	Major avenue tree planting along east-west path.
L3	New tree planting across the reserve.
L4	Irrigation to lawn areas adjacent to the playground and multipurpose court for all year use.

Park Amenities	
Item	Timeframe
P1	Sheltered barbeque and picnic area (near sports pavilion and playspace).
P2	Sheltered barbeque and picnic area (near tennis club).
P3	Seating around sports field.
P4	Drinking fountains
P5	Relocate EPA air monitoring station to Bassett Reserve or agreed location.

