

Call the Translation and Interpreting Service on 131 450 and ask them to call Council on 9688 0200 for help with this document.

ARABIC

اتصل بخدمة الترجمة التحريرية والشفهية على الرقم 131 450 واطلب منهم الاتصال بالمجلس البلدي على الرقم 9688 0200 للحصول على المساعدة بشأن هذه الوثيقة.

CHINESE

请致电 131 450 联系笔译和口译服务处，并请他们致电 9688 0200 联系市政府寻求有关本文件的帮助。

HINDI

अनुवाद एवं दुभाषिया सेवा को 131 450 पर कॉल करें और इस दस्तावेज़ के साथ सहायता के लिए उन्हें 9688 0200 पर काउंसिल को कॉल करने के लिए कहें।

SPANISH

Llame al Servicio de Traducción e Interpretación al 131 450 y pídeles que llamen a la Municipalidad al 9688 0200 para obtener ayuda con este documento.

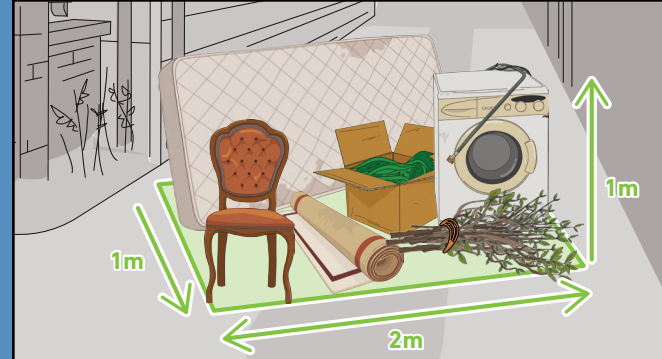
TELUGU

అనువాదం మరియు వివరణ సేవకు 131 450 కి కాల్ చేయండి మరియు ఈ పత్రంలో సహాయం కోసం కౌన్సిల్‌ని 9688 0200 కి కాల్ చేయమని వారిని అడగండి

VIETNAMESE

Hãy gọi cho Dịch vụ Biên phiên dịch theo số 131 450 và yêu cầu họ gọi cho Hội đồng thành phố theo số 9688 0200 để được trợ giúp về tài liệu này.

A standard booking is 2 cubic metres (2m x 1m x 1m). An additional 4 cubic metres of green waste can be presented.



Items should be placed close to the front property boundary.



Important rules for your collection

Collection times are between 6am and 6pm

Your hard rubbish collection will occur on:

We will notify you of your collection date via email and/or phone call. An SMS reminder will be sent prior to collection. Please place items in your front yard or driveway the night before your scheduled collection.

Place items as close to the front property boundary as possible, not on your veranda.

Do not place your hard rubbish on the nature strip without approval from Council.

It is your responsibility to ensure that waste items are clearly separated from other items not intended for removal. Council and its service providers will not be held liable if you do not separate items and they are accidentally collected.

If you need to cancel your collection, please notify us by 2pm on the Friday prior to your collection.

If the amount of hard rubbish is greater than the allowable amount, Council will not collect the excess. Additional collections can be arranged with Council for a fee.

Hard Rubbish Collections



If you require further assistance, please contact Customer Service on 9688 0200 or email@maribyrnong.vic.gov.au

For more information on how you can Bin it Better, visit: maribyrnong.vic.gov.au/bin-it-better



✓ Yes Có

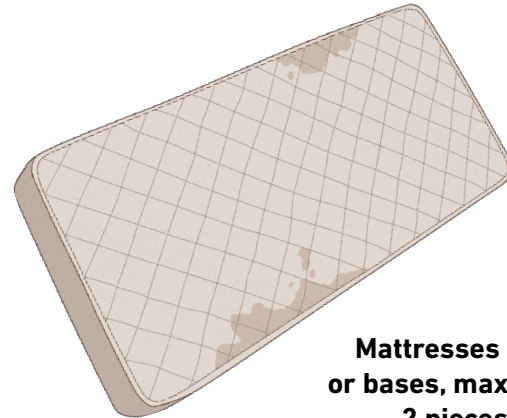
Up to 2 cubic metres



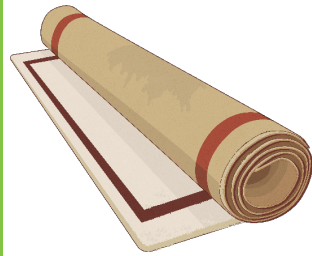
White goods



Household Furniture



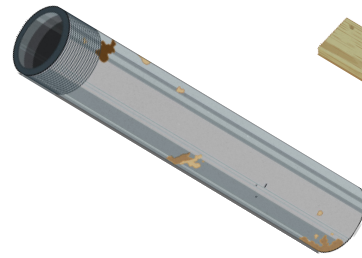
Mattresses and
or bases, maximum
2 pieces



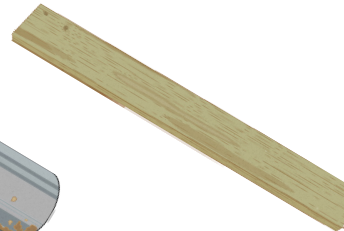
Carpets and
underlay



Electrical
Appliances



Scrap metal
up to 1.5 metres



Nail-free timber
up to 1.5 metres,
maximum 20 pieces

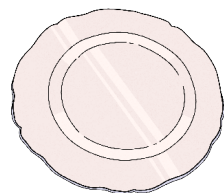
Up to 4 cubic metres



Branches up to
1.5m bundled to
30cm in diameter



Clippings or
green waste in a
cardboard box



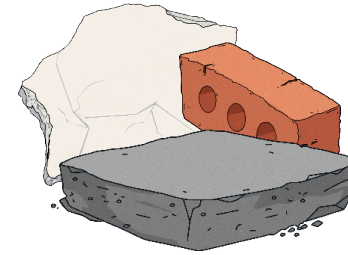
Crockery



Garden equipment

⊘ No Không

Items on the nature strip will not be collected
unless an exemption has been issued



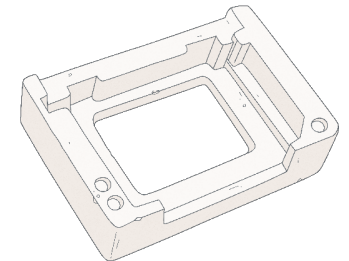
Bricks, plaster,
concrete & other
renovation materials



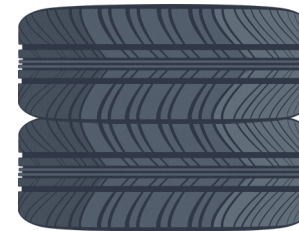
Fluorescent tubes



Paint, hazardous
chemicals, sprays



Polystyrene



Tyres



Gas bottles



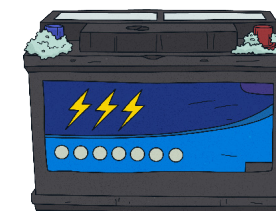
General rubbish



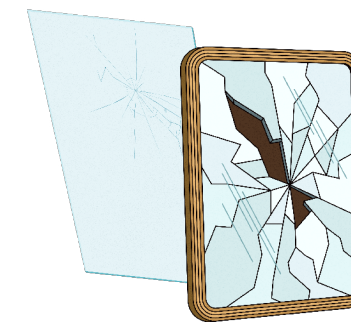
Plumbing fixtures



Tree stumps



Batteries



Glass

To properly
dispose of these
items please
visit our website
for guidance:
[Maribyrnong.vic.
gov.au/transfer-
stations](http://Maribyrnong.vic.gov.au/transfer-stations)